

STATE OF ILLINOIS  
DEPARTMENT OF TRANSPORTATION  
DIVISION OF HIGHWAYS

**PLANS FOR PROPOSED  
ENHANCEMENTS**

PLAN 1 INCH = 20 FEET  
PROFILE HORIZ. 1 INCH = 20 FEET  
SCALES PROFILE VERT. 1 INCH = 5 FEET  
CROSS SECTIONS HORIZ. 1 INCH = 10 FEET  
CROSS SECTIONS VERT. 1 INCH = 5 FEET

**CITY OF CHAMPAIGN  
CHAMPAIGN COUNTY, ILLINOIS  
SECTION NO. 00-00374-03-LS  
PROJECT NO. TE-00D5(85)  
JOB NO. C-95-327-07  
CITY PROJECT NO. 22-0000-07900-0377**

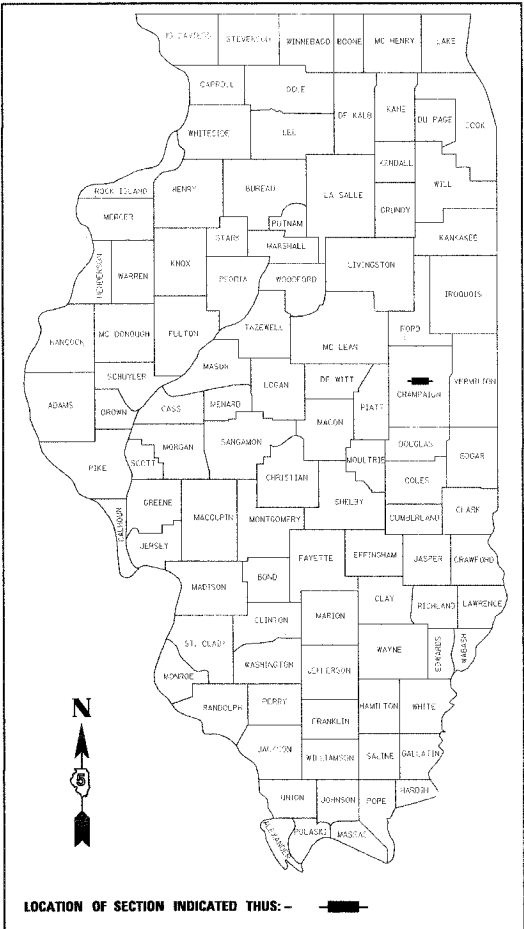
**CURTIS ROAD BRIDGE ENHANCEMENT**

R 8 E

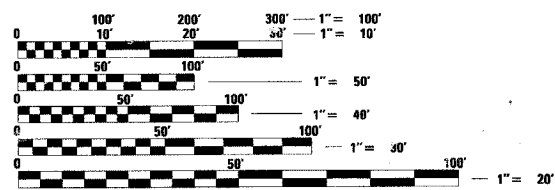
F.A.P. RTE.	SECTION	COUNTY	TOTAL SHEETS	SHEET NO.
1-57 00	374-03-LS	CHAMPAIGN	21	1
ILLINOIS		F.A. PROJ. NO.	22	
CONTRACT NO. 91382				

**INDEX OF SHEETS**

SHEET NO.	DESCRIPTION
1	COVER SHEET
2	HIGHWAY STANDARDS, AND GENERAL NOTES
3	SUMMARY OF QUANTITIES
4	GENERAL PLAN AND ELEVATION
5	STRUCTURE DETAILS
6	RAILING DETAILS
7	MASONRY DETAILS
8	PLANTING PLAN
9	PLANTING DETAILS
10	MATERIALS PLAN
11	LARGE COLUMN DETAILS
12	SMALL COLUMN DETAILS
13 TO 15	COLUMN DETAILS
16	LIGHTING PLAN
17 TO 18	LIGHTING DETAILS
19	LIGHTING SCHEDULE
20 TO 21	SOIL BORINGS
22	CONTROL INSTALLATION (BASE MOUNT CABINET) $\Delta$



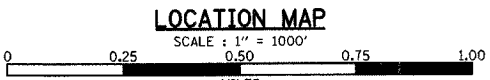
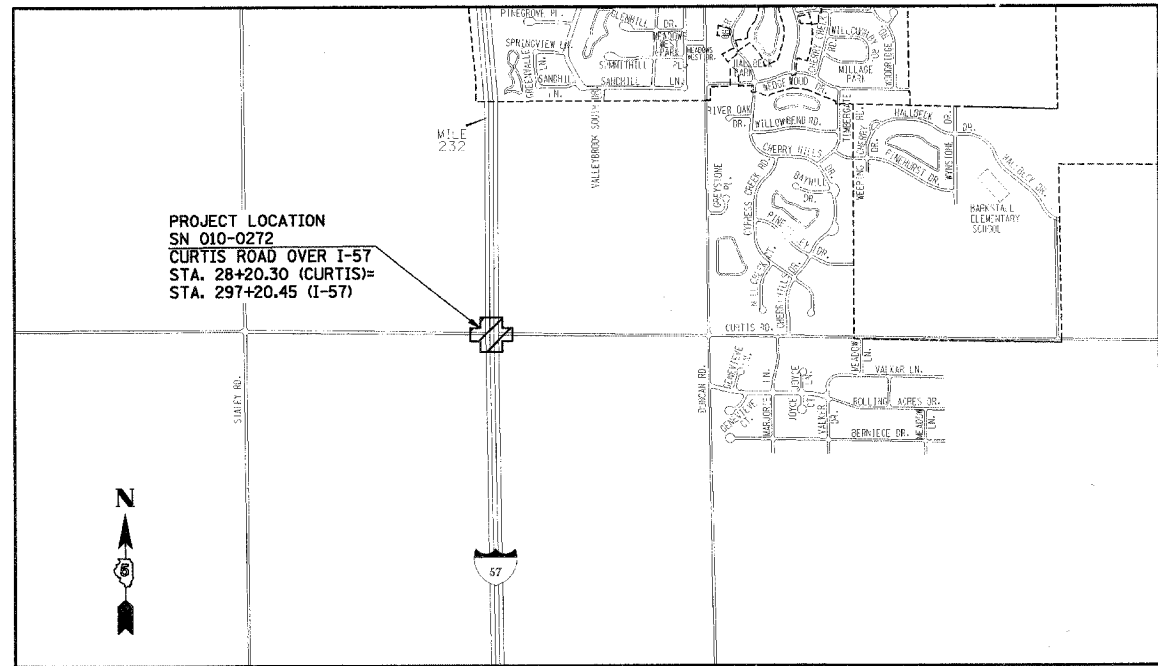
ILLINOIS HIGHWAY STANDARD DRAWINGS  
(SEE SHEET NO. 2)



FULL SIZE PLANS HAVE BEEN PREPARED USING STANDARD ENGINEERING SCALES. REDUCED SIZED PLANS WILL NOT CONFORM TO STANDARD SCALES. IN MAKING MEASUREMENTS ON REDUCED PLANS, THE ABOVE SCALES MAY BE USED.

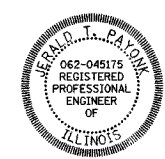
J.U.L.I.E.  
JOINT UTILITY LOCATION INFORMATION FOR EXCAVATION  
1-800-892-0123

CONTRACT NO. 91382



T 19 N  
Revised 3/28/88

DESIGN DESIGNATION  
INTERSTATE ROUTE 57  
PRINCIPAL ARTERIAL ADT 27,600  
CURTIS ROAD  
MINOR ARTERIAL ADT 19,600



PROFESSIONAL ENGINEER  
CLARK DIETZ, INC.  
DATE: 10 JAN 08  
LICENSE EXPIRES 11-30-09

**Hitchcock Design Group**  
Creating Better Places<sup>®</sup>

**Clark Dietz ENGINEERS**  
DESIGN FIRM REGISTRATION No. 184-000450  
1817 SOUTH NEIL STREET  
SUITE 100  
CHAMPAIGN, IL 61820  
PHONE: 217.373.8900  
FAX: 217.373.8923

APPROVED *W. Roland W. [Signature]* Jan 11, 20 08  
CHAMPAIGN CITY ENGINEER

PASSED *David A. Spindler [Signature]* 1/21 20 08  
DISTRICT FIVE ENGINEER OF LOCAL ROADS & STREETS

Releasing For Bid Based on Limited Review  
*John E. [Signature]* Jan 22 20 08  
DEPUTY DIRECTOR OF HIGHWAYS, REGION THREE ENGINEER

STATE OF ILLINOIS  
DEPARTMENT OF TRANSPORTATION

# HIGHWAY STANDARDS

SHEET NO.	NAME OF STANDARD
000001-05	STANDARD SYMBOLS, ABBREVIATIONS AND PATTERNS
001001-01	AREAS OF REINFORCEMENT BARS
001006	DECIMAL OF AN INCH AND OF A FOOT
280001-04	TEMPORARY EROSION CONTROL SYSTEMS
701101-01	OFF-ROAD OPERATIONS, MULTILANE, 15' TO 24" FROM PAVEMENT EDGE
701106-01	OFF-ROAD OPERATIONS, MULTILANE, MORE THAN 15' AWAY
701400-02	APPROACH TO LANE CLOSURE, FREEWAY/EXPRESSWAY
701401-04	LANE CLOSURE, FREEWAY/EXPRESSWAY
701406-04	LANE CLOSURE, FREEWAY/EXPRESSWAY, DAY OPERATIONS ONLY
701411-04	LANE CLOSURE, MULTILANE, AT ENTRANCE OR EXIT RAMP, FOR SPEEDS $\geq$ 45 MPH
701601-05	URBAN LANE CLOSURE, MULTILANE, 1W OR 2W WITH NONTRAVERSABLE MEDIAN
701901	TRAFFIC CONTROL DEVICES
<del>805001</del>	<del>ELECTRICAL SERVICE INSTALLATION DETAILS</del> $\triangle$
<del>814001-01</del>	<del>HANDHOLES</del> $\triangle$

# GENERAL NOTES

F.A. RTE.	SECTION	COUNTY	TOTAL SHEETS	SHEET NO.
I-57	00-00374-03-LS	CHAMPAIGN	21	2
STA.		TO STA.		
FED. ROAD DIST. NO.		ILLINOIS FED. AID PROJECT		

CONTRACT NO. 91382


- ALL ELEVATIONS SHOWN ARE REFERRED TO THE N.A.V.D. 88 DATUM.
- WHEREVER IN THE PLANS OR SPECIFICATIONS THE TERM "STANDARD SPECIFICATIONS" IS USED IT SHALL BE UNDERSTOOD BY THE CONTRACTOR TO MEAN THE "STANDARD SPECIFICATIONS FOR ROAD AND BRIDGE CONSTRUCTION" AS PREPARED BY THE DEPARTMENT OF TRANSPORTATION OF THE STATE OF ILLINOIS AND ADOPTED ON JANUARY 1, 2007.
- ANY REFERENCE TO STANDARDS THROUGHOUT THE PLANS SHALL BE INTERPRETED TO BE THE LATEST STANDARDS OF THE DEPARTMENT AS SHOWN ON THE HIGHWAY STANDARDS AND LEGEND SHEET.
- IT IS THE CONTRACTOR'S RESPONSIBILITY TO ASCERTAIN EXISTING FIELD CONDITIONS BEFORE BIDDING ON THE PROJECT.
- THE CONTRACTOR WILL BE REQUIRED TO COMPLY WITH STATE REGULATIONS REGARDING AIR, WATER, AND NOISE POLLUTION.
- THE CONTRACTOR SHALL TAKE CARE NOT TO STORE OR DISPOSE OF DEBRIS OR UNSUITABLE MATERIALS WITHIN LIMITS OF THE IMPROVEMENT AND TAKE CARE TO LIMIT CONSTRUCTION TO WITHIN THE RIGHT-OF-WAY AND EASEMENT AREAS. UNNECESSARY ENCROACHMENTS ONTO PRIVATE OR PUBLIC AREAS WILL NOT BE ALLOWED.
- WHERE SECTION OR SUBSECTION MONUMENTS, BENCHMARKS, OR IRON PIPE MONUMENTS ARE ENCOUNTERED, THE ENGINEER SHALL BE NOTIFIED BEFORE SUCH MONUMENTS ARE REMOVED. THE CONTRACTOR SHALL PROTECT AND CAREFULLY PRESERVE ALL MONUMENTS UNTIL AN ILLINOIS REGISTERED LAND SURVEYOR OR AGENT HAS WITNESSED OR OTHERWISE REFERENCED THEIR LOCATION. THE CONTRACTOR WILL BE RESPONSIBLE FOR HAVING AN ILLINOIS REGISTERED LAND SURVEYOR RE-ESTABLISH ANY MONUMENTS UNNECESSARILY DESTROYED BY HIS OPERATIONS.
- THE FINISHED EARTHWORK SHALL HAVE VEGETATIVE SUSTAINING SOIL COVERING THE TOP 4 INCHES IN AREAS TO BE SEEDED. THE TOPSOIL REQUIRED WILL BE PAID FOR PER SQUARE YARD FOR TOPSOIL FURNISH AND PLACE, 4".
- ALL DISTURBED AREAS SHALL BE SEEDED AS SHOWN ON THE PLANS. SEEDING AND MULCHING SHALL BE DONE AS SOON AS EACH STAGE IS COMPLETED AS DIRECTED BY THE ENGINEER. EXISTING TURF WHICH IS DAMAGED OUTSIDE THE LIMITS OF CONSTRUCTION SHALL BE REESTABLISHED WITH SEED AS DIRECTED BY THE ENGINEER AT THE CONTRACTOR'S EXPENSE.
- UTILITY LOCATIONS WERE PLOTTED FROM INFORMATION FURNISHED BY THE VARIOUS UTILITY COMPANIES AND THEIR ACCURACY SHOULD BE CONSIDERED APPROXIMATE. NO RESPONSIBILITY IS ACCEPTED FOR THE LOCATIONS AS SHOWN OR THAT ALL UTILITY FACILITIES ARE SHOWN. UTILITY LOCATIONS SHOWN IN THE PLANS ARE APPROXIMATE AND REPRESENT LOCATIONS PRIOR TO ANY UTILITY RELOCATIONS REQUIRED TO ACCOMMODATE THE PROPOSED CONSTRUCTION. THE CONTRACTOR IS ADVISED THAT SOME UTILITY COMPANIES MAY HAVE RELOCATED THEIR FACILITIES PRIOR TO THE START OF CONSTRUCTION UNDER THIS CONTRACT. BEFORE COMMENCING CONSTRUCTION OPERATIONS THE CONTRACTOR SHALL OBTAIN FROM THE ENGINEER ANY AVAILABLE INFORMATION REGARDING THE RELOCATED POSITIONS OF UTILITIES WITHIN THE PROJECT LIMITS. WHETHER VARIOUS UTILITIES HAVE BEEN RELOCATED OR REMAIN IN THEIR ORIGINAL LOCATION, IT SHALL BE THE RESPONSIBILITY OF THE CONTRACTOR TO DETERMINE THEIR EXACT LOCATION AT THE TIME OF CONSTRUCTION AND TO PROTECT SAME. THE CONTRACTOR'S ATTENTION IS DIRECTED TO THE SPECIAL PROVISION ENTITLED "COOPERATION WITH UTILITIES" AND ARTICLE 107.31 OF THE STANDARD SPECIFICATIONS.
- THE CONTRACTOR SHALL COORDINATE CONSTRUCTION ACTIVITIES WITH UTILITY COMPANIES.
- THE CONTRACTOR SHALL BE RESPONSIBLE FOR PROTECTING UTILITY PROPERTY FROM CONSTRUCTION OPERATIONS AS OUTLINED IN ARTICLE 107.31 OF THE STANDARD SPECIFICATIONS. THE JULIE NUMBER IS 800-892-0123. A MINIMUM OF 48 HOURS ADVANCE NOTICE IS REQUIRED.
- UTILITY OWNERS:  
\*INDICATES J.U.L.L.E. MEMBER
 

* URBANA-CHAMPAIGN SANITARY DISTRICT P.O. BOX 669 URBANA, ILLINOIS 61803 (217) 367-3409	* INSIGHT 303 FAIRLAWN DRIVE URBANA, ILLINOIS 61801 (217) 384-2510
* ILLINOIS-AMERICAN WATER COMPANY 201 DEVONSHIRE DR. CHAMPAIGN, ILLINOIS 61820 (217) 373-3258	* AT&T 201 S. NEIL STREET CHAMPAIGN, ILLINOIS 61820 (217) 398-7990
* AMEREN IP (ELECTRICAL DIST./GAS) 1112 ANTHONY DRIVE URBANA, ILLINOIS 61801 (217) 383-7280	UNIVERSITY OF ILLINOIS OPERATIONS AND MAINTENANCE PHYSICAL PLANT SERVICE BUILDING 1501 S. OAK STREET CHAMPAIGN, ILLINOIS 61821 217-333-3463
- AT THIS TIME THERE ARE NO KNOWN UTILITY CONFLICT WITH THE UI LATERAL NATURAL GAS LINE AS RELOCATED IN CONTRACT \*90758. THE CONTRACTOR MAY OBTAIN AS BUILT PLANS FROM THE UNIVERSITY OF ILLINOIS OPERATIONS AND MAINTENANCE DEPARTMENT.
- THE CONTRACTOR SHALL PROVIDE AND INSTALL TWO WEIGHTED SAND BAGS ON EACH TYPE II BARRICADE USED. (ONE WEIGHTED SAND BAG ACROSS EACH BOTTOM RAIL.)
- FOR STABILIZATION, ALL TYPE III BARRICADES SHALL REQUIRE A MINIMUM OF FOUR SAND BAGS PER BARRICADE.
- THE CITY OF CHAMPAIGN SHALL BE RESPONSIBLE FOR NOTIFYING THE PUBLIC, THE UNITED STATES POSTAL SERVICE, AND THE EMERGENCY SERVICE AGENCIES OF ALL CHANGES IN THE TRAFFIC MAINTENANCE PLANS. THE CONTRACTOR SHALL NOTIFY THE CITY OF CHAMPAIGN OF ALL CHANGES IN THE TRAFFIC MAINTENANCE PLANS A MINIMUM OF 48 HOURS IN ADVANCE.
- THE CONTRACTOR SHALL BE RESPONSIBLE FOR CLEANUP OF THE SITE PRIOR TO FINAL ACCEPTANCE IN ACCORDANCE WITH ARTICLE 104.06 OF THE STANDARD SPECIFICATIONS. THIS WORK SHALL ALSO INCLUDE CLEANING ALL DRAINAGE FACILITIES OF FOREIGN MATERIALS.

Revised 3/28/08

REVISIONS		ILLINOIS DEPARTMENT OF TRANSPORTATION
NAME	DATE	
RLH	3/18/08	<h2>HIGHWAY STANDARDS AND GENERAL NOTES</h2> <p>SCALE: As Noted DATE: 01/04/08</p> <p>DRAWN BY SLD CHECKED BY JTP</p>

DESIGN FIRM REGISTRATION  
No. 184-000480  
116 SOUTH CLINTON STREET  
SUITE 600  
CHICAGO, IL 60661  
PHONE : 312.648.0900  
FAX : 312.648.0204



P:\811026\811026\811026\811026\General Notarized 3/27/2008

**SUMMARY OF QUANTITIES**

F.A. RTE.	SECTION	COUNTY	TOTAL SHEETS	SHEET NO.
I-57	00-00374-03-LS	CHAMPAIGN	21	3
STA.	TO STA.			
FED. ROAD DIST. NO.	ILLINOIS	FED. AID PROJECT		
CONTRACT NO. 91382				

ITEM NUMBER	PAY ITEM	CONSTRUCTION CODE	UNIT	TOTAL QUANTITY
+ 21101615	TOPSOIL FURNISH AND PLACE, 4"	Y003	SQ YD	970
+ 25000210	SEEDING, CLASS 2A	Y003	ACRE	0.2
+ 25000400	NITROGEN FERTILIZER NUTRIENT	Y003	POUND	18
+ 25000500	PHOSPHORUS FERTILIZER NUTRIENT	Y003	POUND	18
+ 25000600	POTASSIUM FERTILIZER NUTRIENT	Y003	POUND	18
+ 25100105	MULCH METHOD 1	Y003	ACRE	0.2
+ 25100635	HEAVY DUTY EROSION CONTROL BLANKET	Y003	SQ YD	217
+ 25200200	SUPPLEMENTAL WATERING	Y003	UNIT	10
50200100	STRUCTURE EXCAVATION	Y003	CU YD	121
50300225	CONCRETE STRUCTURES	Y003	CU YD	155.6
• 50800205	REINFORCEMENT BARS, EPOXY COATED	Y003	POUND	10820
• 50901755	PARAPET RAILING, SPECIAL	Y003	FOOT	539
51201400	FURNISHING STEEL PILES HP10X42	Y003	FOOT	833
51202305	DRIVING PILES	Y003	FOOT	833
51203400	TEST PILE STEEL HP10X42	Y003	EACH	3
+ 63100167	TRAFFIC BARRIER TERMINAL TYPE 1, SPECIAL (TANGENT)	Y003	EACH	1
+ 63304385	TRAFFIC BARRIER TERMINAL REMOVAL, TYPE 1	Y003	EACH	1
67100100	MOBILIZATION	Y003	L SUM	1
+ 78201000	TERMINAL MARKER - DIRECT APPLIED	Y003	EACH	1
+ 80400100 <sup>5</sup>	ELECTRIC SERVICE INSTALLATION, SPECIAL	Y003	EACH	1
+ 81012200	CONDUIT IN TRENCH, 3/4" DIA., PVC	Y003	FOOT	354
+ 81012600	CONDUIT IN TRENCH, 2" DIA., PVC	Y003	FOOT	108
+ 81021330	CONDUIT PUSHED, 2" DIA., PVC	Y003	FOOT	100
+ 81300800	JUNCTION BOX, STAINLESS STEEL, ATTACHED TO STRUCTURE, 18" x 12" x 6"	Y003	EACH	1
<del>81400750</del>	<del>HANDHOLE, COMPOSITE CONCRETE</del>	Y003	EACH	<del>1</del>
+ 81603035	UNIT DUCT, 600V, 2-1C NO. 6, 1/C NO. 6 GROUND (XLP-TYPE USE), 1" DIA. POLYETHYLENE	Y003	FOOT	700
+ 81702450	ELECTRICAL CABLE IN CONDUIT, 600V (XLP-TYPE USE) 3 1/C <sup>NO.</sup> X10	Y003	FOOT	1254
+ 81900200	TRENCH AND BACKFILL FOR ELECTRICAL WORK	Y003	FOOT	1161
+ 82500510	LIGHTING CONTROLLER TYPE CB-RCS 60 AMP-240 VOLT	Y003	EACH	1
+ A2002420	TREE, BETULA NIGRA HERITAGE (HERITAGE RIVER BIRCH), 2 1/2" CALIPER, BALLED AND BURLAPPED	Y003	EACH	12
+ D2015401	SHRUB, JUNIPERUS CHINENSIS 'KALLAY'S COMPACTA' (KALLAY COMPACT JUNIPER), 5 GALLON	Y003	EACH	84
+ X0325403	CONDUIT, FLEXIBLE NON-METALLIC, WEATHERPROOF, 2"	Y003	EACH	4
+ XX005856	MULCH - SHREDDED HARDWOOD BARK, 3" DEPTH	Y003	CU YD	40
+ XX006302	NEPETA X FAASSENII 'WALKERS LOW' (WALKERS LOW CATMINT)	Y003	EACH	1000
• Z0013798	CONSTRUCTION LAYOUT	Y003	L SUM	1
• Z0076600	TRAINEES	Y003	HOUR	
+ XX007293	PERENNIAL, FALLOPIA JAPONICA 'COMPACTA' (COMPACT FLEECE FLOWER), 1 GALLON	Y003	EACH	3480
+ XX007294	PERENNIAL, MISCANTHUS SINENSIS 'PURPURASCENS' (PURPLE SILVER GRASS), 2 GALLON	Y003	EACH	40

ITEM NUMBER	PAY ITEM	CONSTRUCTION CODE	UNIT	TOTAL QUANTITY
+ X8250500 • <del>5000841</del>	LIGHTING UNIT X COMPLETE, SPECIAL	Y003	EACH	6
+ X0324390 • <del>5000842</del>	FLOOD LIGHTING UNIT-B, COMPLETE	Y003	EACH	6
+ • <del>XX007298</del>	MASONRY COLUMN, LARGE	Y003	EACH	2
+ • <del>XX007299</del>	MASONRY COLUMN, SMALL	Y003	EACH	4
70100420	TRAFFIC CONTROL AND PROTECTION, STANDARD 701411	Y003	EACH	2
70100700	TRAFFIC CONTROL AND PROTECTION, STANDARD 701406	Y003	L SUM	1
70100800	TRAFFIC CONTROL AND PROTECTION, STANDARD 701401	Y003	L SUM	1
70102630	TRAFFIC CONTROL AND PROTECTION, STANDARD 701601	Y003	L SUM	1
+ 81018100	CONDUIT PUSHED, 3/4" DIA., GALVANIZED STEEL	Y003	FOOT	120

+ = SPECIALTY ITEMS

p:\011286\plans\sum\summary of quantities.dgn 3/24/2008

Revised 3/28/08

• SEE SPECIAL PROVISIONS

REVISIONS	
NAME	DATE
RLH	3/18/08

**Clawson**  
ENGINEERS

DESIGN FIRM REGISTRATION NO. 184-000450  
118 SOUTH CLINTON STREET SUITE 800 CHICAGO, IL 60661  
PHONE : 312.648.0900 FAX : 312.648.0204

ILLINOIS DEPARTMENT OF TRANSPORTATION

**SUMMARY OF QUANTITIES**

SCALE: As Noted DATE: 01/04/08

DRAWN BY SLD CHECKED BY JTP

Bench Mark: Chiseled "□" on top center of northeast wingwall of I-57 Bridge S.M. 010-0272 Elev. 724.11

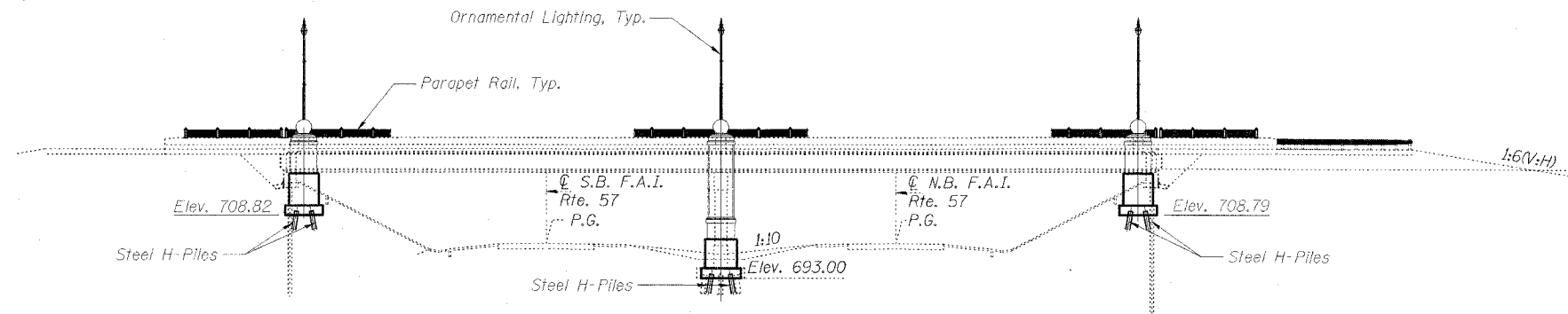
ROUTE NO.	SECTION	COUNTY	TOTAL SHEETS	SHEET NO.	SHEET NO. 4 21 SHEETS
F.A.I. 57	03-0374 -03 LS	Champaign	21	4	
FED. ROAD DIST. NO.	ILLINOIS	FED. AID PROJECT			

Contract # 91382

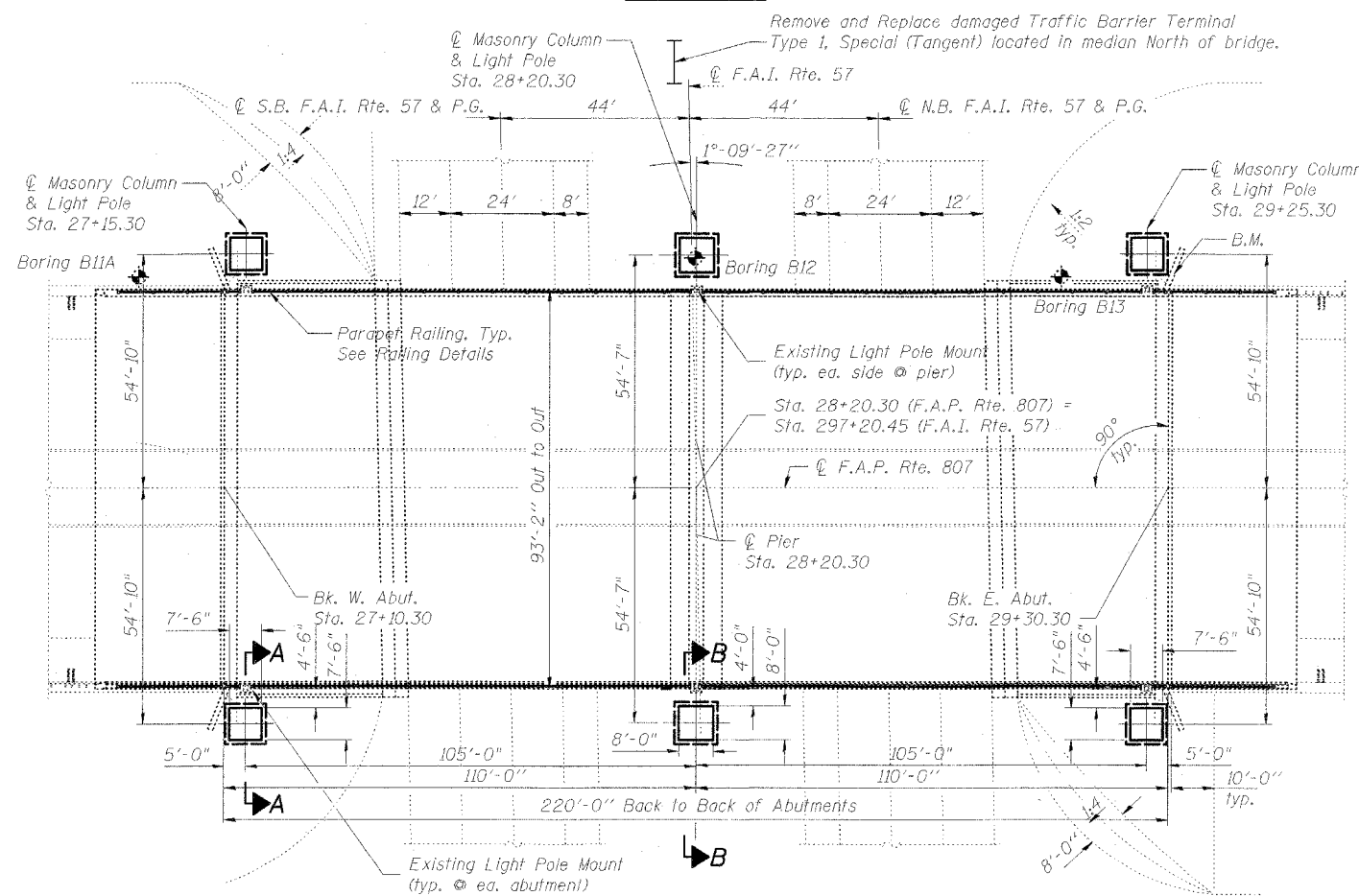
**GENERAL NOTES**

1. Reinforcement bars shall conform to the requirements of ASTM A706 Gr. 60 (IL Modified). See Special Provisions.
2. Reinforcing bars designated (E) shall be epoxy coated.
3. No field welding is permitted except as specified in the contract documents.
4. Concrete Sealer shall be applied to the cast-in-place concrete with rubbed finish. Cost included with Concrete Structures.
5. The Contractor shall drive test piles to 110% of the nominal required bearing specified in production locations at substructures specified or approved by the Engineer before ordering the remainder of piles.
6. All Construction joints shall be bonded.
7. Calculated weight of Structural Steel:
  - =4,080 lbs M270 Gr. 36
  - =14,890 lbs A500
  - =480 lbs A307

DESIGN SPECIFICATIONS  
2002 AASHTO STANDARD  
SPECIFICATIONS, 17TH EDITION. (LFD)



**ELEVATION**



**PLAN**

DESIGNED	SLD
CHECKED	SMM
DRAWN	SLD
CHECKED	SMM

Notes:  
For Sections A-A and B-B, see sheet 5 of 21.



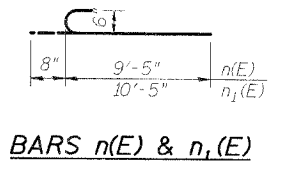
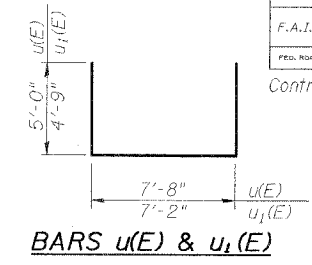
*Sean Marzano*  
PROFESSIONAL ENGINEER  
CLARK DIETZ, INC.  
DATE: 1/15/08  
LICENSE EXPIRES 11-30-09

**GENERAL PLAN AND ELEVATION  
CURTIS ROAD BRIDGE ENHANCEMENTS  
CHAMPAIGN COUNTY  
STATION 297+20.45**

**Clark Dietz**  
ENGINEERS

DESIGN FIRM REGISTRATION  
No. 184-000450  
1817 SOUTH NEIL STREET  
SUITE 100  
CHAMPAIGN, IL 61820  
PHONE : 217.373.8900  
FAX : 217.373.8923

Contract # 91392



**BILL OF MATERIAL**

Bar	No.	Size	Length	Shape
u(E)	24	5	7'-8"	—
h <sub>1</sub> (E)	48	5	7'-2"	—
n(E)	60	6	10'-1"	U
n <sub>1</sub> (E)	112	6	11'-1"	U
t(E)	80	8	9'-8"	—
t <sub>1</sub> (E)	144	8	9'-2"	—
u <sub>1</sub> (E)	32	5	17'-8"	U
u <sub>1</sub> (E)	72	5	17'-6"	U
Structure Excavation			Cu. Yd.	121
Concrete Structures			Cu. Yd.	155.6
Reinforcement Bars, Epoxy Coated			Pound	10,820
Furnishing Steel Piles, HP 10x42			Foot	833
Driving Piles			Foot	833
Test Pile,			Each	3

Bars designated (E) shall be epoxy coated.  
 HP piles shall be AASHTO M270 Grade 50.  
 \*Plates and angles shall be AASHTO M270 Grade 36.  
 \*HSS sections shall be ASTM A500 Grade B.  
 \*Plates, angles, and HSS sections shall be shop primed and painted with field touch-up. See Special Provisions.  
 \*Cost included with Masonry Column, Large and Masonry Column, Small  
 \*\*Cost included with Concrete Structures

**SMALL COLUMN PILE DATA**

Type: HP 10x42  
 Nominal Required Bearing: 108 kips  
 Factored Resistance Available: 43 kips  
 Est. Length: 38 ft  
 No. Production Piles: 14  
 No. Test Piles: 2

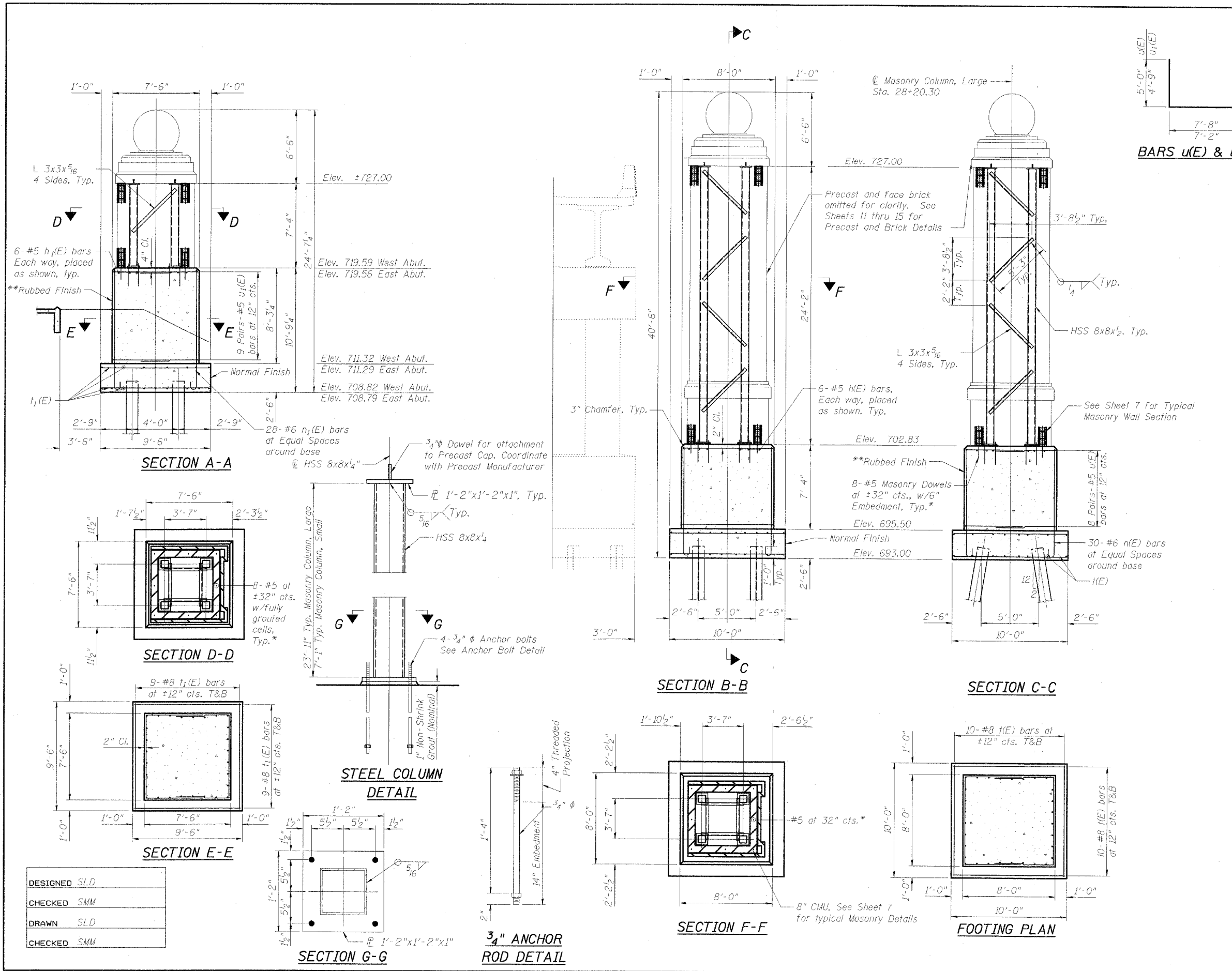
**LARGE COLUMN PILE DATA**

Type: HP 10x42  
 Nominal Required Bearing: 295 kips  
 Factored Resistance Available: 118 kips  
 Est. Length: 43 ft  
 No. Production Piles: 7  
 No. Test Piles: 1

**STRUCTURE DETAILS**

**CURTIS ROAD BRIDGE ENHANCEMENTS  
 CHAMPAIGN COUNTY  
 STATION 297+20.45**

**DESIGN FIRM REGISTRATION**  
 No. 184-000450  
**Clark Dietz**  
 ENGINEERS  
 1817 SOUTH NEIL STREET  
 SUITE 100  
 CHAMPAIGN, IL 61820  
 PHONE : 217.373.8900  
 FAX : 217.373.8923

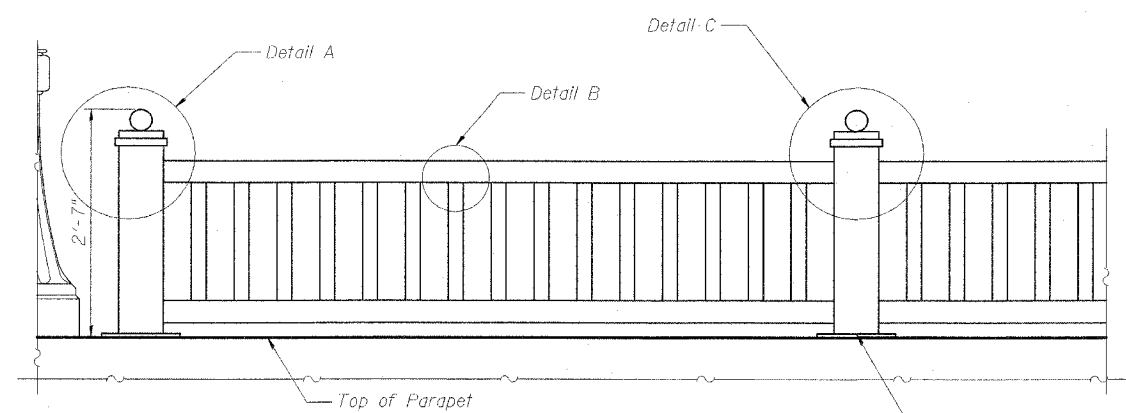


ROUTE NO.	SECTION	COUNTY	TOTAL SHEETS	SHEET NO.
F.A.I. 57	00-00374-03-LS	Champaign	21	6
PROJ. ROAD DIST. NO.	ILLINOIS	FED. AID PROJECT		

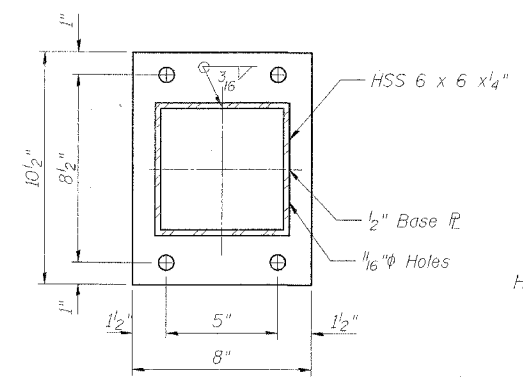
SHEET NO. 6  
21 SHEETS

Contract # 91382

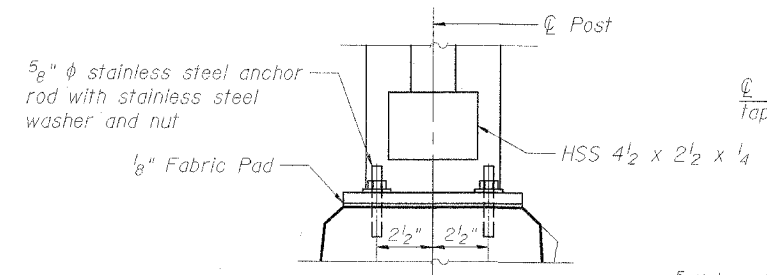
Note:  
All post, railing, splices, and bent plates shall be galvanized and painted. See Special Provisions.



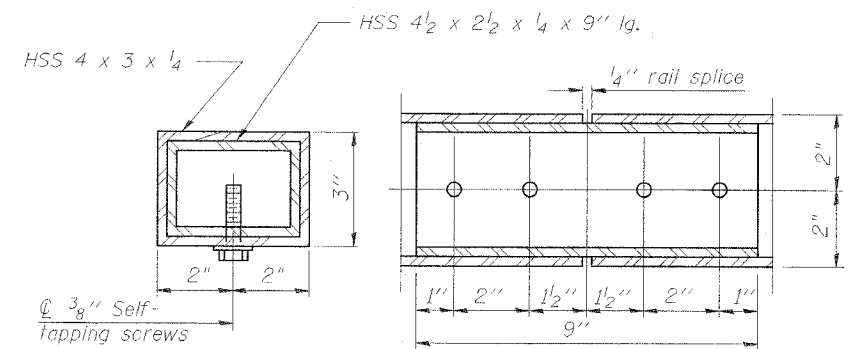
**PARAPET RAILING  
ELEVATION**



**BASE PLATE**

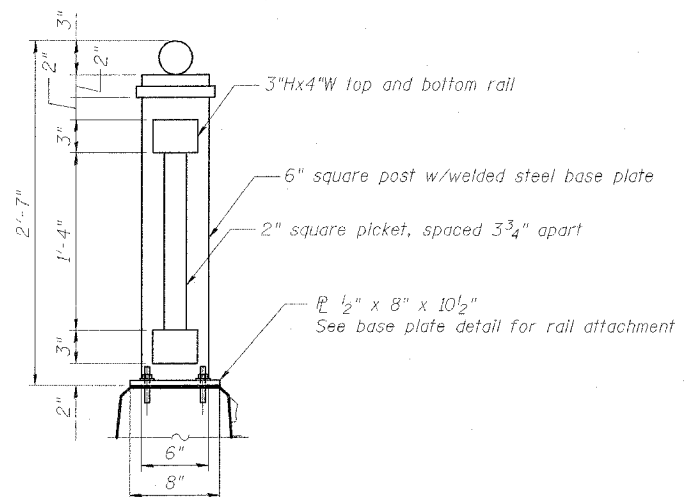


**ANCHOR BOLT DETAILS**

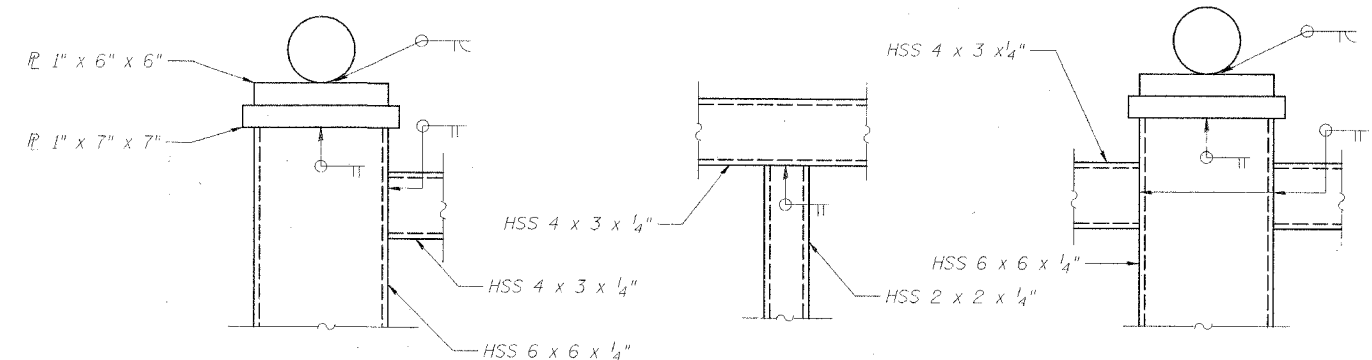


**RAIL SPLICE**

5/8" anchor rods shall be drilled and set according to Article 509.06 of the Standard Specifications. Embedment shall be according to the manufacturer's specifications.



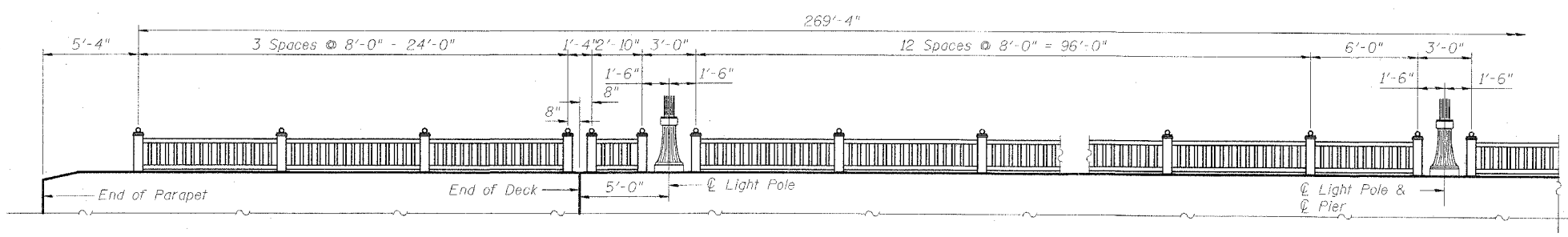
**PARAPET RAILING  
SECTION**



**DETAIL A**

**DETAIL B**

**DETAIL C**



**RAIL POST SPACING**

(Typical North and South Side of bridge.  
Railing is symmetric about centerline of Pier)

**BILL OF MATERIAL**

Item	Unit	Quantity
Parapet Railing, Special	Foot	539

**RAILING DETAILS  
CURTIS ROAD BRIDGE ENHANCEMENTS  
CHAMPAIGN COUNTY  
STATION 297+20.45**

DESIGNED	SLD
CHECKED	SMM
DRAWN	SLD
CHECKED	SMM

**Clark Dietz**  
ENGINEERS

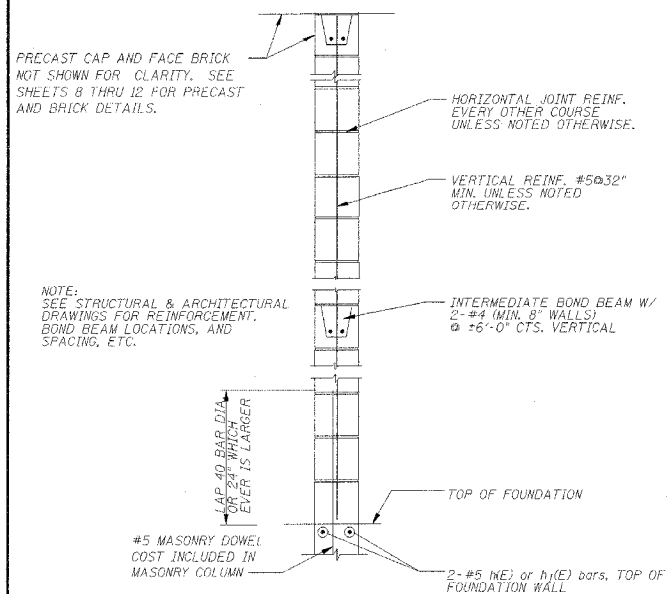
DESIGN FIRM REGISTRATION  
No. 184-000450  
1817 SOUTH NEIL STREET  
SUITE 100  
CHAMPAIGN, IL 61820  
PHONE : 217.373.8900  
FAX : 217.373.8923

ROUTE NO.	SECTION	COUNTY	SHEETS	SHEET NO.
F.A.I. 57	00-00374 -03-15	Champaign	21	7
FED. ROAD DIST. NO.	ILLINOIS	FED. AID PROJECT		

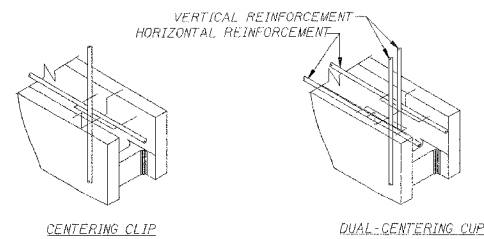
SHEET NO. 7

21 SHEETS

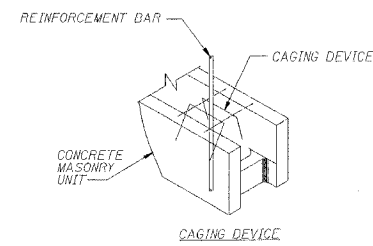
Contract # 91382



TYPICAL MASONRY WALL

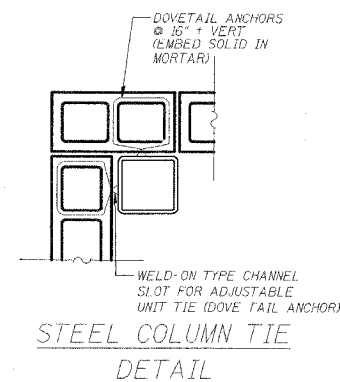


CENTERING AND CAGING DEVICES



NOTE: CENTERING AND CAGING DEVICES SHALL BE FORMED FROM #9 HARD STEEL WIRE, SPOT WELDED AND GALVANIZED.

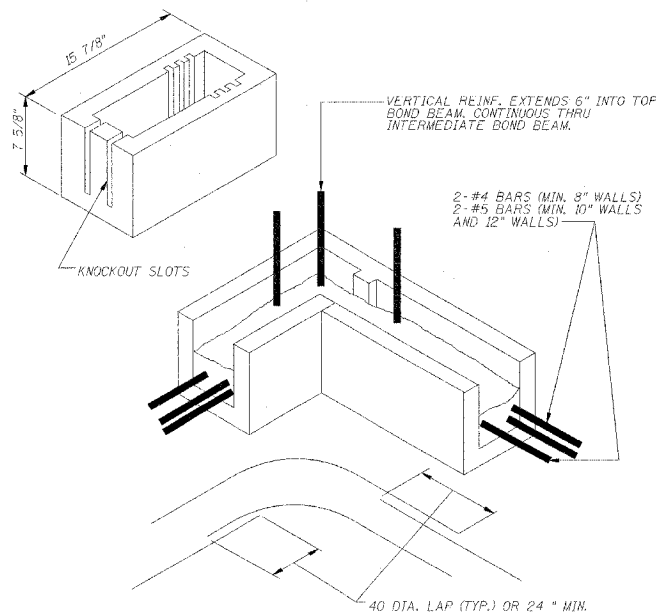
CENTERING AND CAGING DEVICES



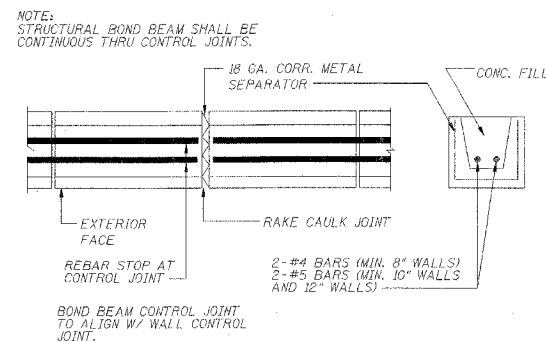
STEEL COLUMN TIE DETAIL

**MASONRY NOTES:**

- MASONRY WORK ON THIS PROJECT SHALL CONFORM TO ALL REQUIREMENTS OF ACI 530.1-99, SPECIFICATION FOR MASONRY STRUCTURES, PUBLISHED BY THE AMERICAN CONCRETE INSTITUTE (ACI), DETROIT, MICHIGAN, EXCEPT AS MODIFIED BY THE REQUIREMENTS OF THESE CONTRACT DOCUMENTS.
- CONTRACTOR SHALL SUBMIT SHOP DRAWINGS SHOWING ALL WALL REINFORCING.
- CONCRETE MASONRY UNITS SHALL BE IN ACCORDANCE WITH ASTM C90, GRADE N, TYPE I.
- MORTAR SHALL CONFORM TO ASTM C270, TYPE S MORTAR.
- COMPRESSIVE STRENGTH OF CONCRETE MASONRY (f'm) SHALL BE 1500 PSI MINIMUM.
- BAR REINFORCEMENT SHALL CONFORM TO ASTM A615 GRADE 60.
- LENGTH OF BAR SPLICES SHALL BE EQUAL TO 48 BAR DIAMETERS.
- JOINT REINFORCEMENT SHALL BE MADE OF COLD DRAWN WIRE AND SHALL CONFORM TO ASTM A82. JOINT REINFORCEMENT SHALL BE:
  - 3-9 GA. WIRE, LADDER TYPE - FOR WALLS WITH BRICK VENEER
- JOINT REINFORCEMENT, TIES AND ANCHORS SHALL BE GALVANIZED IN ACCORDANCE WITH ACI 530.1.
- JOINT REINFORCEMENT SHALL BE PLACED IN ALL MASONRY WALLS AND SPACED 16" O.C., UNLESS OTHERWISE NOTED.
- ALL CELLS WITH REINFORCEMENT, BOND BEAMS, MASONRY LINTELS AND SILLS SHALL BE FULLY GROUTED. GROUT SHALL CONFORM TO ASTM C476 AND SHALL HAVE 28-DAY COMPRESSIVE STRENGTH OF 2000 PSI MINIMUM.
- VERTICAL REINFORCEMENT SHALL TERMINATE WITH A 90 DEGREE HOOK AT THE TOP OF ALL WALLS.
- LAY CONCRETE MASONRY UNITS WITH FULL MORTAR COVERAGE ON HORIZONTAL AND VERTICAL FACE SHELLS AND WEBS.
- MASONRY APPURTENANCES INCLUDING MASONRY DOWEL RODS, DOVE TAIL ANCHORS, WIRE REINFORCEMENT, BOND BEAMS AND MASONRY REINFORCEMENT ARE INCLUDED IN THE UNIT PRICE FOR MASONRY COLUMN OF THE SIZE SPECIFIED AND NO ADDITIONAL COMPENSATION WILL BE ALLOWED.



BOND BEAM UNIT AT CORNER



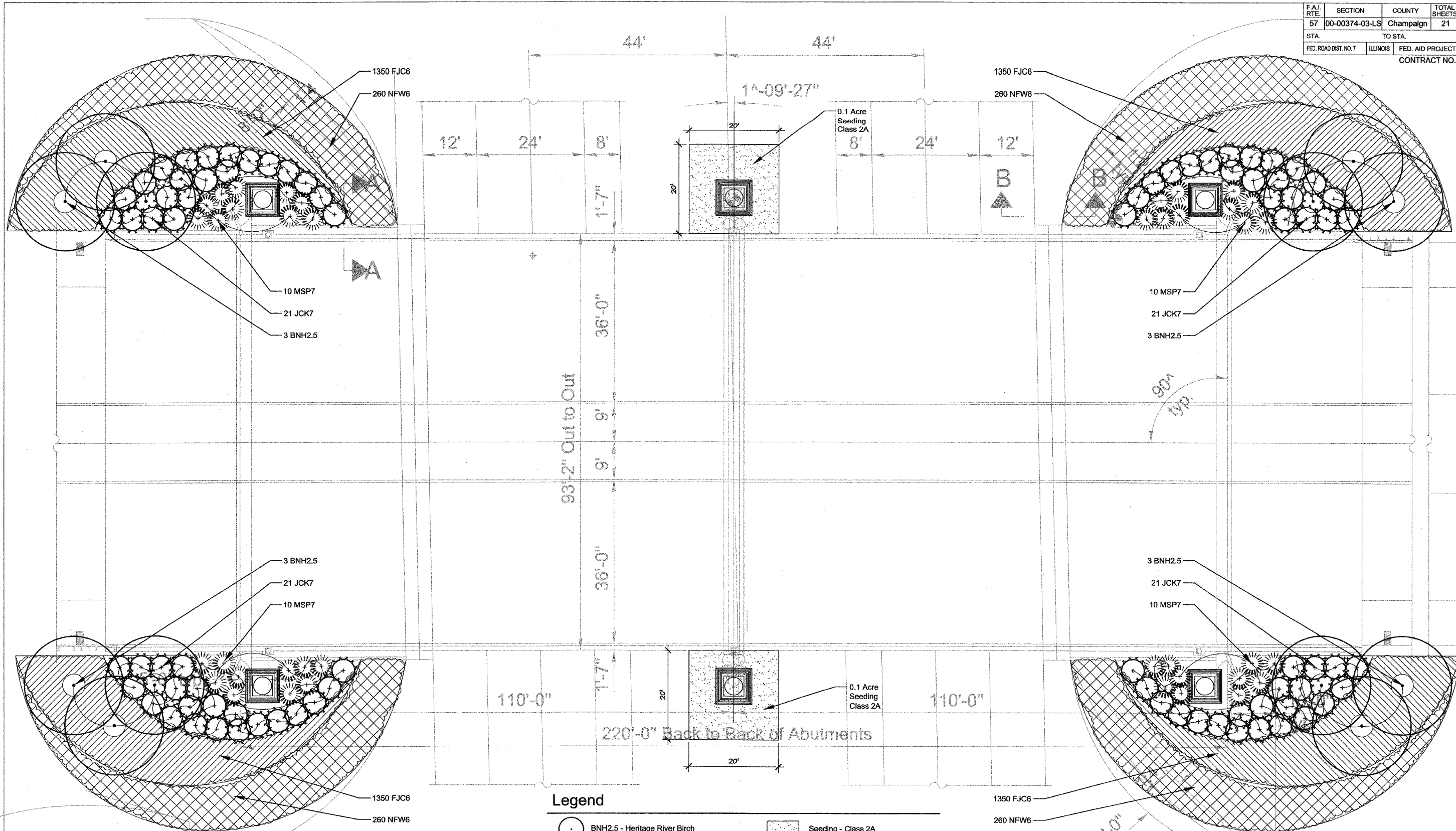
PLAN SECTION  
NON-STRUCTURAL BOND  
BEAM CONTROL JOINT

DESIGNED	SLD
CHECKED	SMM
DRAWN	SLD
CHECKED	SMM

**MASONRY DETAILS**  
**CURTIS ROAD BRIDGE ENHANCEMENTS**  
**CHAMPAIGN COUNTY**  
**STATION 297+20.45**



DESIGN FIRM REGISTRATION  
No. 184-000450  
1817 SOUTH NEIL STREET  
SUITE 100  
CHAMPAIGN, IL 61820  
PHONE : 217.373.8900  
FAX : 217.373.8923



- Legend**
- BNH2.5 - Heritage River Birch
  - MSP7 - Purple Silver Grass
  - JCK7 - Kallay Compact Pfitzer Juniper
  - Seeding - Class 2A
  - FJC6 - Compact Fleece Flower
  - NFW6 - Walker's Low Nepeta

REVISIONS	
NAME	DATE

ILLINOIS DEPARTMENT OF TRANSPORTATION

**PLANTING PLAN**

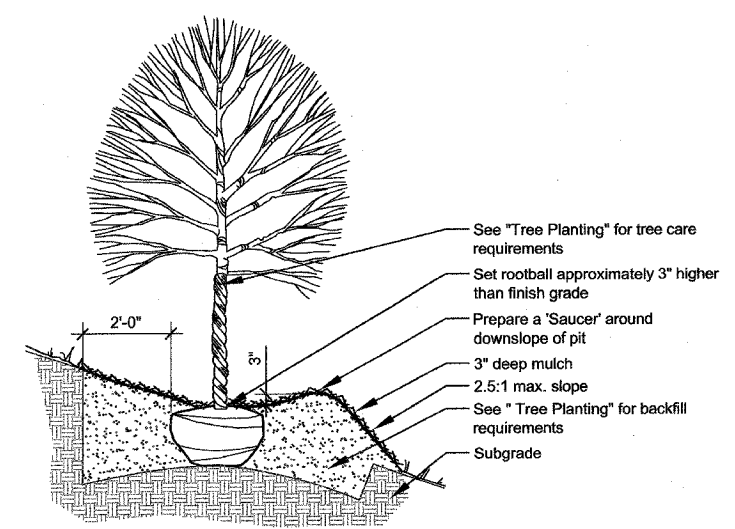
SCALE: AS NOTED  
DATE: 06/15/07

DRAWN BY: JMN  
CHECKED BY: MEU

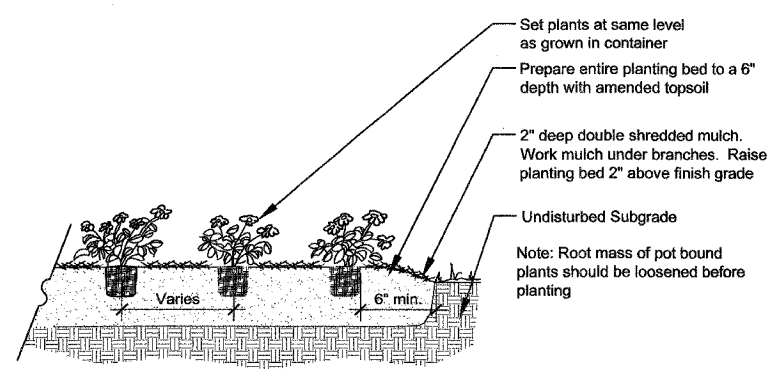
**A** Planting Plan

x-planting plan  
1" = 10'-0"

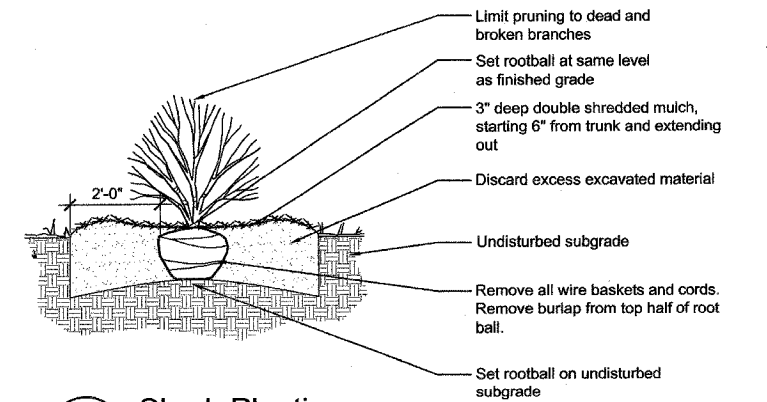




**A** Slope Condition Tree Planting d-tree-slope  
1/2" = 1'-0"



**C** Groundcover / Perennial Planting d-plant-perenn  
1/2" = 1'-0"



**B** Shrub Planting d-plant-shrub  
1/2" = 1'-0"

### Materials List

SHADE TREES

CODE	BOTANICAL NAME	COMMON NAME	SIZE	QUANTITY
BNH2.5	Betula nigra 'Heritage'	Heritage River Birch	2-1/2" Cal	12

EVERGREEN SHRUBS

CODE	BOTANICAL NAME	COMMON NAME	SIZE	QUANTITY
JCK7	Juniperus chinensis 'Kallays Compact'	Kallay Compact Pfitzer Juniper	5 Gal.	84

PERENNIALS

CODE	BOTANICAL NAME	COMMON NAME	SIZE	QUANTITY
FJC6	Fallopia japonica 'Compacta'	Compact Fleece Flower	1 Gal.	3480
NFW6	Nepeta x faassenii 'Walker's Low'	Walker's Low Nepeta	1 Gal.	1000

ORNAMENTAL GRASSES

CODE	BOTANICAL NAME	COMMON NAME	SIZE	QUANTITY
MSP7	Miscanthus sinensis 'Purpurascens'	Purple Silver Grass	2 Gal.	40

LANDSCAPE MATERIALS

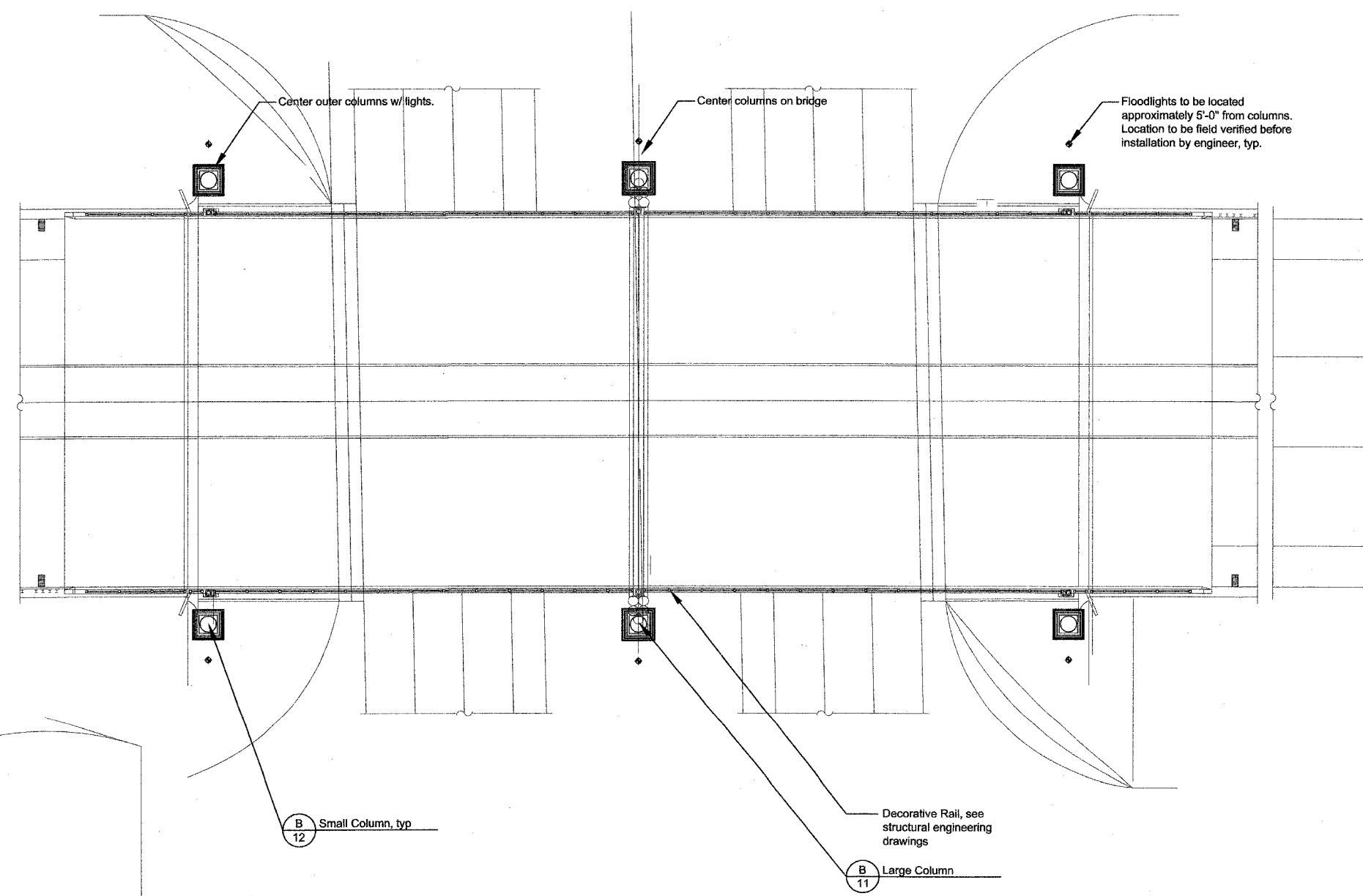
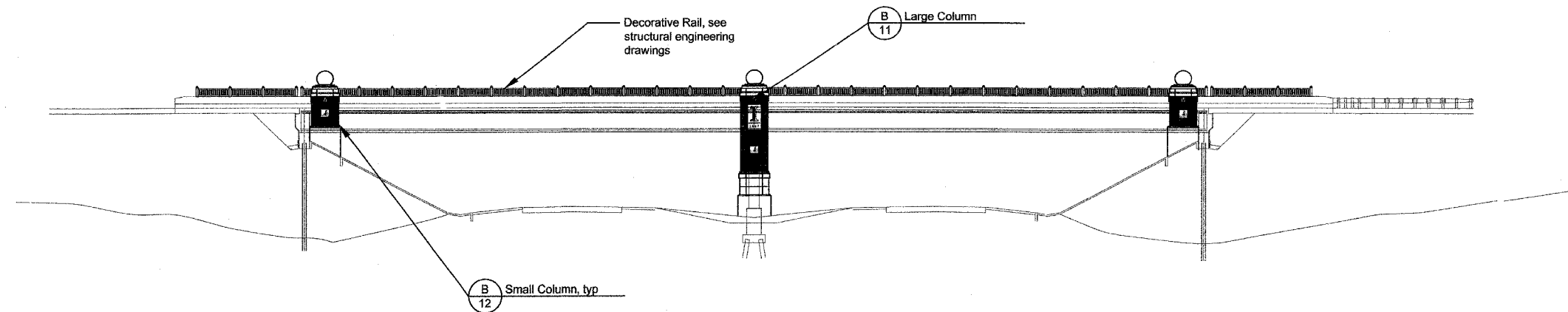
DESCRIPTION	UNIT	QUANTITY
Shredded Hardwood Bark Mulch	CY	40
Heavy Duty Erosion Control Blanket	SY	217

### Planting Notes

1. Tree mulch rings are 5' diameter, typ.
2. Place erosion control blanket along all slopes greater than 4 to 1 and all swales.
3. Do not locate plants within 10' of utility structures. Do not locate plants within 5' horizontally of underground utility lines.
4. Fertilizer shall be bone meal with an approximate analysis of 4% nitrogen and 20% phosphorus or commercial blend fertilizer 10-10-10, applied per manufacturer recommendation.
5. Apply commercial pre-emergent herbicide (swap shot or equal) per manufacturer's recommendation to entire landscape bed.

REVISIONS	
NAME	DATE

F.A.I. RTE.	SECTION	COUNTY	TOTAL SHEETS	SHEET NO.
57	00-00374-03-LS	Champaign	21	10
STA.		TO STA.		
FED. ROAD DIST. NO. 7		ILLINOIS	FED. AID PROJECT	
CONTRACT NO. 91382				



REVISIONS	
NAME	DATE

ILLINOIS DEPARTMENT OF TRANSPORTATION

**MATERIALS PLAN**

SCALE: 1/16" = 1'-0"

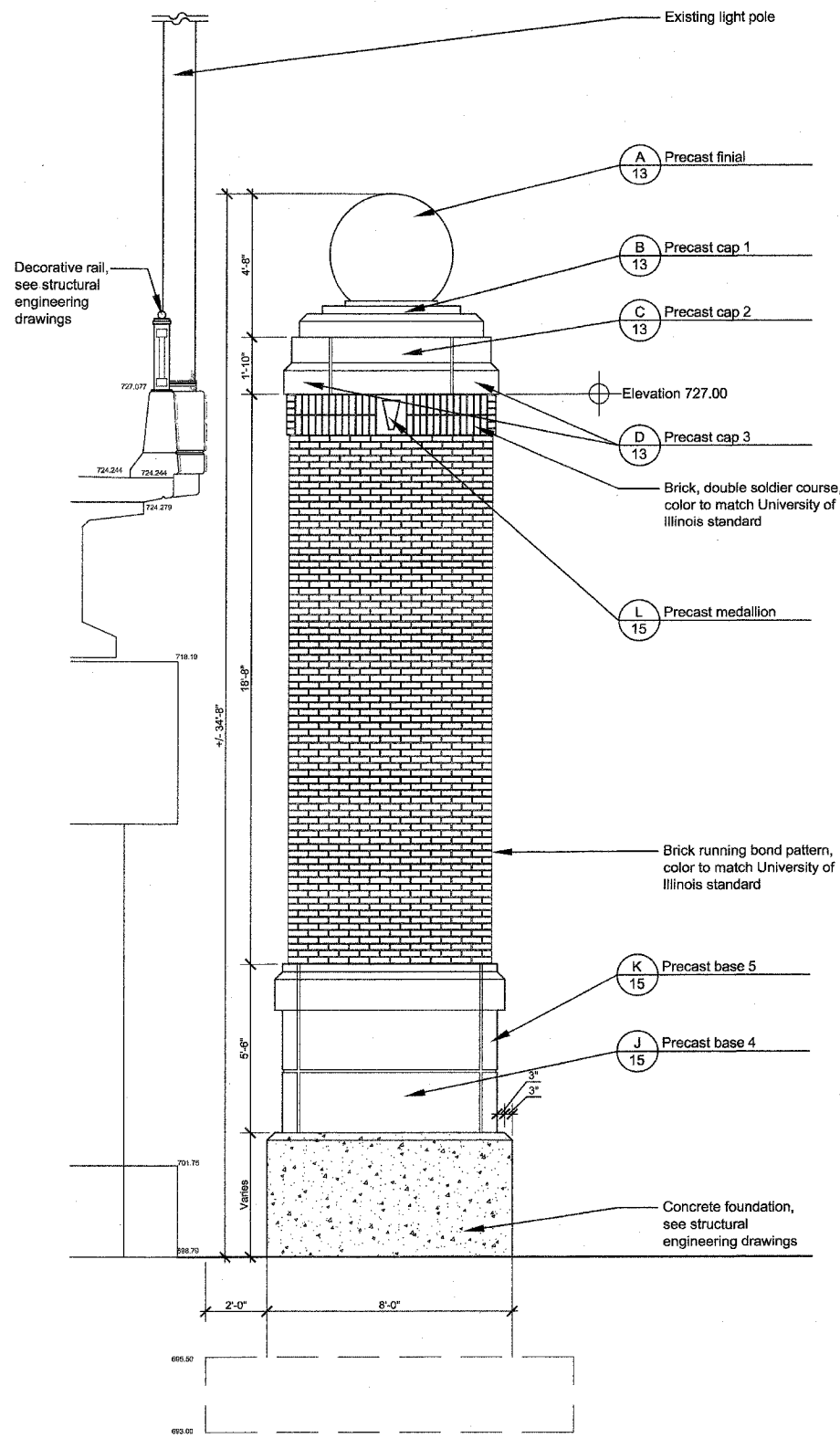
DATE 06/15/07

DRAWN BY: JMN

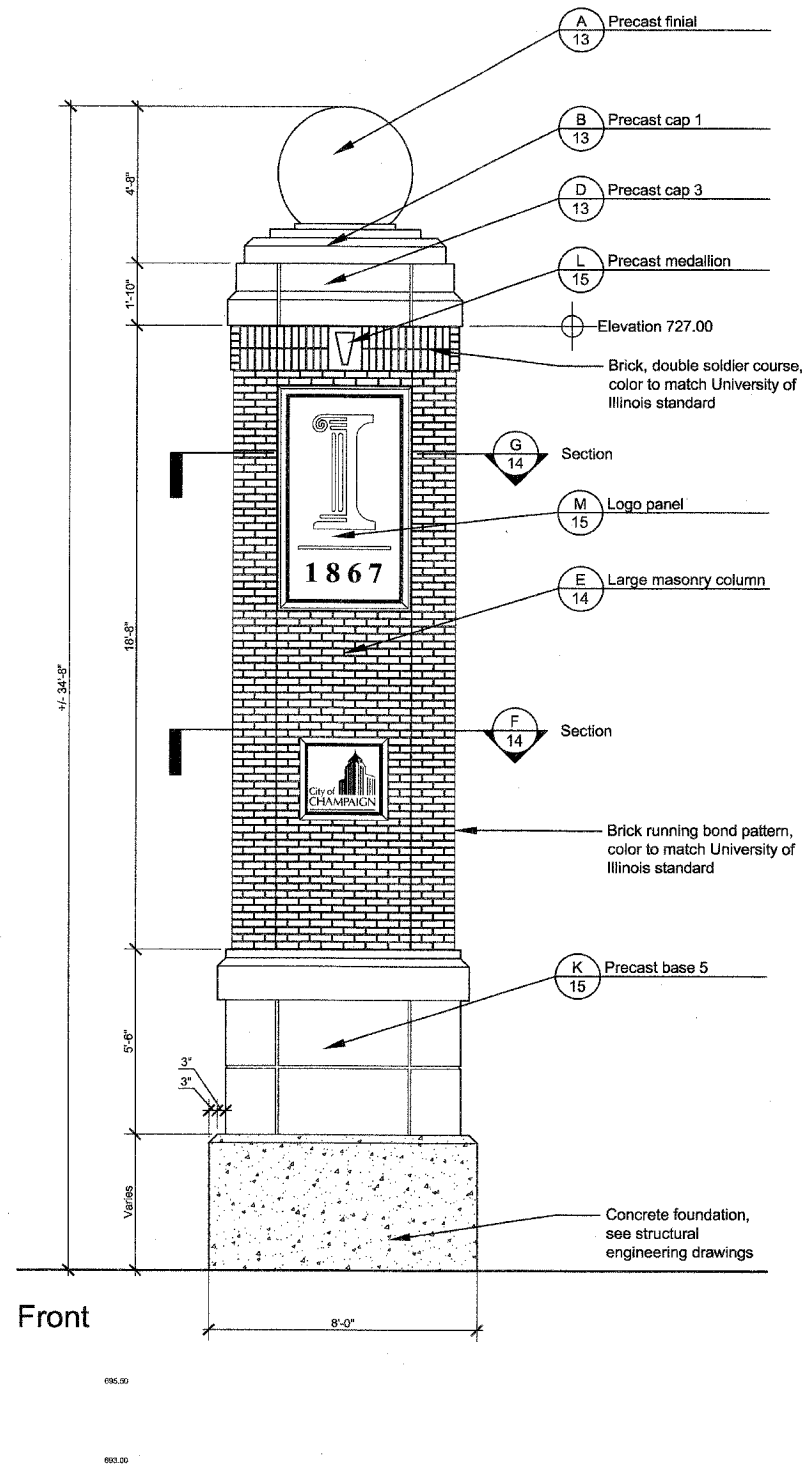
CHECKED BY: MEU

F.A.I. RTE.	SECTION	COUNTY	TOTAL SHEETS	SHEET NO.
57	00-00374-03-LS	Champaign	21	11
STA.	TO STA.			
FED. ROAD DIST. NO. 7	ILLINOIS	FED. AID PROJECT		
CONTRACT NO. 9136Z				

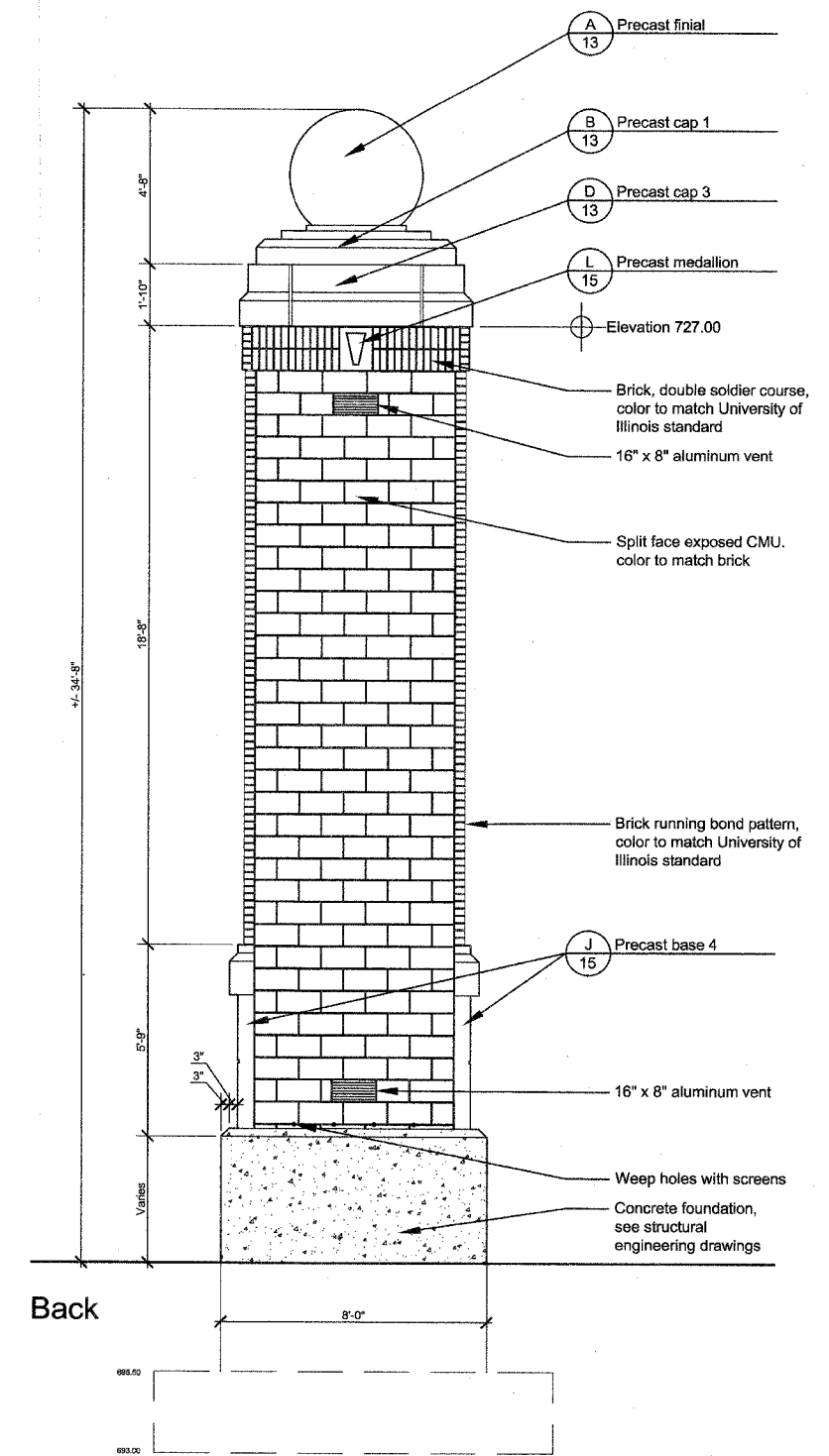
Note: Brick & precast colors to match University of Illinois standards



**A** Large Column- Side Elevation d-largecolumn-elev.dwg  
3/8" = 1'-0"



**B** Large Column- Front and Back Elevations d-lg-col-side-elt.dwg  
3/8" = 1'-0"

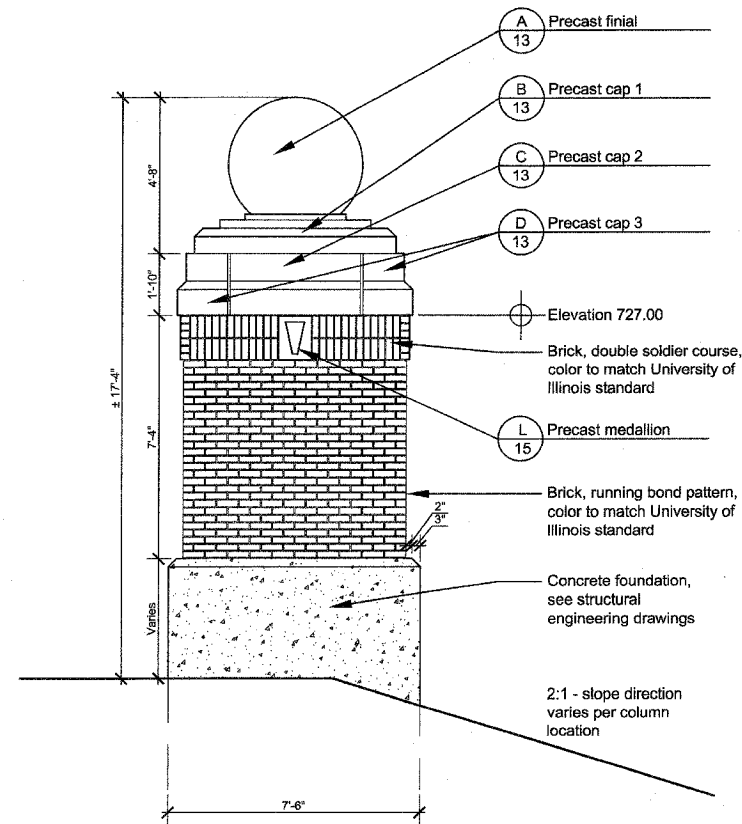


**C** Large Column- Back Elevation d-lg-col-back-elt.dwg  
3/8" = 1'-0"

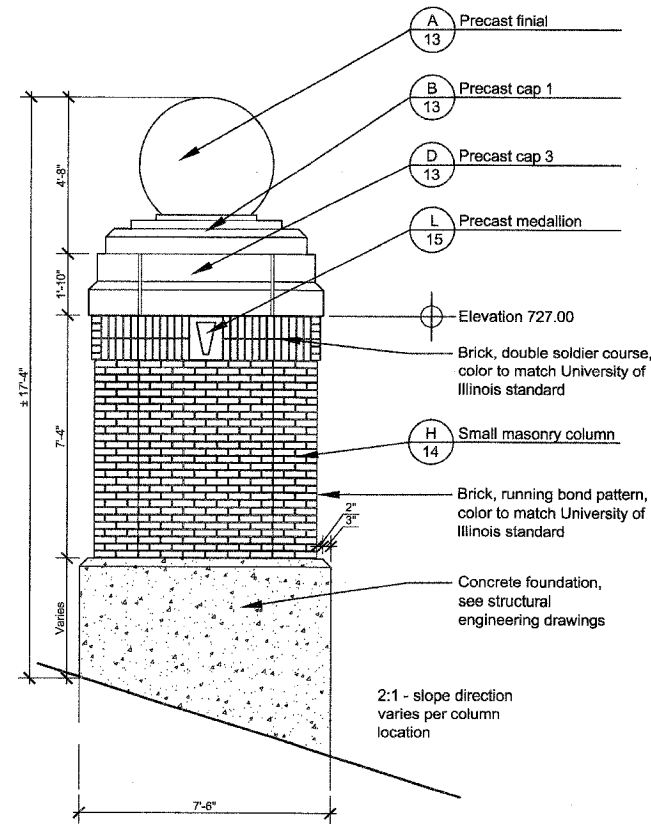
REVISIONS	
NAME	DATE

ILLINOIS DEPARTMENT OF TRANSPORTATION  
**LARGE COLUMN DETAILS**  
SCALE: AS NOTED  
DATE 06/15/07  
DRAWN BY: JMN  
CHECKED BY: MEU

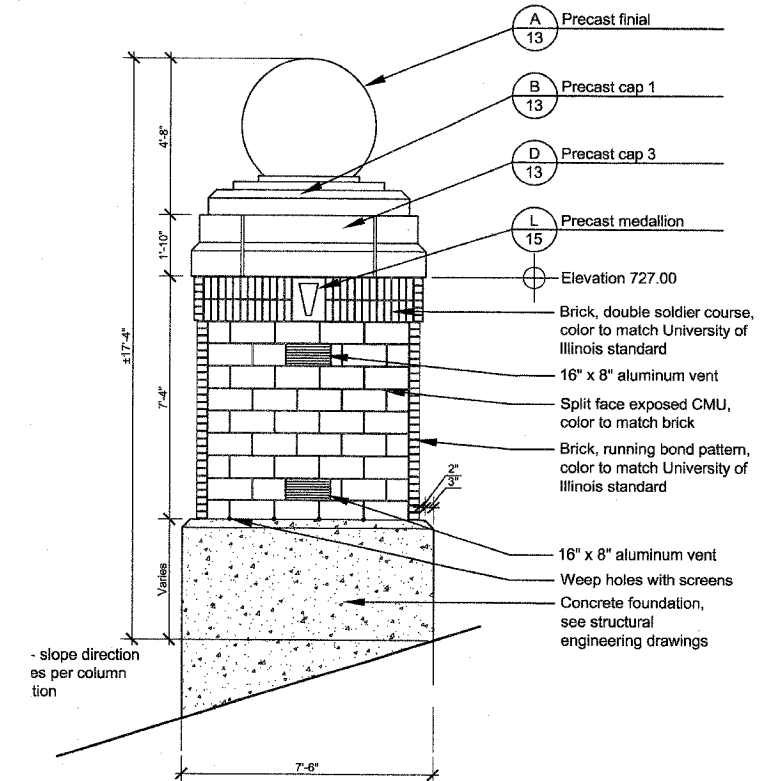
Note: Brick & precast colors to match University of Illinois standards



**A** Small Column- Side Elevation d-smallcolumn-elv.dwg  
3/8" = 1'-0"



**B** Small Column- Front Elevation d-smallcolumn-elv.dwg  
3/8" = 1'-0"

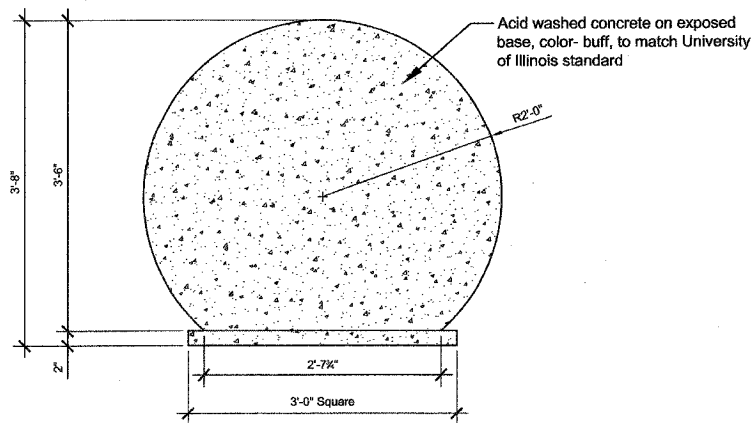


**C** Small Column- Rear Elevation d-smallcolumn-elv.dwg  
3/8" = 1'-0"

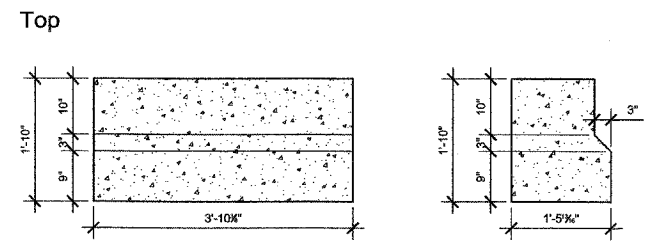
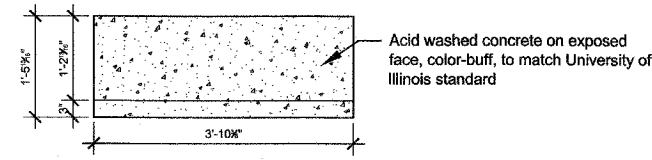
REVISIONS		ILLINOIS DEPARTMENT OF TRANSPORTATION
NAME	DATE	
		SMALL COLUMN DETAILS

SCALE: AS NOTED  
DATE: 06/15/07

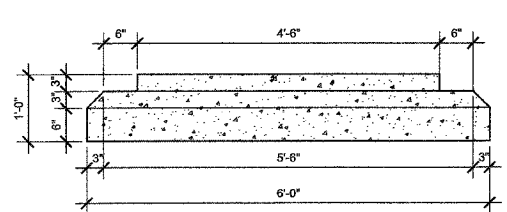
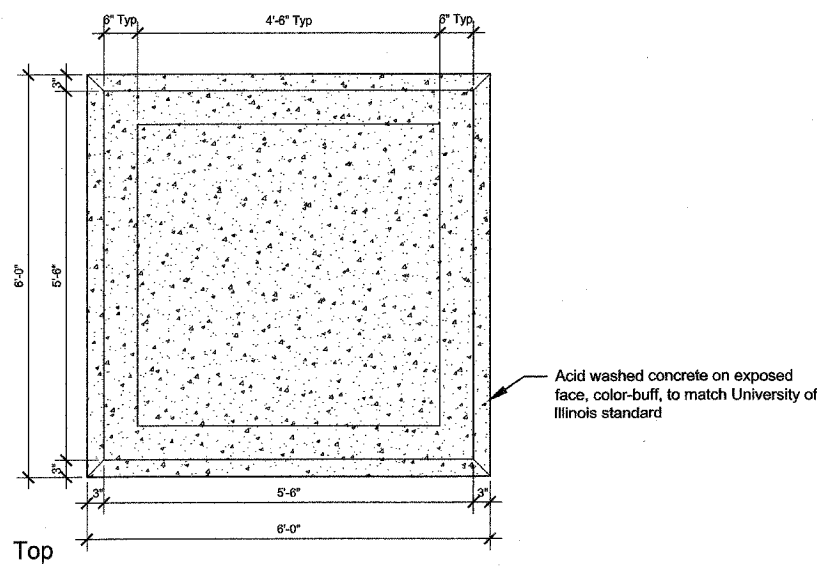
DRAWN BY: JMN  
CHECKED BY: MEU



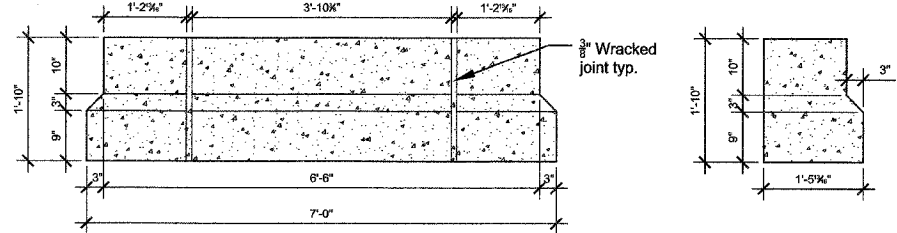
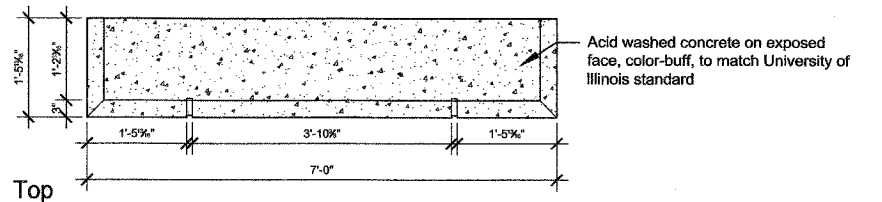
**A** Precast Finial d-precast finial  
1" = 1'-0"



**C** Precast Cap 2 d-precast panel B  
3/4" = 1'-0"

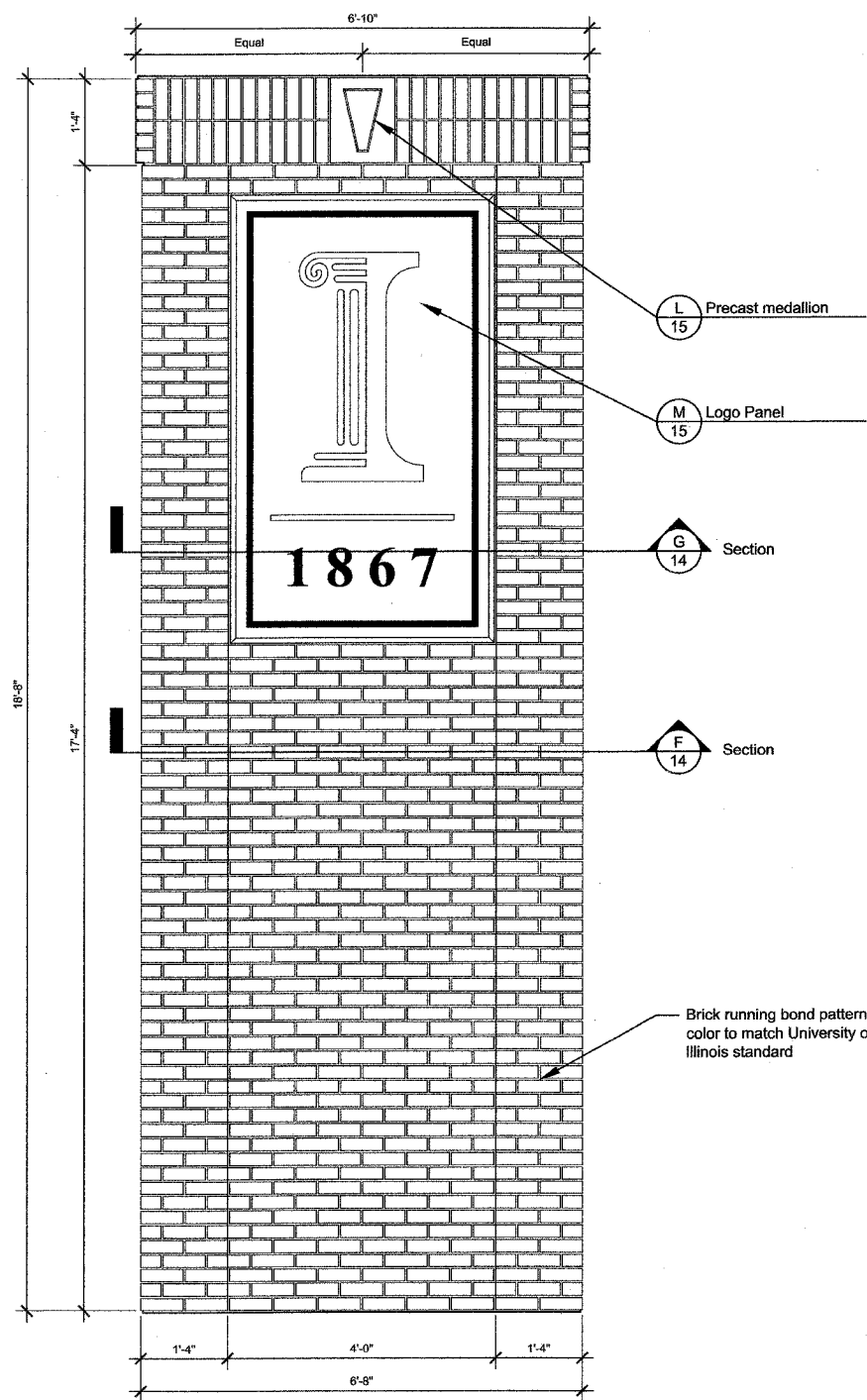


**B** Precast Cap 1 d-precast cap A  
3/4" = 1'-0"

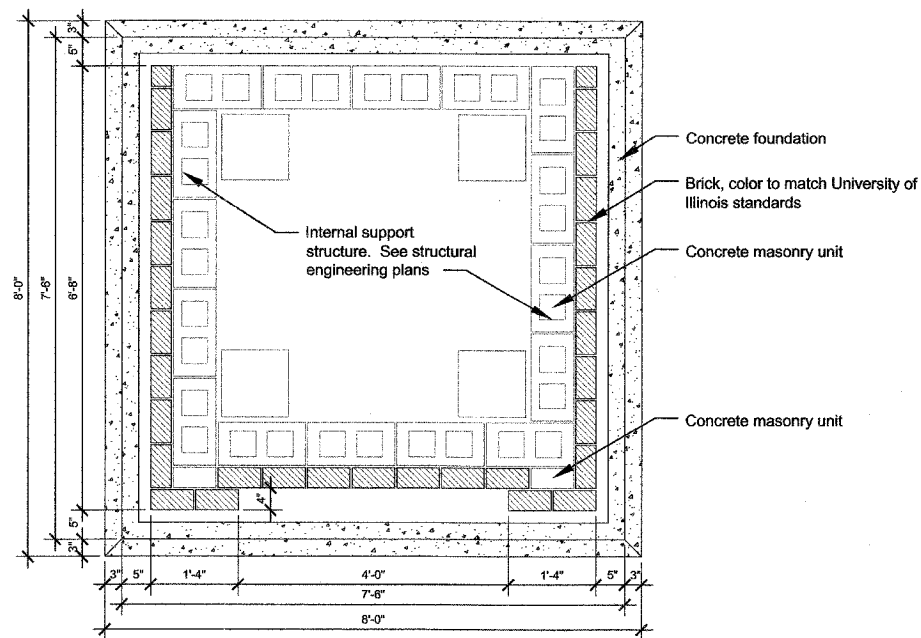


**D** Precast Cap 3 d-precast panel C  
3/4" = 1'-0"

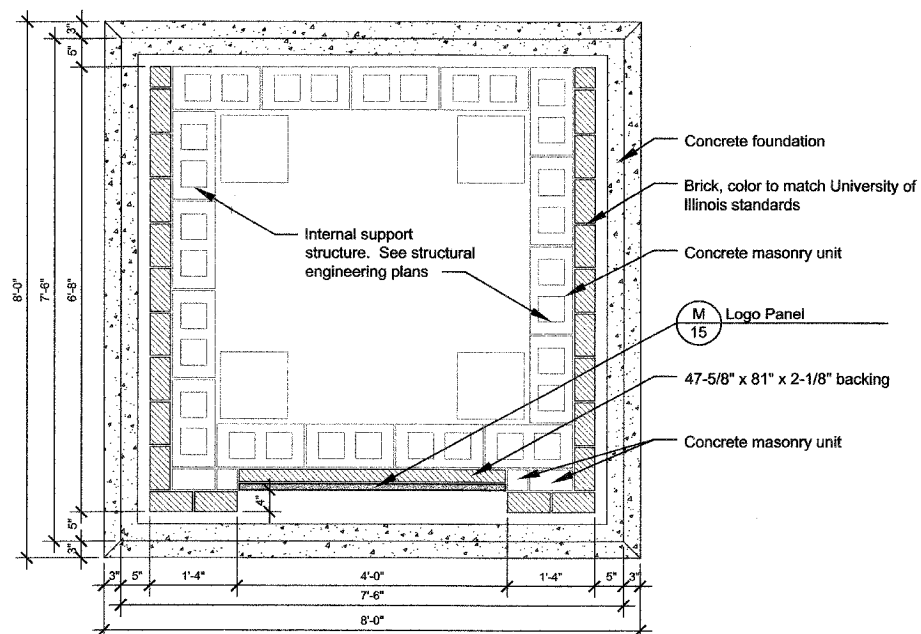
REVISIONS	
NAME	DATE



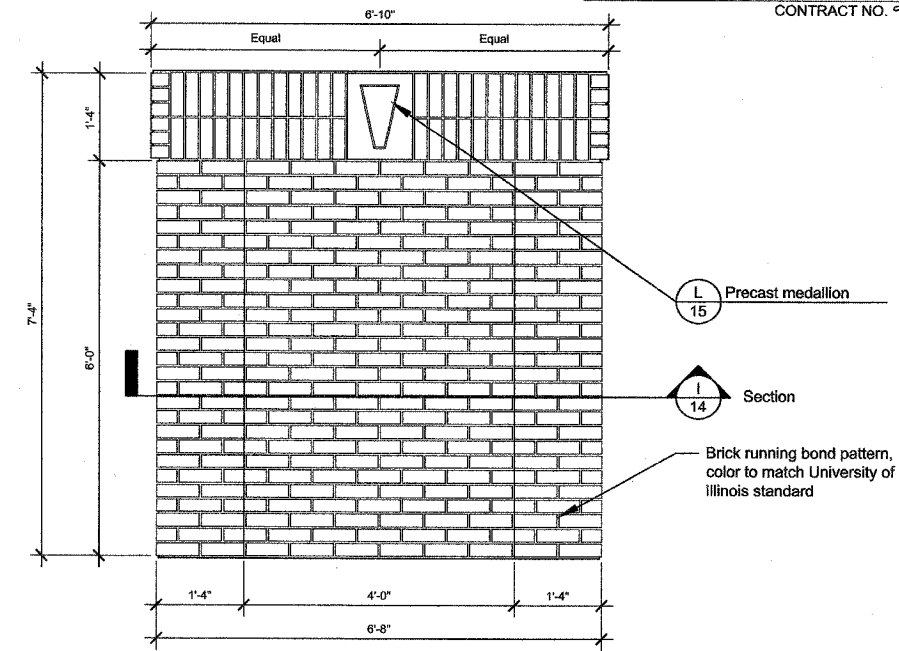
**E** Large Masonry Column Elevation d-lgcol-ctr  
3/4" = 1'-0"



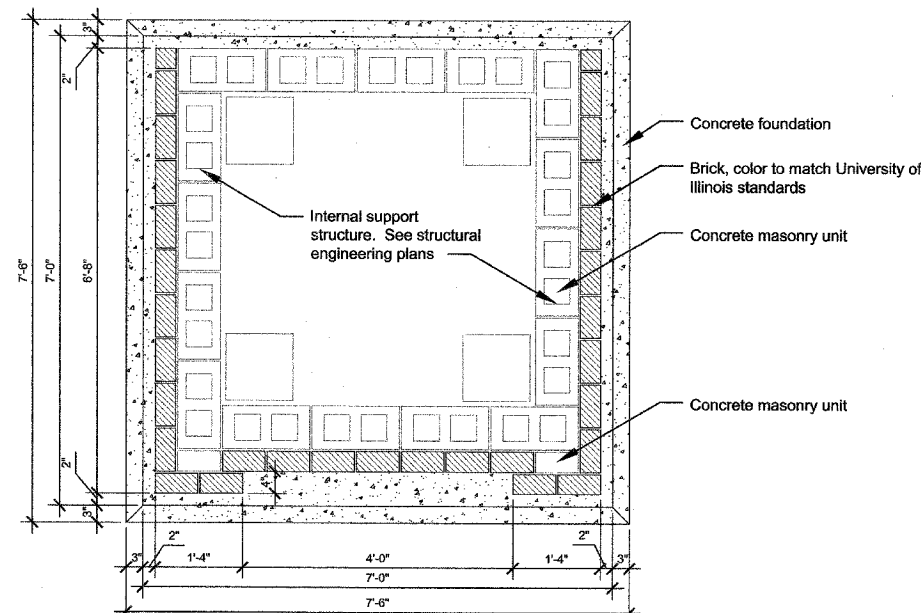
**F** Large Column- Plan View Section d-largecolumn-plan  
3/4" = 1'-0"



**G** Large Column w/ Logo- Plan View Section d-largecolumn-plan-logo  
3/4" = 1'-0"

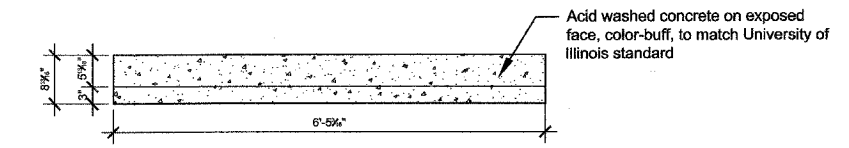


**H** Small Masonry Column Elevation d-scol-ctr  
3/4" = 1'-0"

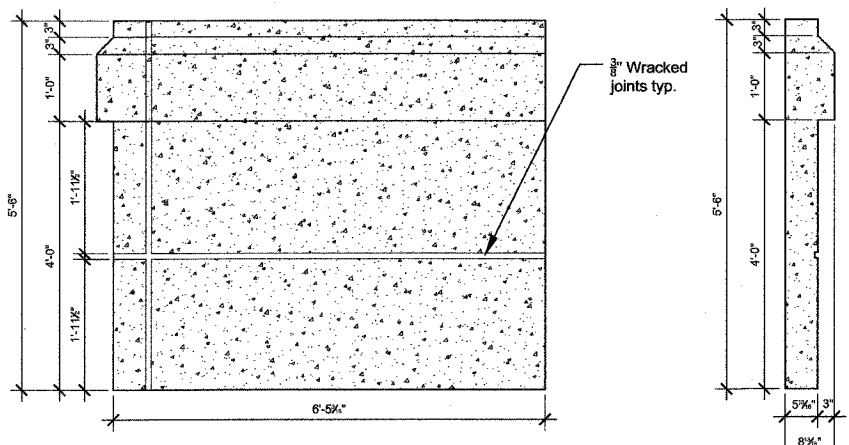


**I** Small Column- Plan View Section d-smallcolumn-plan  
3/4" = 1'-0"

REVISIONS		ILLINOIS DEPARTMENT OF TRANSPORTATION
NAME	DATE	
		<b>COLUMN DETAILS</b>  SCALE: <span style="float: right;">DRAWN BY: JMN</span> DATE 08/15/07 <span style="float: right;">CHECKED BY: MEU</span>



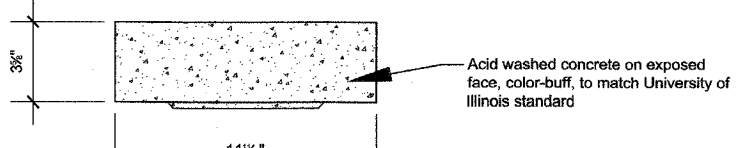
Top



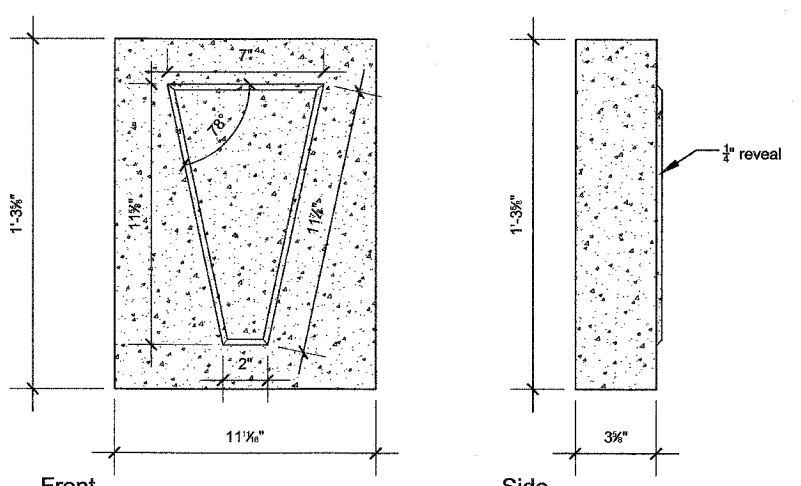
Front

Side

**J** Precast Base 4 d-precast panel D  
3/4" = 1'-0"



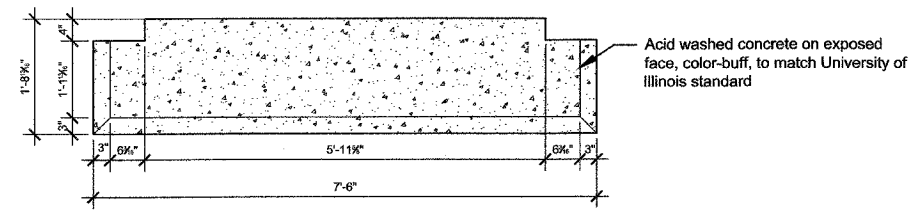
Top



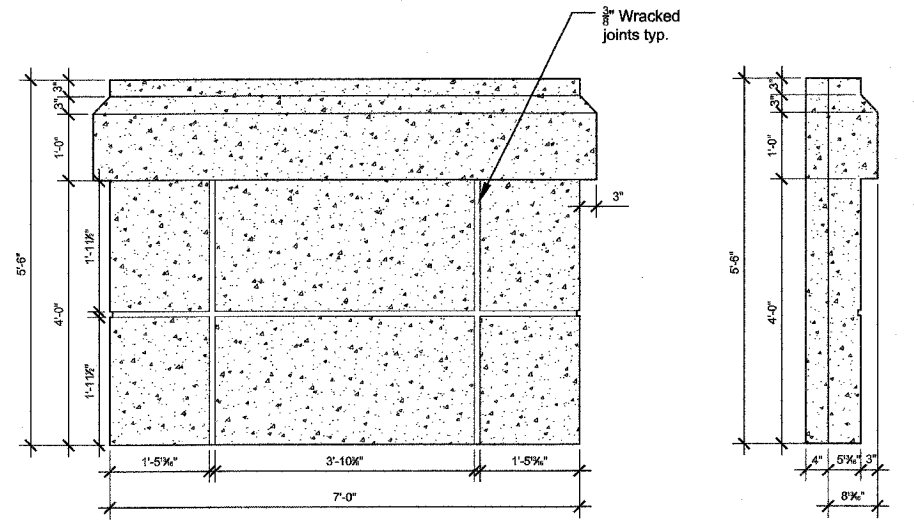
Front

Side

**L** Precast Medallion d-precast medallion  
3" = 1'-0"



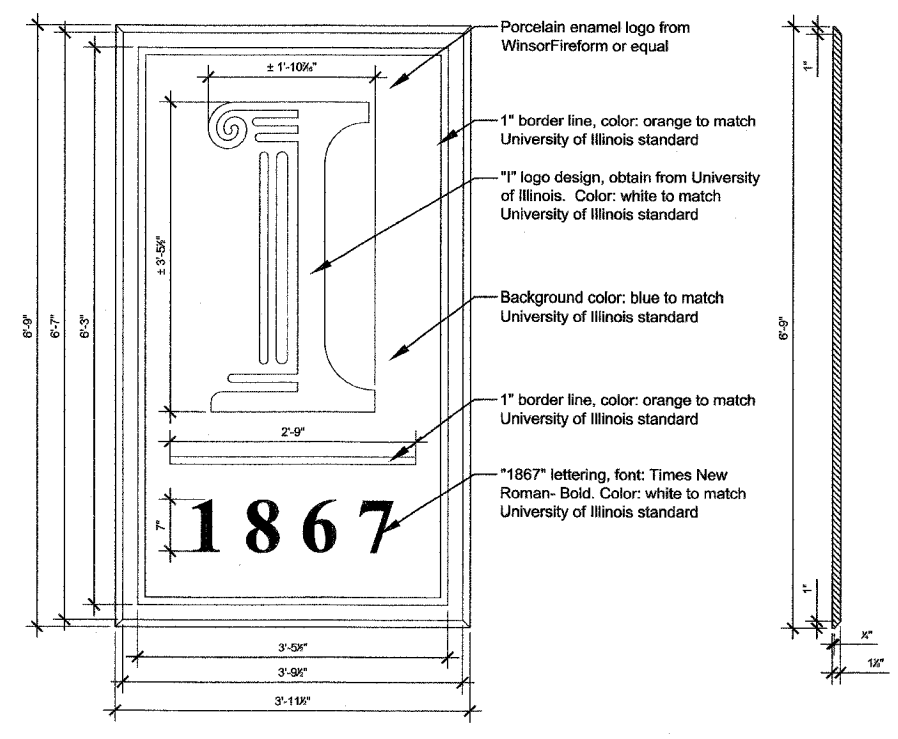
Top



Front

Side

**K** Precast Base 5 d-precast panel E  
3/4" = 1'-0"



Front

Side

**M** Logo Panel d-logo panel  
1" = 1'-0"

REVISIONS	
NAME	DATE

ILLINOIS DEPARTMENT OF TRANSPORTATION

**COLUMN DETAILS**

SCALE: DRAWN BY: JMN

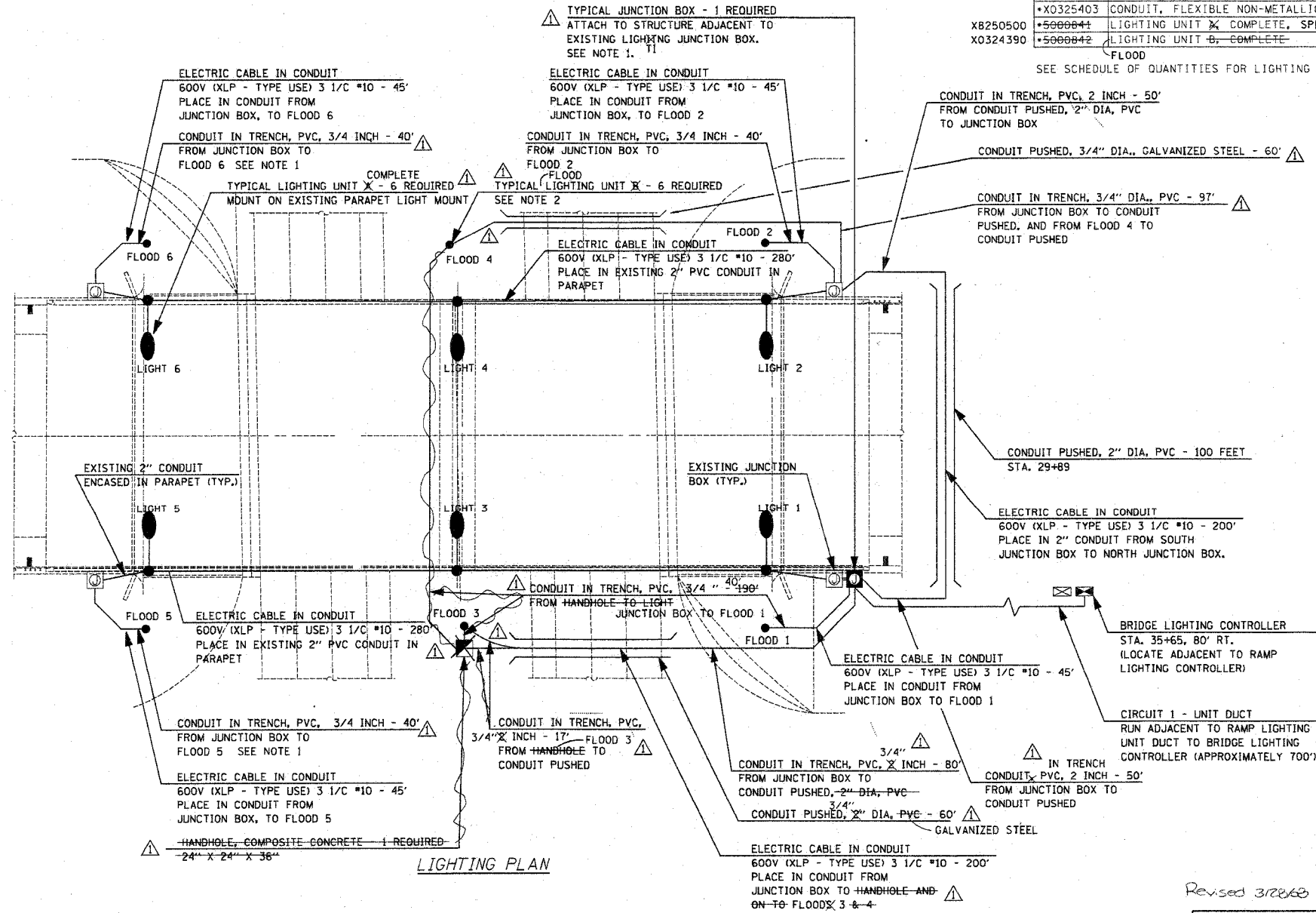
DATE: 06/15/07 CHECKED BY: MEU

BRIDGE LIGHTING BILL OF MATERIALS

CODE NO.	DESCRIPTION	UNIT	QUANTITY
8040010X	ELECTRIC SERVICE INSTALLATION, SPECIAL	EACH	LUMP-SUM 1
81012200	CONDUIT IN TRENCH, 3/4" DIA., PVC	FOOT	317-354
81012600	CONDUIT IN TRENCH, 2" DIA., PVC	FOOT	205-108
81018100	CONDUIT PUSHED, 3/4" DIA., GALVANIZED STEEL	FOOT	120
81021330	CONDUIT PUSHED, 2" DIA., PVC	FOOT	+60-100
81300800	JUNCTION BOX, SS, ATTACH TO STRUCT., 18" X 12" X 6"	EACH	1
81400730	HANDHOLE, COMPOSITE CONCRETE	EACH	1
81603035	UNIT DUCT, 600V, 2-1C NO. 6, 1/C NO. 6 GROUND (XLP-TYPE USE), 1" DIA., POLYETHYLENE	FOOT	700
81702450	ELEC. CABLE IN CONDUIT, 600V (XLP-TYPE USE) 3 1/C X 10	FOOT	+252-1254
81900200	TRENCH AND BACKFILL FOR ELECTRICAL WORK	FOOT	+171-1161
82500510	LIGHTING CONTROLLER TYPE CB-RCS 60 AMP 240 VOLT	EACH	1
*X0325403	CONDUIT, FLEXIBLE NON-METALLIC, WEATHERPROOF, 2"	EACH	4
*5000041	LIGHTING UNIT X COMPLETE, SPECIAL	EACH	6
*5000042	LIGHTING UNIT B, COMPLETE	EACH	6

F.A. RTE.	SECTION	COUNTY	TOTAL SHEETS	SHEET NO.
I-57	00-00374-03-LS	CHAMPAIGN	21	16
STA. TO STA.				
FED. ROAD DIST. NO. ILLINOIS FED. AID PROJECT				
CONTRACT NO. 91382				

XB250500  
X0324390  
SEE SCHEDULE OF QUANTITIES FOR LIGHTING SCHEDULE



- NOTES:
- BRING CIRCUITS UP INTO JUNCTION/BOX THROUGH RIGID CONDUIT IN TRENCH. CONNECT CONDUITS TO JUNCTION BOX WITH LIQUID TIGHT FLEXIBLE CONDUIT (8" MAX LENGTH) TO ACCOMMODATE MOVEMENT OF PARAPET WALL WITH RESPECT TO THE CONDUIT PENETRATING THE GROUND. CONNECT JUNCTION BOXES TOGETHER WITH 2-2" NIPPLES.
  - COORDINATE FINAL FIXTURE LOCATION AND AIMING WITH ENGINEER IN THE FIELD. FLOODS 3 & 4 AND ASSOCIATED HANDHOLES SHALL BE OFFSET 3' FROM COLUMN CENTERLINE TO BE OUT OF DITCH FLOWLINE. 100W LAMPS FOR FLOODS 1, 2, 5, & 6 SHALL BE 70W M.H. LAMPS FOR FLOODS 3 & 4 SHALL BE 100W M.H.

REVISIONS	
NAME	DATE
RLH	3/18/08

ILLINOIS DEPARTMENT OF TRANSPORTATION  
**LIGHTING PLAN**  
SCALE: As Noted  
DATE: 01/04/08  
DRAWN BY: RS  
CHECKED BY: MTP

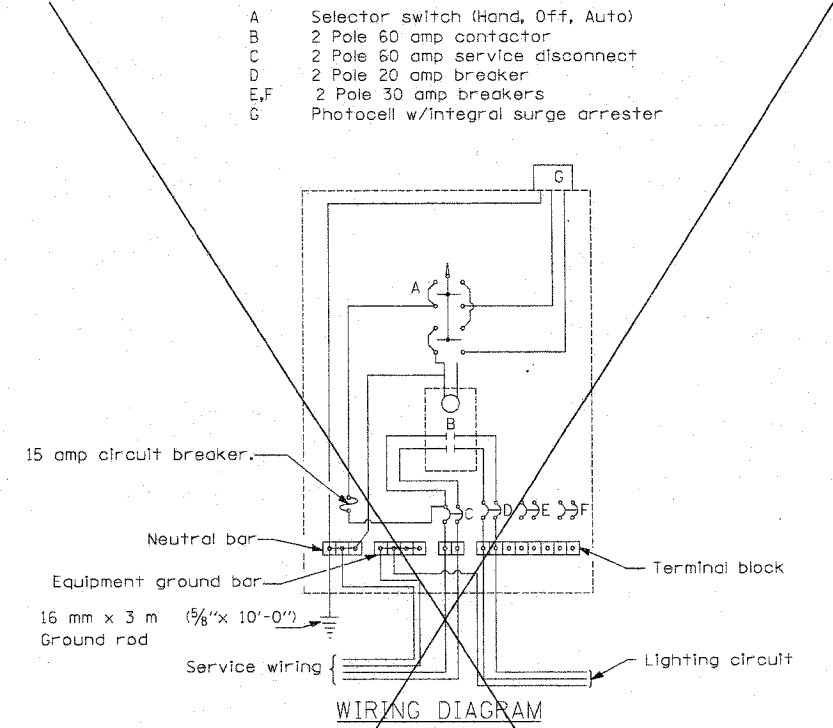
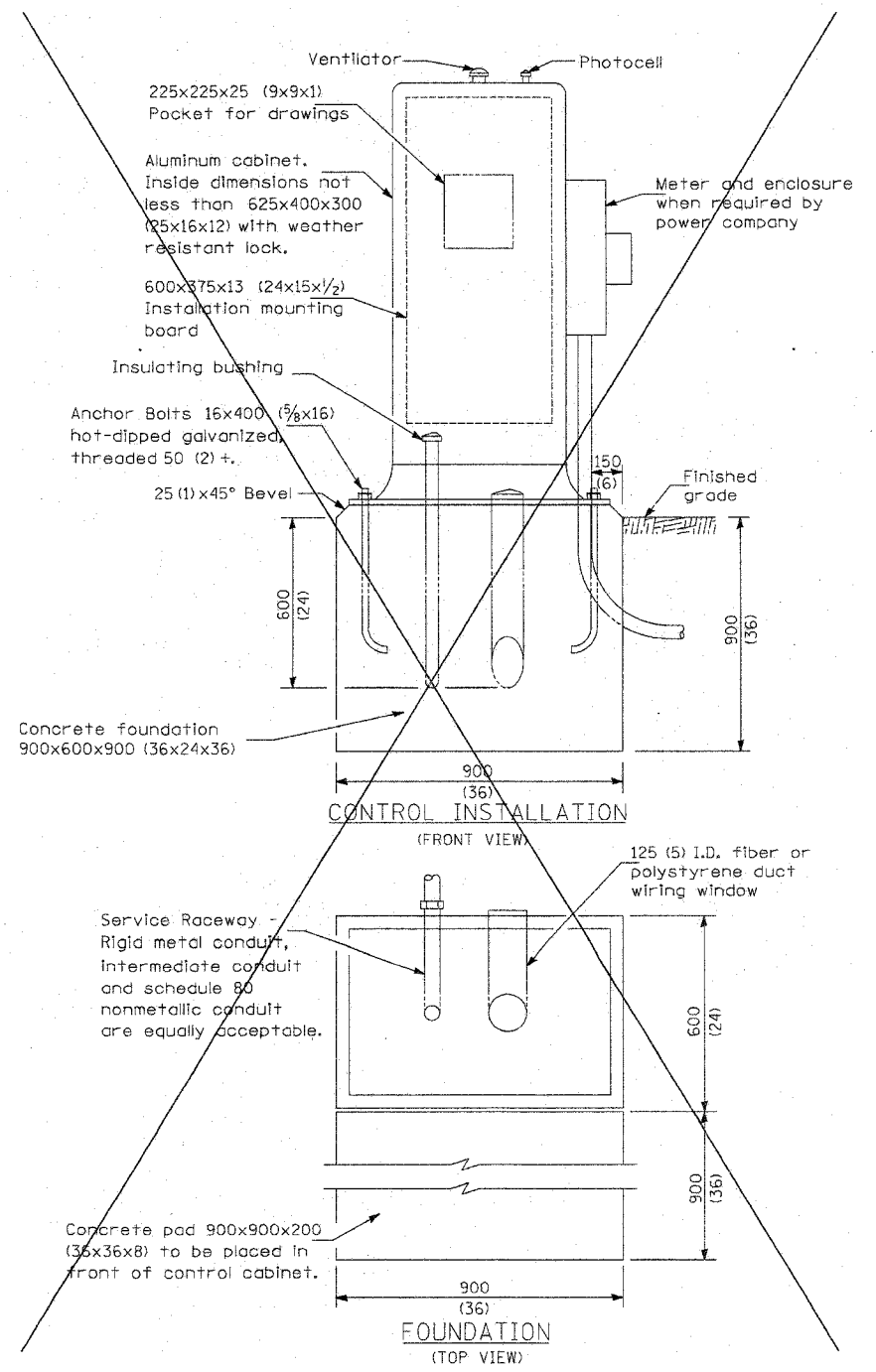
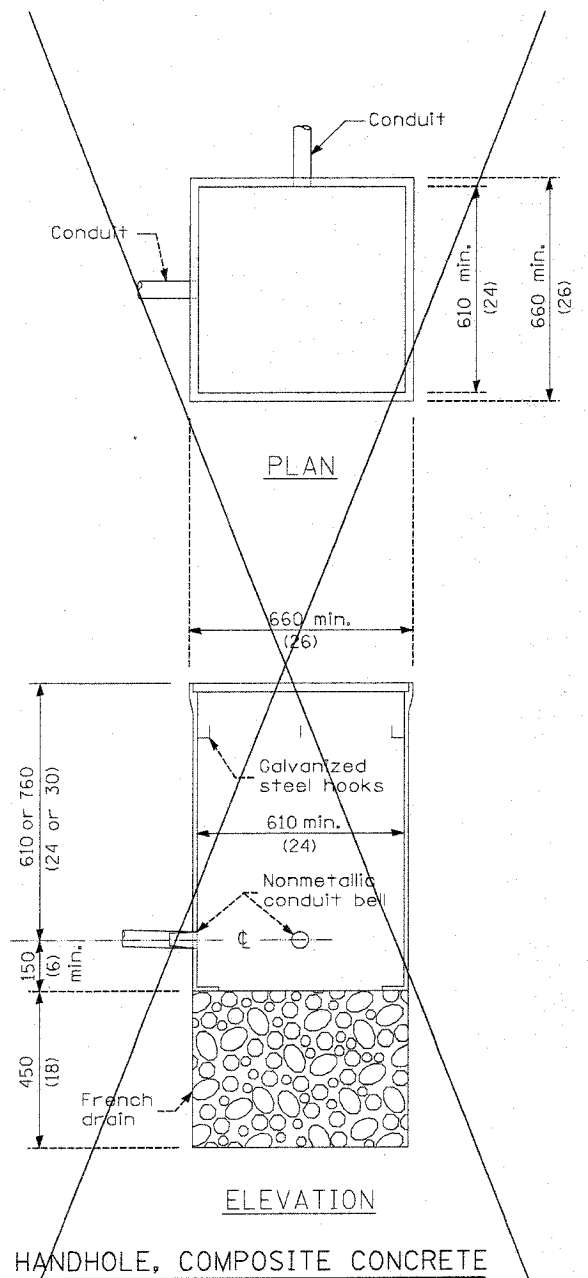
Revised 3/26/08

DESIGN FIRM REGISTRATION NO. 184-000480  
118 SOUTH CLINTON STREET  
SUITE 600  
CHICAGO, IL 60661  
PHONE : 312.646.0900  
FAX : 312.646.0204

ps:\p01358\plans\Lighting\Lighting-Bill.mxd  
3/24/2008



F.A. RTE.	SECTION	COUNTY	TOTAL SHEETS	SHEET NO.
1-57	00-00374-03-LS	CHAMPAIGN	21	17
STA.		TO STA.		
FED. ROAD DIST. NO.		ILLINOIS FED. AID PROJECT		
CONTRACT NO. 91382				



- A Selector switch (Hand, Off, Auto)
- B 2 Pole 60 amp contactor
- C 2 Pole 60 amp service disconnect
- D 2 Pole 20 amp breaker
- E,F 2 Pole 30 amp breakers
- G Photocell w/integral surge arrester

**GENERAL NOTES**

Locate service pole and control installation adjacent to R.O.W. line with a minimum distance of 9 m (30') from the edge of pavement. Exact location shall be established by the Engineer.

The underground service entrance wiring shall not exceed 46 m (150'). Total aerial and underground service between the control installation and primary transformer shall not exceed 76 m (250').

Raceways shall terminate 75 (3) above top of concrete foundation.

For 480 V. systems, a 480/120 V. control transformer will be required.

All dimensions are in millimeters unless otherwise shown.

- 240 V. SERVICE
- 480 V. SERVICE

P:\A\01809\plans\sheds\Lighting\_Sheets.dgn 3/24/2008

Revised 3/28/08

**Clampitz ENGINEERS**

DESIGN FIRM REGISTRATION No. 184-000400  
119 SOUTH CLINTON STREET SUITE 600 CHICAGO, IL 60661  
PHONE : 312.848.9900 FAX : 312.848.0204

REVISIONS	
NAME	DATE
RLH	3/18/08

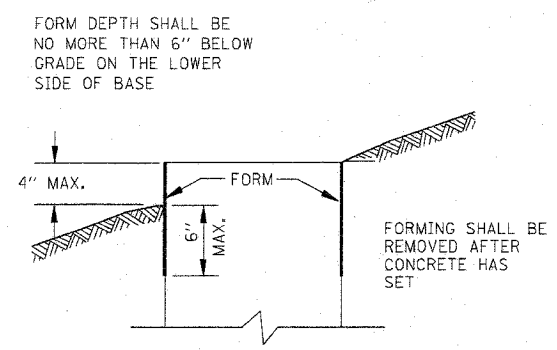
ILLINOIS DEPARTMENT OF TRANSPORTATION

**LIGHTING DETAILS**

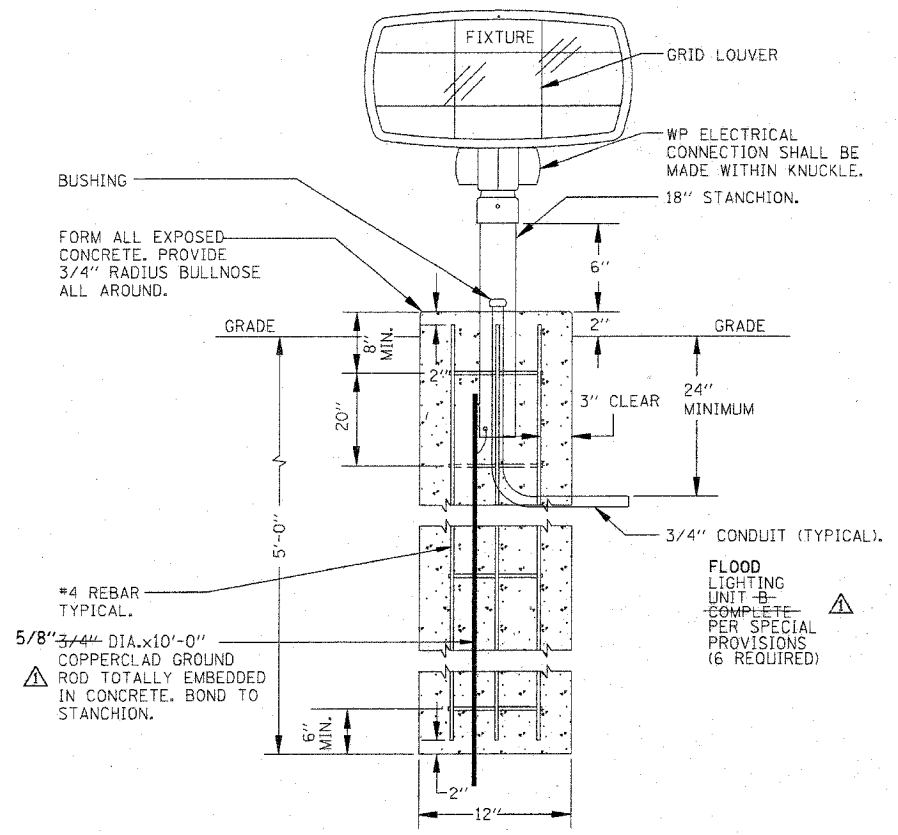
SCALE: As Noted  
DATE: 01/04/08

DRAWN BY: RS  
CHECKED BY: MTP

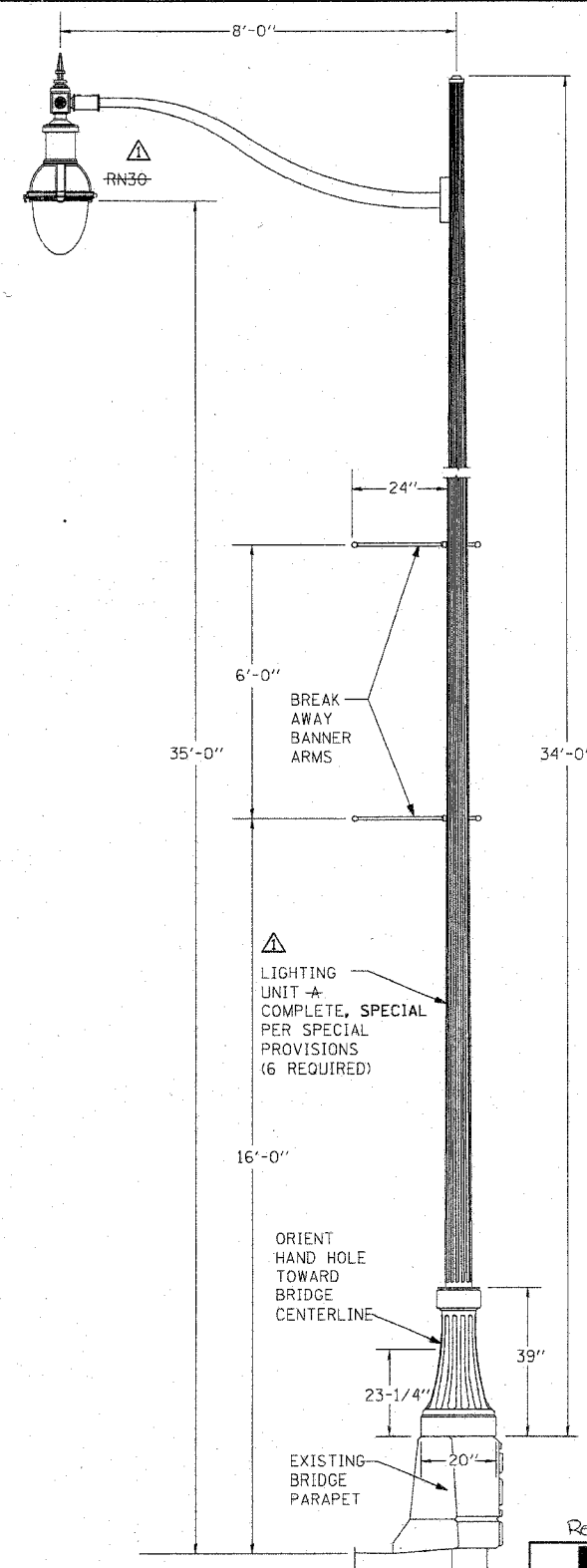
F.A. RT#	SECTION	COUNTY	TOTAL SHEETS	SHEET NO.
I-57	DD-00374-03-LS	CHAMPAIGN	21	18
STA.	TO STA.			
FED. ROAD DIST. NO.	ILLINOIS FED. AID PROJECT			
CONTRACT NO. 91382				



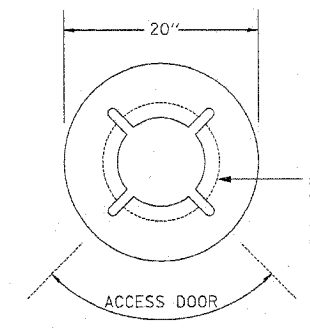
FORMING DETAIL



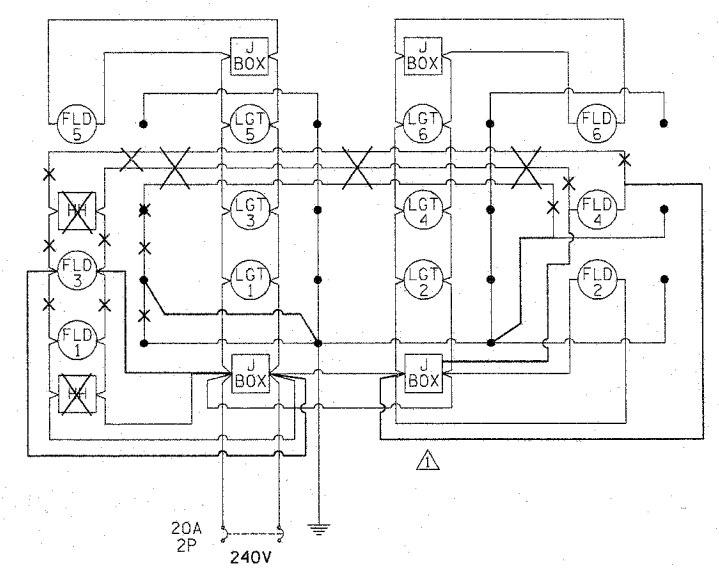
△ LIGHTING UNIT FLOOD LIGHT UNIT B, COMPLETE



△ LIGHT UNIT A COMPLETE, SPECIAL



BASE ORIENTATION DIAGRAM



NOTES: △  
 PROVIDE CIRCUITING PER PLAN.  
 TWO POLE AND SURGE PROTECTOR  
 PROVIDE TWIN FUSE HOLDER IN EACH POLE BASE.  
 PROVIDE FUSES PER MANUFACTURER'S RECOMMENDATIONS.  
 THE STANDARD SPECIFICATIONS

P:\100\1009\plans\sheet\Lighting\_Sheets.dwg  
 3/27/2008

Revised 3/28/08  
**Clampett**  
 ENGINEERS  
 DESIGN FIRM REGISTRATION  
 No. 184-000450  
 118 SOUTH CLINTON STREET  
 SUITE 600  
 CHICAGO, IL 60681  
 PHONE : 312.648.1800  
 FAX : 312.648.0204

REVISIONS	
NAME	DATE
RLH	3/18/08

ILLINOIS DEPARTMENT OF TRANSPORTATION  
**LIGHTING DETAILS**  
 SCALE: As Noted  
 DATE: 01/04/08  
 DRAWN BY: RS  
 CHECKED BY: MTP


### SCHEDULES OF QUANTITIES

#### LIGHTING SCHEDULE

LOCATION	LIGHTING UNIT - COMPLETE, SPECIAL X8250500 (EACH)	FLOOD LIGHTING UNIT B - COMPLETE X0324390 (EACH)	CONDUIT, FLEX. NON-METALLIC, WEATHERPRF, 2" (EACH)	CONDUIT IN TRENCH, 3/4" DIA. PVC (FOOT)	CONDUIT IN TRENCH, 2" DIA. PVC (FOOT)	CONDUIT PUSHED, 2" DIA. PVC (FOOT)	CONDUIT PUSHED, 3/4" DIA. GALVANIZED STEEL (FOOT)	JUNCTION BOX, 18" X 12" X 6" (EACH)	HANDHOLE, COMPOSITE CONCRETE (EACH)	TRENCH AND BACKFILL FOR ELECTRICAL WORK (FOOT)	UNIT DUCT (FOOT)	ELEC. CABLE IN CONDUIT, 600V (XLP-TYPE USE) 3 1/2" X 10 NO. (FOOT)	ELEC. SERVICE INSTALLATION, SPECIAL (EACH)	LIGHTING CONTROLLER TYPE CB-RCS 60 AMP - 240 VOLT (EACH)
CURTIS 29+25RT	1	1												
CURTIS 29+25LT	1	1												
CURTIS 28+20RT	1	1		2.0					1					
CURTIS 28+20LT	1	1												
CURTIS 27+15RT	1	1												
CURTIS 27+15LT	1	1												
CURTIS 29+53LT			1		8.0					8.0				
CURTIS 29+53RT			1					1						
CURTIS 26+87LT			1											
CURTIS 26+87RT			1											
CURTIS 29+89LT TO 29+89RT						100.0						100.0		
CURTIS 29+53RT TO 29+89RT					50.0					50.0		50.0		
CURTIS 29+53LT TO 29+89LT					50.0					50.0		50.0		
CURTIS 29+53RT TO 35+60RT										700.0	700.0			
CURTIS 29+53RT TO 26+87RT												280.0		
CURTIS 29+53LT TO 26+87LT												280.0		
CURTIS 29+53RT TO 29+25RT				40.0						40.0		45.0		
CURTIS 29+53LT TO 29+25LT				<del>50.0</del> 40.0						<del>50.0</del> 40.0		45.0		
CURTIS 26+87RT TO 27+15RT				40.0						40.0		45.0		
CURTIS 26+87LT TO 27+15LT				40.0						40.0		45.0		
CURTIS 29+53RT TO 28+96RT				80.0	<del>80.0</del>					80.0		72.0		
CURTIS 28+96RT TO 28+36RT						<del>60.0</del>	60.0					60.0		
CURTIS 28+36RT TO 28+20RT				17.0	<del>17.0</del>					<del>16.0</del> 17.0		20.0		
CURTIS 28+20RT TO 28+20LT				<del>145.0</del>						<del>145.0</del>		<del>150.0</del>		
CURTIS 35+65RT													1	1
CURTIS 28+20LT TO 29+25LT				97.0						97.0		102.0		
CURTIS 28+96LT TO 28+36LT							60.0					60.0		
<b>TOTALS</b>	<b>6</b>	<b>6</b>	<b>4</b>	<b>354.0</b>	<b>108.0</b>	<b>100.0</b>	<b>120.0</b>	<b>1</b>	<b>1</b>	<b>1161.0</b>	<b>700.0</b>	<b>1254.0</b>	<b>1</b>	<b>1</b>
UNIT (EACH)	(EACH)	(EACH)	(EACH)	(FOOT)	(FOOT)	(FOOT)	(FOOT)	(EACH)	(EACH)	(FOOT)	(FOOT)	(FOOT)	(EACH)	(EACH)
PAY ITEM	X8250500	X0324390	X0325403	81012200	81012600	81021330	81018100	81300800	81400730	81900200	81603035	81702450	80400105	82500510

D:\V08\3856\plans\sheet\Lighting\_Sheets.dgn 3/27/08

Revised 3/28/08



DESIGN FIRM REGISTRATION No. 184-000450  
118 SOUTH CLINTON STREET SUITE 600 CHICAGO, IL 60661  
PHONE : 312.648.0800 FAX : 312.648.0804

REVISIONS	
NAME	DATE
RLH	3/18/08

ILLINOIS DEPARTMENT OF TRANSPORTATION

### LIGHTING SCHEDULE OF QUANTITIES

SCALE: As Noted      DRAWN BY: RS  
DATE: 01/04/08      CHECKED BY: MTP

**Illinois Department of Transportation**  
Division of Highways  
District 5, Metropolis

**SOIL BORING LOG** Page 1 of 2  
Date 6/6/02

ROUTE FAI Rt. 57 DESCRIPTION I-57/Curtis Road Interchange LOGGED BY CNA

SECTION 10-32HB-3-K LOCATION SW, SEC. 33, TWP. 19N, R1G. 8E, 3rd PM

COUNTY Champaign DRILLING METHOD Hollow Stem Auger HAMMER TYPE Automatic

STRUCT. NO. 010-0272 (Prop.)  
Station \_\_\_\_\_  
BORING NO. B11A, W. Abut.  
Station 297+70  
Offset 130.0 ft LL  
Ground Surface Elev. 696.5 ft (R) (6") (tsf) (%)

Soil Description	Depth (ft)	Blow Count (6")	Penetration (tsf)	Penetration (%)
Black Silty Clay (Top Soil)				
Gray Clay Loam Till (continued)				
Gray/Brown Mottled Silty Clay Loam	1	1.3	27	
	2	1.3	21	
Gray/Brown Mixed Medium Sand	1	1.4	12	
Gray Clay Loam Till	1	4.3	10	
Brown Medium Sand	5	5.0	11	
Gray Clay Loam Till	1	5.2	10	
	6	4.7	10	
	12	4.3	14	
	20	4.3	14	

An assumed centerline elevation of 100.00 and station of 10+00 is used when this information is not available.  
The Unconfined Compressive Strength (UCS) Failure Mode is indicated by (B-Bulge, S-Shear, P-Penetrometer)  
The SPT (N Value) is the sum of the last two blow values in each sampling zone (AASHTO T208)

BBS, form 137 (Rev. 8-99)

**Illinois Department of Transportation**  
Division of Highways  
District 5, Metropolis

**SOIL BORING LOG** Page 2 of 2  
Date 6/6/02

ROUTE FAI Rt. 57 DESCRIPTION I-57/Curtis Road Interchange LOGGED BY CNA

SECTION 10-32HB-3-K LOCATION SW, SEC. 33, TWP. 19N, R1G. 8E, 3rd PM

COUNTY Champaign DRILLING METHOD Hollow Stem Auger HAMMER TYPE Automatic

STRUCT. NO. 010-0272 (Prop.)  
Station \_\_\_\_\_  
BORING NO. B11A, W. Abut.  
Station 297+70  
Offset 130.0 ft LL  
Ground Surface Elev. 696.5 ft (R) (6") (tsf) (%)

Soil Description	Depth (ft)	Blow Count (6")	Penetration (tsf)	Penetration (%)
Gray Clay Loam Till (continued)				
	2	5.1	12	
	4	4.3	11	
	8	4.3	11	
	10	4.3	11	
End of Boring	646.5	-50		

An assumed centerline elevation of 100.00 and station of 10+00 is used when this information is not available.  
The Unconfined Compressive Strength (UCS) Failure Mode is indicated by (B-Bulge, S-Shear, P-Penetrometer)  
The SPT (N Value) is the sum of the last two blow values in each sampling zone (AASHTO T208)

BBS, form 137 (Rev. 8-99)

**Illinois Department of Transportation**  
Division of Highways  
District 5, Metropolis

**SOIL BORING LOG** Page 1 of 3  
Date 6/6/02

ROUTE FAI Rt. 57 DESCRIPTION I-57/Curtis Road Interchange LOGGED BY CNA

SECTION 10-32HB-3-K LOCATION SW, SEC. 33, TWP. 19N, R1G. 8E, 3rd PM

COUNTY Champaign DRILLING METHOD Hollow Stem Auger HAMMER TYPE Automatic

STRUCT. NO. 010-0272 (Prop.)  
Station \_\_\_\_\_  
BORING NO. B12, Mid. Pier  
Station 297+70  
Offset 0.0 ft LL  
Ground Surface Elev. 697.0 ft (R) (6") (tsf) (%)

Soil Description	Depth (ft)	Blow Count (6")	Penetration (tsf)	Penetration (%)
Black Silty Clay (Topsoil - Soft)				
Brown Dirty Coarse Sand	1	0.6	28	
	5	1.0	13	
Brown Mottled Clay Loam (Weathered Till)				
Gray Gravelly Clay Loam Till	2	1.0	13	
	5	1.0	13	
Gray Clay Loam Till	8	4.1	12	
	10	4.1	12	
	16	3.7	11	
	17	3.7	11	
	18	5.0	11	
	20	5.0	11	

An assumed centerline elevation of 100.00 and station of 10+00 is used when this information is not available.  
The Unconfined Compressive Strength (UCS) Failure Mode is indicated by (B-Bulge, S-Shear, P-Penetrometer)  
The SPT (N Value) is the sum of the last two blow values in each sampling zone (AASHTO T208)

BBS, form 137 (Rev. 8-99)

**Illinois Department of Transportation**  
Division of Highways  
District 5, Metropolis

**SOIL BORING LOG** Page 2 of 3  
Date 6/6/02

ROUTE FAI Rt. 57 DESCRIPTION I-57/Curtis Road Interchange LOGGED BY CNA

SECTION 10-32HB-3-K LOCATION SW, SEC. 33, TWP. 19N, R1G. 8E, 3rd PM

COUNTY Champaign DRILLING METHOD Hollow Stem Auger HAMMER TYPE Automatic

STRUCT. NO. 010-0272 (Prop.)  
Station \_\_\_\_\_  
BORING NO. B12, Mid. Pier  
Station 297+70  
Offset 0.0 ft LL  
Ground Surface Elev. 697.0 ft (R) (6") (tsf) (%)

Soil Description	Depth (ft)	Blow Count (6")	Penetration (tsf)	Penetration (%)
Gray Clay Loam Till (continued)				
Gray Sand Loam Till				
	0	4.7	12	
	7	4.7	12	
	11	4.7	12	
	13	5.4	10	
	12	5.0	10	
	15	5.0	10	
	16	5.0	10	
	17	5.0	10	
	18	5.0	10	
	19	5.0	10	
	20	5.0	10	

An assumed centerline elevation of 100.00 and station of 10+00 is used when this information is not available.  
The Unconfined Compressive Strength (UCS) Failure Mode is indicated by (B-Bulge, S-Shear, P-Penetrometer)  
The SPT (N Value) is the sum of the last two blow values in each sampling zone (AASHTO T208)

BBS, form 137 (Rev. 8-99)

**Illinois Department of Transportation**  
Division of Highways  
District 5, Metropolis

**SOIL BORING LOG** Page 3 of 3  
Date 6/6/02

ROUTE FAI Rt. 57 DESCRIPTION I-57/Curtis Road Interchange LOGGED BY CNA

SECTION 10-32HB-3-K LOCATION SW, SEC. 33, TWP. 19N, R1G. 8E, 3rd PM

COUNTY Champaign DRILLING METHOD Hollow Stem Auger HAMMER TYPE Automatic

STRUCT. NO. 010-0272 (Prop.)  
Station \_\_\_\_\_  
BORING NO. B12, Mid. Pier  
Station 297+70  
Offset 0.0 ft LL  
Ground Surface Elev. 697.0 ft (R) (6") (tsf) (%)

Soil Description	Depth (ft)	Blow Count (6")	Penetration (tsf)	Penetration (%)
Gray Sand Loam Till (continued)				
	10	3.6	7	
	15	3.6	7	
	25	3.6	7	
End of Boring	672.0	-88		

An assumed centerline elevation of 100.00 and station of 10+00 is used when this information is not available.  
The Unconfined Compressive Strength (UCS) Failure Mode is indicated by (B-Bulge, S-Shear, P-Penetrometer)  
The SPT (N Value) is the sum of the last two blow values in each sampling zone (AASHTO T208)

BBS, form 137 (Rev. 8-99)

DESIGNED SLD  
CHECKED SMM  
DRAWN SLD  
CHECKED SMM

**SOIL BORINGS**  
**CURTIS ROAD BRIDGE ENHANCEMENTS**  
**CHAMPAIGN COUNTY**  
**STATION 297+20.45**

DESIGN FIRM REGISTRATION  
No. 184-000450  
1817 SOUTH NEIL STREET  
SUITE 100  
CHAMPAIGN, IL 61820  
PHONE : 217.373.8900  
FAX : 217.373.8923

**Clark Dietz**  
ENGINEERS

**Illinois Department of Transportation**  
Division of Highways  
District 5 Materials

### SOIL BORING LOG

Page 1 of 3 Date 6/02

ROUTE FAI Rl. 57 DESCRIPTION I-57 Curtis Road Interchange LOGGED BY CNA  
SECTION 10-32HB-3.K LOCATION SE, SEC. 33, TWP. 19N, RNG. 8E, 3rd PM  
COUNTY Champaign DRILLING METHOD Hollow Stem Auger HAMMER TYPE Automatic

STRUCT. NO. 010-0272 (Prop.) Station 297+70  
BORING NO. B13 E. Abut. Station 297+70 Offset 85.0 ft RL  
Ground Surface Elev. 698.0 ft (R) (6") (tsf) (%)

DEPTH (ft)	SOIL DESCRIPTION	U	M	Surface Water Elev. (ft)	D	B	U	M
		(tsf)	(%)		(ft)	(Bulge)	(Shear)	(Penetrometer)
0	Black/Grey Silty Clay (Topsoil)							
1	Gray Silty Clay Loam Till (continued)			676.0				
2	Gray Clay Loam Till with Interbedded Silt & Sand Seams							
3		2						
4		4	2.4	12				
5		8						
6		12						
7		16						
8		20						
9		24						
10		28						
11		32						
12		36						
13		40						
14		44						
15		48						
16		52						
17		56						
18		60						
19		64						
20		68						
21		72						
22		76						
23		80						
24		84						
25		88						
26		92						
27		96						
28		100						

7/16/2005 8:06:33 AM S:\SOILS\BORING LOGS\CHAMPAIGN CNTY\CURTIS RD MAY 2005.GPJ

An assumed centerline elevation of 100.00 and station of 10+00 is used when this information is not available.  
The Unconfined Compressive Strength (UCS) Failure Mode is indicated by (B-Bulge, S-Shear, P-Penetrometer)  
The SPT (N Value) is the sum of the last two blow values in each sampling zone (AASHTO T206)

BBS, form 137 (Rev. 8-99)

**Illinois Department of Transportation**  
Division of Highways  
District 5 Materials

### SOIL BORING LOG

Page 2 of 3 Date 6/02

ROUTE FAI Rl. 57 DESCRIPTION I-57 Curtis Road Interchange LOGGED BY CNA  
SECTION 10-32HB-3.K LOCATION SE, SEC. 33, TWP. 19N, RNG. 8E, 3rd PM  
COUNTY Champaign DRILLING METHOD Hollow Stem Auger HAMMER TYPE Automatic

STRUCT. NO. 010-0272 (Prop.) Station 297+70  
BORING NO. B13 E. Abut. Station 297+70 Offset 85.0 ft RL  
Ground Surface Elev. 698.0 ft (R) (6") (tsf) (%)

DEPTH (ft)	SOIL DESCRIPTION	U	M	Surface Water Elev. (ft)	D	B	U	M
		(tsf)	(%)		(ft)	(Bulge)	(Shear)	(Penetrometer)
0	Gray Clay Loam Till with Interbedded Silt & Sand Seams (continued)							
1	Gray Clay Loam Till with Interbedded Silt & Sand Seams (continued)							
2	Gray Dirty Very Coarse Angular Sand with Small Seams of Gray Sand Loam Till							
3		2						
4		4	4.7	12				
5		8						
6		12						
7		16						
8		20						
9		24						
10		28						
11		32						
12		36						
13		40						
14		44						
15		48						
16		52						
17		56						
18		60						
19		64						
20		68						
21		72						
22		76						
23		80						
24		84						
25		88						
26		92						
27		96						
28		100						

7/16/2005 8:06:33 AM S:\SOILS\BORING LOGS\CHAMPAIGN CNTY\CURTIS RD MAY 2005.GPJ

(Boring Extended Below 55' on May 5, 2005)

An assumed centerline elevation of 100.00 and station of 10+00 is used when this information is not available.  
The Unconfined Compressive Strength (UCS) Failure Mode is indicated by (B-Bulge, S-Shear, P-Penetrometer)  
The SPT (N Value) is the sum of the last two blow values in each sampling zone (AASHTO T206)

BBS, form 137 (Rev. 8-99)

**Illinois Department of Transportation**  
Division of Highways  
District 5 Materials

### SOIL BORING LOG

Page 3 of 3 Date 6/02

ROUTE FAI Rl. 57 DESCRIPTION I-57 Curtis Road Interchange LOGGED BY CNA  
SECTION 10-32HB-3.K LOCATION SE, SEC. 33, TWP. 19N, RNG. 8E, 3rd PM  
COUNTY Champaign DRILLING METHOD Hollow Stem Auger HAMMER TYPE Automatic

STRUCT. NO. 010-0272 (Prop.) Station 297+70  
BORING NO. B13 E. Abut. Station 297+70 Offset 85.0 ft RL  
Ground Surface Elev. 698.0 ft (R) (6") (tsf) (%)

DEPTH (ft)	SOIL DESCRIPTION	U	M	Surface Water Elev. (ft)	D	B	U	M
		(tsf)	(%)		(ft)	(Bulge)	(Shear)	(Penetrometer)
0	Gray Sand Loam Till (continued)							
1								
2								
3								
4								
5								
6								
7								
8								
9								
10								
11								
12								
13								
14								
15								
16								
17								
18								
19								
20								
21								
22								
23								
24								
25								
26								
27								
28								
29								
30								

7/16/2005 8:06:34 AM S:\SOILS\BORING LOGS\CHAMPAIGN CNTY\CURTIS RD MAY 2005.GPJ

End of Boring

An assumed centerline elevation of 100.00 and station of 10+00 is used when this information is not available.  
The Unconfined Compressive Strength (UCS) Failure Mode is indicated by (B-Bulge, S-Shear, P-Penetrometer)  
The SPT (N Value) is the sum of the last two blow values in each sampling zone (AASHTO T206)

BBS, form 137 (Rev. 8-99)

DESIGNED SLD  
CHECKED SMM  
DRAWN SLD  
CHECKED SMM

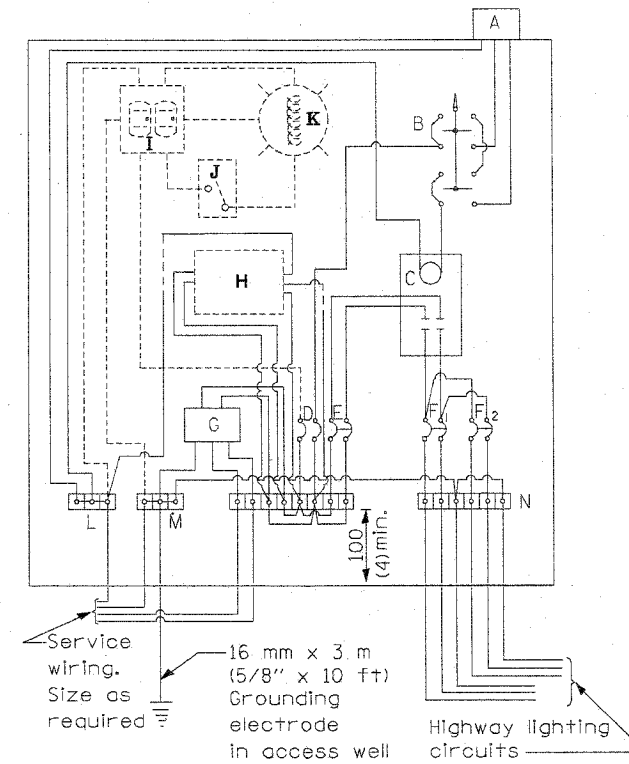
**SOIL BORINGS**  
**CURTIS ROAD BRIDGE ENHANCEMENTS**  
**CHAMPAIGN COUNTY**  
**STATION 297+20.45**

DESIGN FIRM REGISTRATION  
No. 184-000450  
1817 SOUTH NEIL STREET  
SUITE 100  
CHAMPAIGN, IL 61820  
PHONE : 217.373.8900  
FAX : 217.373.8923

**Clark Dietz**  
ENGINEERS

MATERIALS

- A Photocell w/ Integral surge arrester (remote mount in urban areas)
  - B 3 position selector switch HAND-OFF-AUTO
  - C 100 amp\* electrically held contactor, 120V operating coil
  - D 15 amp, 1 pole, circuit breaker
  - E 100 amp\*, 2 pole, main circuit breaker
  - F 20 amp\*, 2 pole, branch circuit breaker (typ). 2 spare c.b. required but not shown
  - G Surge arrester
  - H Transformer (see notes), 1 KVA\*, 240/480V primary, 120/240V sec, single phase
  - I GFCI duplex receptacle
  - J Single pole, single throw switch
  - K Shielded security fixture with 100W lamp
  - L Neutral bar
  - M Equipment ground bar
  - N Terminal block (typ)
- (\* = Size larger as needed)



CONTROL SCHEMATIC

GENERAL NOTES

Locate service pole and control installation adjacent to R.O.W. line with a minimum distance of 9 m (30') from the edge of pavement. Locate in close proximity to the utility transformer so the service drop does not exceed 46 m (150ft) and the total distance of overhead and underground cable (utility transformer to lighting controller) does not exceed 76 m (250ft). Exact location shall be established by the Engineer.

Wiring shall be panel board fashion. All bends shall be right angles. All runs shall vertical or parallel to panel board. Wires shall be grouped or laced.

All control installation components shall be U.L. listed.

Add receptacle, light, and switch in control cabinet, when specified.

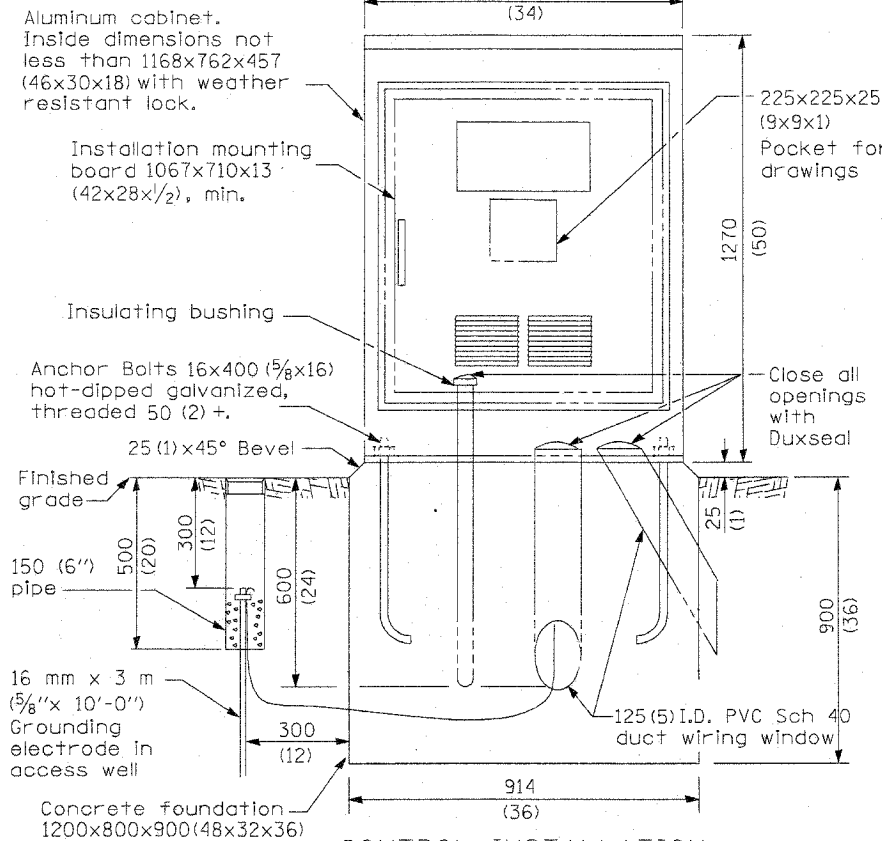
For 480 V service, a step down transformer (dashed lines) is required. Raceways shall terminate 75 (3) above top of concrete foundation.

Label equipment ground buss and neutral buss.  240 V. SERVICE  
 480 V. SERVICE

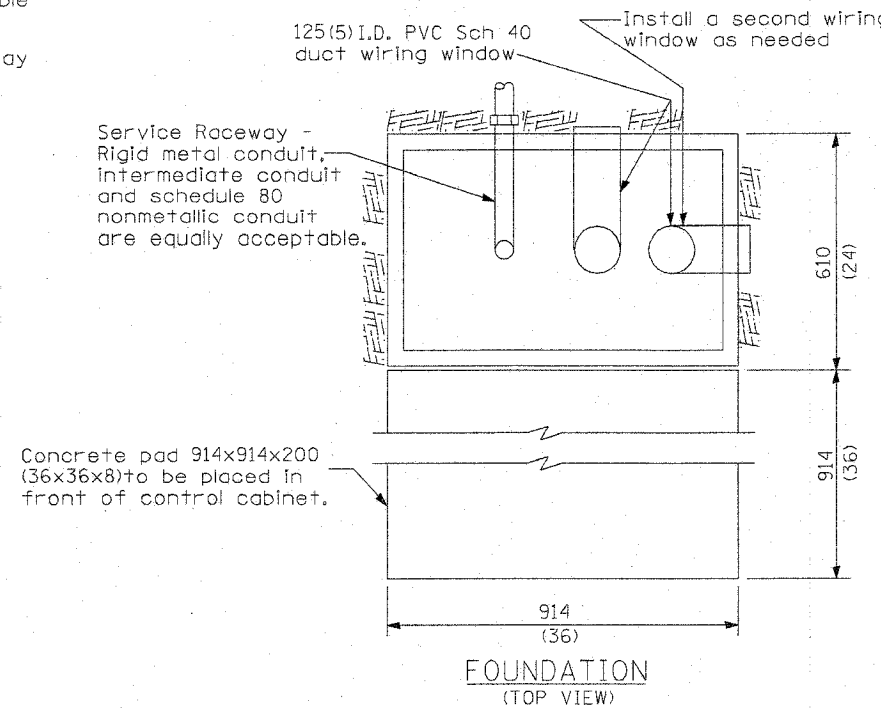
DATE	REVISIONS
	Corrected 1/19/06
3/28/08	Added page

CONTROL INSTALLATION  
Base Mount Cabinet

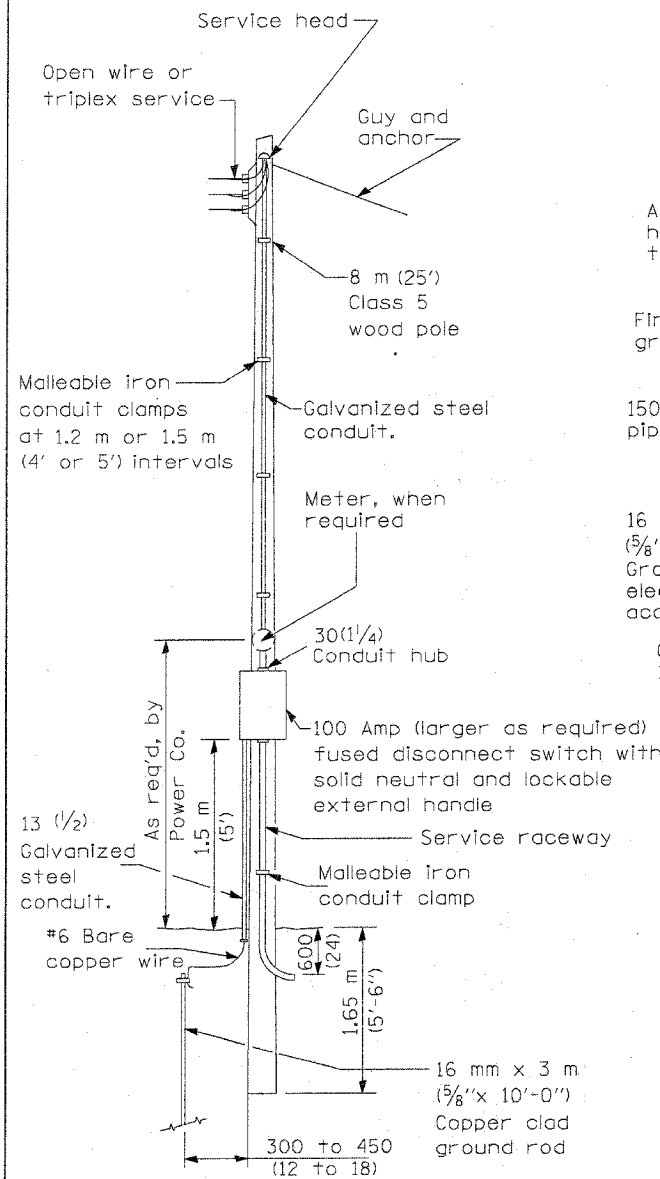
LGT005.DGN



CONTROL INSTALLATION  
(FRONT VIEW)



FOUNDATION  
(TOP VIEW)



SERVICE POLE

Concrete pad 914x914x200 (36x36x8) to be placed in front of control cabinet.

Service Raceway - Rigid metal conduit, intermediate conduit and schedule 80 nonmetallic conduit are equally acceptable.

Install a second wiring window as needed

125 (5) I.D. PVC Sch 40 duct wiring window

Concrete foundation 1200x800x900 (48x32x36)

16 mm x 3 m (5/8" x 10'-0") Grounding electrode in access well

Anchor Bolts 16x400 (5/8x16) hot-dipped galvanized, threaded 50 (2) +.

Insulating bushing

Installation mounting board 1067x710x13 (42x28x1/2), min.

Aluminum cabinet. Inside dimensions not less than 1168x762x457 (46x30x18) with weather resistant lock.

Malleable iron conduit clamps at 1.2 m or 1.5 m (4' or 5') intervals

13 (1/2) Galvanized steel conduit.

100 Amp (larger as required) fused disconnect switch with solid neutral and lockable external handle

Service raceway

Malleable iron conduit clamp

#6 Bare copper wire

16 mm x 3 m (5/8" x 10'-0") Copper clad ground rod

300 to 450 (12 to 18)

30 (1/4) Conduit hub

Meter, when required

Galvanized steel conduit.

8 m (25') Class 5 wood pole

Guy and anchor

Open wire or triplex service

Service head