

F.A. RTE.	SECTION	COUNTY	TOTAL SHEETS	SHEET NO.
	06-00334-00-SW	MCLEAN	13	C1.1
STA.		TO STA.		
FED. ROAD DIST. NO.		ILLINOIS	FED. AID PROJECT	

SUMMARY OF QUANTITIES

PAY CODE	ITEMS	UNIT	QUANTITY
* 2010010	TREE REMOVAL (6 TO 15 UNITS DIAMETER)	UNIT	22
* 2020010	EARTH EXCAVATION	CU YD	110
* 2080015	TRENCH BACKFILL	CU YD	220
28000500	INLET AND PIPE PROTECTION	EACH	4
* 3110100	SUBBASE GRANULAR MATERIAL, TYPE B	TON	90
* 35300200	P.C.C. BASE COURSE 7"	SQ YD	260
* 40603310	HOT MIX ASPHALT SURF CRSE. MIX C, N50	TON	50
* 42300200	P.C.C. DRIVEWAY PAVEMENT, 6"	SQ YD	80
42400800	DETECTABLE WARNINGS	SQ FT	30
44000200	DRIVEWAY PAVEMENT REMOVAL	SQ YD	85
* 44000600	SIDEWALK REMOVAL	SQ FT	4,750
550A0340	STORM SEWER, CLASS A, TYPE 2, 12"	FOOT	60
550B0040	STORM SEWER, CLASS B, TYPE 1, 10"	FOOT	10
* 60228400	MANHOLES, SPECIAL	EACH	1
* 60235700	INLETS, TYPE A, TYPE 3 FRAME & GRATE	EACH	2
* 60255500	MANHOLES TO BE ADJUSTED	EACH	6
* 60260100	INLETS TO BE ADJUSTED	EACH	2
* 60266600	VALVE BOXES TO BE ADJUSTED	EACH	6
67100100	MOBILIZATION	L SUM	1
* 70103700	TRAFFIC CONTROL COMPLETE	L SUM	1
72800100	TELESCOPING STEEL SIGN SUPPORT	FOOT	48
80400100	ELECTRIC SERVICE INSTALLATION	EACH	1
81000600	CONDUIT IN TRENCH, 2" DIA., GALVANIZED STEEL	FOOT	275
81001000	CONDUIT IN TRENCH, 4" DIA., GALVANIZED STEEL	FOOT	30
81012600	CONDUIT IN TRENCH, 2" PVC	FOOT	1,500
* 81400105	HANDHOLE (SPECIAL)	EACH	9
* 81702120	ELECTRICAL CABLE IN CONDUIT 600V (XLP-TYPE USE) 1/C NO. 8	FOOT	3,920
* 83600100	LIGHT POLE FOUNDATION	EACH	7
* 70013798	CONSTRUCTION LAYOUT	L SUM	1
* B2005720	TREE, PYRUS CALLERYANA CHANTICLEER CHANTICLEER CALLERY PEAR, 2-1/2" CALIPER, TREE FORM, BALLED AND BURLAPPED	EACH	2
* K1005481	SHREDDED BARK MULCH, 3"	SQ YD	1
* XX000133	BICYCLE RACKS	EACH	2
* XX005420	ULMUS PARVIFOLIA 'FRONTIER' (FRONTIER CHINESE ELM) 2-1/2 CAL	EACH	7
* XX005819	INLET TYPE A1, SPECIAL	EACH	1
* XX006429	SIDEWALK, SPECIAL	SQ FT	1
* X0324994	ORNAMENTAL PLANTER	EACH	4,750
* X0444100	BENCHES	EACH	16
* X2110100	TOPSOIL FURNISH AND PLACE, SPECIAL	CU YD	9
* X5011100	CONCRETE FOUNDATION REMOVAL	EACH	2
X8250400	LIGHTING CONTROLLER, PEDESTAL MOUNT	EACH	1
	STRAWBERRY CANDY DAYLILY	EACH	36
* 10	LIGHT 445 WATT FLUORESCENT	EACH	2
	LIGHT 105 WATT FLUORESCENT	EACH	5
	COMPOST FURNISH AND PLACE, SPECIAL	CU YD	3

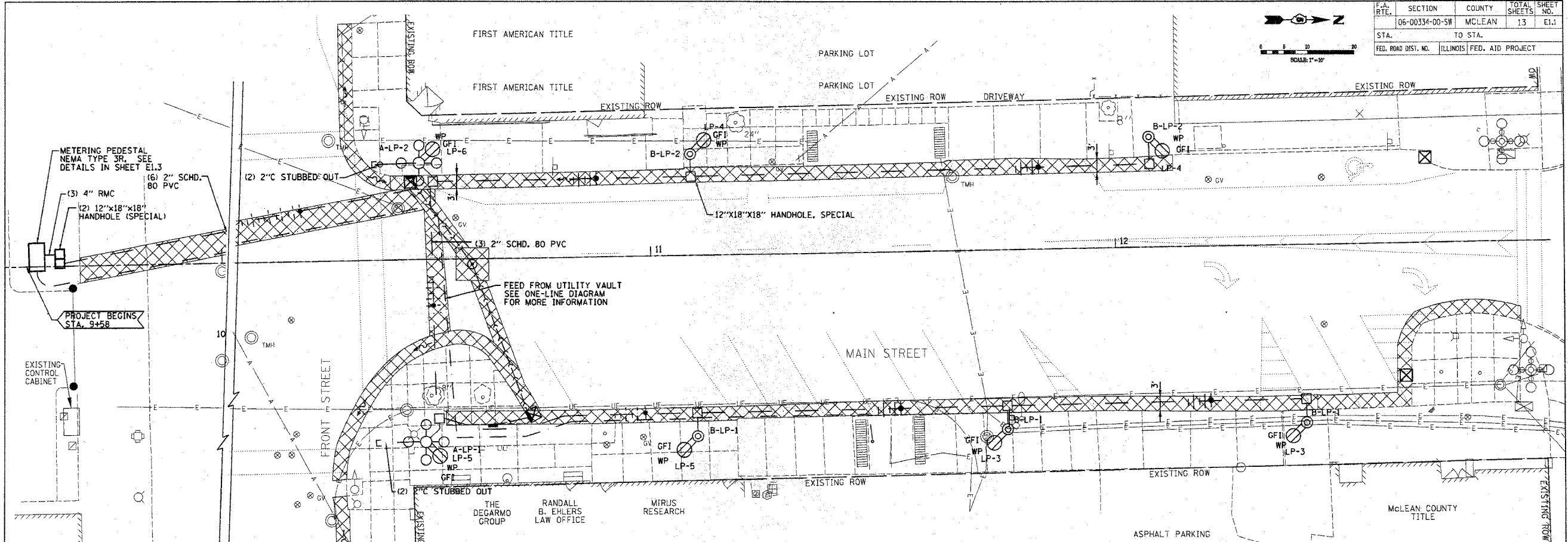
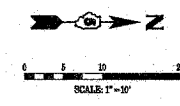
\* SPECIAL PROVISION

REVISIONS	
NAME	DATE
ADDENDUM #1	5-21-08
REV. ADDENDUM #1	5-29-08

ILLINOIS DEPARTMENT OF TRANSPORTATION  
 SUMMARY OF QUANTITIES  
 CITY OF BLOOMINGTON  
 DOWNTOWN MAIN STREET BEAUTIFICATION  
 FRONT STREET TO WASHINGTON STREET  
 SCALE: VERT.  
 HORIZ.  
 DATE: 01-31-08  
 DRAWN BY: DVH  
 CHECKED BY: JGB

PLT SIZE = A  
 FILE NAME = 011111  
 PLOT SCALE = 1/8"=1'-0"  
 USER NAME = MJB/BA

F.A. RTE.	SECTION	COUNTY	TOTAL SHEETS	SHEET NO.
	06-00334-00-SR	MCLEAN	13	E1.1
STA.		TO STA.		
FED. ROAD DIST. NO.		ILLINOIS FED. AID PROJECT		



METERING PEDESTAL  
NEMA TYPE 3R. SEE  
DETAILS IN SHEET E1.3

(3) 4" RMC  
(2) 12"x18"x18"  
HANDHOLE (SPECIAL)

PROJECT BEGINS  
STA. 9+58

EXISTING  
CONTROL  
CABINET

FEED FROM UTILITY VAULT  
SEE ONE-LINE DIAGRAM  
FOR MORE INFORMATION

12"x18"x18" HANDHOLE, SPECIAL

NOTE:  
SEE SCHEDULE FOR STATION  
AND OFFSET OF ELECTRICAL ITEMS

**LEGEND**  
EXISTING

- 36" SAN SANITARY SEWER INLET
- 18" SS STORM SEWER
- T UNDERGROUND TELEPHONE
- G GAS MAIN
- G GAS VALVE
- W WATER SERVICE SHUTOFF SIGN
- E UNDERGROUND ELECTRIC
- A AERIAL ELECTRIC
- P POLE DOWN GUY
- T TELEPHONE POLE
- L LIGHT POLE
- M MAST ARM
- P POWER POLE
- T TRAFFIC SIGNAL

- 5 BULB LIGHT FIXTURE
- x FENCE
- DITCH LINE
- IR IRON ROD
- IP IRON PIPE
- E EVERGREEN TREE
- 15" TREE W/DIA.
- SAP SAPLING
- R.R. RAILROAD SPIKE
- W WATER VALVE
- F FIRE HYDRANT
- M MANHOLE
- W WATER LINE
- R RIGHT OF WAY

**LEGEND**  
PROPOSED

- STORM INLET
- STORM MANHOLE
- SIGN
- SINGLE GLOBE LIGHT FIXTURE AND POLE W/RECEPTACLE
- PLANKER
- 5 GLOBE LIGHT FIXTURE AND POLE WITH RECEPTACLE
- TREE
- HANDHOLE, SPECIAL
- PANELBOARD
- CIRCUIT NUMBER
- GFI DUPLEX RECEPTACLE IN LIGHT POLE WITH WEATHERPROOF IN USE COVER.
- UNDERGROUND CONDUIT 24" DEEP FOR LIGHT FIXTURES.
- FIXTURE TYPE
- PANELBOARD
- CIRCUIT NUMBER
- CONDUIT MINIMUM 2"
- EQUIPMENT GROUND
- NEUTRAL CONDUCTOR
- PHASE CONDUCTOR

**GENERAL NOTES:**

1. REFER TO TRENCH BACK FILL SPECIFIED IN SPECIFICATION AND SEE DETAILS IN SHEET E1.2 FOR TRENCH BACKFILL.
2. PROVIDE MEANS OF IDENTIFYING GROUNDED CONDUCTORS FROM DIFFERENT SERVICES PER NEC 2005 - ARTICLE 200.6.D. PROVIDE STRIPES ON NEUTRAL AND GROUNDS. STRIPES SHALL BE YELLOW FOR LIGHTING CIRCUITS, BROWN FOR RECEPTACLE CIRCUIT. PROVIDE SAME STRIPING ON PHASE CONDUCTORS TO MATCH RESPECTIVE SERVICES.
3. ALL CONDUITS SHALL BE (2) 2" SCHD. 80 PVC UNLESS NOTED OTHERWISE.
4. ALL DUPLEX RECEPTACLES SHALL BE PROVIDED WITH WEATHERPROOF IN-USE COVERS.
5. THE GFI DUPLEX RECEPTACLE WITH IN-USE COVER SHALL CONSIST OF ALL INTERNAL WIRING, FUSING, WEATHERPROOF IN-USE COVER, LABOR, AND EQUIPMENT TO PROVIDE A COMPLETE AND OPERATIONAL SYSTEM. THE WORK SHALL BE PAID FOR AS PART OF THE LIGHT POLE.
6. THE LIGHT AND LIGHT POLE SHALL CONSIST OF ALL INTERNAL WIRING, FUSING, LABOR, AND EQUIPMENT TO PROVIDE A COMPLETE AND OPERATIONAL SYSTEM. THE WORK SHALL BE PAID FOR AT THE CONTRACTOR UNIT PRICE BID PER EACH LIGHT AND LIGHT POLE.

**GENERAL NOTES:**

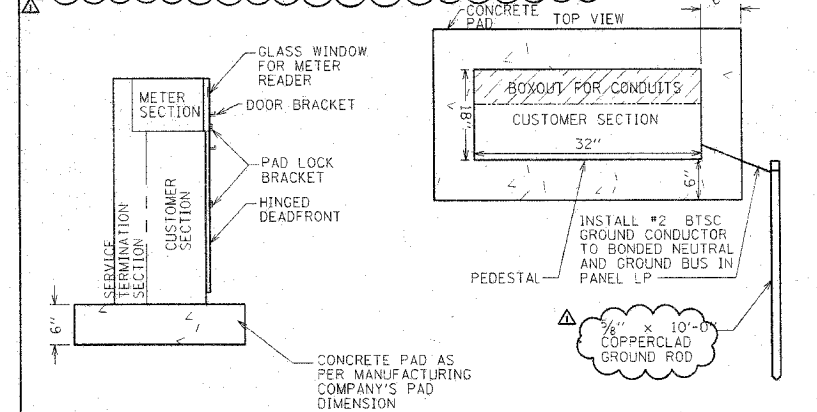
- A. NOT ALL THE ELECTRICAL SYMBOLS LISTED MAY BE USED ON THE DRAWINGS.
- B. THESE DRAWINGS INDICATE THE GENERAL EXTENT OF THE WORK AND ARE NOT INTENDED TO INDICATE OR DESCRIBE ALL WORK REQUIRED FOR THE FULL PERFORMANCE AND COMPLETION OF THE REQUIREMENTS OF THE CONTRACT DOCUMENTS.
- C. EXISTING CONDITIONS, WHEN SHOWN, ARE BASED ON INFORMATION OBTAINED FROM THE OWNER'S RECORD DRAWINGS AND FIELD OBSERVATIONS, AND SHALL NOT BE CONSIDERED "AS-BUILT" AND EXTREME ACCURACY IS NOT GUARANTEED. THE CONTRACTOR SHALL FIELD VERIFY EXISTING INSTALLATIONS BEFORE SUBMITTING THE BID AND PRIOR TO COMMENCING WORK TO ENSURE PROPER COORDINATION AND BE FULLY FAMILIAR WITH EXISTING CONDITIONS. NOTIFY THE ENGINEER IN WRITING OF ANY DISCREPANCIES.
- D. PROVIDE ALL LABOR, MATERIALS, TOOLS, AND EQUIPMENT REQUIRED FOR COMPLETE AND FUNCTIONAL ELECTRICAL SYSTEMS AS SPECIFIED AND INDICATED ON THE DRAWINGS.
- E. MAKE APPLICATION, OBTAIN, AND PAY FOR ALL LICENSES, PERMITS, INSPECTIONS, AND FEES REQUIRED BY ALL AUTHORITIES HAVING JURISDICTION.
- F. PROMPTLY INFORM THE ENGINEER IN WRITING OF ANY DEVIATIONS IN THE CONTRACT DOCUMENTS FROM REQUIREMENTS OF LOCAL UTILITIES, LOCAL MUNICIPALITIES, STATE, OR FEDERAL LAWS AND REGULATIONS.
- G. PERFORM THE WORK IN ACCORDANCE WITH SUCH REQUIREMENTS AT NO ADDITIONAL COST TO THE OWNER.
- H. ALL CONDUCTORS SHALL BE #8 AWG MINIMUM.

REVISIONS	
NAME	DATE
ADDENDUM #1	5-21-08

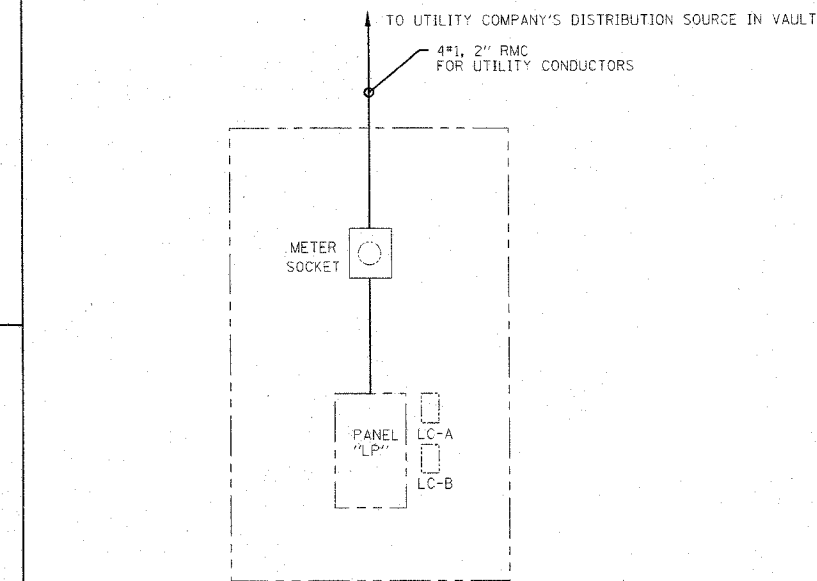
ILLINOIS DEPARTMENT OF TRANSPORTATION  
ELECTRICAL SITE PLAN  
CITY OF BLOOMINGTON  
DOWNTOWN MAIN STREET BEAUTIFICATION  
FRONT STREET TO WASHINGTON STREET  
SCALE: VERT. DATE: 01-31-08  
DRAWN BY:  
CHECKED BY:

F.A. RTE.	SECTION	COUNTY	TOTAL SHEETS	SHEET NO.
06-00334-00-SW		MCLEAN	13	E1.2
STA.	TO STA.			
FED. ROAD DIST. NO.	ILLINOIS	FED. AID PROJECT		

- NOTES:
- NEMA TYPE 3R ALUMINUM ENCLOSURE WITH BOTH SIDES ACCESSIBLE WITH DEAD FRONT.
  - PEDESTAL SHALL BE ANCHORED WITH (4) ANCHOR BOLTS IN CONCRETE PAD.
  - 200 AMP, 3 PHASE METER RATING.
  - ACCESSIBLE DOORS SHALL BE LOCKABLE.
  - METERING PEDESTAL SHALL BE GROUNDED AND BONDED AS PER NEC.
  - MANUFACTURER MILBANK WEST MODEL #CP352529KSP OR APPROVED EQUAL VERIFY COMPLETE. MEGLIO & ASSOCIATES - DON HARROD (217) 496-3524



**1 3-Phase Meter, Load Center, Lighting Control Pedestal**  
Scale: Not To Scale

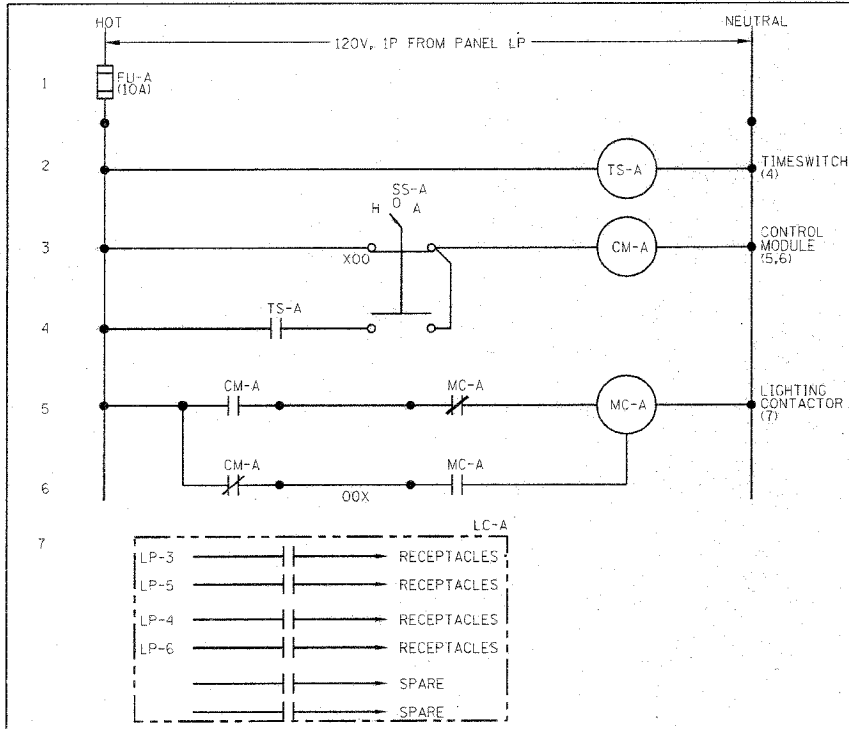


- NOTES:
- PROVIDE ELECTRICALLY HELD LIGHTING CONTACTOR
  - LIGHTING CONTROL SHALL BE ACTIVATED BY TIMER FOR RECEPTACLES.
  - PROVIDE HAND OFF AUTO CONTROL SWITCH.
  - CONTRACTOR SHALL PROVIDE LIGHTING CONTROLS AS REQUIRED TO MAKE THE DECORATIVE LIGHTS OPERATIONAL.
  - ALL LIGHTS WILL BE CONTROLLED VIA PHOTOCELL PER DETAIL 3 ON THIS SHEET.

**2 One-Line Diagram**  
Scale: Not To Scale

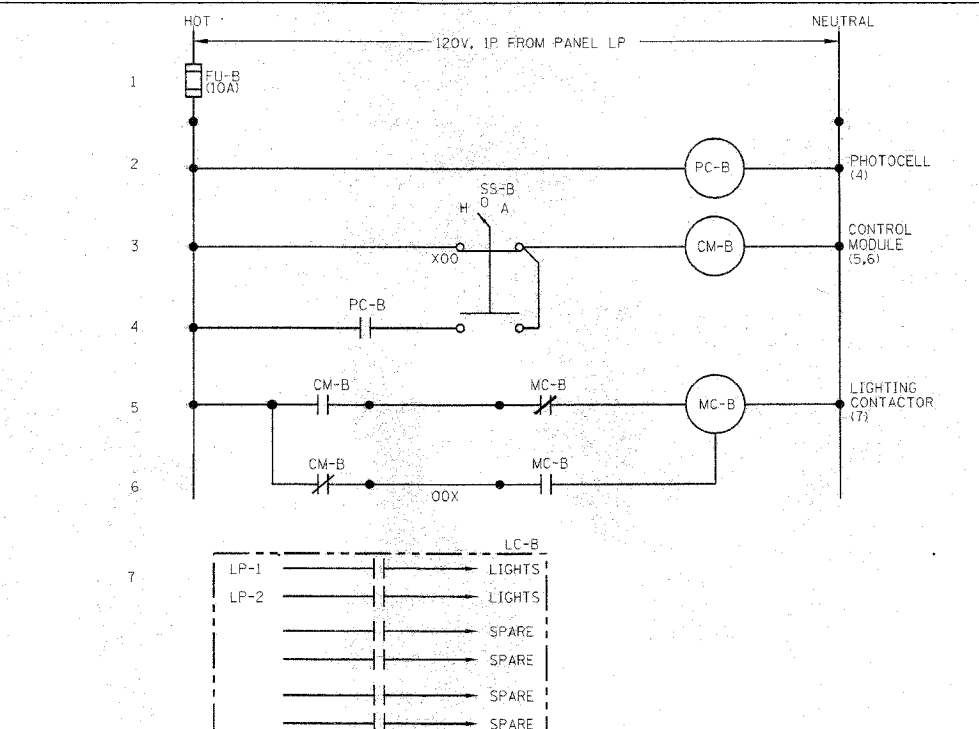
REVISIONS	NAME	DATE
ADDENDUM #1		5-21-08
REV. ADDENDUM #1		5-29-08

ILLINOIS DEPARTMENT OF TRANSPORTATION  
ELECTRICAL DETAILS  
CITY OF BLOOMINGTON  
DOWNTOWN MAIN STREET BEAUTIFICATION  
FRONT STREET TO WASHINGTON STREET  
VERT. SCALE: 1" = 1'-0"  
HORIZ. SCALE: 1" = 1'-0"  
DATE: 01-31-08  
DRAWN BY:  
CHECKED BY:



- LIGHTING CONTROL NOTES:
- LIGHTING CONTACTOR SHALL BE SIEMENS LENO2B006 ELECTRICALLY HELD, 6 POLE, 20 AMP REMOTE CONTROL LIGHTING CONTACTOR WITH ACCESSORY 47 TWO WIRE CONTROL MODULE.
  - TIME SWITCH SHALL BE 120 VAC, PROGRAMMABLE, ELECTRONIC, 7-DAY, DUAL CHANNEL, INTERNALLY MOUNTED; INTERMATIC #ET70215C/120V.
  - SELECTOR SWITCH SHALL BE 3-POSITION, MAINTAINED SIEMENS 3SB03-3MKBX25 WITH METAL "MANUAL-OFF-AUTO" LEGEND PLATE #P30NPJ84.
  - CONTRACTOR MAY SUBMIT EQUIPMENT AND COMPONENTS FROM OTHER MANUFACTURERS FOR ENGINEER'S APPROVAL.
  - PROVIDE AS PART OF MILBANK WEST ENCLOSURE

**5 Exterior Receptacle Control Detail (LC-A)**  
Scale: Not To Scale



- LIGHTING CONTROL NOTES:
- LIGHTING CONTACTOR SHALL BE SIEMENS LENO2B006 ELECTRICALLY HELD, 6 POLE, 20 AMP REMOTE CONTROL LIGHTING CONTACTOR WITH ACCESSORY 47 TWO WIRE CONTROL MODULE.
  - PHOTOCELL SHALL BE 120 VAC WITH 1/2 INCH NIPPLE FOR CONDUIT MOUNTING PARAGON CW201-00.
  - SELECTOR SWITCH SHALL BE 3-POSITION, MAINTAINED SIEMENS 3SB03-3MKBX25 WITH METAL "MANUAL-OFF-AUTO" LEGEND PLATE #P30NPJ84.
  - CONTRACTOR MAY SUBMIT EQUIPMENT AND COMPONENTS FROM OTHER MANUFACTURERS FOR ENGINEER'S APPROVAL.
  - PROVIDE AS PART OF MILBANK WEST ENCLOSURE

**3 Exterior Lighting Control Detail (LC-B)**  
Scale: Not To Scale

PART OF MILBANK CP3 PANELBOARD LP																
PANEL WIDTH:	20"	TYPE:	NOOD	VOLTS:	120/208	PHASE:	3	MAIN BREAKER:	100A							
AIC:	10,000	MOUNTING:	PEDESTAL	MAIN RATING:	100A	WIRE:	4	GROUND BAR:	100%							
		FEED:	BOTTOM	POLES:	3	NEUTRAL BAR:	100%									
BRANCH BREAKERS																
LOAD DESCRIPTION	AMP RATING	POLE	BREAKER ACCESS.	LOAD TYPE	CIRCUIT NUMBER	LEFT PHASE LOAD			RIGHT PHASE LOAD			LOAD DESCRIPTION				
LIGHTING	20	1	L		1	760			655			2	L	20	LIGHTING	
RECEPTACLES	20	1	R		3		400			400		4	R	1	20	RECEPTACLES
RECEPTACLES	20	1	R		5			400			200	6	R	1	20	RECEPTACLES
SPARE	20	1			7							8		1	20	SPARE
SPARE	20	1			9							10		1	20	SPARE
SPARE	20	1			11							12		1	20	SPARE
SPARE	20	1			13							14		1	20	SPARE
SPARE	20	1			15							16		1	20	SPARE
SPARE	20	1			17							18		1	20	SPARE
SPARE	20	1			19							20		1	20	SPARE
SPARE	20	1			21							22		1	20	SPARE
SPARE	20	1			23							24		1	20	SPARE
SPARE	20	1			25							26		1	20	SPARE
SPARE	20	1			27							28		1	20	SPARE
SPARE	20	1			29							30		1	20	SPARE
SUB-TOTAL						760	400	400	655	400	200					
TOTAL						1415	800	600								

NOTES:  
BOND NEUTRAL AND GROUND BUS

TOTAL CONNECTED LOAD: 1.4 kVA x 100 % = 2.8 kVA  
 LIGHTING LOAD: 1.4 kVA x 100 % = 1.4 kVA  
 RECEPTACLE LOAD: 0.0 kVA x 50 % = 0.0 kVA  
 EQUIPMENT LOAD: 0.0 kVA x 100 % = 0.0 kVA  
 TOTAL DEMAND LOAD: 2.8 kVA  
 TOTAL DEMAND CURRENT: 8 A

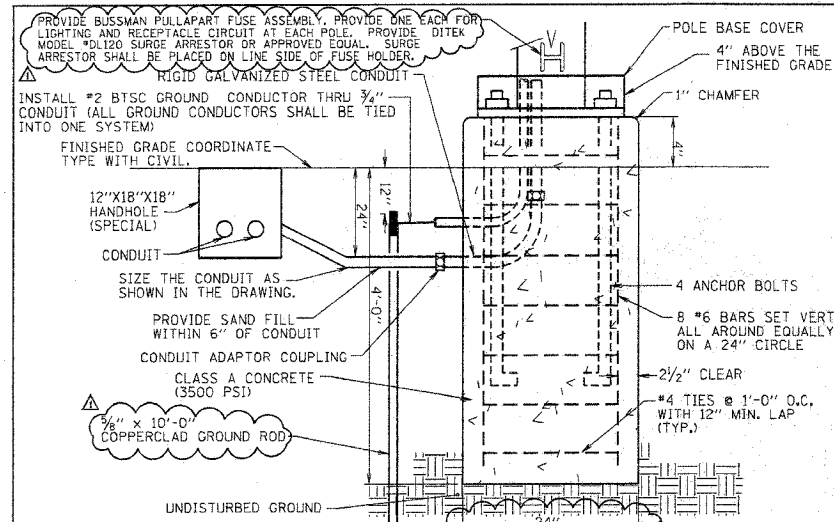
**4 Panelboard Schedules**  
Scale: Not To Scale

ELECTRICAL EQUIPMENT AND DEVICES					
LOCATION	QUANTITY	SINGLE HEAD	MULTI-HEAD	POLE MOUNTED WP/GFI RECEPTACLE	CONTROL CABINET WITH PANELBOARDS, METERING, AND LIGHTING CONTROLS
12+40.34, 38.25 RT	1				
12+7.58, 23.79 LT	1				
11+76.08, 38.61 RT	1				
11+9.44, 38.98 RT	1				
11+8.8, 21.91 LT	1				
10+51.2, 39.31 RT	1				
10+50.57, 20.9 LT	1				
12+40.31, 33.17 RT	1				
12+7.83, 17.51 LT	1				
11+76.05, 33.53 RT	1				
11+9.41, 33.9 RT	1				
11+8.87, 17.1 LT	1				
10+54.1, 34.21 RT	1				
10+53.59, 16.88 LT	1				
09+65.17, 1.62 LT	2				
09+67.12, 33.45 RT	1				

**6 Schedule Of Quantities**  
Scale: Not To Scale

DATE: 01-31-08  
 PLOT SCALE: 1" = 1'-0"  
 USER: NAME: #12345

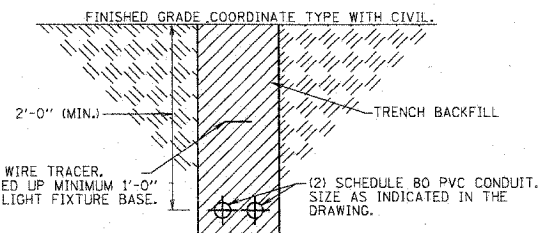
F.A. RTE.	SECTION	COUNTY	TOTAL SHEETS	SHEET NO.
06-00334-00-SW		MCLEAN	13	E1.3
STA.	TO STA.			
FED. ROAD DIST. NO.	ILLINOIS FED. AID PROJECT			



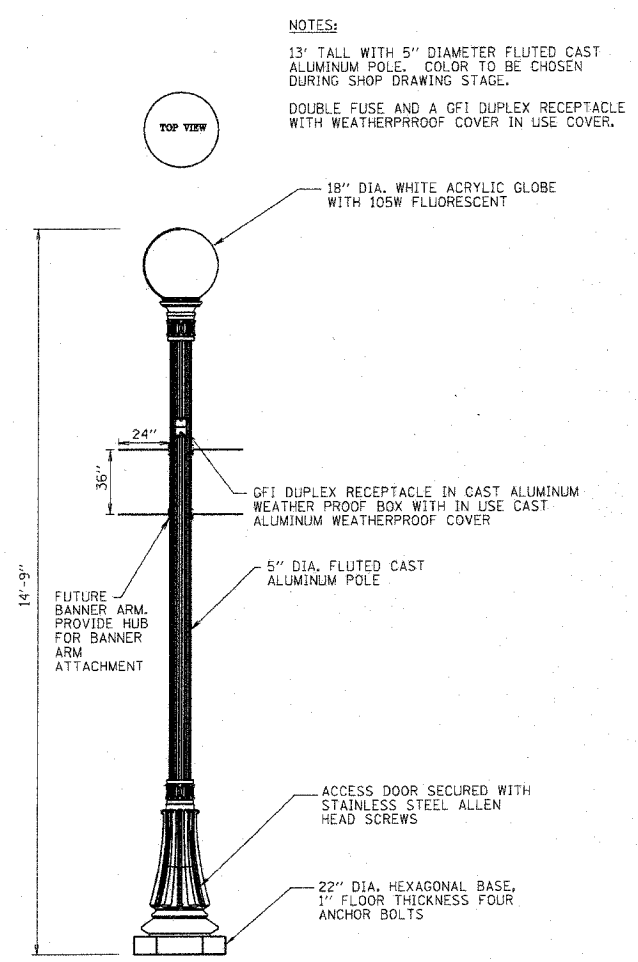
- NOTES:**
- IT SHALL BE THE CONTRACTORS RESPONSIBILITY TO CHECK AND VERIFY ALL ANCHOR BOLT DIMENSIONS (SIZE, BOLT CIRCLE, ETC.,) WITH THE LIGHTING STANDARD PRIOR TO INSTALLATION OF THE FOUNDATIONS.
  - CHAMFER EXPOSED EDGES OF ALL FOUNDATIONS.
  - PROVIDE INSULATING GROUNDING BUSHING ON EXPOSED ENDS (IN BASE OF POLE) OF ALL GALVANIZED STEEL BENDS.
  - ALL SPLICES SHALL TAKE PLACE AT THE ACCESS DOOR OF LIGHT POLE. NO SPLICES WILL BE ALLOWED IN HANDHOLES.
  - POLE BASES SHALL BE PAID FOR, PER EACH LIGHT POLE BASE.

**4 Luminaire Base Details For Light Fixture Type A & B**  
Scale: Not To Scale

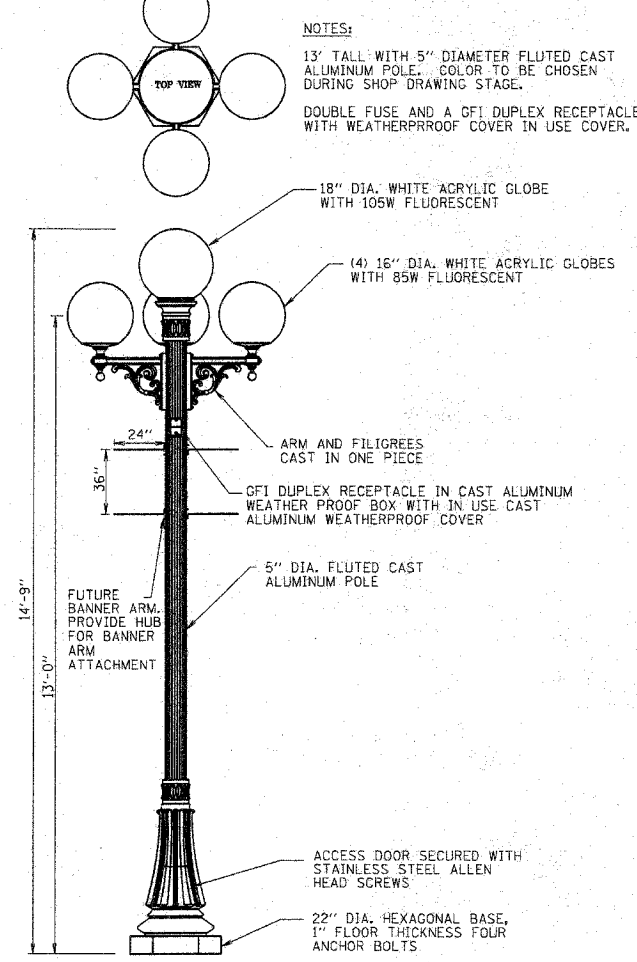
**1 Legend**  
Scale: Not To Scale



**2 Trench Backfill Details**  
Scale: Not To Scale



**6 Luminaire Detail For Light Fixture Type B**  
Scale: Not To Scale



**5 Luminaire Detail For Light Fixture Type A**  
Scale: Not To Scale

**3 Luminaire Schedule**  
Scale: Not To Scale

LUMINAIRE SCHEDULE							
TYPE	MANUFACTURER/CATALOG NO.	DESCRIPTION	LUMINAIRE		LAMP DATA		REMARKS
			VOLT AMPS	VOLTS	LAMP CODE	QNTY	
A	STERNBERG 4-G16WA 508A 478PM 208V G18WA 508BD5- 13' POLE-SP-SPA OR APPROVED EQUAL	POLE MOUNTED 5 GLOBE TYPE LIGHT FIXTURE. SEE LIGHT FIXTURE DETAILS.	445	120	(4) EIKO SP85/41/MED 85 WATT SELF BALLASTED FLUORESCENT  (1) EIKO SP105/41/MED 105 WATT SELF BALLASTED FLUORESCENT	4 1	85 105  MOUNT LIGHT FIXTURES ON 13' TALL ALUMINUM POLE. SP-WITH GFI HUBBELL #GF8300GY RECEPTACLE AND IN USE WEATHERPROOF COVER SPA- PROVIDE ACRYLIC GLOBES HID BALLAST NOT REQUIRED. CONTRACTOR SHALL MATCH EXISTING LIGHT POLES, LUMINAIRES, AND BASES. (FIELD VERIFY PRIOR TO BIDDING). CONTRACTOR SHALL PROVIDE IN LINE FUSES AT ACCESS DOOR. ONE FOR LIGHTING CIRCUIT AND ONE FOR RECEPTACLE.
B	STERNBERG G18WA 508BD5 208V- 13' POLE-SP-SPA OR APPROVED EQUAL	POLE MOUNTED 1 GLOBE TYPE LIGHT FIXTURE. SEE LIGHT FIXTURE DETAILS.	105	120	(1) EIKO SP105/41/MED 105 WATT SELF BALLASTED FLUORESCENT	1	105  MOUNT LIGHT FIXTURES ON 13' TALL ALUMINUM POLE. SP-WITH GFI HUBBELL #GF8300GY RECEPTACLE AND IN USE WEATHERPROOF COVER SPA- PROVIDE ACRYLIC GLOBES HID BALLAST NOT REQUIRED. CONTRACTOR SHALL MATCH EXISTING LIGHT POLE, LUMINAIRE, AND BASE. (FIELD VERIFY PRIOR TO BIDDING). CONTRACTOR SHALL PROVIDE IN LINE FUSES AT ACCESS DOOR. ONE FOR LIGHTING CIRCUIT AND ONE FOR RECEPTACLE.

REVISIONS	
NAME	DATE
ADDENDUM #1	5-21-08

ILLINOIS DEPARTMENT OF TRANSPORTATION  
ELECTRICAL DETAILS  
CITY OF BLOOMINGTON  
DOWNTOWN MAIN STREET BEAUTIFICATION  
FRONT STREET TO WASHINGTON STREET  
SCALE: VERT.  
DATE: 01-31-08  
DRAWN BY:  
CHECKED BY:

PLOT DATE = 08/01/08  
FILE NAME = 07ELE13  
USER NAME = KREBER