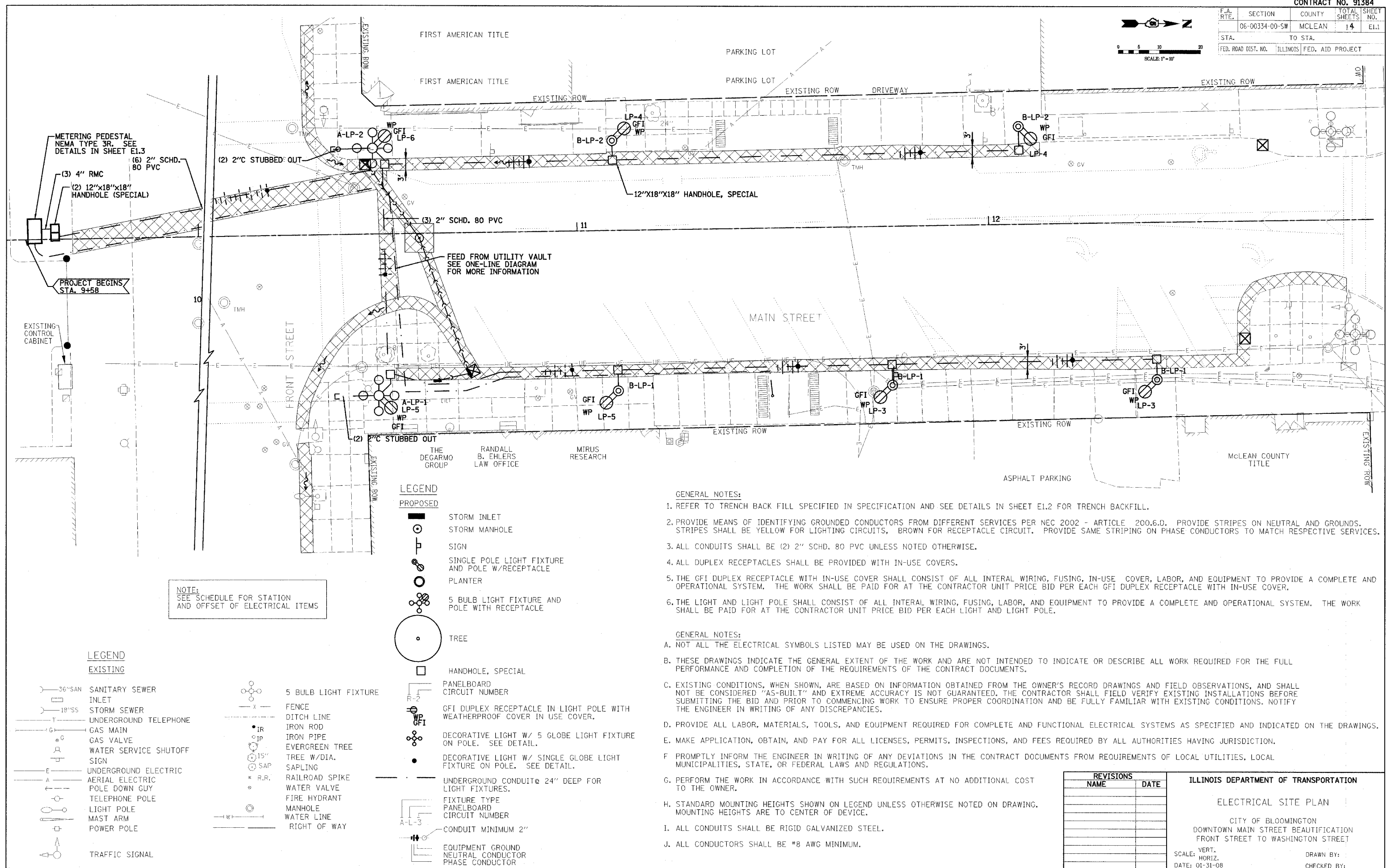
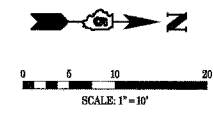


F.A. RTE.	SECTION	COUNTY	TOTAL SHEETS	SHEET NO.
06-00334-00-SW	MCLEAN	ILLINOIS	14	E1.1
STA.	TO STA.		FED. ROAD DIST. NO.	
			ILLINOIS FED. AID PROJECT	



METERING PEDESTAL
NEMA TYPE 3R. SEE
DETAILS IN SHEET E1.3
(6) 2" SCHD.
80 PVC
(3) 4" RMC
(2) 12"x18"x18"
HANDHOLE (SPECIAL)

PROJECT BEGINS
STA. 9+58

NOTE:
SEE SCHEDULE FOR STATION
AND OFFSET OF ELECTRICAL ITEMS

LEGEND

- PROPOSED**
- STORM INLET
 - STORM MANHOLE
 - SIGN
 - SINGLE POLE LIGHT FIXTURE AND POLE W/RECEPTACLE
 - PLANTER
 - 5 BULB LIGHT FIXTURE AND POLE WITH RECEPTACLE
 - TREE
 - HANDHOLE, SPECIAL
 - PANELBOARD CIRCUIT NUMBER
 - GFI DUPLEX RECEPTACLE IN LIGHT POLE WITH WEATHERPROOF COVER IN USE COVER.
 - DECORATIVE LIGHT W/ 5 GLOBE LIGHT FIXTURE ON POLE. SEE DETAIL.
 - DECORATIVE LIGHT W/ SINGLE GLOBE LIGHT FIXTURE ON POLE. SEE DETAIL.
 - UNDERGROUND CONDUIT @ 24" DEEP FOR LIGHT FIXTURES.
 - FIXTURE TYPE PANELBOARD CIRCUIT NUMBER
 - CONDUIT MINIMUM 2"
 - EQUIPMENT GROUND NEUTRAL CONDUCTOR PHASE CONDUCTOR

LEGEND

EXISTING

- 36" SAN SANITARY SEWER
- 18" SS STORM SEWER
- UNDERGROUND TELEPHONE
- GAS MAIN
- GAS VALVE
- WATER SERVICE SHUTOFF
- SIGN
- UNDERGROUND ELECTRIC
- AERIAL ELECTRIC POLE DOWN GUY
- TELEPHONE POLE
- LIGHT POLE
- MAST ARM
- POWER POLE
- TRAFFIC SIGNAL
- 5 BULB LIGHT FIXTURE
- FENCE
- DITCH LINE
- IRON ROD
- IRON PIPE
- EVERGREEN TREE
- TREE W/DIA.
- SAPLING
- RAILROAD SPIKE
- WATER VALVE
- FIRE HYDRANT
- MANHOLE
- WATER LINE
- RIGHT OF WAY

GENERAL NOTES:

1. REFER TO TRENCH BACK FILL SPECIFIED IN SPECIFICATION AND SEE DETAILS IN SHEET E1.2 FOR TRENCH BACKFILL.
 2. PROVIDE MEANS OF IDENTIFYING GROUNDED CONDUCTORS FROM DIFFERENT SERVICES PER NEC 2002 - ARTICLE 200.6.D. PROVIDE STRIPES ON NEUTRAL AND GROUNDS. STRIPES SHALL BE YELLOW FOR LIGHTING CIRCUITS, BROWN FOR RECEPTACLE CIRCUIT. PROVIDE SAME STRIPING ON PHASE CONDUCTORS TO MATCH RESPECTIVE SERVICES.
 3. ALL CONDUITS SHALL BE (2) 2" SCHD. 80 PVC UNLESS NOTED OTHERWISE.
 4. ALL DUPLEX RECEPTACLES SHALL BE PROVIDED WITH IN-USE COVERS.
 5. THE GFI DUPLEX RECEPTACLE WITH IN-USE COVER SHALL CONSIST OF ALL INTERNAL WIRING, FUSING, IN-USE COVER, LABOR, AND EQUIPMENT TO PROVIDE A COMPLETE AND OPERATIONAL SYSTEM. THE WORK SHALL BE PAID FOR AT THE CONTRACTOR UNIT PRICE BID PER EACH GFI DUPLEX RECEPTACLE WITH IN-USE COVER.
 6. THE LIGHT AND LIGHT POLE SHALL CONSIST OF ALL INTERNAL WIRING, FUSING, LABOR, AND EQUIPMENT TO PROVIDE A COMPLETE AND OPERATIONAL SYSTEM. THE WORK SHALL BE PAID FOR AT THE CONTRACTOR UNIT PRICE BID PER EACH LIGHT AND LIGHT POLE.
- GENERAL NOTES:**
- A. NOT ALL THE ELECTRICAL SYMBOLS LISTED MAY BE USED ON THE DRAWINGS.
 - B. THESE DRAWINGS INDICATE THE GENERAL EXTENT OF THE WORK AND ARE NOT INTENDED TO INDICATE OR DESCRIBE ALL WORK REQUIRED FOR THE FULL PERFORMANCE AND COMPLETION OF THE REQUIREMENTS OF THE CONTRACT DOCUMENTS.
 - C. EXISTING CONDITIONS, WHEN SHOWN, ARE BASED ON INFORMATION OBTAINED FROM THE OWNER'S RECORD DRAWINGS AND FIELD OBSERVATIONS, AND SHALL NOT BE CONSIDERED "AS-BUILT" AND EXTREME ACCURACY IS NOT GUARANTEED. THE CONTRACTOR SHALL FIELD VERIFY EXISTING INSTALLATIONS BEFORE SUBMITTING THE BID AND PRIOR TO COMMENCING WORK TO ENSURE PROPER COORDINATION AND BE FULLY FAMILIAR WITH EXISTING CONDITIONS. NOTIFY THE ENGINEER IN WRITING OF ANY DISCREPANCIES.
 - D. PROVIDE ALL LABOR, MATERIALS, TOOLS, AND EQUIPMENT REQUIRED FOR COMPLETE AND FUNCTIONAL ELECTRICAL SYSTEMS AS SPECIFIED AND INDICATED ON THE DRAWINGS.
 - E. MAKE APPLICATION, OBTAIN, AND PAY FOR ALL LICENSES, PERMITS, INSPECTIONS, AND FEES REQUIRED BY ALL AUTHORITIES HAVING JURISDICTION.
 - F. PROMPTLY INFORM THE ENGINEER IN WRITING OF ANY DEVIATIONS IN THE CONTRACT DOCUMENTS FROM REQUIREMENTS OF LOCAL UTILITIES, LOCAL MUNICIPALITIES, STATE, OR FEDERAL LAWS AND REGULATIONS.
 - G. PERFORM THE WORK IN ACCORDANCE WITH SUCH REQUIREMENTS AT NO ADDITIONAL COST TO THE OWNER.
 - H. STANDARD MOUNTING HEIGHTS SHOWN ON LEGEND UNLESS OTHERWISE NOTED ON DRAWING. MOUNTING HEIGHTS ARE TO CENTER OF DEVICE.
 - I. ALL CONDUITS SHALL BE RIGID GALVANIZED STEEL.
 - J. ALL CONDUCTORS SHALL BE #8 AWG MINIMUM.

REVISIONS	
NAME	DATE

ILLINOIS DEPARTMENT OF TRANSPORTATION

ELECTRICAL SITE PLAN

CITY OF BLOOMINGTON
DOWNTOWN MAIN STREET BEAUTIFICATION
FRONT STREET TO WASHINGTON STREET

SCALE: VERT.
HORIZ.
DATE: 01-31-08

DRAWN BY:
CHECKED BY:

PLOT DATE = 01/31/08
FILE NAME = E1.1.E1.1
PLOT SCALE = 1"=10'
USER NAME = J.ROBERT