

INDEX OF SHEETS:

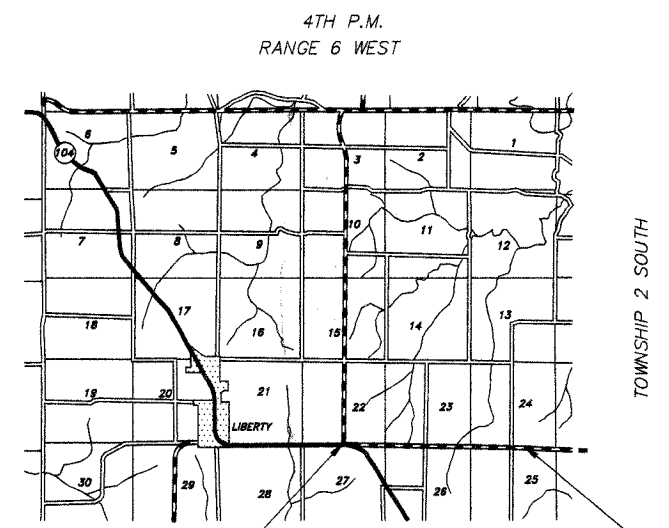
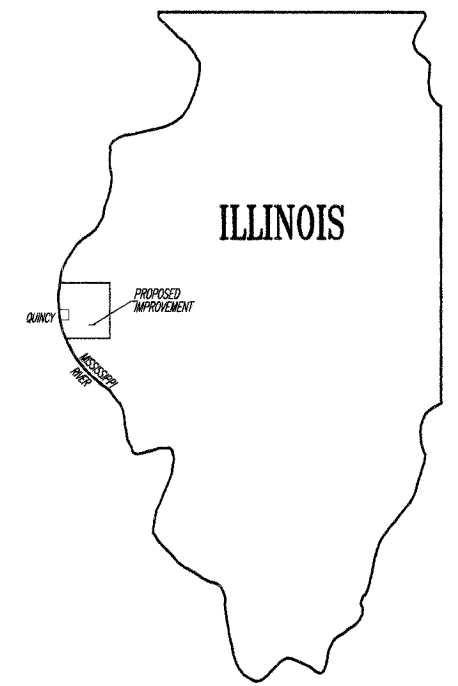
SHEET NO.	SHEET
1	TITLE SHEET
2	SUMMARY OF QUANTITIES GENERAL NOTES
3	TYPICAL CROSS SECTIONS
4-7	PLAN SHEETS
8	SIDE ROAD & ENTRANCE DETAILS BUTT JOINT DETAIL
STANDARD	701001-01
STANDARD	701006-02
STANDARD	701301-02
STANDARD	701306-01
STANDARD	701901
STANDARD	BLR 24-1

STATE OF ILLINOIS  
DEPARTMENT OF TRANSPORTATION

DIVISION OF HIGHWAYS  
PLANS FOR PROPOSED  
SURFACE TRANSPORTATION/RURAL PROGRAM  
LOCAL AGENCY PAVEMENT PRESERVATION

FAS 1603 (CH 39) SECTION 08-00205-00-RS ADAMS COUNTY  
PROJECT NO. RS-1603(101) JOB NO. C-96-221-08

COUNTY	ROUTE	SECTION	TOTAL SHEETS	SHEET
ADAMS	FAS 1603	08-00205-00-RS	8	1



STATION 0+00  
SEC. 08-00205-00-RS  
BEGINS

STATION 105+60  
SEC. 08-00205-00-RS  
ENDS

LOCATION MAP

FUNCTIONAL CLASS: MAJOR COLLECTOR (NON-URBAN)  
ADT=275

PROPOSED IMPROVEMENT CONSISTS OF PLACING 1 1/2" POLYMERIZED HOT-MIX ASPHALT SURFACE COURSE, MIX "C", N50 OVER 3/4" OF LEVELING BINDER (MACHINE METHOD) N50 ON THE EXISTING 22" ROADWAY WITH OTHER MISCELLANEOUS CONSTRUCTION

UTILITIES:

J.U.L.I.E.	1-800-892-0123
AMERITECH	QUINCY, IL
ADAMS RURAL ELECTRICAL CO-OP	CAMP POINT, IL
ABS WATER DISTRICT	GOLDEN, IL
MCLEOD USA	SPRINGFIELD, IL

GROSS LENGTH:

STA. 0+00.00 TO STA. 105+60.00 = 10,560.00 FT.  
NET LENGTH TO BE IMPROVED: 10,560.00 FT. = 2.000 MILES

THESE PLANS WERE PREPARED BY ME OR BY A FULL-TIME MEMBER OF MY STAFF WORKING UNDER MY PERSONAL SUPERVISION.

SUBMITTED BY Ronald A. Klugger DATE 2-26-08  
COUNTY ENGINEER  
LICENSE NO. 062-032961  
LIC. EXPIRES 11/30/2009

APPROVED February 26<sup>th</sup> 2008  
Ronald A. Klugger COUNTY ENGINEER

PASSED FEB 31 2008  
W.R. Jones DISTRICT ENGINEER OF CONSTRUCTION

PASSED APRIL 1<sup>ST</sup> 2008  
Jim Jones DISTRICT ENGINEER OF LOCAL ROADS AND STREETS

RELEASING FOR BID BASED ON LIMITED REVIEW APRIL 1<sup>ST</sup> 2008  
Christine M. Reed DEPUTY DIRECTOR OF HIGHWAYS REGION FOUR ENGINEER

STATE OF ILLINOIS  
DEPARTMENT OF TRANSPORTATION

CONTRACT NO. 93456