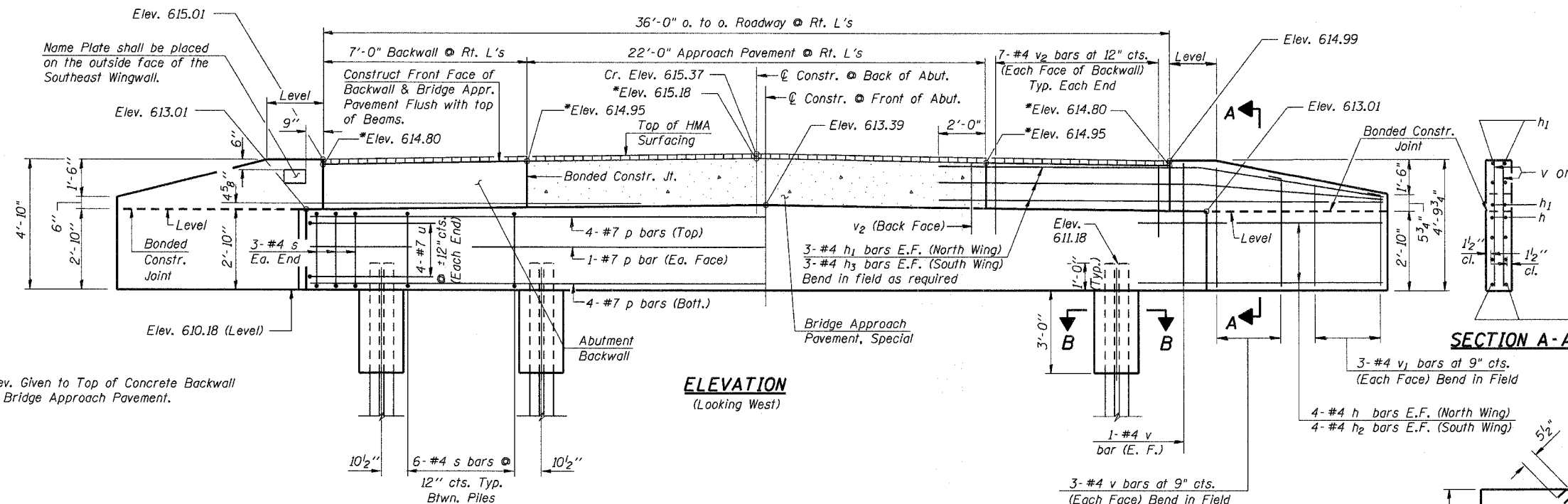


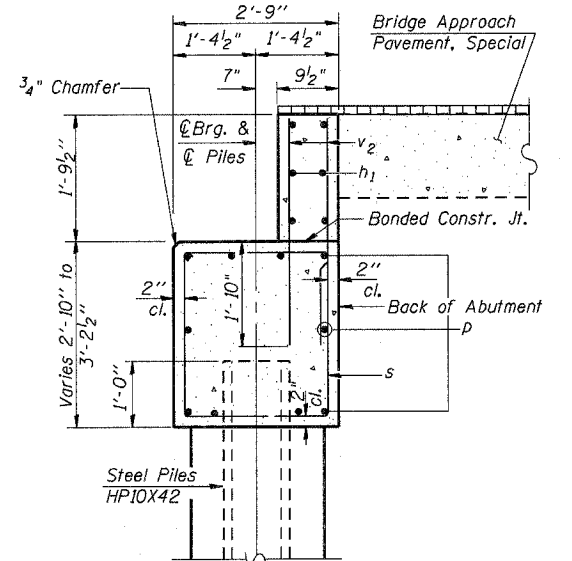
ROUTE NO.	SECTION	COUNTY	TOTAL SHEETS	SHEET NO.
C.H. 8	07-00092-01-BR	SANGAMON	24	17

Sheet 6 of 8



ELEVATION (Looking West)

SECTION A-A

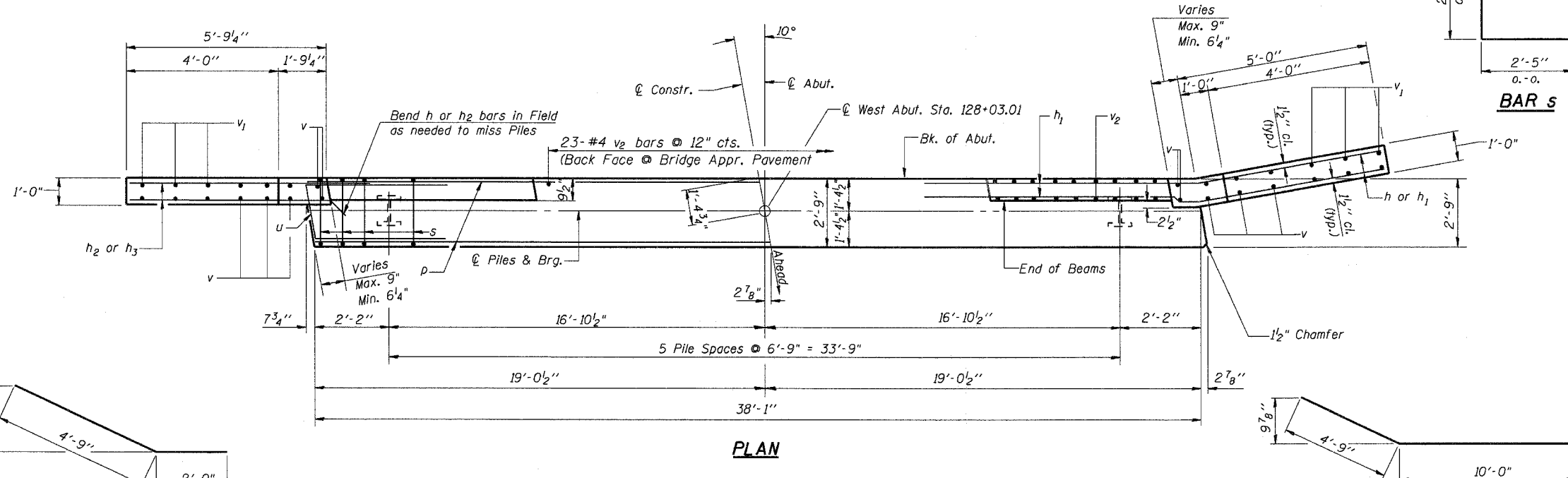


SECTION THRU ABUTMENT (At Right L's, Showing Backwall, Omit Backwall at Bridge Approach Pavement)

BILL OF MATERIAL - WEST ABUT.

BAR	NO.	SIZE	LENGTH	SHAPE
h	8	#4	6'-9"	—
h ₁	6	#4	14'-9"	—
h ₂	8	#4	7'-0"	—
h ₃	6	#4	12'-6"	—
p	10	#7	37'-9"	—
s	36	#4	10'-9"	□
u	8	#7	12'-4"	—
v	16	#4	4'-5"	—
v ₁	12	#4	3'-7"	—
v ₂	51	#4	3'-5"	—
Concrete Structures			Cu. Yd.	14.1
Reinforcement Bars			Pound	1610
Name Plates			Each	1
Steel Piles HP10X42			Foot	175
Test Pile Steel HP10X42			Each	1
Structure Excavation			Cu. Yd.	55
Concrete Encasement			Cu. Yd.	1.5

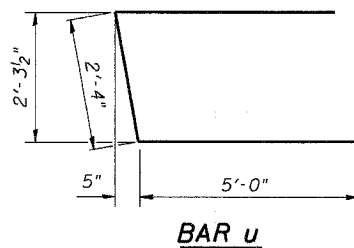
After beams are in place and dowel rods grouted, the backwall and the portions of the wingwall above the bonded construction joint shall be poured.



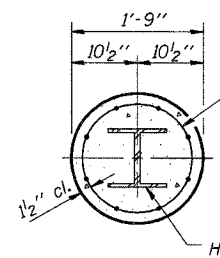
PLAN

BAR S

BAR h

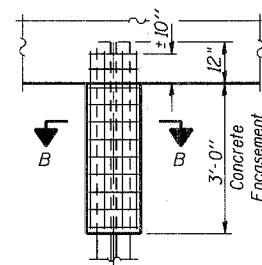


BAR u



SECTION B-B

Welded wire fabric
6 x 6-W4.0 x W4.0
weighing 58#/100 sq. ft.
The cost of Excavation and
Reinforcement is included
with Concrete Encasement.
Forms for Encasement may
be omitted when soil
conditions permit.



BAR h1

PILE DATA

Type: Steel HP10x42
Nominal Required Bearing: 335 kips (Refusal)
Allowable Resistance Available: 112 kips
No. Required: 6 piles **
Estimated Length: 35 ft. @ W Abut.

Note:

The Steel H-Piles shall be according to AASHTO M270 Grade 50.

** Includes one steel test piles HP10x42 to be driven in a permanent location at the West Abut. as directed by the Engineer before ordering the remainder of piles. The test pile shall be driven to 110 percent of the Nominal Required Bearing indicated in the pile data information.

DESIGNED	T.S.H.
CHECKED	A.A.N.
DRAWN	A.J.H.
CHECKED	M.D.C.

WEST ABUTMENT

C.H. 8 OVER SPRING CREEK
SECTION 07-00092-01-BR
SANGAMON COUNTY
STA. 128+68