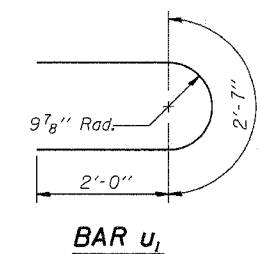
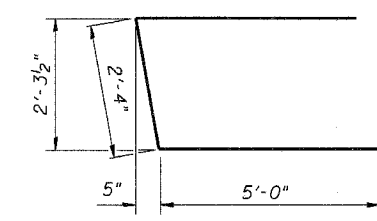
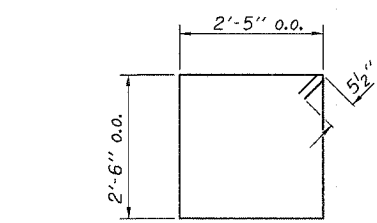
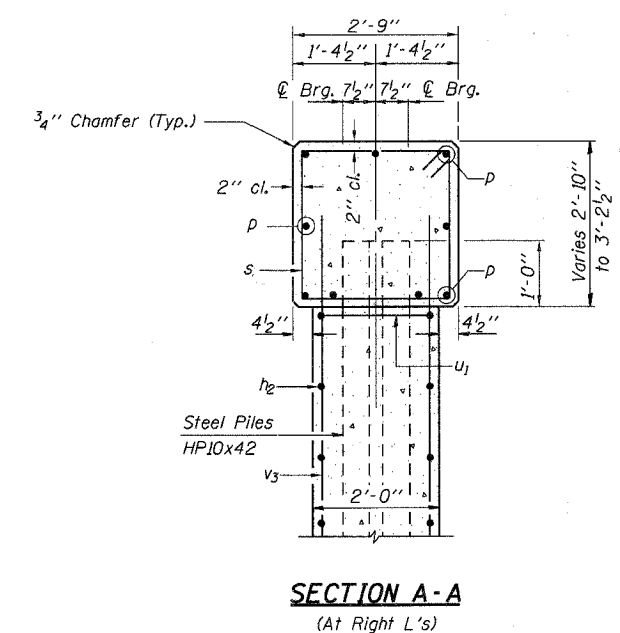
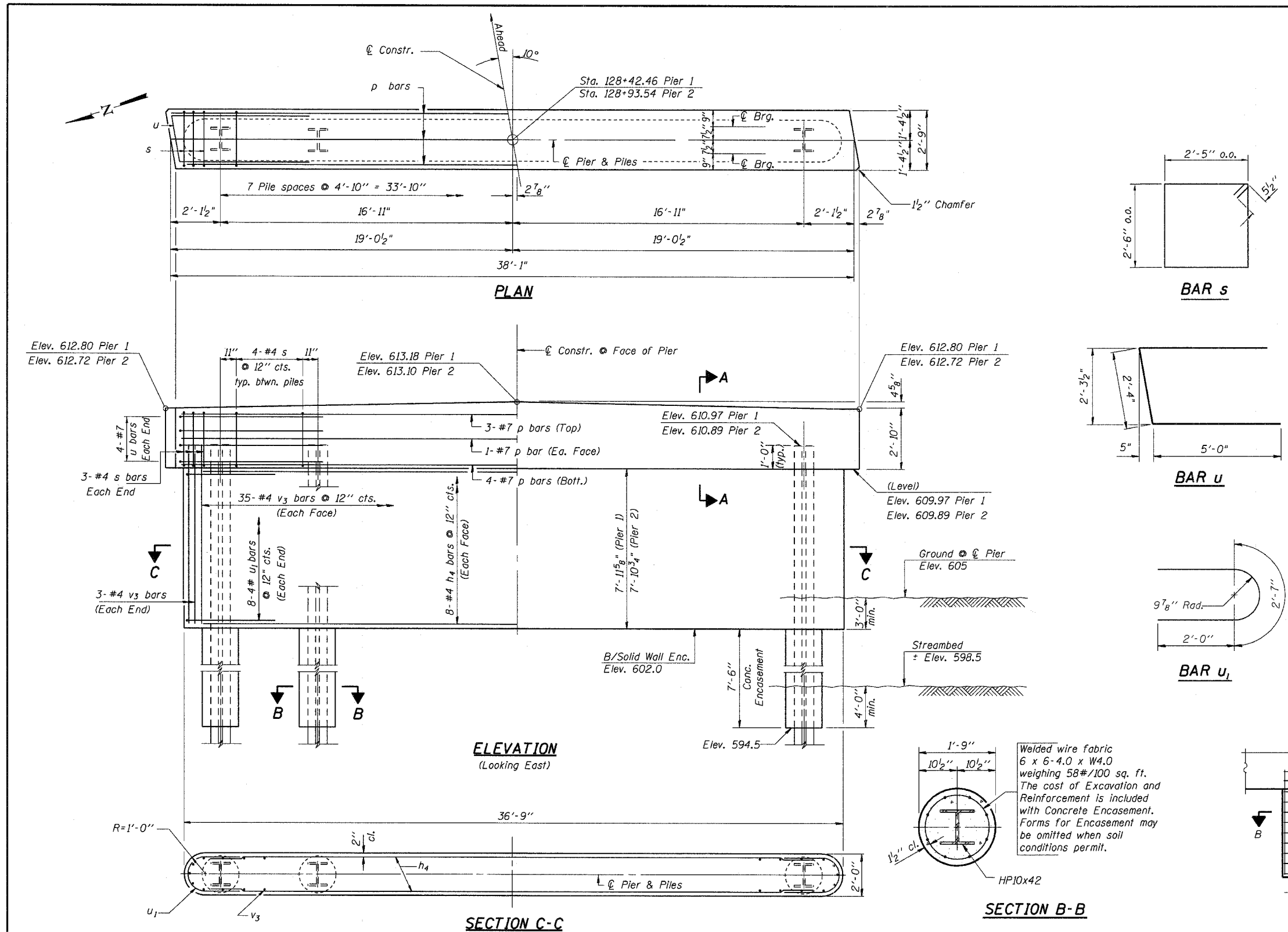


ROUTE NO.	SECTION	COUNTY	TOTAL SHEETS	SHEET NO.
C.H. 8	07-00092-01-BR	SANGAMON	24	19



BILL OF MATERIAL - 2 PIERS

BAR	NO.	SIZE	LENGTH	SHAPE	
h4	32	#4	34'-10"	—	
p	18	#7	37'-9"	—	
s	68	#4	10'-9"	□	
u	16	#7	12'-4"	—	
u1	32	#4	6'-7"	—	
v3	152	#4	9'-6"	—	
Concrete Structures				Cu. Yd.	65.6
Reinforcement Bars				Pound	4140
Steel Piles HPI0x42				Foot	469
Test Pile Steel HPI0x42				Each	2
Structure Excavation				Cu. Yd.	54
Underwater Structure Excavation Protection - Location 1 (Pier 1)				Each	1
Underwater Structure Excavation Protection - Location 2 (Pier 2)				Each	1
Concrete Encasement				Cu. Yd.	10.4

DESIGNED	T.S.H.
CHECKED	A.A.N.
DRAWN	A.J.H.
CHECKED	M.D.C.

PILE DATA
 Type: Steel HPI0x42
 Nominal Required Bearing: 335 kips (Refusal)
 Allowable Resistance Available: 112 kips
 No. Required: 16 piles*
 Estimated Length: 35 ft. • Pier 1
 32 ft. • Pier 2

Note:
 The Steel H-Piles shall be according to AASHTO M270 Grade 50.
 *Includes two steel test piles HPI0x42 to be driven in a permanent location, one at each pier as directed by the Engineer before ordering the remainder of piles. The test piles shall be driven to 110 percent of the Nominal Required Bearing indicated in the pile data information.

PIERS

C.H. 8 OVER SPRING CREEK
 SECTION 07-00092-01-BR
 SANGAMON COUNTY
 STA. 128+68

CUMMINS ENGINEERING CORPORATION

JOB #:	2187
FILE #:	2187PIER
DATE:	2/7/08