

T.R. RTE.	SECTION	COUNTY	TOTAL SHEETS	SHEET NO.
34	95-05109-00-BR	MENARD	14	1
FED. ROAD DIST. NO. ILLINOIS FED. AID PROJECT				CONTRACT NO. 93460

INDEX OF SHEETS

- 1 - TITLE SHEET
- 2 - SUMMARY OF QUANTITIES, DETAILS, & TYPICAL SECTIONS
- 3 - SCHEDULES, DETAILS & TYPICAL SECTIONS
- 4 - PLAN & PROFILE
- 5 - GENERAL PLAN & ELEVATION
- 6 - SUPERSTRUCTURE
- 7 - RAILING
- 8-9 - ABUTMENTS
- 10-14 - CROSS SECTIONS

STANDARDS

- STANDARD 515001-02
- STANDARD 665001-01
- STANDARD 701011-01
- STANDARD 701901
- STANDARD BLR 21-7
- STANDARD BLR 23-2
- STANDARD BLR 26
- STANDARD BLR 27

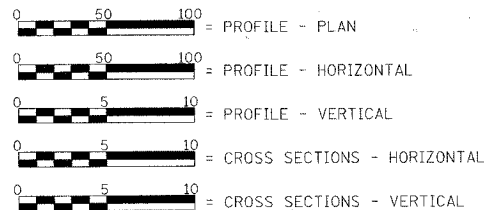
STATE OF ILLINOIS DEPARTMENT OF TRANSPORTATION PLANS FOR PROPOSED HIGHWAY BRIDGE PROGRAM

**T.R. 34 OVER TAR CREEK
SECTION 95-05109-00-BR
PROJECT BROS-129(020)
MENARD COUNTY / ROAD DISTRICT NO. 5
C - 96-228-08**

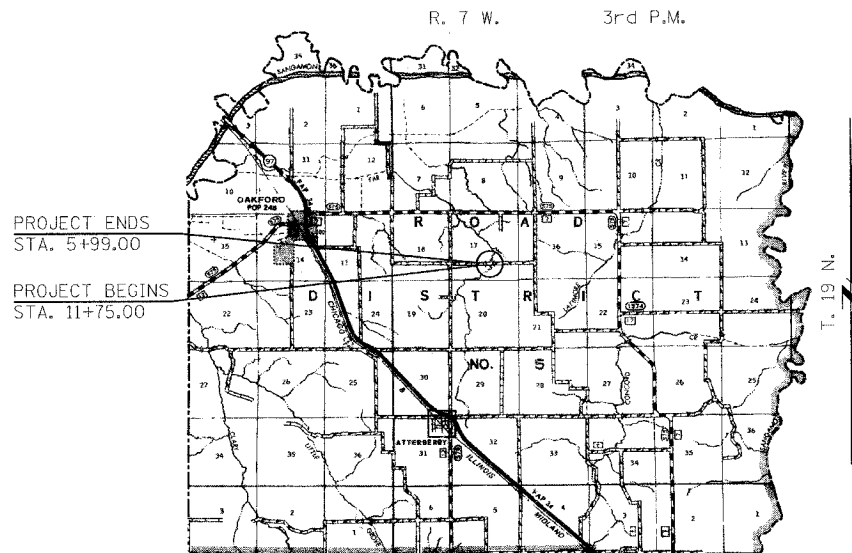
EXISTING STRUCTURE: SINGLE SPAN TIMBER DECK BRIDGE ON STEEL STRINGERS WITH ONE CLOSED TIMBER ABUTMENT AND ONE CLOSED CONCRETE ABUTMENT. ±26'-6" BK.-BK. ABUTMENTS, ±18'-0" OUT-OUT DECK, STEEL CHANNEL RAIL, 0° SKEW. EXISTING STRUCTURE NO. 065-3039

PROPOSED STRUCTURE: SINGLE SPAN PRECAST CONCRETE DECK BEAM (17") BRIDGE ON CLOSED CONCRETE ABUTMENTS. 28'-0" OUT. TO OUT. DECK, 40'-0" BK. TO BK. ABUTMENTS. STEEL RAILING TYPE S-1. 0° SKEW. PROPOSED STRUCTURE NO. 065-3121.

SCALE IN FEET

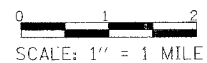


LAND SECTION - 17
 LAND QUARTER SECTION - S.E.
 FUNCTIONAL CLASSIFICATION: LOCAL ROAD (NON-URBAN)
 A.D.T. - 50 (2004)
 A.D.T. - 30 (2020)
 30 M.P.H. DESIGN SPEED



LOCATION PLAN

LENGTH OF SECTION - 576.00 FEET = 0.109 MILES



Christopher P. Kohnen 3/10/08
 EXPIRATION: 11/30/2009

APPROVED March 10, 2008
Thomas R. Casson
 COUNTY ENGINEER

PASSED APRIL 2, 2008
Jimmy Lee
 DISTRICT SIX ENGINEER OF LOCAL ROADS & STREETS

PASSED April 2, 2008
LRG
 DISTRICT SIX ENGINEER OF LOCAL ROADS & STREETS
 DISTRICT SIX CONSTRUCTION ENGINEER

Releasing For Bid Based on Limited Review APRIL 2, 2008
Christine M. Reed
 DEPUTY DIRECTOR OF HIGHWAYS, REGION FOUR ENGINEER

STATE OF ILLINOIS
 DEPARTMENT OF TRANSPORTATION

TOLL FREE
 "JOINT UTILITY LOCATION INFORMATION FOR EXCAVATORS"
 (CALL I.E.) TELEPHONE NUMBER
 1-800-892-0123

CONTRACT NO. 93460

FILE NAME = #FILEL6	USER NAME = #USER#	DESIGNED -	REVISED -	Allen Henderson & Associates, Inc. Civil and Structural Engineers Springfield, IL 62703 Phone: (217)544-8033 IL Design Firm No. 184-001907	TITLE SHEET	T.R. RTE.	SECTION	COUNTY	TOTAL SHEETS	SHEET NO.
	PLOT SCALE = #SCALE#	DRAWN -	REVISED -			34	95-05109-00-BR	MENARD	14	1
	PLOT DATE = #DATE#	CHECKED -	REVISED -			CONTRACT NO. 93460		FED. ROAD DIST. NO. ILLINOIS FED. AID PROJECT		

SCALE: 1" = 1 MILE SHEET NO. 1 OF 14 SHEETS STA. 5+99.00 TO STA. 11+75.00