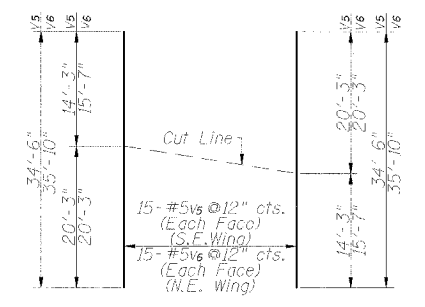
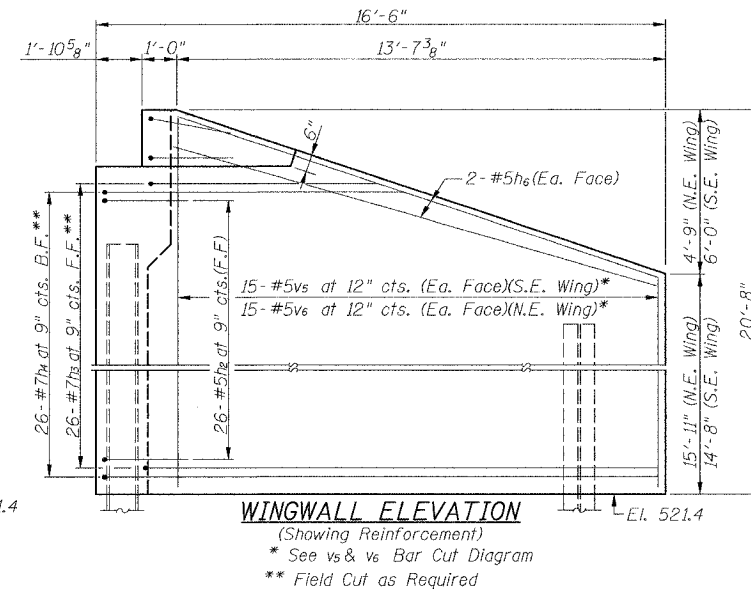
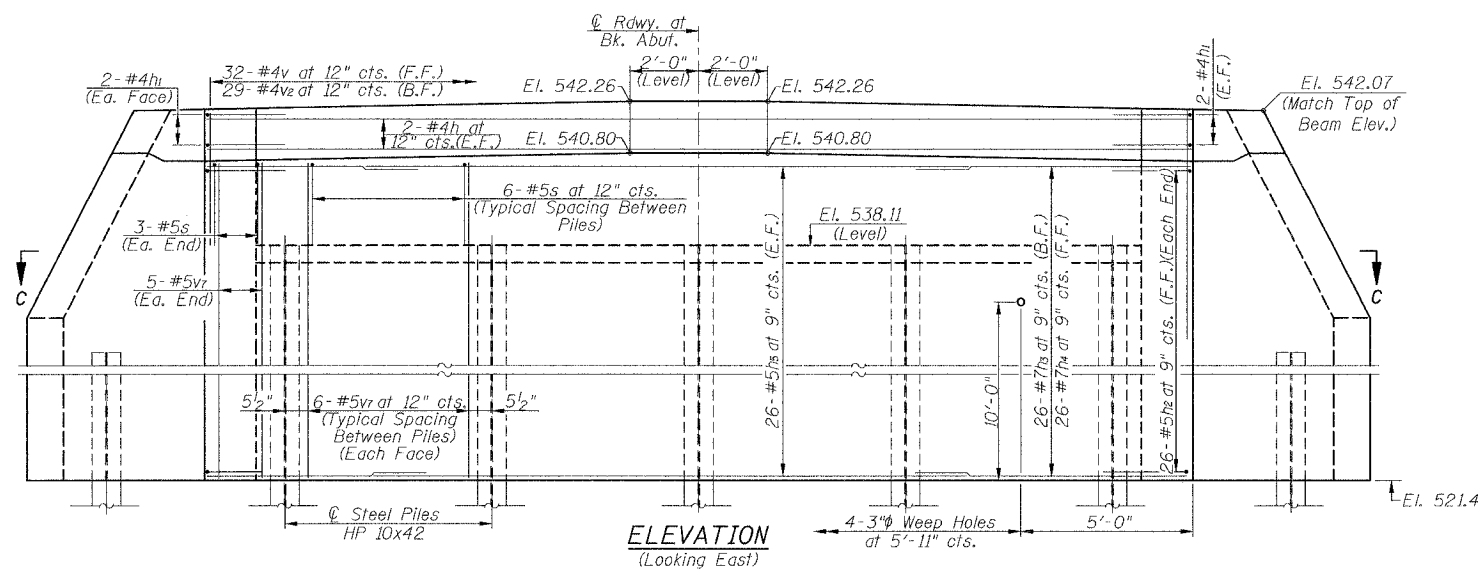
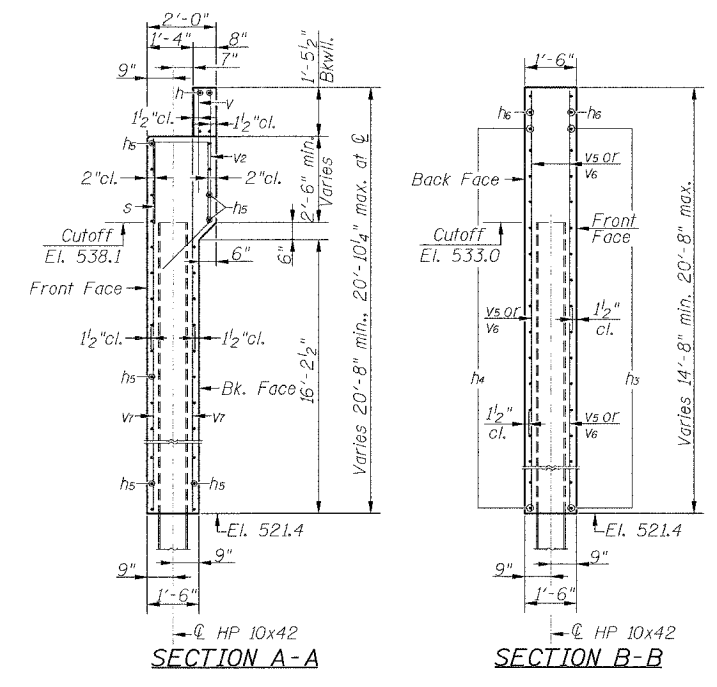
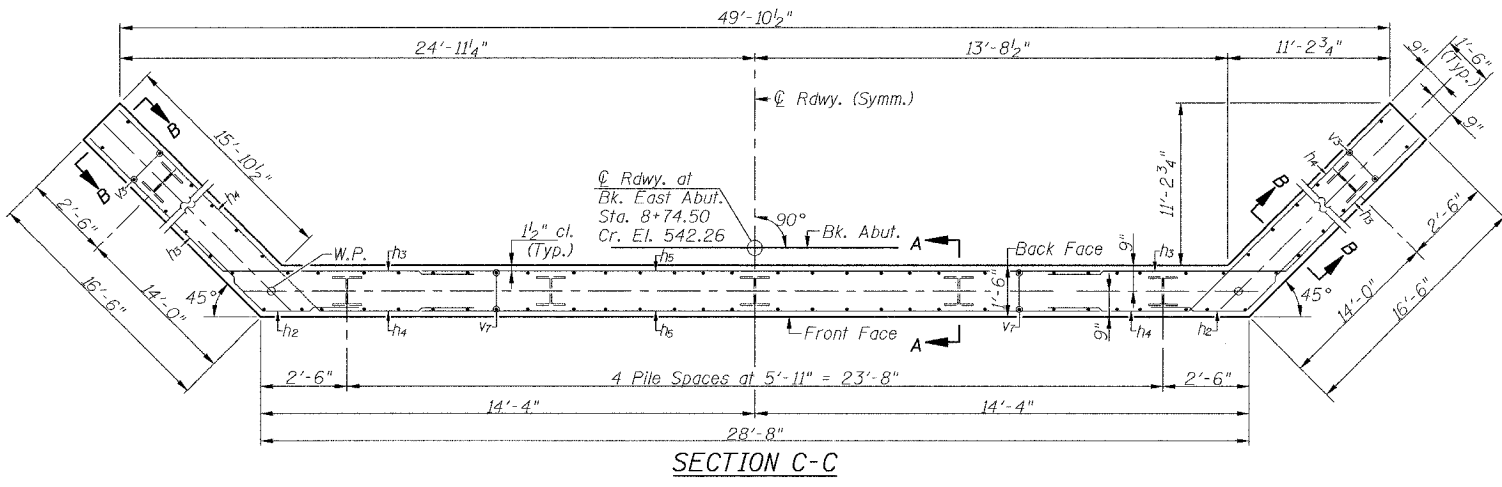
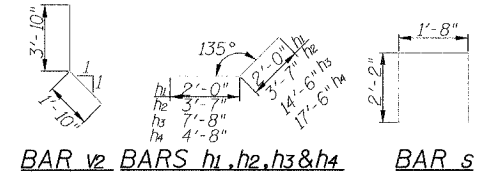
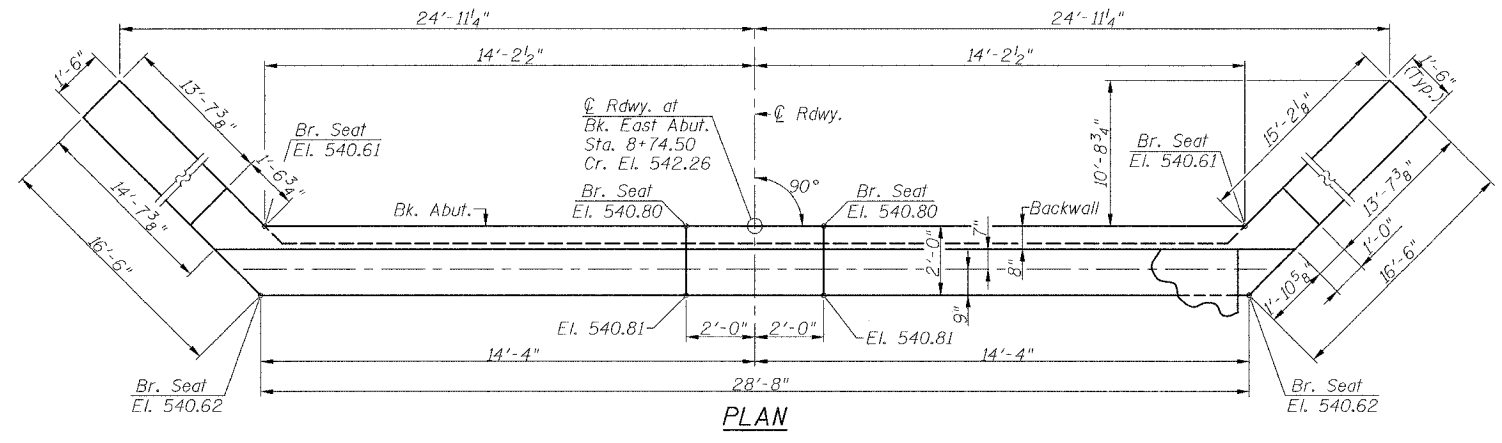


T.R. RTE.	SECTION	COUNTY	TOTAL SHEETS	SHEET NO.
34	95-05109-00-BR	MENARD	14	9
CONTRACT NO.			93160	
FED. ROAD DIST. NO. ILLINOIS FED. AID PROJECT				



NOTES
 All exposed edges shall have standard 3/4\"/>



PILE DATA
 Type: Steel HP 10x42
 Nominal Required Bearing: 300 Kips
 Allowable Resistance Available: 100 Kips
 Est. Length: 48'
 No. of Production Piles: 6
 No. of Test Piles: 1
 The test pile shall be driven to 110 percent of the Nominal Required Bearing indicated in the pile data information.
 The Steel H-Piles shall be according to AASHTO M270 Grade 50.

BILL OF MATERIAL EAST ABUTMENT

BAR	NO.	SIZE	LENGTH	SHAPE
h	4	#4	31'-8"	—
h1	8	#4	4'-0"	—
h2	52	#5	7'-2"	—
h3	52	#7	22'-2"	—
h4	52	#7	22'-2"	—
h5	52	#5	20'-6"	—
h6	8	#5	14'-1"	—
s	30	#5	6'-0"	—
v	32	#4	3'-0"	—
v2	29	#4	5'-8"	—
v5	15	#5	34'-6"	—
v6	15	#5	35'-10"	—
vr	58	#5	18'-10"	—
Reinforcement Bars				Pound 9040
Concrete Structures				Cu. Yd. 65.7
Furnishing Steel Piles HP 10x42				Foot 288
Driving Steel Piles				Foot 288
Test Pile Steel HP 10x42				Each 1
Underwater Structure Excavation				Each 1
Protection - Location 2				Each 1
Structure Excavation				Cu. Yd. 157