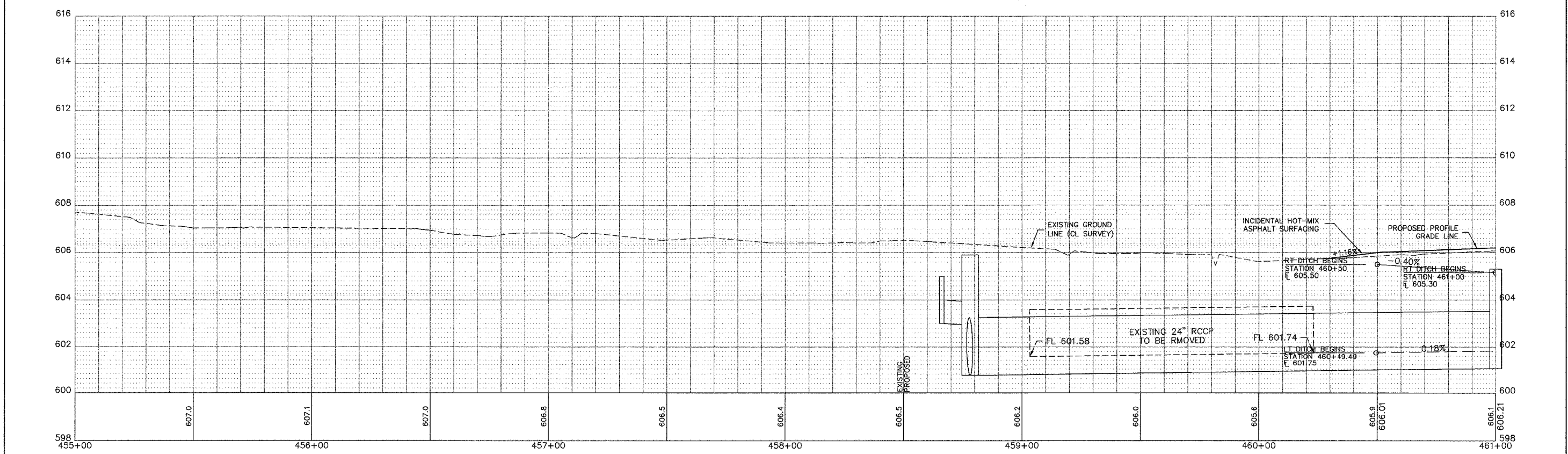
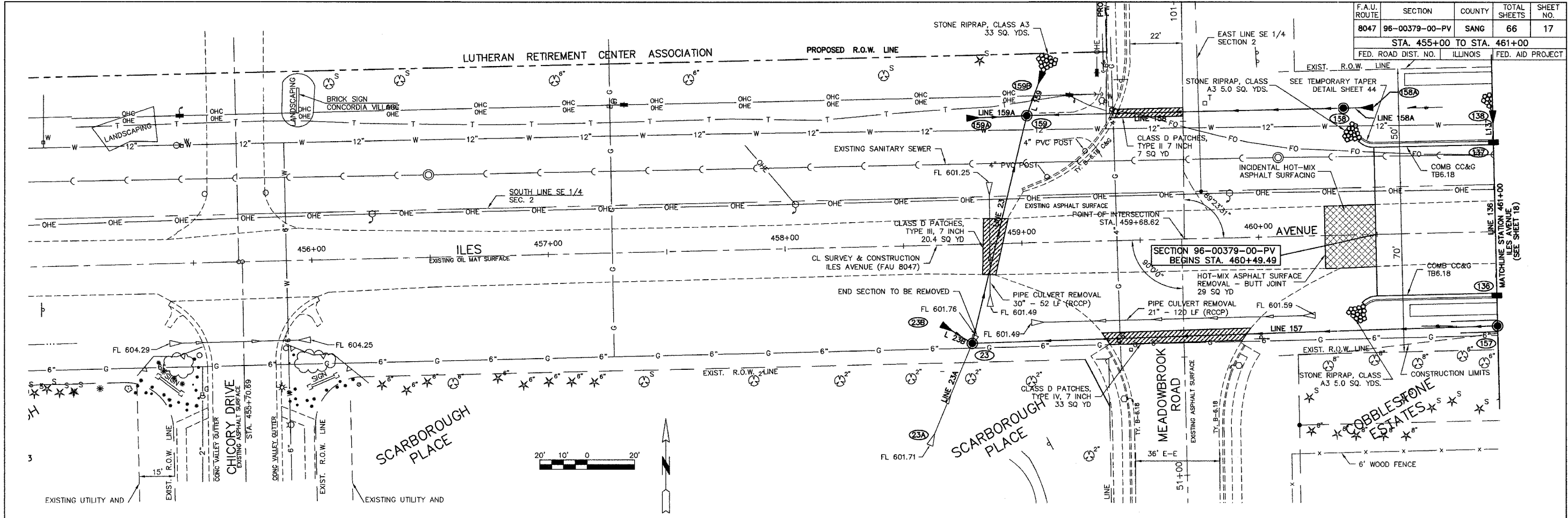


F.A.U. ROUTE	SECTION	COUNTY	TOTAL SHEETS	SHEET NO.
8047	96-00379-00-PV	SANG	66	17
STA. 455+00 TO STA. 461+00				
FED. ROAD DIST. NO.	ILLINOIS	FED. AID PROJECT		



SCALES
 1" = 20' HORIZONTAL
 1" = 2' VERTICAL

PLAN & PROFILE - ILES AVENUE
 STATION 455+00 - 461+00
 SHEET 17 OF 66 SHEETS

Attached (hard) files: 4-1
 X:\BASE (S:\MVA\CONPLANS_2007\CONPLANS_2007\17-11-08.dwg)
 X:\BASE (S:\MVA\CONPLANS_2007\CONPLANS_2007\17-11-08.dwg)
 X:\BASE (S:\MVA\CONPLANS_2007\CONPLANS_2007\17-11-08.dwg)