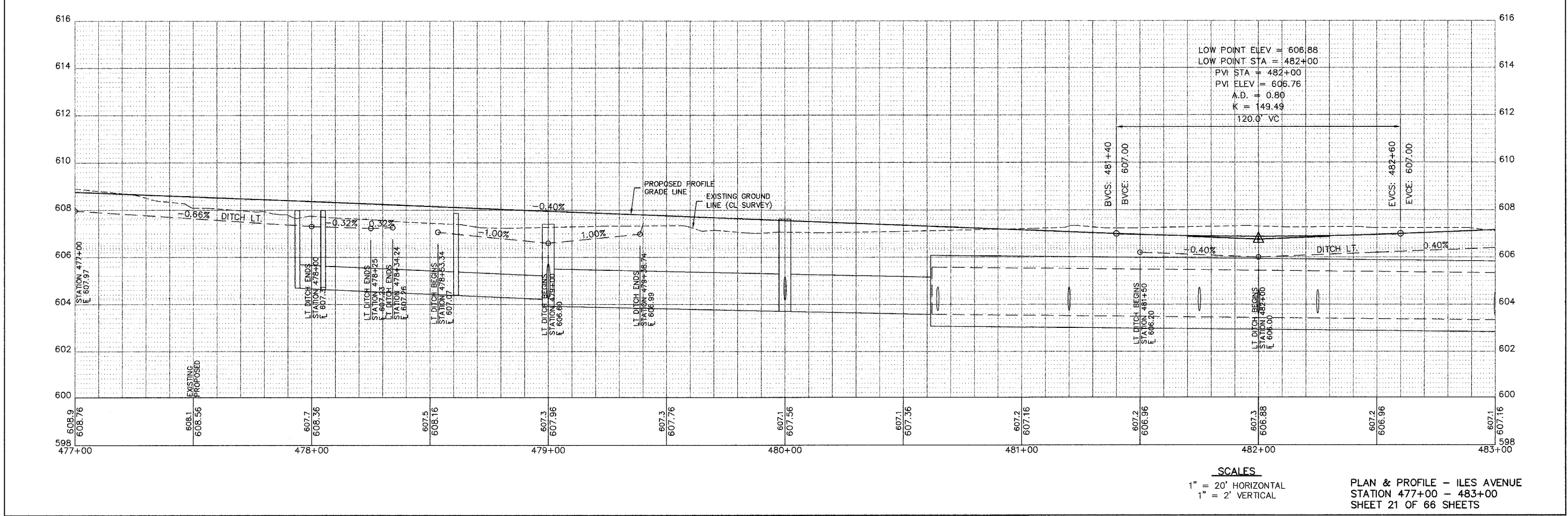
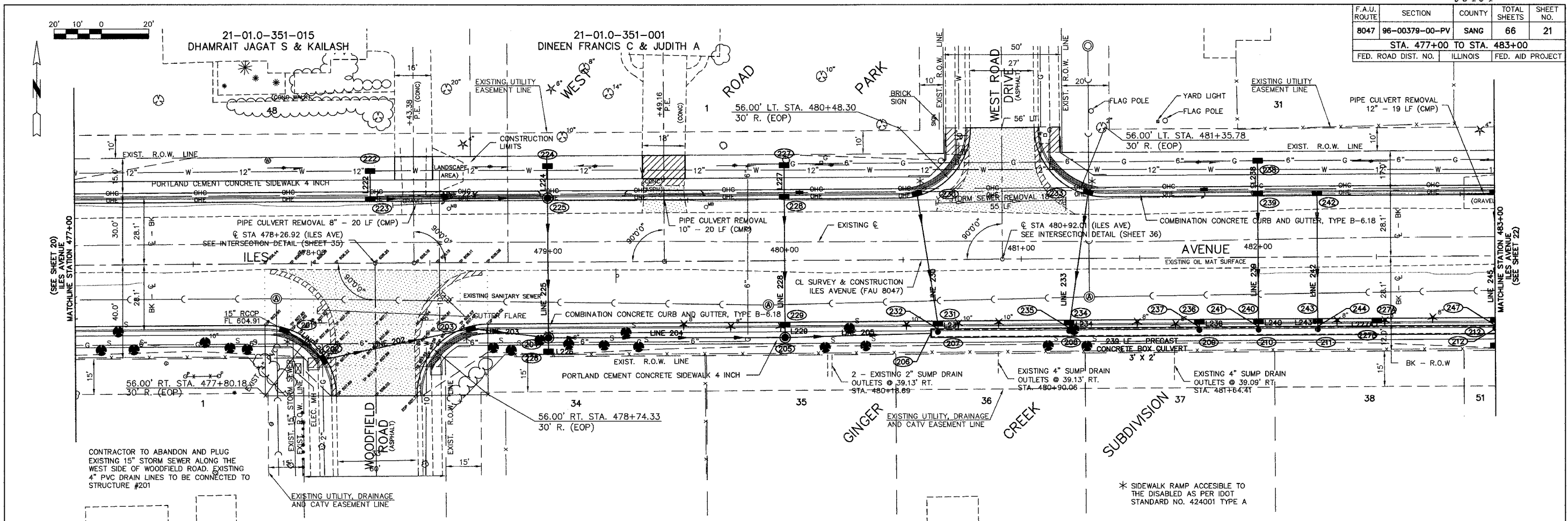


F.A.U. ROUTE	SECTION	COUNTY	TOTAL SHEETS	SHEET NO.
8047	96-00379-00-PV	SANG	66	21
STA. 477+00 TO STA. 483+00				
FED. ROAD DIST. NO.	ILLINOIS	FED. AID PROJECT		



SCALES  
1" = 20' HORIZONTAL  
1" = 2' VERTICAL

PLAN & PROFILE - ILES AVENUE  
STATION 477+00 - 483+00  
SHEET 21 OF 66 SHEETS

Attached (VBA) Sheet 41  
to BASE (S:\VBA\DOT\CONPLANS\_2007\11-01-08\11-01-08.dwg)  
to TRK (S:\VBA\DOT\CONPLANS\_2007\11-01-08\11-01-08.dwg)