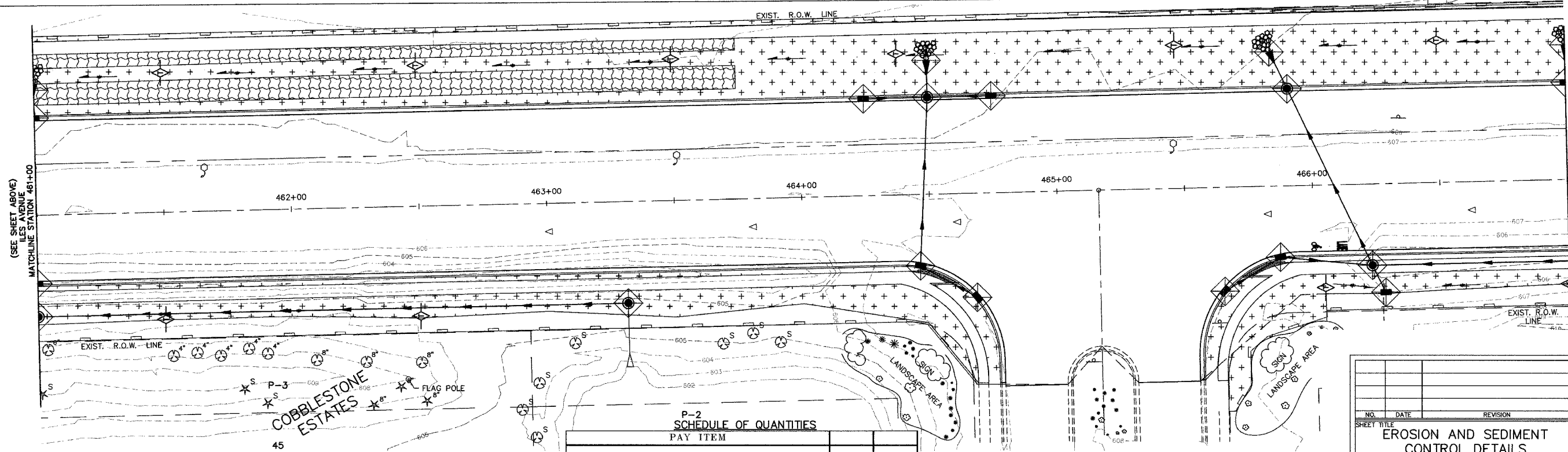
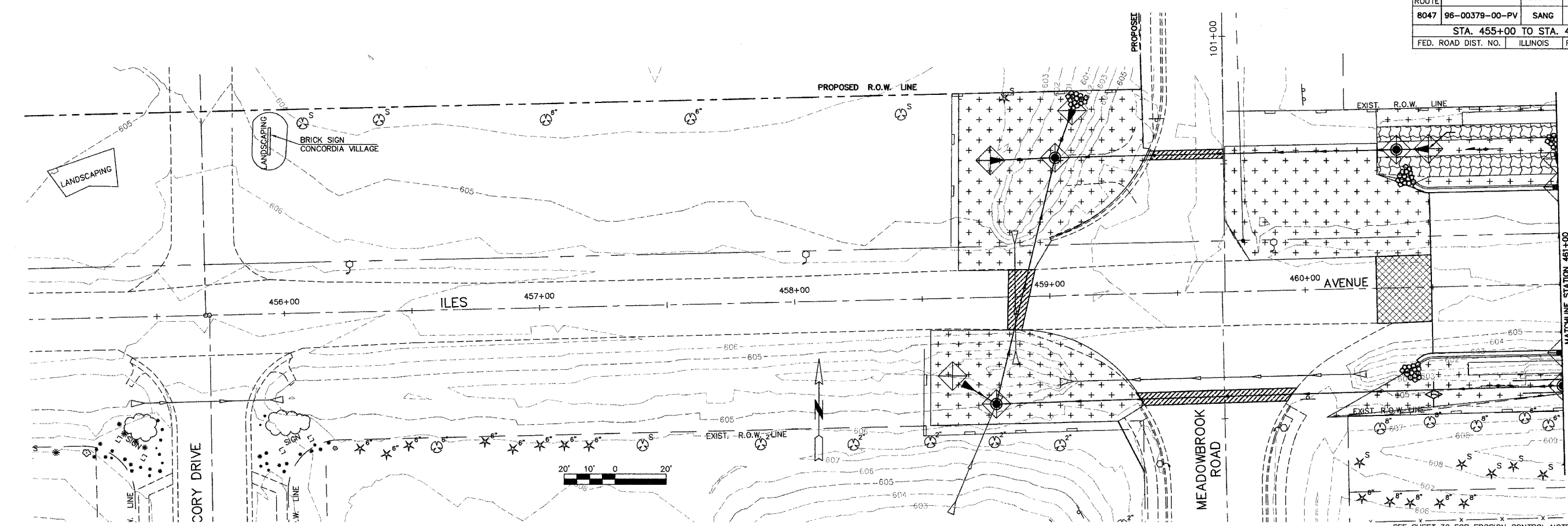


F.A.U. ROUTE	SECTION	COUNTY	TOTAL SHEETS	SHEET NO.
8047	96-00379-00-PV	SANG	66	29
STA. 455+00 TO STA. 467+00				
FED. ROAD DIST. NO.	ILLINOIS	FED. AID PROJECT		



P-2  
SCHEDULE OF QUANTITIES

PAY ITEM	UNIT	QUANTITY
EROSION CONTROL BLANKET	SQ YD	531
TEMPORARY DITCH CHECKS	EACH	10
PERIMETER EROSION BARRIER	FOOT	1607
INLET AND PIPE PROTECTION	EACH	24

NO.	DATE	REVISION	BY

SHEET TITLE  
**EROSION AND SEDIMENT CONTROL DETAILS**

PROJECT  
**ILES AVENUE**

PROJECT NO. 96100  
SCALE 1" = 20'  
DATE OCT. 2007  
DRAWN BY MEC  
CHECKED BY PBW  
DRAWING FILE C-SWPP  
DRAWING NO.

**MEC**  
MARTIN ENGINEERING COMPANY of Illinois  
CONSULTING ENGINEERS/LAND SURVEYORS  
(ILLINOIS PROFESSIONAL DESIGN FIRM NO. 124-002843)  
3223 S. MEADOWBROOK RD., SPRINGFIELD, ILLINOIS 62111  
Phone: (217) 698-8900, Fax: (217) 698-8922, E-Mail: mecmal@martinengineeringco.com

29  
OF 66 SHEETS

Attached to: 96100\CONPLANS\_2007\C-SWPP.dwg, 455+00 - 467+00, 3/21/2008 9:47 AM, RPOTTS, 1:1  
 2-10-08 (C:\Users\RPOTTS\Documents\2007\CONPLANS\_2007\C-SWPP.dwg)