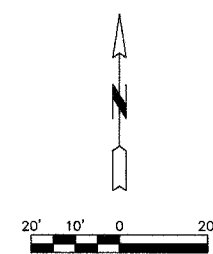
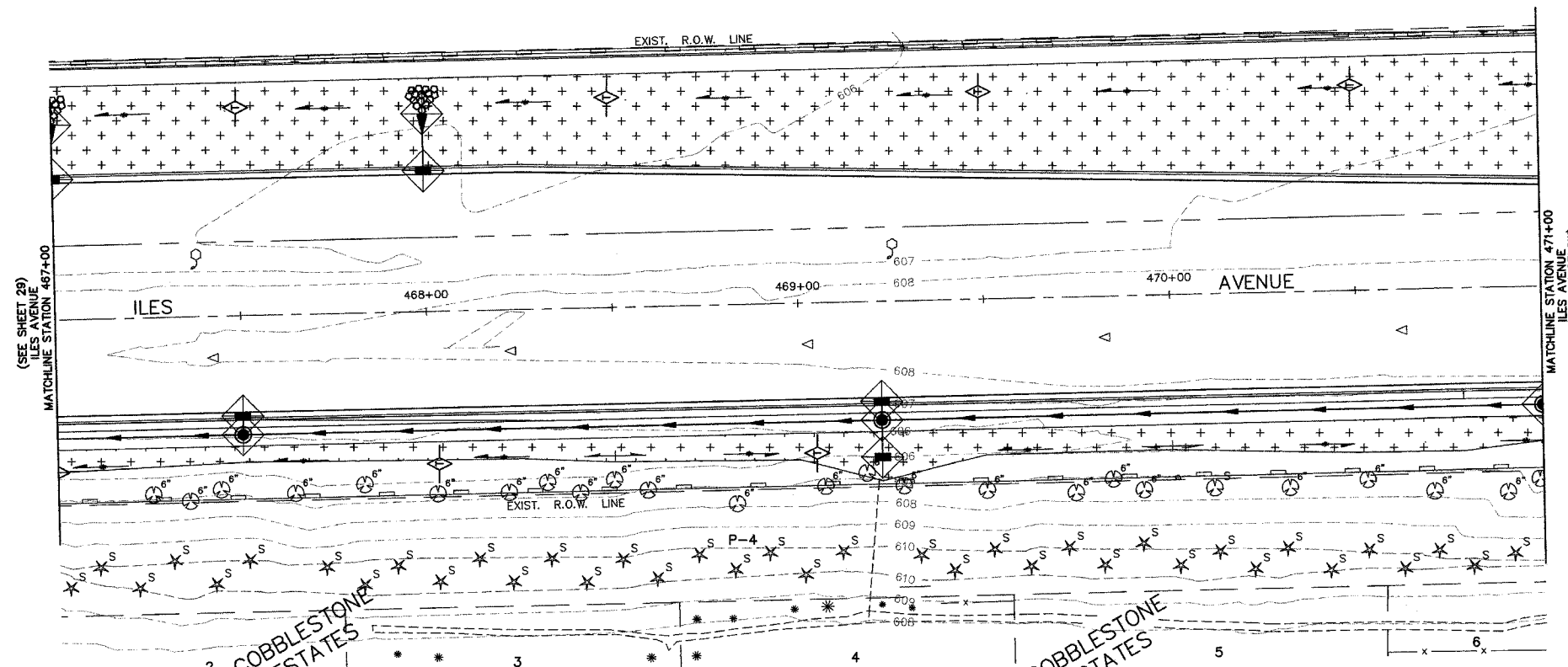


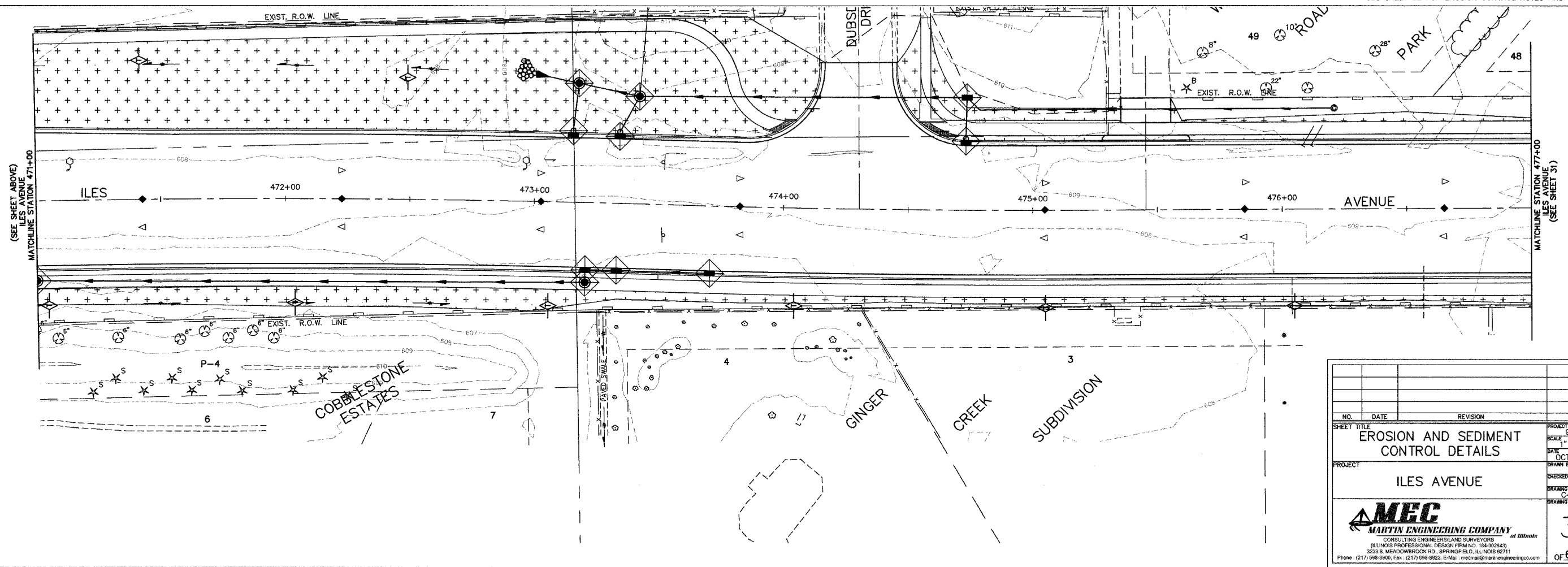
F.A.U. ROUTE	SECTION	COUNTY	TOTAL SHEETS	SHEET NO.
8047	98-00379-00-PV	SANG	66	30
STA. 467+00 TO STA. 477+00				
FED. ROAD DIST. NO.	ILLINOIS	FED. AID PROJECT		



SCHEDULE OF QUANTITIES

PAY ITEM		
TEMPORARY DITCH CHECKS	EACH	15
PERIMETER EROSION BARRIER	FOOT	1924
INLET AND PIPE PROTECTION	EACH	20

SEE SHEET 32 FOR EROSION CONTROL NOTES AND LEGEND



NO.	DATE	REVISION	BY
SHEET TITLE			
EROSION AND SEDIMENT CONTROL DETAILS			
PROJECT			
ILES AVENUE			
MEC MARTIN ENGINEERING COMPANY			
CONSULTING ENGINEERS/LAND SURVEYORS (ILLINOIS PROFESSIONAL DESIGN FIRM NO. 184-302643) 3223 S. MEADOWBROOK RD., SPRINGFIELD, ILLINOIS 62711 Phone: (217) 598-8900, Fax: (217) 598-8922, E-Mail: mecon@martinengineeringco.com			
DRAWING NO.			30
DRAWING NO.			OF 66 SHTS

Attached (if any) sheets of:
 1-Title (to be submitted with plans)
 2-Notes (to be submitted with plans)
 3-Proposed (to be submitted with plans)