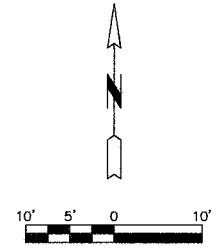
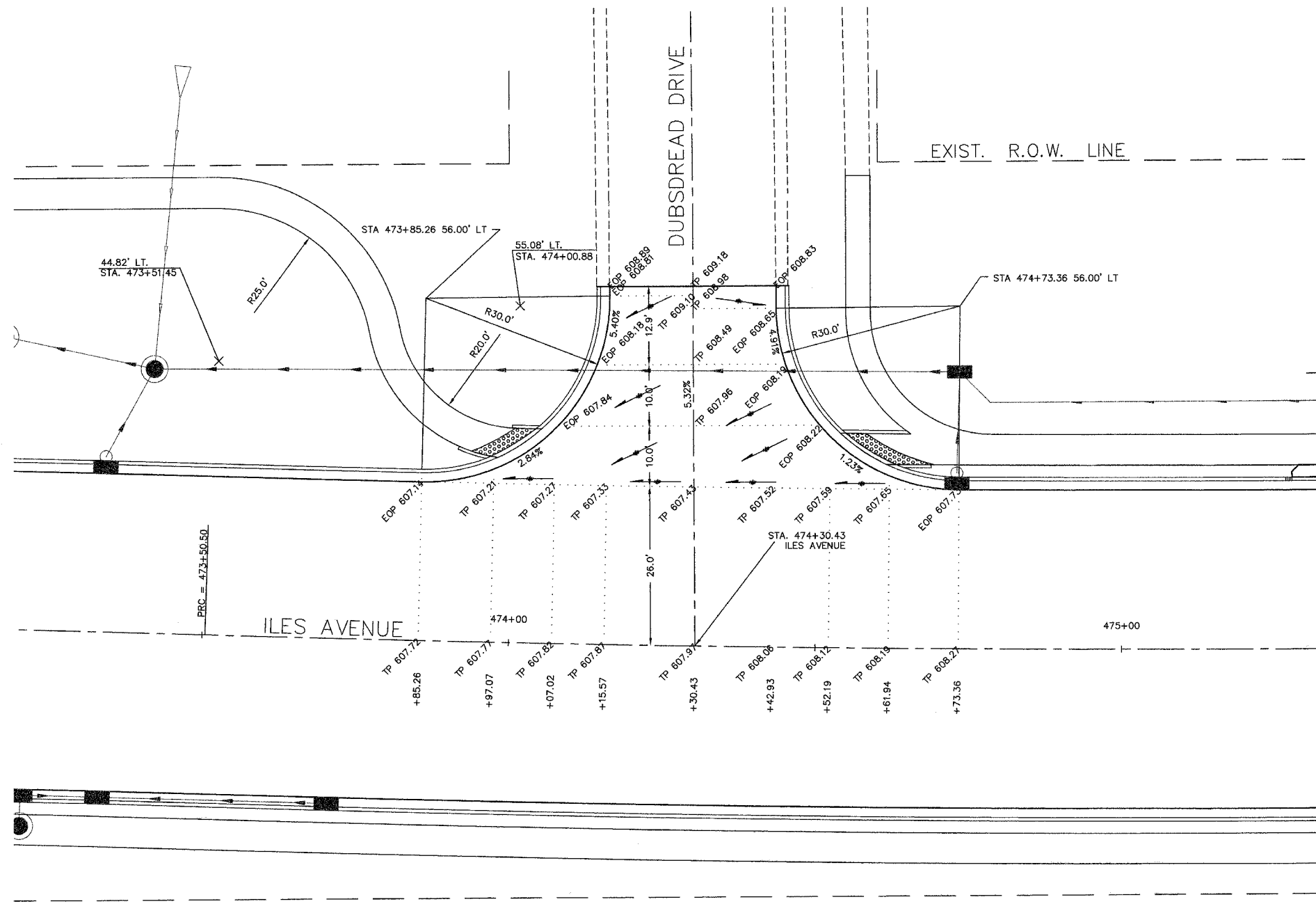


F.A.U. ROUTE	SECTION	COUNTY	TOTAL SHEETS	SHEET NO.
8047	96-00379-00-PV	SANG	66	34
FED. ROAD DIST. NO.		ILLINOIS	FED. AID PROJECT	



**LEGEND**

- TP - TOP OF PAVEMENT
- EOP - EDGE OF PAVEMENT

**NOTES**

1) ALL SPOT ELEVATIONS AND DIMENSIONS THAT REFER TO CURBING REFERENCE THE FACE OF THE CURB (EOP), UNLESS OTHERWISE NOTED.

NO.	DATE	REVISION	BY
SHEET TITLE			PROJECT NO.
INTERSECTION DETAILS			96100
DUBSDREAD DRIVE			SCALE
			1" = 10'
PROJECT			DATE
ILES AVENUE			OCT. 2007
			DRAWN BY
			MEC
			CHECKED BY
			PBW
			DRAWING FILE
			C-INTR
			DRAWING NO.
			34
 <b>MARTIN ENGINEERING COMPANY</b> of Illinois <small>CONSULTING ENGINEERS AND SURVEYORS          (ILLINOIS PROFESSIONAL DESIGN FIRM NO. 154-062843)          3223 S. MEADOWBROOK RD., SPRINGFIELD, ILLINOIS 62711          Phone: (217) 698-8900, Fax: (217) 698-8922, E-Mail: meconia@martinengineeringco.com</small>			OF 66 SHTS