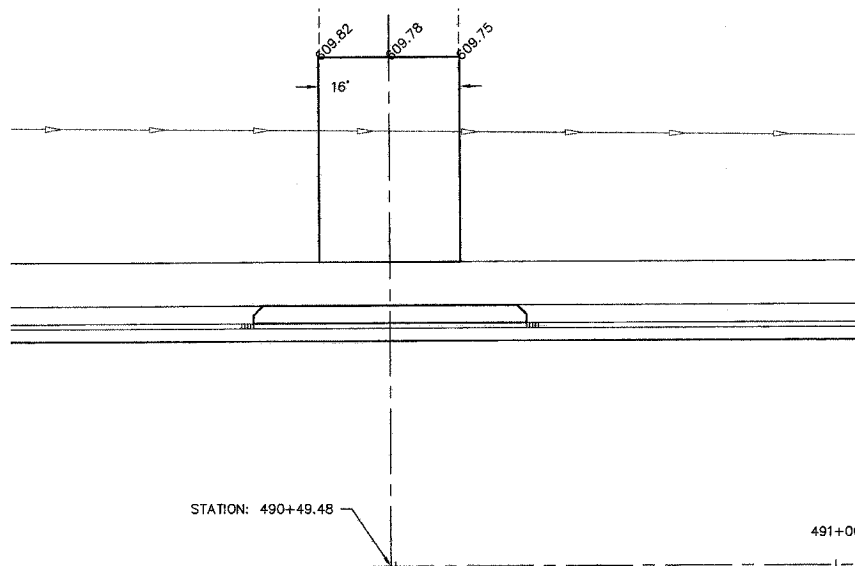
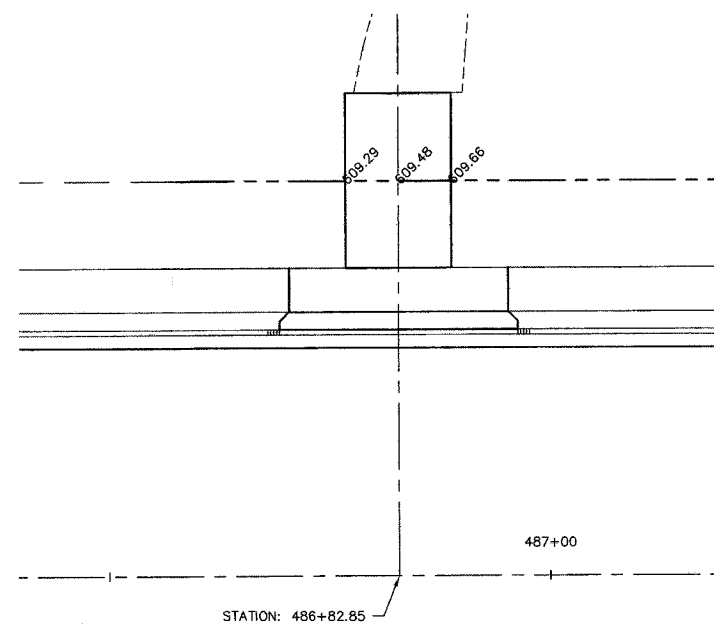
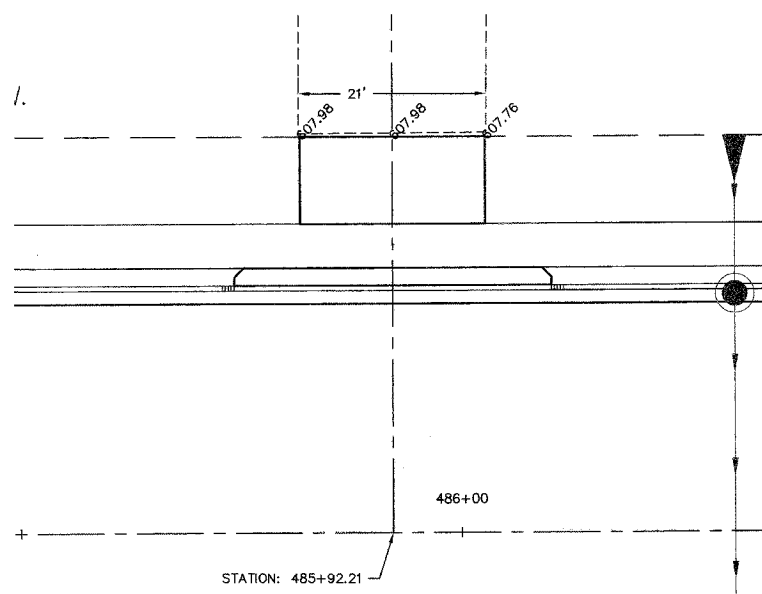
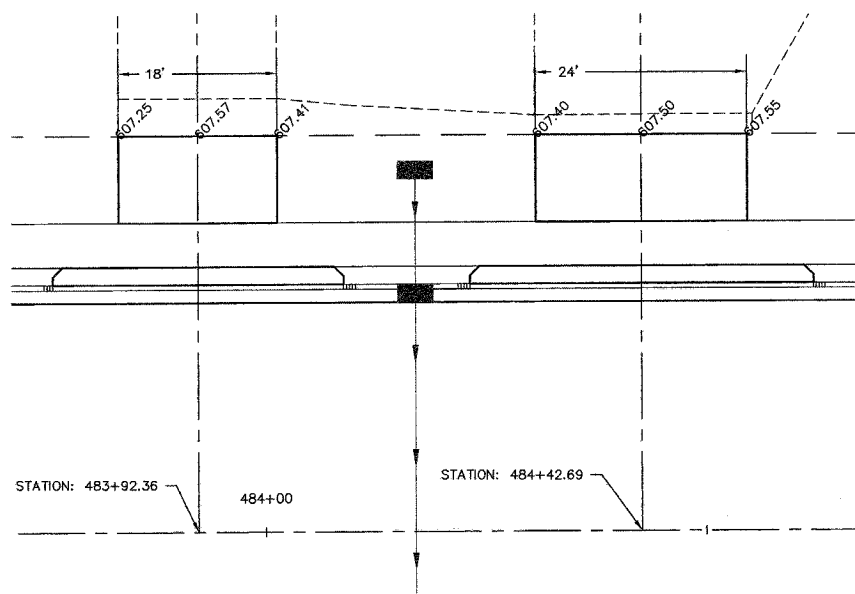
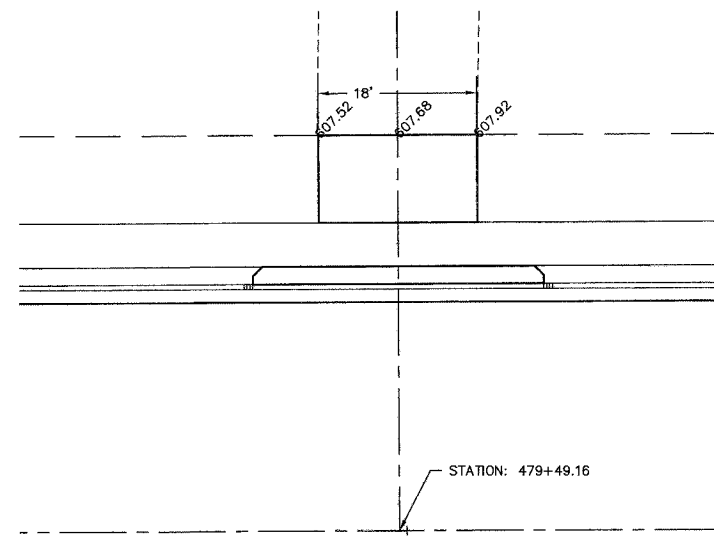
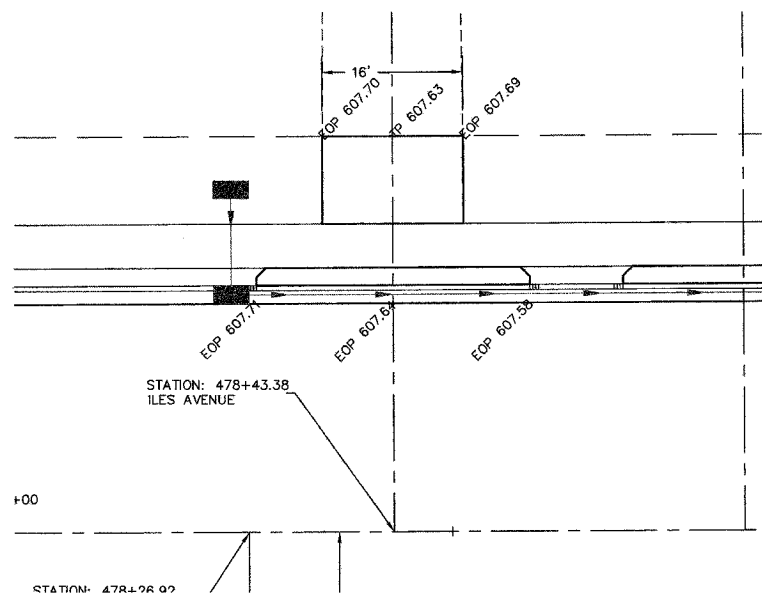
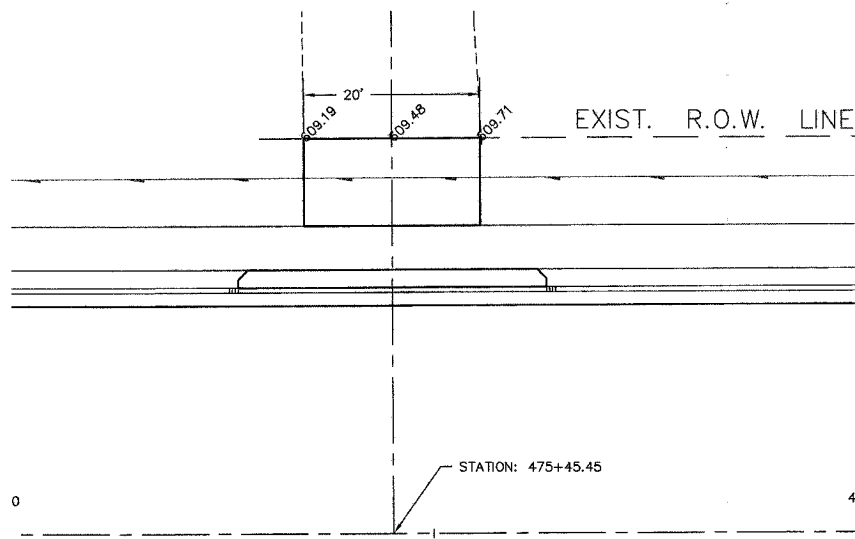
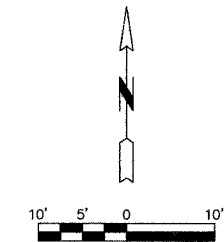


F.A.U. ROUTE	SECTION	COUNTY	TOTAL SHEETS	SHEET NO.
8047	96-00379-00-PV	SANG	66	38
FED. ROAD DIST. NO.	ILLINOIS	FED. AID PROJECT		



SEE TYPICAL DETAIL, SHEET 5

NO.	DATE	REVISION	BY
SHEET TITLE		PROJECT NO.	
INTERSECTION DETAILS		96100	
PRIVATE ENTRANCES		SCALE 1" = 10'	
PROJECT		DATE	
ILES AVENUE		OCT. 2007	
DRAWN BY		CHECKED BY	
MEC		PBW	
DRAWING TITLE		DRAWING NO.	
C-INTR		38	
DRAWING NO.		OF 66 SHTS	
MEC MARTIN ENGINEERING COMPANY of Illinois <small>CONSULTING ENGINEERS/LAND SURVEYORS (ILLINOIS PROFESSIONAL DESIGN FIRM NO. 084-000943) 3223 S. MEADOWBROOK RD., SPRINGFIELD, ILLINOIS 62711 Phone: (217) 698-8900, Fax: (217) 698-8922, E-Mail: mecmail@martinengineeringco.com</small>			