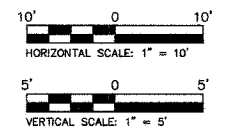
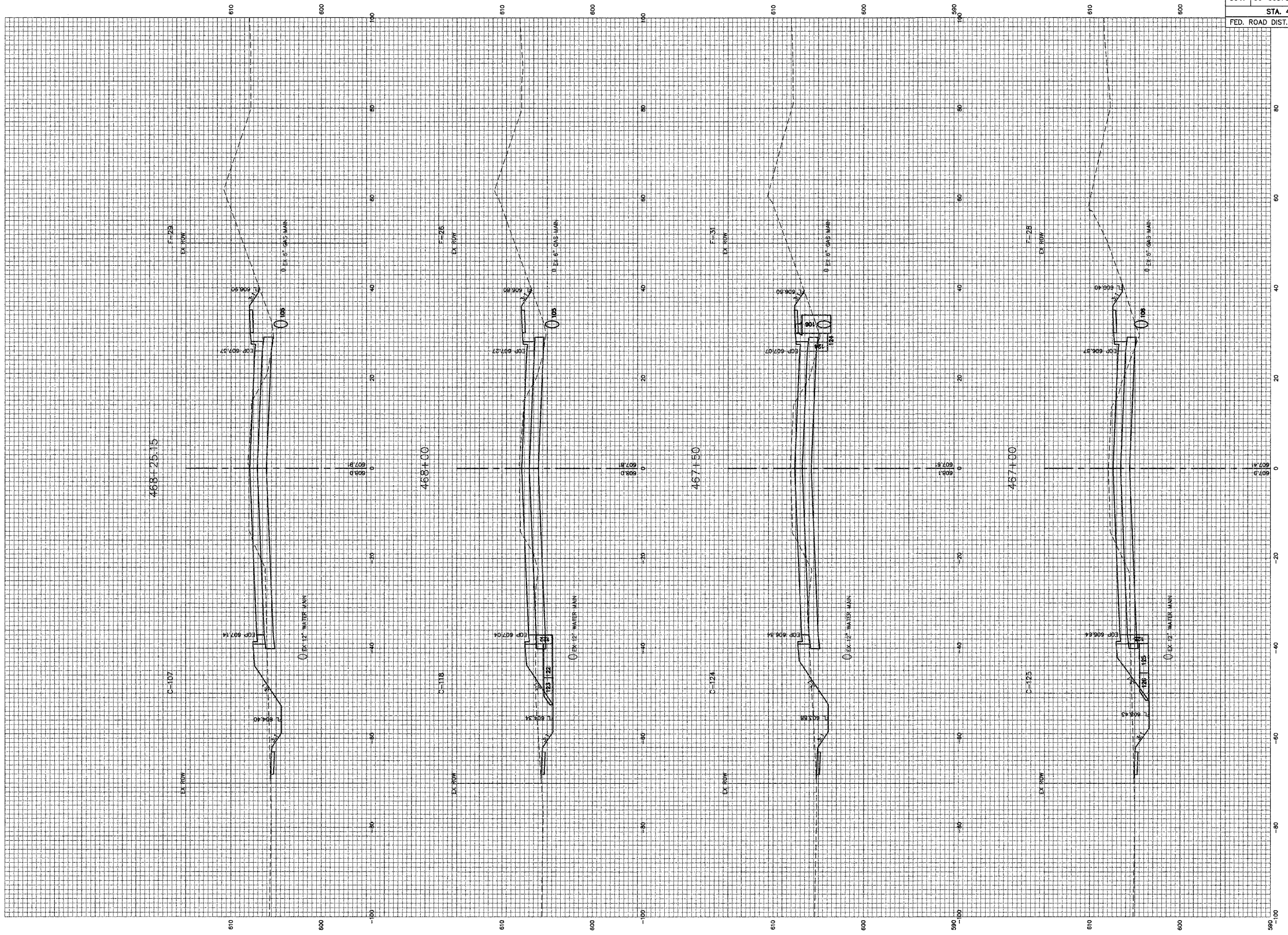


F.A.U. ROUTE	SECTION	COUNTY	TOTAL SHEETS	SHEET NO.
8047	96-00379-00-PV	SANG	66	51
STA. 467+00 TO STA. 468+25.15				
FED. ROAD DIST. NO.		ILLINOIS	FED. AID PROJECT	



ILES AVENUE (FAU 8047) STA. 467+00 TO STA. 468+25.15

Attached 3x6(4) Form 41 -  
X-TBLX (E:\VIA\19100\CONPLANS\_2007\1-18LX.dwg)