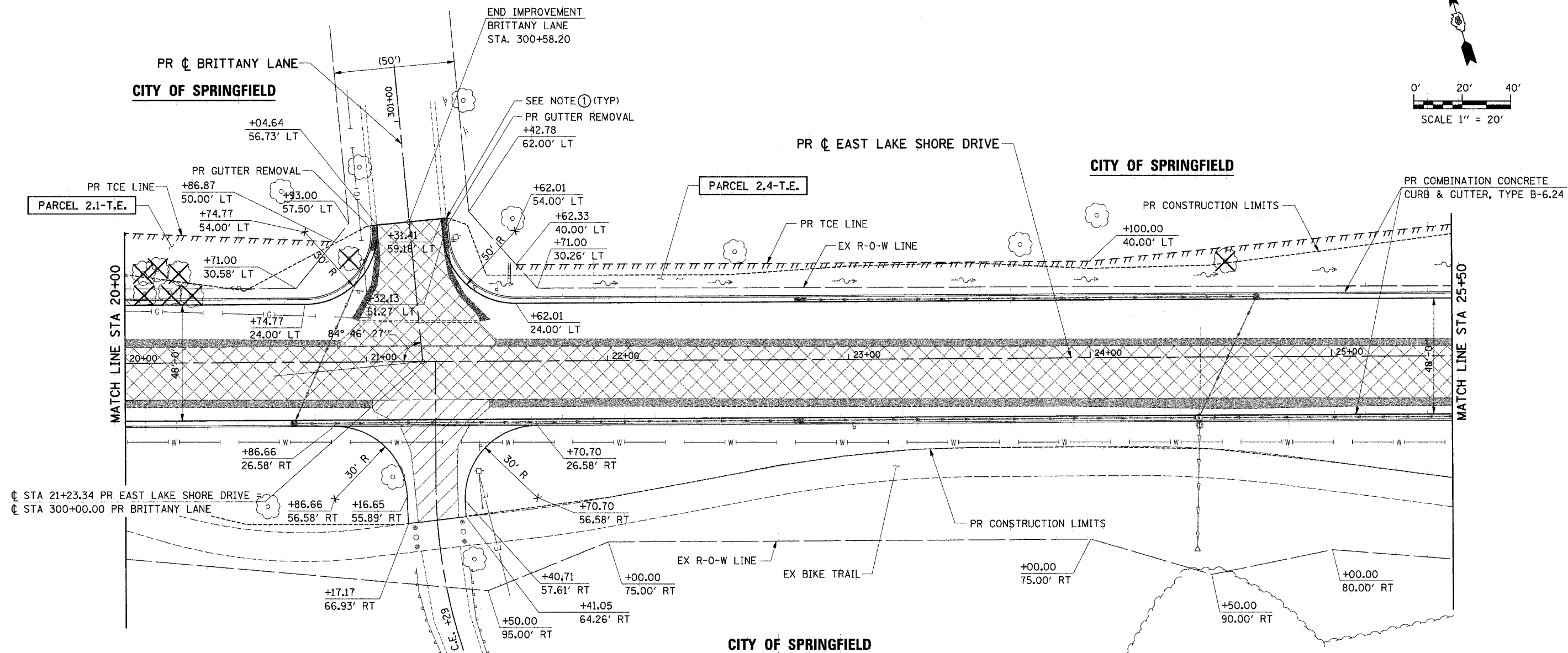
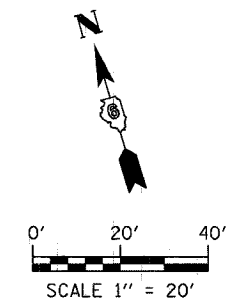

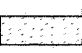
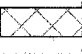
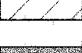



F.A.U.	SECTION	COUNTY	TOTAL SHEETS	SHEET NO.
7998	97-00030-06-WR	SANGAMON	117	26
FED. ROAD DIST. NO.	ILLINOIS	FED. AID PROJECT		



CITY OF SPRINGFIELD

LEGEND

-  PR TREE REMOVAL
-  PR HOT-MIX ASPHALT SURFACE REMOVAL (VARIABLE DEPTH)
-  PR PAVEMENT REMOVAL
-  PR DRIVEWAY PAVEMENT REMOVAL
-  PR PAVED SHOULDER REMOVAL

NOTES

- ① TRANSITION FROM PROPOSED COMBINATION CONCRETE CURB & GUTTER, TYPE B-6.24 TO EXISTING V-GUTTER OVER 10'. TRANSITION SHALL BE PAID FOR AS COMBINATION CONCRETE CURB & GUTTER, TYPE B-6.24

B.M. *3 STA 24+45, 28' RT
CHISELED "□" ON TOP OF RCCP FLARED
END SECTION, S.W. SIDE OF ROAD
ELEV. 584.71



IE CONSULTANTS, INC.
6420 SOUTH SIXTH STREET
SPRINGFIELD, ILLINOIS 62712
TEL. (217) 529-8027
FAX (217) 529-4543
IESPRINGFIELD@IE-CONSULTANTS.COM
WWW.IE-CONSULTANTS.COM

ROADWAY PLAN
STA 20+00 TO STA 25+50

DESIGNED BY: JEB	DRAWN BY: AAD	CHECKED BY: CMS	DATE: 4/4/08
---------------------	------------------	--------------------	-----------------

4/9/2008