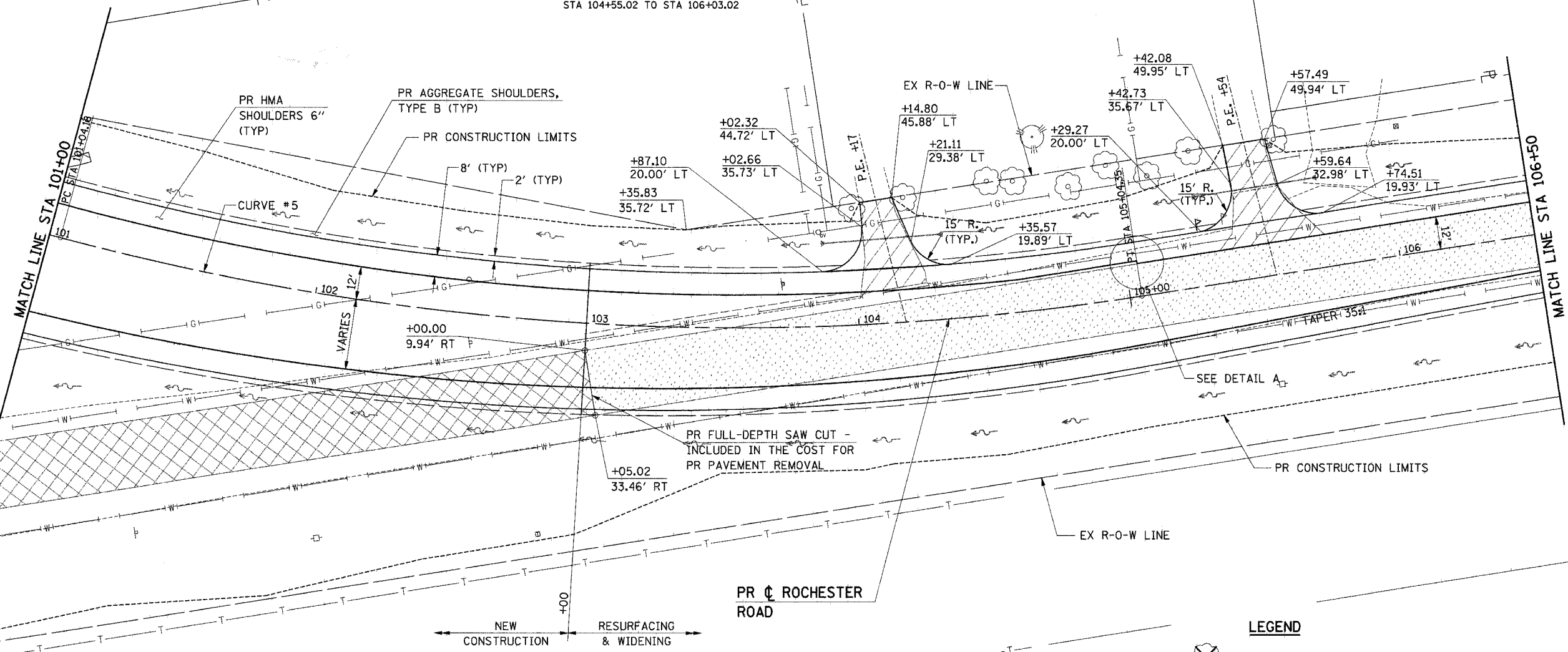
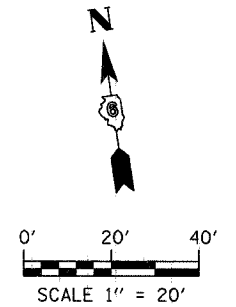
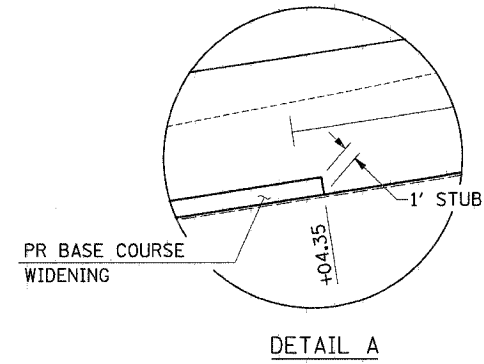


F.A.U.	SECTION	COUNTY	TOTAL SHEETS	SHEET NO.
7998	97-00030-06-WR	SANGAMON	117	44
FED. ROAD DIST. NO.		ILLINOIS	FED. AID PROJECT	

CURVE #5 DATA

PI STA 103+07.24
 $\Delta = 24^\circ 00' 37''$ LT
 $D = 6^\circ 00' 00''$
 $T = 203.07'$
 $R = 954.93'$
 $L = 400.17'$
 $E = 21.35'$
 PC STA 101+04.18
 PT STA 105+04.35
 $SE = 4.4\%$
 SE ATTAINED (108')
 STA 100+32.18 TO STA 101+40.18
 SE REMOVED (148')
 STA 104+55.02 TO STA 106+03.02



- LEGEND**
- PR TREE REMOVAL
 - PR HOT-MIX ASPHALT SURFACE REMOVAL (VARIABLE DEPTH)
 - PR PAVEMENT REMOVAL
 - PR DRIVEWAY PAVEMENT REMOVAL
 - PR PAVED SHOULDER REMOVAL

B.M. #10 STA 105+50, 38' RT
 R.R. SPIKE IN POWER POLE, S. SIDE
 OF ROCH. ROAD, ELEV. 584.95

ie consultants
 IE CONSULTANTS, INC.
 6420 SOUTH SIXTH STREET
 SPRINGFIELD, ILLINOIS 62712
 TEL. (217) 529-8027
 FAX (217) 529-4543
 IESPRINGFIELD@IE-CONSULTANTS.COM
 WWW.IE-CONSULTANTS.COM

**ROADWAY PLAN
 STA 101+00 TO STA 106+50**

DESIGNED BY: JEB	DRAWN BY: AAD	CHECKED BY: CMS	DATE: 4/4/08
---------------------	------------------	--------------------	-----------------

4/9/2008