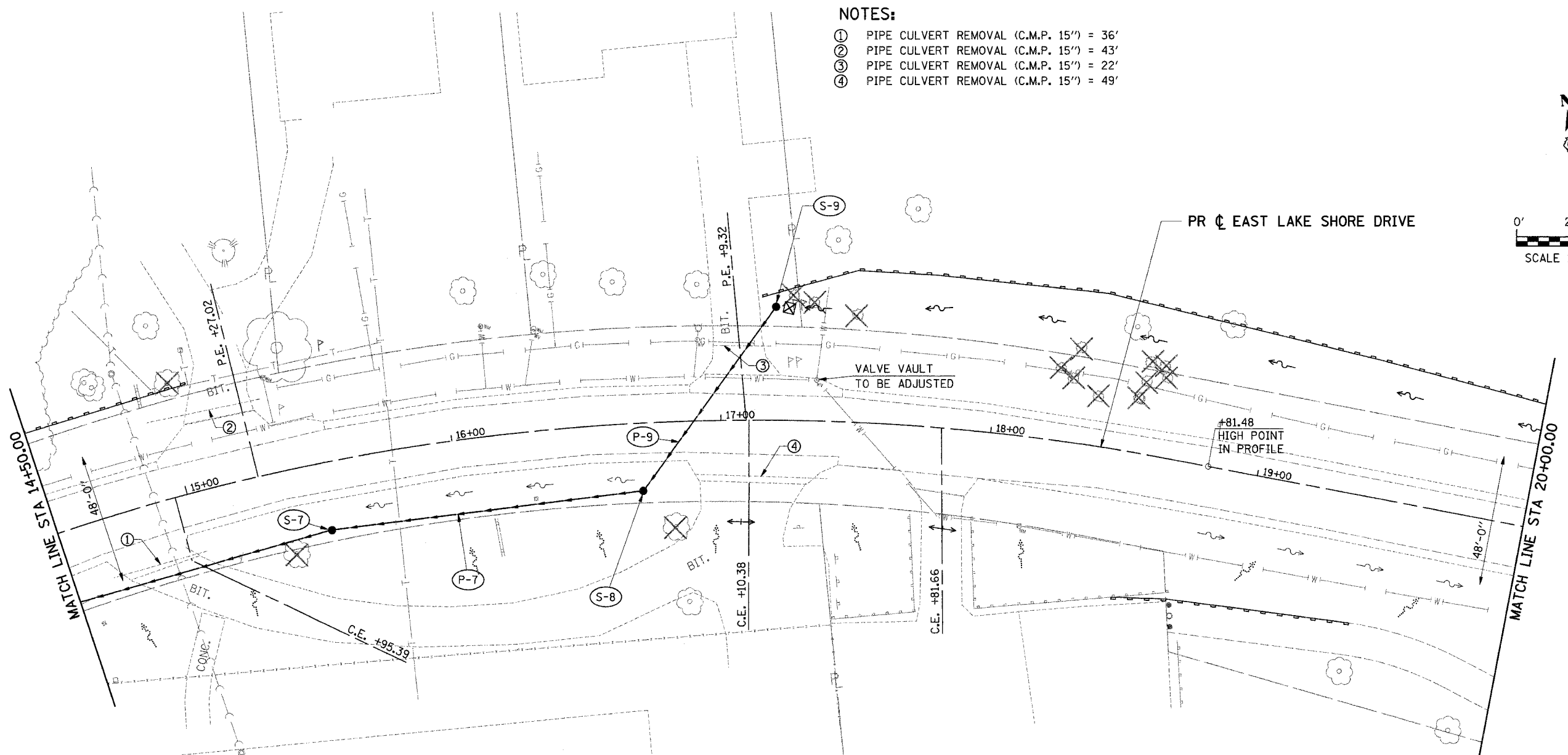
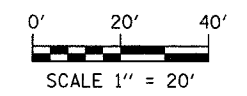


FAU	SECTION	COUNTY	TOTAL SHEETS	SHEET NO.
7998	97-00030-06-WR	SANGAMON	117	61
FED. ROAD DIST. NO.		ILLINOIS	FED. AID PROJECT	

NOTES:

- ① PIPE CULVERT REMOVAL (C.M.P. 15") = 36'
- ② PIPE CULVERT REMOVAL (C.M.P. 15") = 43'
- ③ PIPE CULVERT REMOVAL (C.M.P. 15") = 22'
- ④ PIPE CULVERT REMOVAL (C.M.P. 15") = 49'



- ① STA 15+50, 24.0' RT RD CATCH BASIN, 3' DIA, TYPE 3V FRAME & GRATE
EOP EL = 584.14
INV (E) = 581.10
INV (W) = 581.00
- ② STA 16+70, 24.0' RT RD CATCH BASIN, 3' DIA, TYPE 3V FRAME & GRATE
EOP EL = 586.75
INV (NE) = 583.50
INV (W) = 583.40
- ③ STA 17+20, 42.0' LT CATCH BASIN, TYPE C (2' DIA.)
TYPE 8 GRATE
TOG EL = 587.40
INV (S) = 586.00
- ④ S-7 TO S-8 // 116' @ 1.98%
STORM SEWERS, CLASS A, TYPE 2 12"
- ⑤ S-8 TO S-9 // 80' @ 3.12%
STORM SEWERS, CLASS A, TYPE 1 12"

EROSION/SEDIMENT LEGEND

- ◇ TEMPORARY DITCH CHECK
- ⊕ INLET & PIPE PROTECTION
- PERIMETER EROSION BARRIER
- ⇄ EX DITCH SUMMIT
- ⇄ PR DITCH SUMMIT
- ~ EX FLOW LINE
- ~ PR FLOW LINE
- PR SWALE
- ~ EX SHEET FLOW
- ~ PR SHEET FLOW
- ⊞ PR RIP RAP

STORM LEGEND

- INLET
- CATCH BASIN
- MANHOLE
- STORM SEWER
- ◄ FLARED END SECTION

ie
consultants

IE CONSULTANTS, INC.
6420 SOUTH SIXTH STREET
SPRINGFIELD, ILLINOIS 62712
TEL. (217) 529-8027
FAX (217) 529-4543
IESPRINGFIELD@IE-CONSULTANTS.COM
WWW.IE-CONSULTANTS.COM

**DRAINAGE PLAN
STA 14+50 TO STA 20+00**

DESIGNED BY: JEB	DRAWN BY: AAD	CHECKED BY: CMS	DATE: 4/4/08
---------------------	------------------	--------------------	-----------------