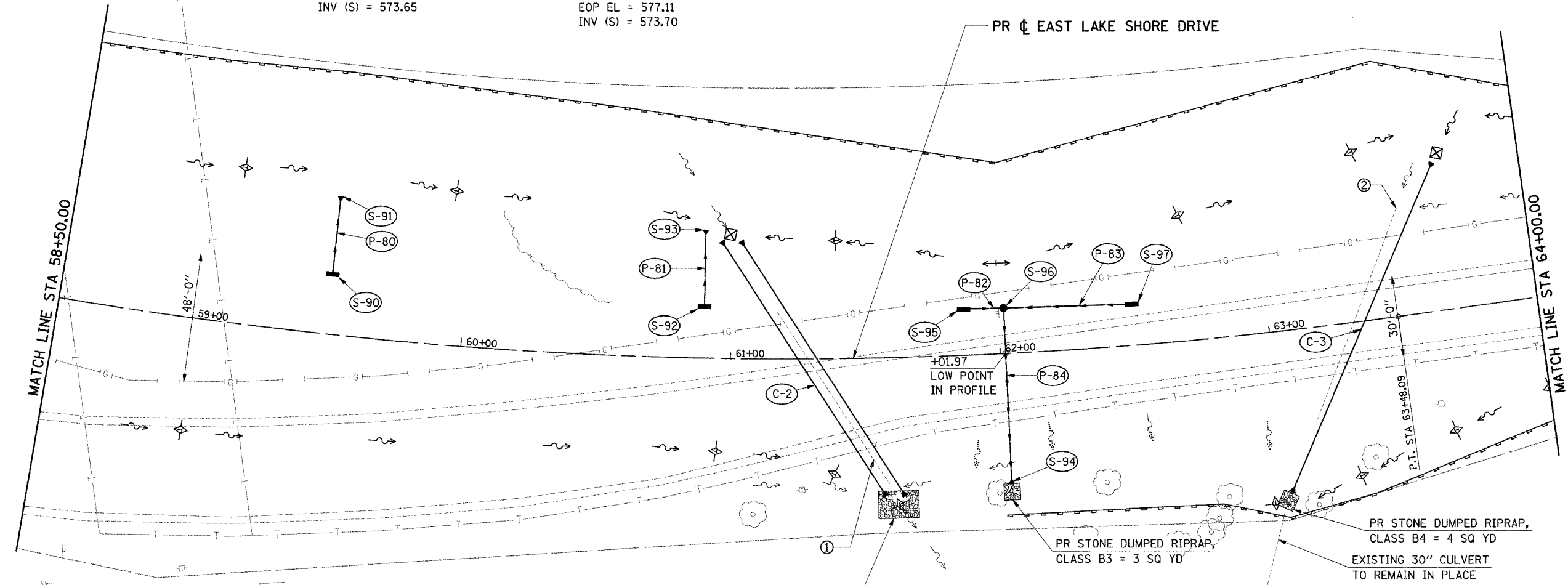
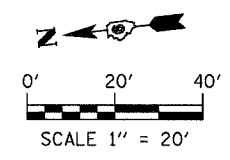


FAU	SECTION	COUNTY	TOTAL SHEETS	SHEET NO.
7998	97-00030-06-WR	SANGAMON	117	69
FED. ROAD DIST. NO.		ILLINOIS	FED. AID PROJECT	

- (S-90) STA 59+50, 21.0' LT INLETS, TYPE A, TYPE 3V FRAME & GRATE
EOP EL = 579.90
INV (E) = 575.80
- (S-91) STA 59+50, 51.0' LT PRECAST REINFORCED CONCRETE FLARED END SECTIONS 12"
INV = 575.25
- (S-92) STA 60+90, 17.9' LT INLETS, TYPE A, TYPE 3V FRAME & GRATE
EOP EL = 577.77
INV (S) = 573.65
- (S-93) STA 60+90, 47.2' LT PRECAST REINFORCED CONCRETE FLARED END SECTIONS 12"
INV = 573.10
- (S-94) STA 62+02, 51.0' RT PRECAST REINFORCED CONCRETE FLARED END SECTIONS 12"
INV = 572.70
(END SECTION TAKEN FROM STA 49+00, 28' RT)
- (S-95) STA 61+87, 15.7' LT INLETS, TYPE A, TYPE 3V FRAME & GRATE
EOP EL = 577.11
INV (S) = 573.70
- (S-96) STA 62+02, 15.4' LT RD MANHOLE, 4' DIA, TYPE 3V FRAME & GRATE
EOP EL = 577.10
INV (S) = 573.50
INV (N) = 573.50
INV (W) = 573.40
- (S-97) STA 62+50, 14.3' LT INLETS, TYPE A, TYPE 3V FRAME & GRATE
EOP EL = 577.27
INV (N) = 574.00

- NOTES:**
- ① PIPE CULVERT REMOVAL (R.C.P. 24") - 78'
 - ② PIPE CULVERT REMOVAL (R.C.P. 30") - 84'



- (C-2) STA 61+00, 43.0' LT TO STA 61+60, 51.0' RT
2 - PIPE CULVERTS, CLASS A, TYPE 1 EORS 42" - 96" @ 0.85% EACH RUN
PRECAST REINFORCED CONCRETE
FLARED END SECTIONS EORS 42" - 4 EACH
USFL 572.95 @ 43.1' LT, STA 60+96.2
DSFL 572.00 @ 51.1' RT, STA 61+56.7
USFL 572.95 @ 43.3' LT, STA 61+03.6
DSFL 572.00 @ 51.3' RT, STA 61+63.6
- (C-3) STA 63+02, 59.6' RT TO STA 63+68, 54.5' LT
PIPE CULVERTS, CLASS A, TYPE 2 30" - 120" @ 0.76%
PRECAST REINFORCED CONCRETE
FLARED END SECTIONS 30" - 2 EACH
USFL 571.50 @ 54.5' LT, STA 63+68.0
DSFL 570.50 @ 59.6' RT, STA 63+02.0
- (P-80) S-90 TO S-91 // 22' @ 2.00%
STORM SEWERS, CLASS A, TYPE 1 12"
- (P-81) S-92 TO S-93 // 22' @ 2.00%
STORM SEWERS, CLASS A, TYPE 1 12"
- (P-82) S-95 TO S-96 // 15' @ 1.33%
STORM SEWERS, CLASS A, TYPE 2 12"
- (P-83) S-97 TO S-96 // 48' @ 1.04%
STORM SEWERS, CLASS A, TYPE 2 12"
- (P-84) S-96 TO S-94 // 60' @ 1.05%
STORM SEWERS, CLASS A, TYPE 2 12"

- EROSION/SEDIMENT LEGEND**
- ◇ TEMPORARY DITCH CHECK
 - ⊕ INLET & PIPE PROTECTION
 - PERIMETER EROSION BARRIER
 - ↔ EX DITCH SUMMIT
 - ↔ PR DITCH SUMMIT
 - EX FLOW LINE
 - PR FLOW LINE
 - PR SWALE
 - EX SHEET FLOW
 - PR SHEET FLOW
 - ▨ PR RIP RAP

- STORM LEGEND**
- ▬ INLET
 - CATCH BASIN
 - MANHOLE
 - STORM SEWER
 - ◀ FLARED END SECTION

ie consultants
IE CONSULTANTS, INC.
6420 SOUTH SIXTH STREET
SPRINGFIELD, ILLINOIS 62712
TEL. (217) 529-8027
FAX (217) 529-4543
IESPRINGFIELD@IE-CONSULTANTS.COM
WWW.IE-CONSULTANTS.COM

DRAINAGE PLAN
STA 58+50 TO STA 64+00

DESIGNED BY: JEB	DRAWN BY: AAD	CHECKED BY: CMS	DATE: 4/4/08
---------------------	------------------	--------------------	-----------------