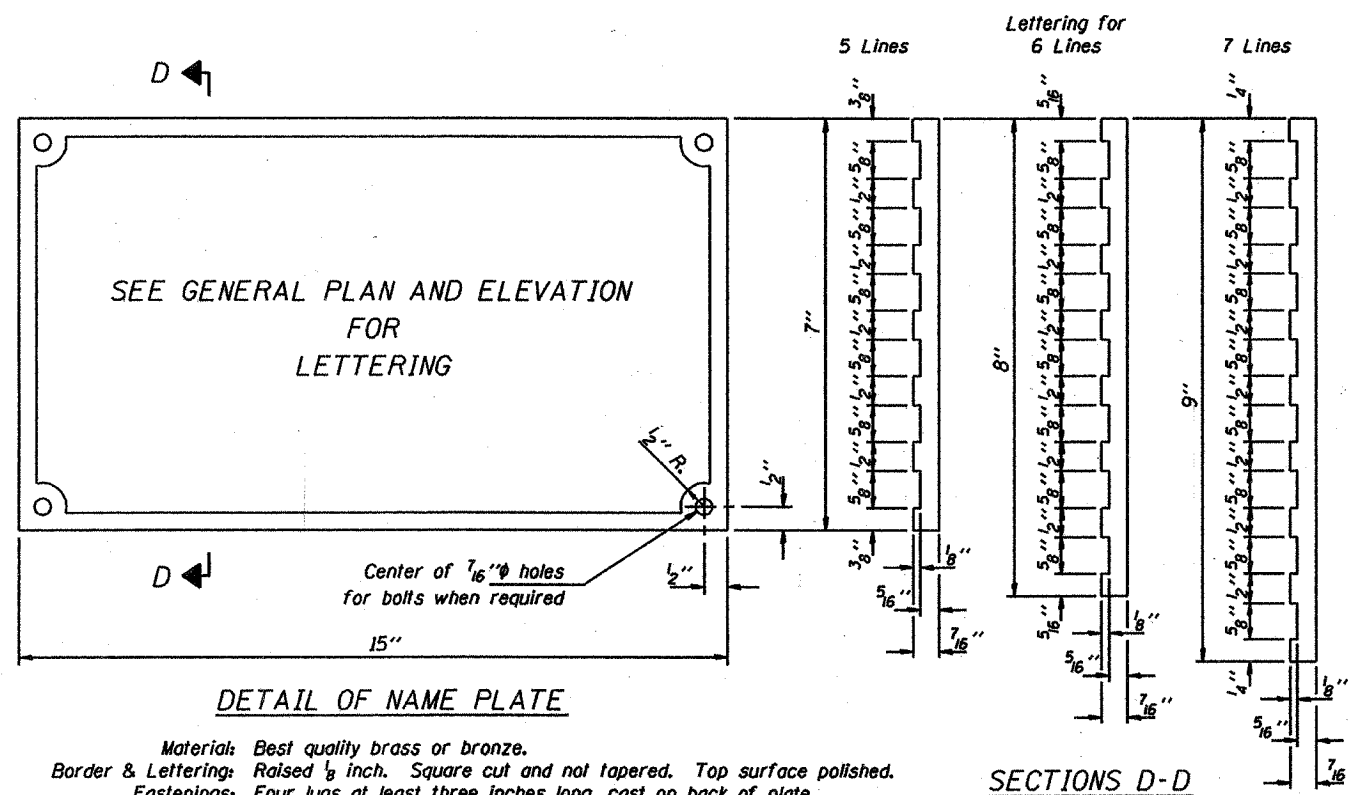
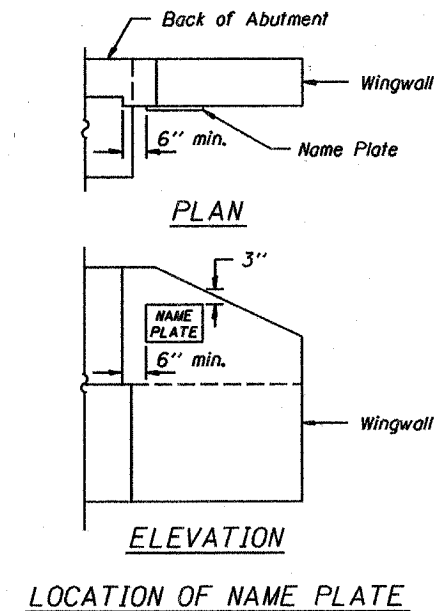


RTE.	SECTION	COUNTY	TOTAL SHEETS	SHEET NO.
T.R. 320	*	SHELBY	15	13
PROJECT BROS-173(149)				
* 03-15127-00-BR				



Material: Best quality brass or bronze.
 Border & Lettering: Raised $\frac{1}{8}$ inch. Square cut and not tapered. Top surface polished.
 Fastenings: Four lugs at least three inches long, cast on back of plate.



Illinois Department of Transportation

PASSED APRIL 4, 2005

Thomas J. Demagala
 Engineer of Bridge Design

APPROVED APRIL 4, 2005

Ralph E. Anderson
 Engineer of Bridges and Structures

ISSUED 7-1-1995

NAME PLATE
STANDARD CN