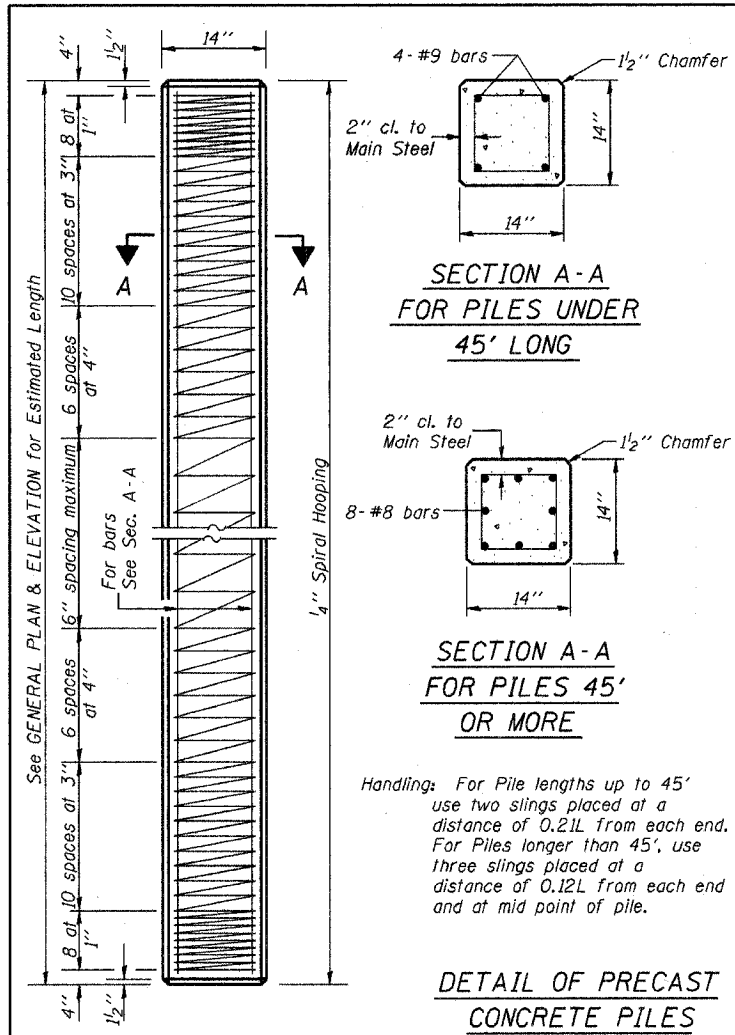
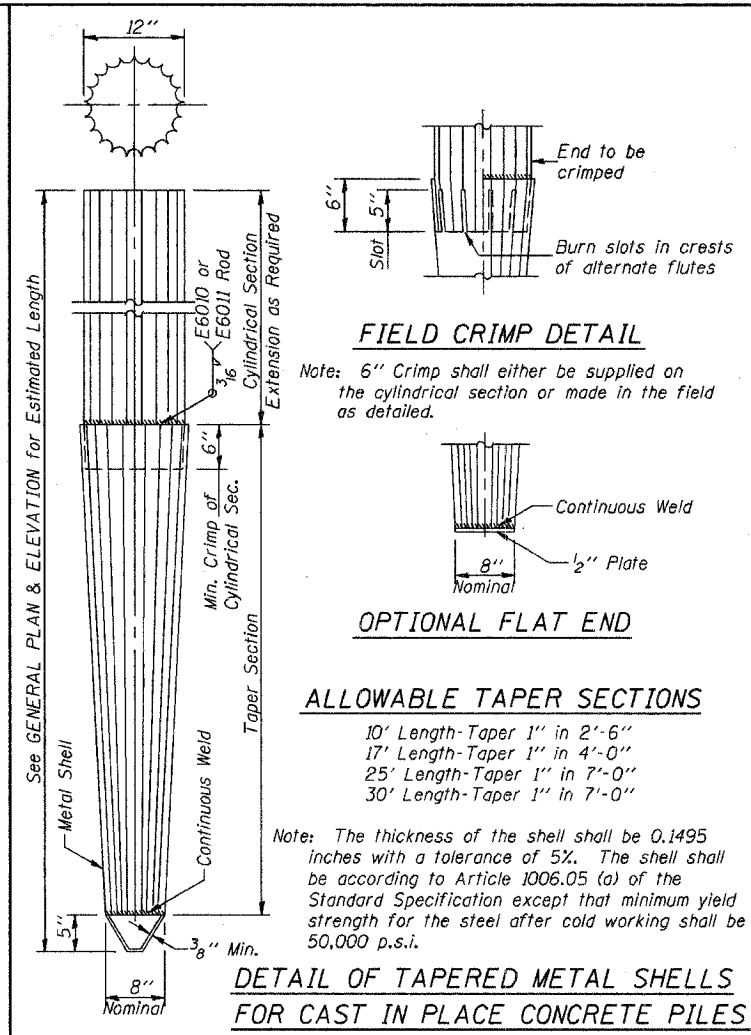


F.S.L. ROUTE NO.	SECTION	COUNTY	TOTAL SHEETS	SHEET
	05-08133-00-82	LAWRENCE	10	10
STA.	TO STA.			
FED. ROAD DIST. NO.	ILLINOIS	PROJECT		

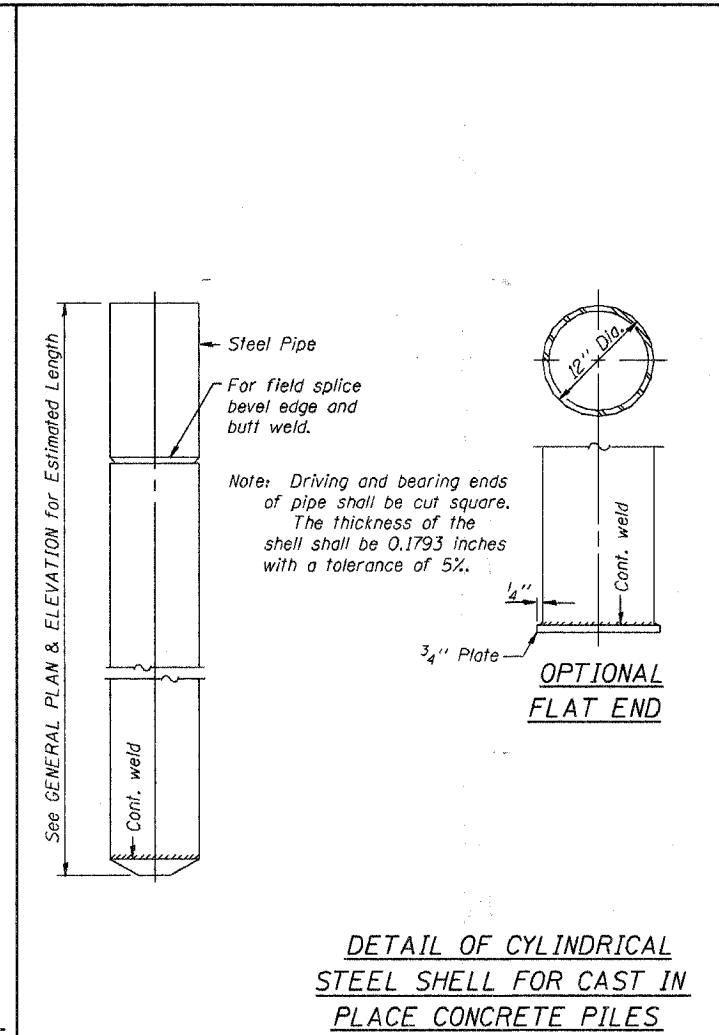


Handlings: For Pile lengths up to 45' use two slings placed at a distance of 0.21L from each end. For Piles longer than 45', use three slings placed at a distance of 0.12L from each end and at mid point of pile.

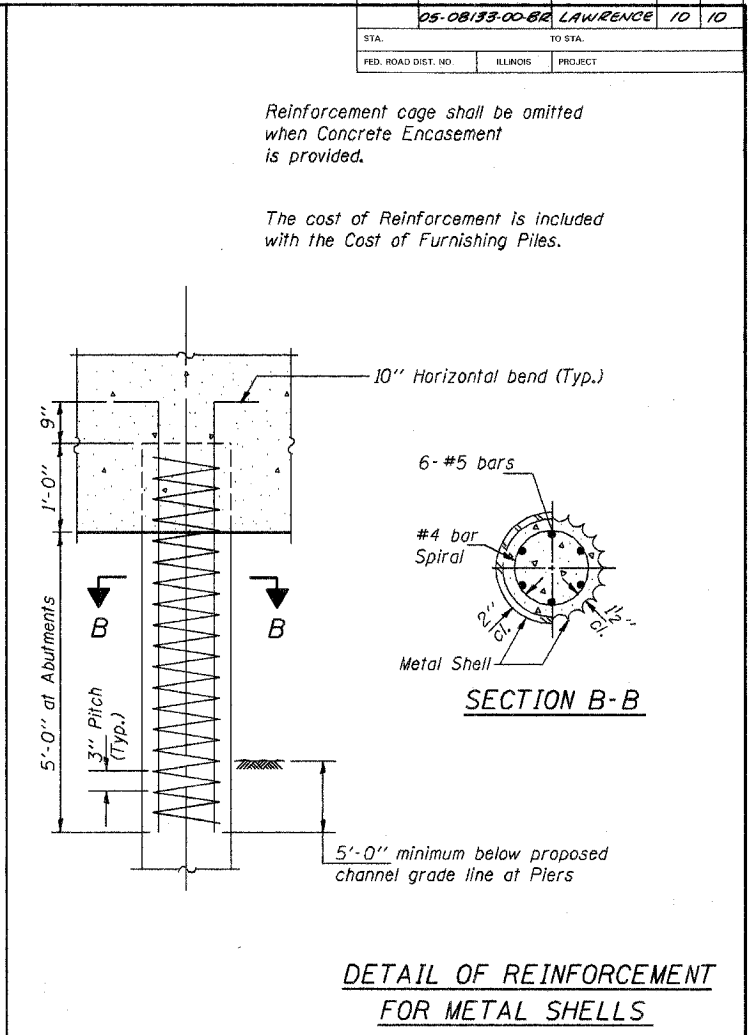
DETAIL OF PRECAST CONCRETE PILES



DETAIL OF TAPERED METAL SHELLS FOR CAST IN PLACE CONCRETE PILES



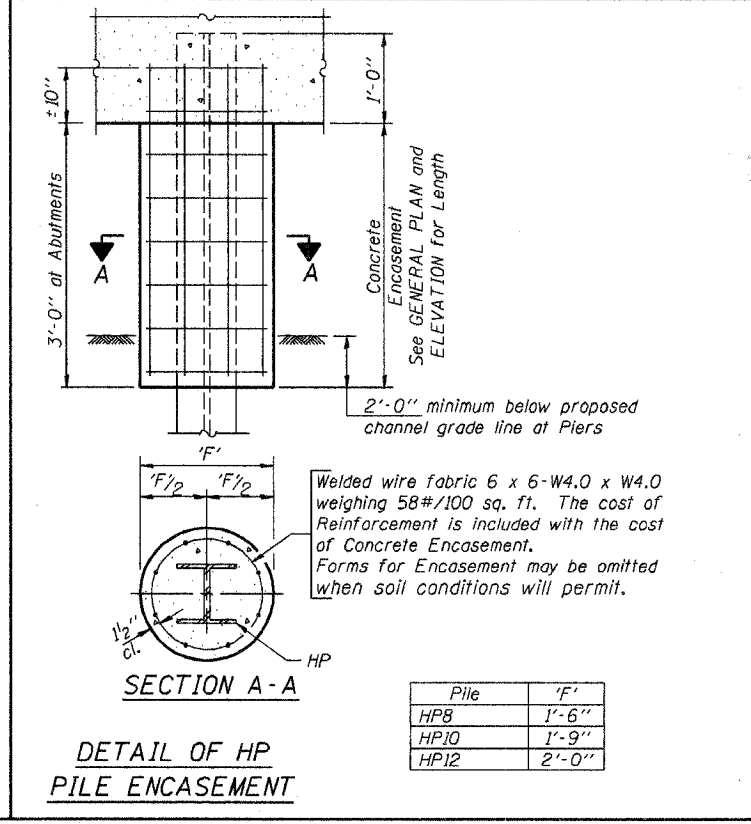
DETAIL OF CYLINDRICAL STEEL SHELL FOR CAST IN PLACE CONCRETE PILES



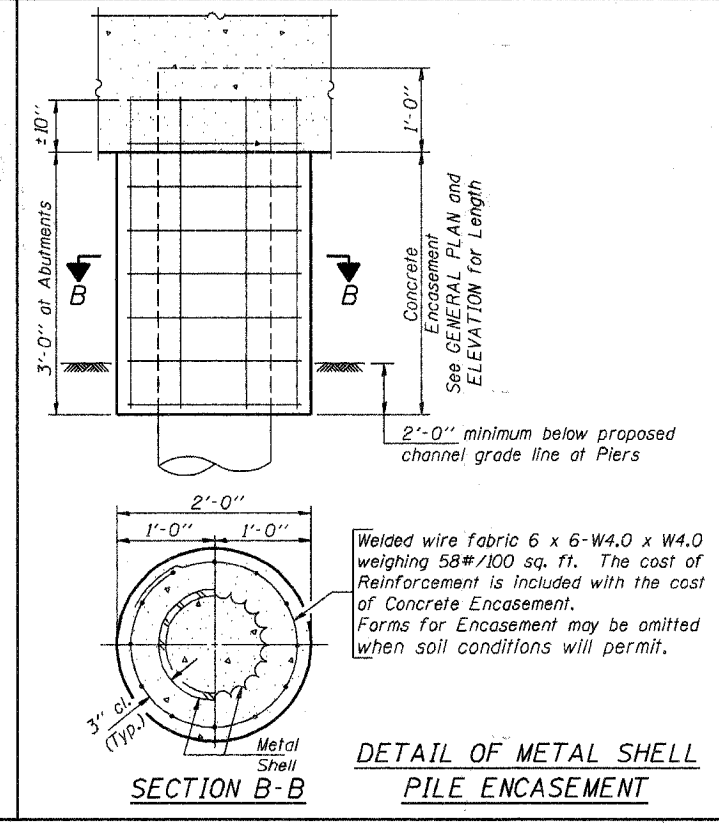
Reinforcement cage shall be omitted when Concrete Encasement is provided.

The cost of Reinforcement is included with the Cost of Furnishing Piles.

DETAIL OF REINFORCEMENT FOR METAL SHELLS



DETAIL OF HP PILE ENCASEMENT



DETAIL OF METAL SHELL PILE ENCASEMENT

QUANTITIES/FT. OF ENCASEMENT (STEEL PILES)

Pile Size	Item	Quantity
HP8	Concrete Encasement	0.063 C.Y.
HP10	Concrete Encasement	0.086 C.Y.
HP12	Concrete Encasement	0.112 C.Y.

(METAL SHELL PILES)

Pile Size	Item	Quantity
12" Dia.	Concrete Encasement	0.087 C.Y.

PILE DETAILS

STANDARD CX-1

Illinois Department of Transportation

PASSED FEBRUARY 1, 2000

Thomas J. Donaghy
Engineer of Bridge Design

APPROVED FEBRUARY 1, 2000

Ralph E. Anderson
Engineer of Bridges and Structures

1585-1-03155