

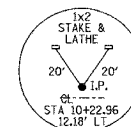
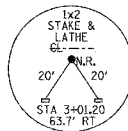
GENERAL NOTES:

THIS SECTION SHALL BE CONSTRUCTED IN ACCORDANCE WITH THE PLANS, SPECIAL PROVISIONS AND "STANDARD SPECIFICATIONS FOR ROAD AND BRIDGE CONSTRUCTION", ADOPTED JANUARY 1, 2007.

THE WORK INVOLVED ON THIS SECTION CONSISTS OF THE REMOVAL OF THE EXISTING STRUCTURE, THE CONSTRUCTION OF A 80 FOOT LONG TRIPLE SPAN PRECAST, PRESTRESSED CONCRETE DECK BEAM BRIDGE, EARTH APPROACHES, AGGREGATE SURFACE COURSE AND OTHER MISCELLANEOUS ITEMS NECESSARY TO COMPLETE THIS SECTION.

ALL ELEVATIONS ARE BASED ON U.S.G.S. MEAN SEA LEVEL DATUM.

IT SHALL BE THE CONTRACTOR'S RESPONSIBILITY TO CONTACT ALL THE UTILITIES, AFFECTING THE PROJECT, PRIOR TO CONSTRUCTION.



T.R.	SECTION	COUNTY	TOTAL SHEETS	SHEET NO.
31	06-02116-00-BR	EDWARDS	12	2

323 W. 3RD ST.
P.O. BOX 160
MT. CARMEL, IL
62863
PHONE:
(618)-262-8651
FAX:
(618)-263-3327

405 W. STATE ST.
SUITE 1
PRINCETON, IN
47670
PHONE:
(812)-386-7611
FAX:
(812)-385-2812



PROFESSIONAL DESIGN FIRM
LAND SURVEY & PROFESSIONAL ENGINEERING CORPORATION
184-000877
(62-032435)(95-002769)



AARON M. MEFFORD
NAME
SIGNATURE
3-17-08
DATE
11-30-09 EXPIRES

TOWNSHIP ROUTE 31
OVER SUGAR CREEK
EDWARDS COUNTY, ILLINOIS

SHEET TITLE:

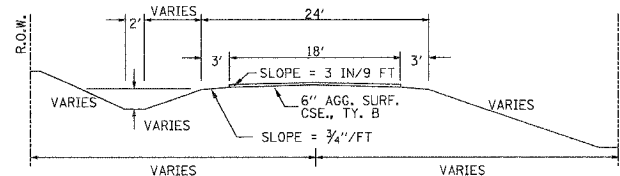
PLAN & PROFILE

SCALE:	VARIES
BY:	AMM
DATE:	3/16/08
REV:	

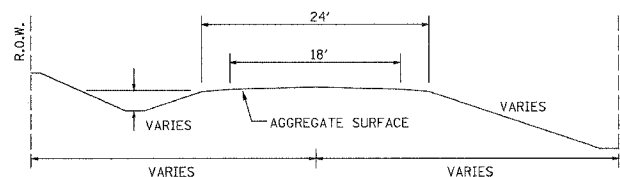
2 OF 12 SHEETS

SHEET NO. 2

TYPICAL CROSS SECTION PROPOSED



TYPICAL CROSS SECTION EXISTING



UTILITIES:

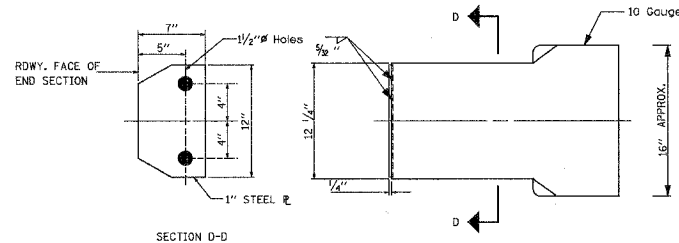
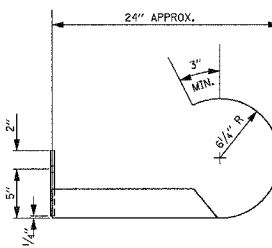
JULL.T.E. 1-800-892-0123

VERIZON
618-395-6189

WAYNE-WHITE ELECTRIC CO-OP
618-842-2196

ELLERY WATER CORP.
618-445-2858

CURLED END SECTION DETAIL



ALL OTHER STEEL SHAPES AND PLATES SHALL CONFORM TO THE REQUIREMENTS OF A.A.S.H.T.O. DESIGNATION M-183 EXCEPT POSTS AND ANGLES SHALL CONFORM TO A.A.S.H.T.O. M-223, GRADE 50.

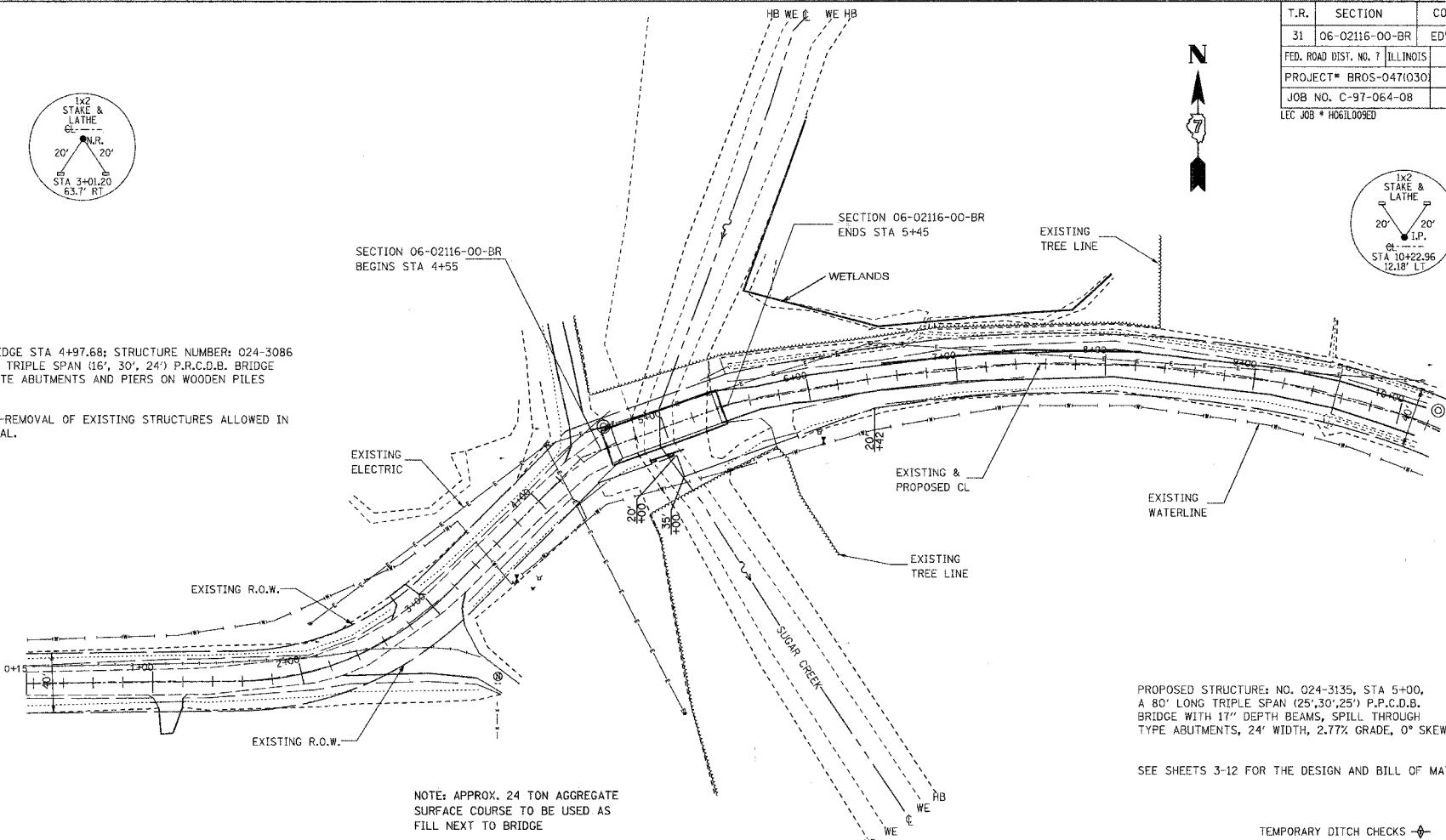
BOLTS, CAP SCREWS, AND NUTS SHALL CONFORM TO THE REQUIREMENT OF A.S.T.M. DESIGNATION A-307 EXCEPT FOR HIGH STRENGTH BOLTS, NUTS, AND WASHERS NOTED WHICH SHALL CONFORM TO A.A.S.H.T.O. DESIGNATION M-164.

ALL BOLTS, NUTS, CAP SCREWS, WASHERS, AND LOCK WASHERS SHALL BE GALVANIZED IN ACCORDANCE WITH A.A.S.H.T.O. DESIGNATION M-232.

ALL FIELD DRILLED HOLES SHALL BE COATED WITH AN APPROVED ZINC RICH PAINT BEFORE ERECTION.

EXISTING BRIDGE STA 4+97.68; STRUCTURE NUMBER: 024-3086
A 71.6' LONG TRIPLE SPAN (16', 30', 24') P.P.C.D.B. BRIDGE WITH CONCRETE ABUTMENTS AND PIERS ON WOODEN PILES

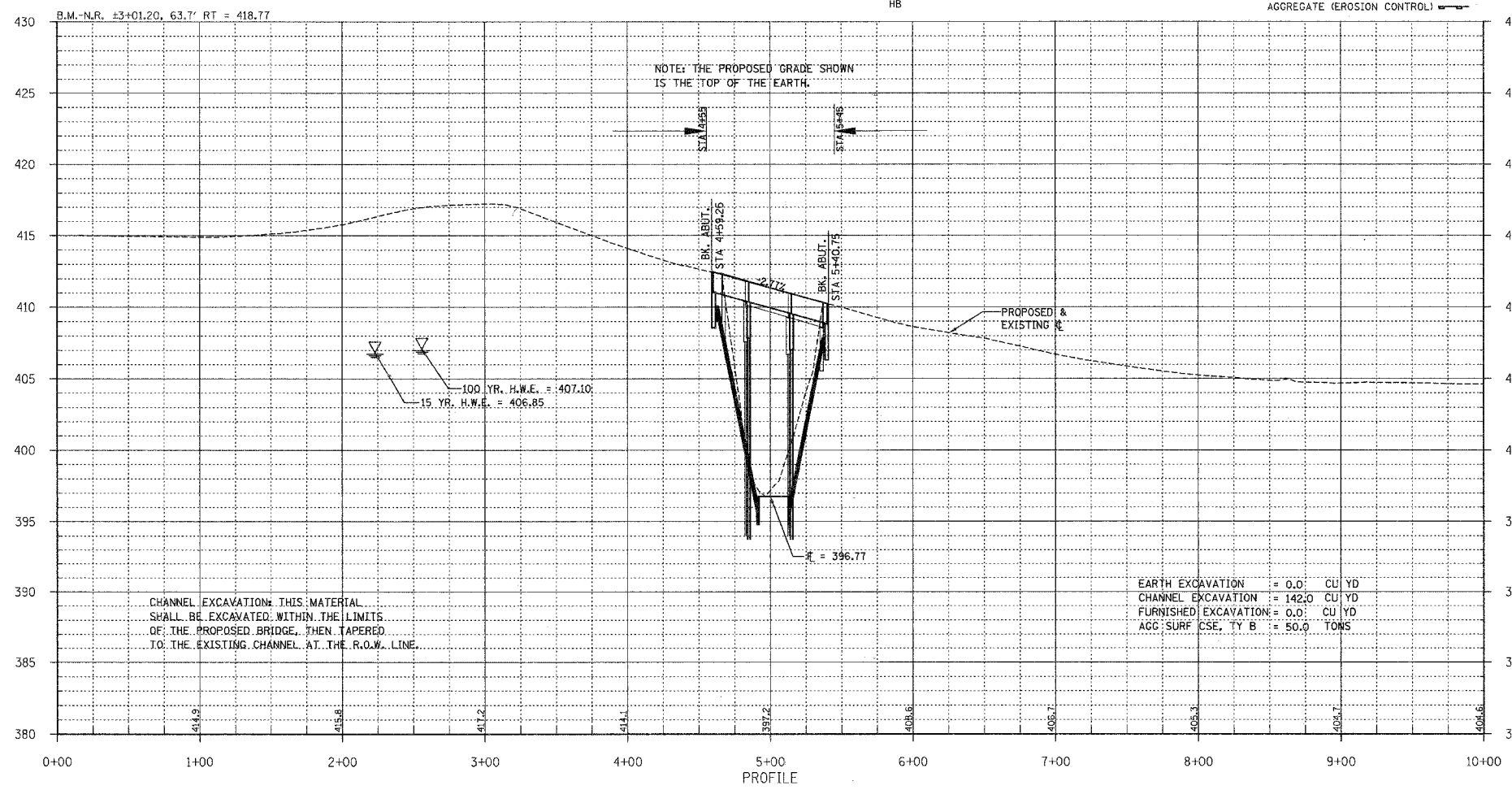
ONE (1) EACH-REMOVAL OF EXISTING STRUCTURES ALLOWED IN THIS PROPOSAL.



NOTE: APPROX. 24 TON AGGREGATE SURFACE COURSE TO BE USED AS FILL NEXT TO BRIDGE

PROPOSED STRUCTURE: NO. 024-3135, STA 5+00, A 80' LONG TRIPLE SPAN (25', 30', 25') P.P.C.D.B. BRIDGE WITH 17" DEPTH BEAMS, SPILL THROUGH TYPE ABUTMENTS, 24' WIDTH, 2.77% GRADE, 0° SKEW.

SEE SHEETS 3-12 FOR THE DESIGN AND BILL OF MATERIALS.



CHANNEL EXCAVATION: THIS MATERIAL SHALL BE EXCAVATED WITHIN THE LIMITS OF THE PROPOSED BRIDGE, THEN TAPERED TO THE EXISTING CHANNEL AT THE R.O.W. LINE.