

ROUTE NO.	SECTION	COUNTY	TOTAL SHEETS	SHEET NO.
90-0000	-01-PP	ST. CLAIR	09	19

FED. ROAD DIST. NO. 8 ILLINOIS FED. AID PROJECT- PLAN SHEET

CONTRACT NO. 97312

EOP 2CC 2-1  
 TC STA 105+74.63  
 TC OFFSET 30.00' L  
 R = 375' L = 99.22'  
 CC STA 106+70.79  
 CC OFFSET 45.35' L  
 R = 70' L = 85.88'  
 CT STA 107+17.22  
 CT OFFSET 110.09' L

EOP 2CC 2-2  
 TC STA 107+62.57  
 TC OFFSET 201.80' L  
 R = 400' L = 110.00'  
 CC STA 107+79.77  
 CC OFFSET 93.48'  
 R = 70' L = 88.07'  
 CT STA 108+46.03  
 CT OFFSET 45.00' L

C/L CURVE EX CM-5  
 MOUSSETTE LANE (EAST)  
 PC = 45+96.01  
 PT = 49+98.65  
 PI = 47+91.85  
 Δ = 3212' 42"  
 D = 8'00" 00"  
 T = 206.80'  
 L = 402.64'  
 R = 716.20'  
 e = .067'  
 SUPER ELEVATION ATTAINED:  
 STA 51+45.33 TO STA 49+24.33  
 STA 46+69.34 TO STA 44+49.34

EOP R=70' 2-3  
 TC STA 106+44.92  
 TC OFFSET 30.00' R  
 R = 70' L = 111.49'  
 CT STA 107+18.12  
 CT OFFSET 100.41' R

EOP 2CC 2-4  
 TC STA 107+71.66  
 TC OFFSET 113.87' R  
 R = 70' L = 92.44'  
 CC STA 108+24.03  
 CC OFFSET 45.25' R  
 R = 375' L = 100.00'  
 CT STA 109+22.85  
 CT OFFSET 32.00' R

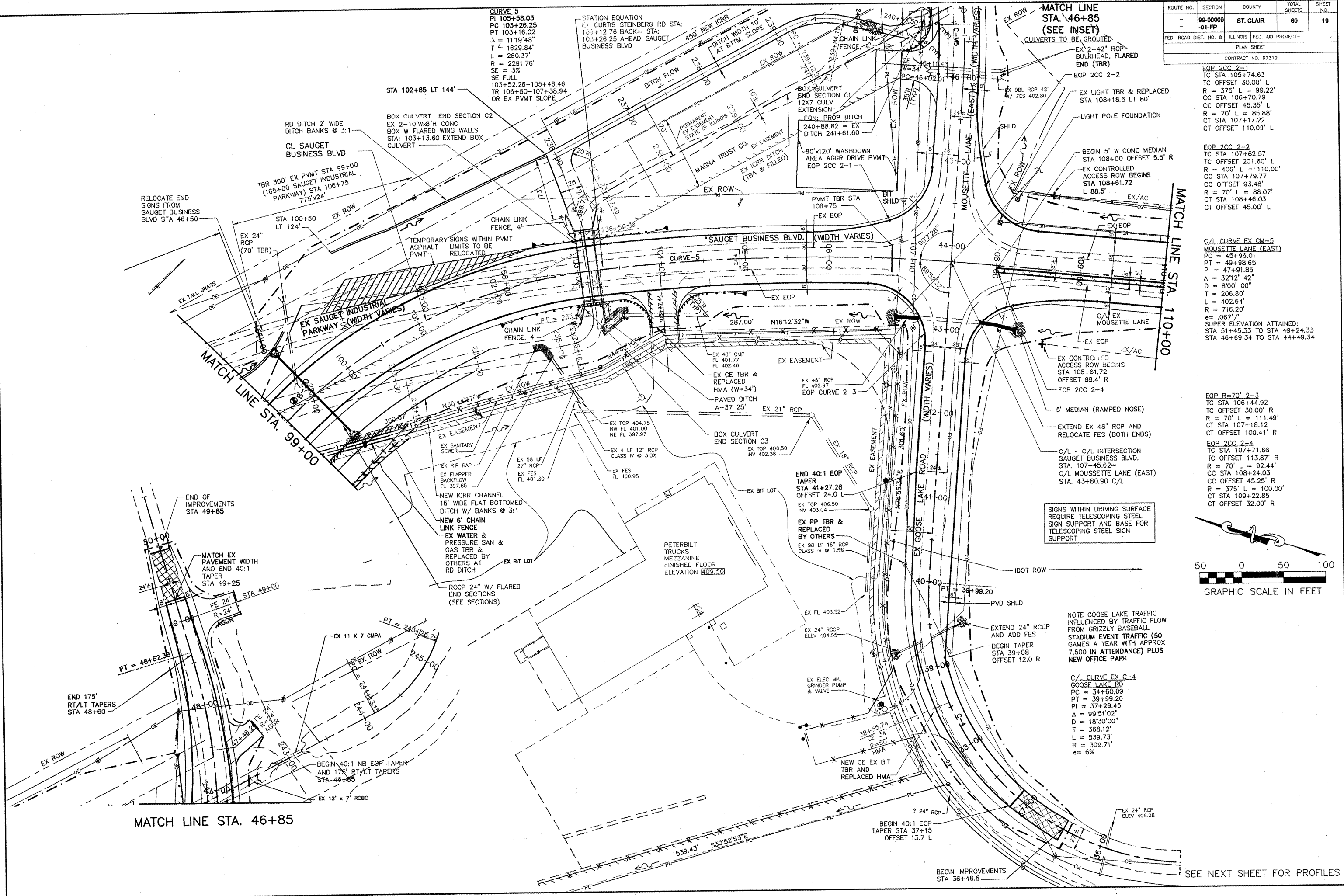
MATCH LINE STA. 46+85  
 (SEE INSET)

MATCH LINE STA. 110+00

MATCH LINE STA. 46+85

MATCH LINE STA. 99+00

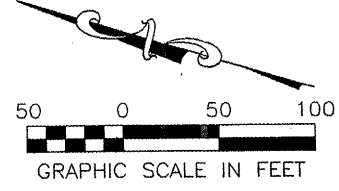
T:\CADD\SAUGET\71313171.plt adw\020202.dwg PLAN PROFILE Aug 018 INTERSECT PLAN STA 107+45, 4/10/2008 8:53:23 PM, Meter 8825.pcd



SIGNS WITHIN DRIVING SURFACE REQUIRE TELESCOPING STEEL SIGN SUPPORT AND BASE FOR TELESCOPING STEEL SIGN SUPPORT

NOTE GOOSE LAKE TRAFFIC INFLUENCED BY TRAFFIC FLOW FROM GRIZZLY BASEBALL STADIUM EVENT TRAFFIC (50 GAMES A YEAR WITH APPROX 7,500 IN ATTENDANCE) PLUS NEW OFFICE PARK

C/L CURVE EX C-4  
 GOOSE LAKE RD  
 PC = 34+60.09  
 PT = 39+99.20  
 PI = 37+29.45  
 Δ = 99'51"02"  
 D = 18'30"00"  
 T = 368.12'  
 L = 539.73'  
 R = 309.71'  
 e = 6%



SEE NEXT SHEET FOR PROFILES