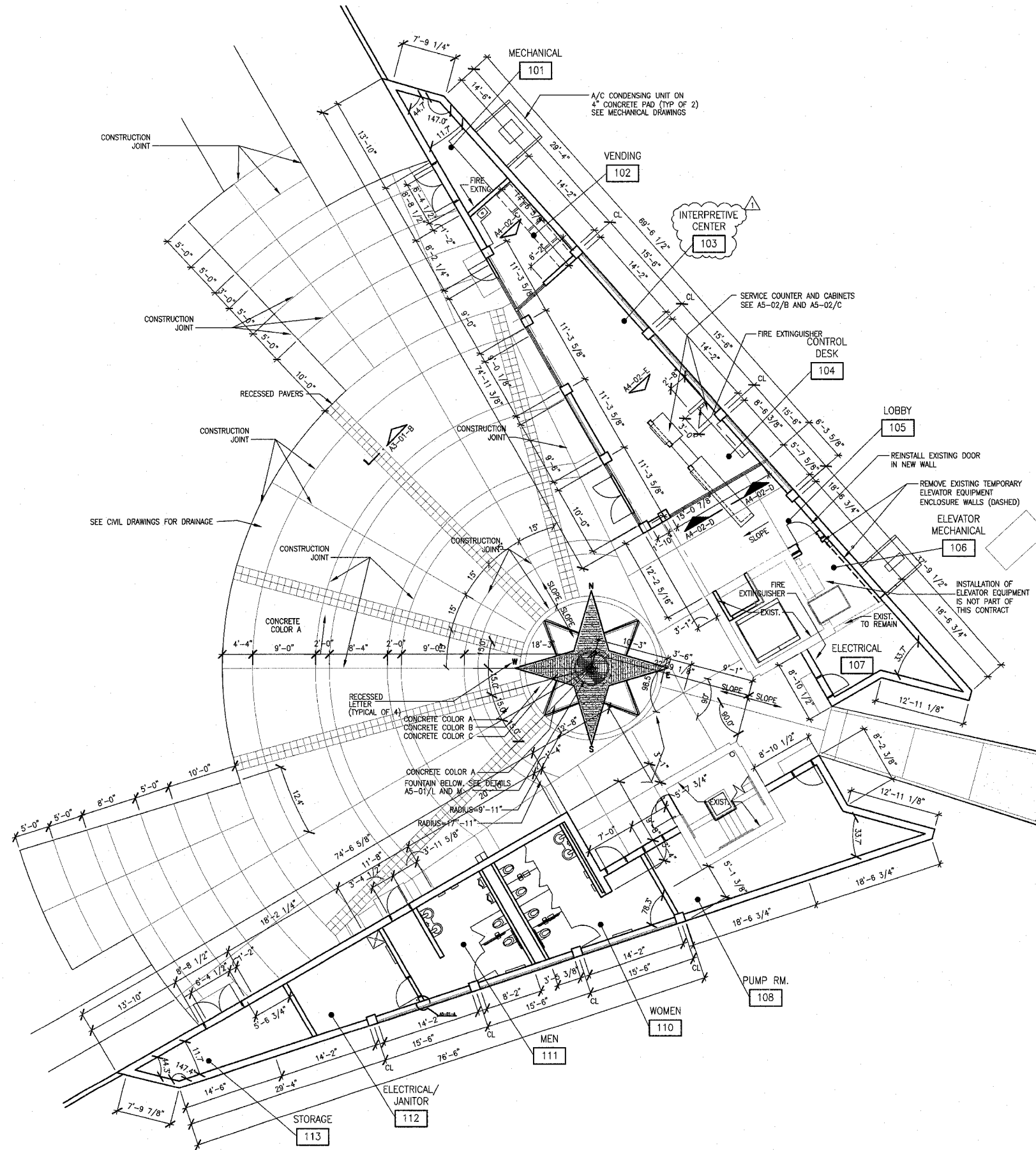


F.A. RTE.	SECTION	COUNTY	TOTAL SHEETS	SHEET NO.
	03-00026-00-PK 06-00026-01-MS	MADISON	53	25

FEDERAL AID PROJECT

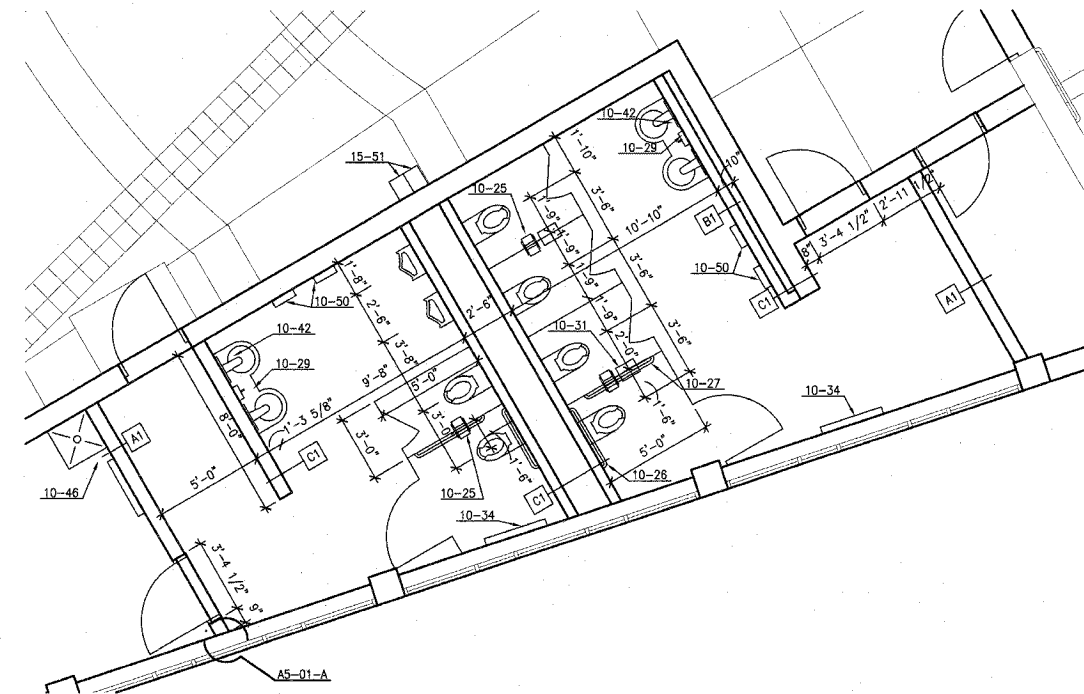
Note: Remove temporary elevator machine enclosure as required.
(Temporary enclosure shall remain as long as possible to reduce the chances of damaging elevator equipment.)



A FLOOR PLAN
1/8" = 1'-0"

KEYED NOTES:

- 04-63 8"x8" WALL VENTS @ 8" ABOVE FLOOR & 8" (MIN.) BELOW ROOF PANELS.
- 10-25 ACCESSIBLE TOILET TISSUE DISPENSER
- 10-26 36" GRAB BAR
- 10-27 42" GRAB BAR
- 10-29 ACCESSIBLE SOAP DISPENSER
- 10-31 ACCESSIBLE SANITARY NAPKIN DISPOSAL
- 10-34 DIAPER CHANGING TABLE
- 10-42 MIRROR
- 10-46 UTILITY SHELF WITH HOOKS
- 10-50 ELECTRIC HAND DRYER
- 15-51 DRINKING FOUNTAIN



B ENLARGED RESTROOM PLAN
1/4" = 1'-0"

211 N. Broadway
Suite 1900
St. Louis, MO 63102
(314) 241-8188
FAX (314) 241-0125



LEWIS AND CLARK MEMORIAL TOWER
VILLAGE OF HARTFORD, ILLINOIS
HARTFORD, ILLINOIS 62049

SHEET TITLE:
FLOOR PLAN AND ENLARGED RESTROOM PLAN

REV. NO.	DATE	REMARKS
1	11/9/06	DOT REV.

KENNEDY PROJECT NO
KAI# 10-02048

ISSUE DATE
APRIL 11, 2008

SHEET NO

A3-01