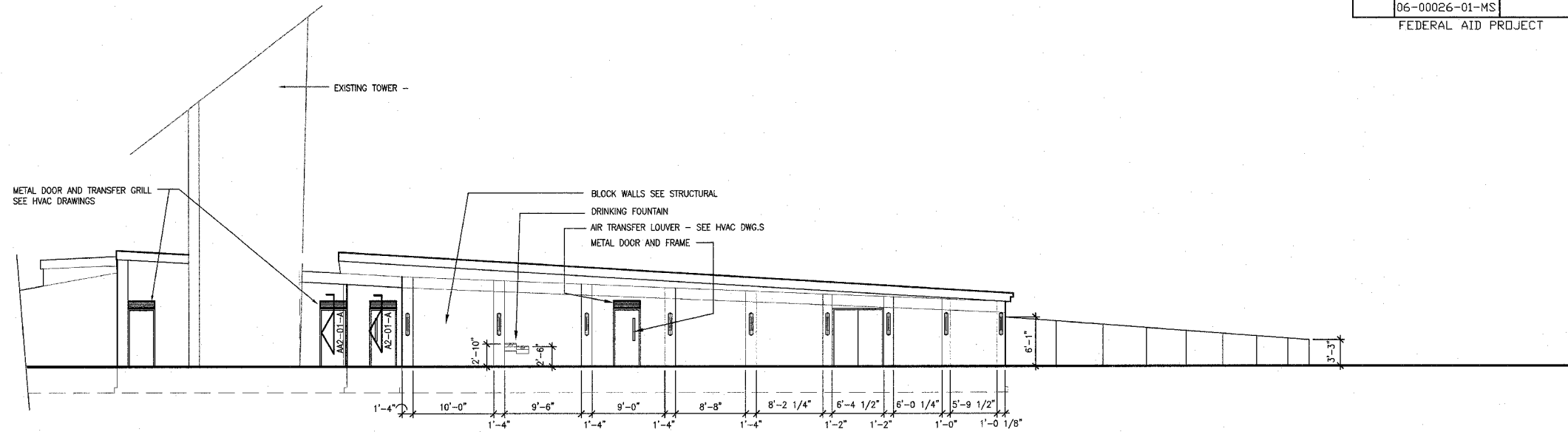
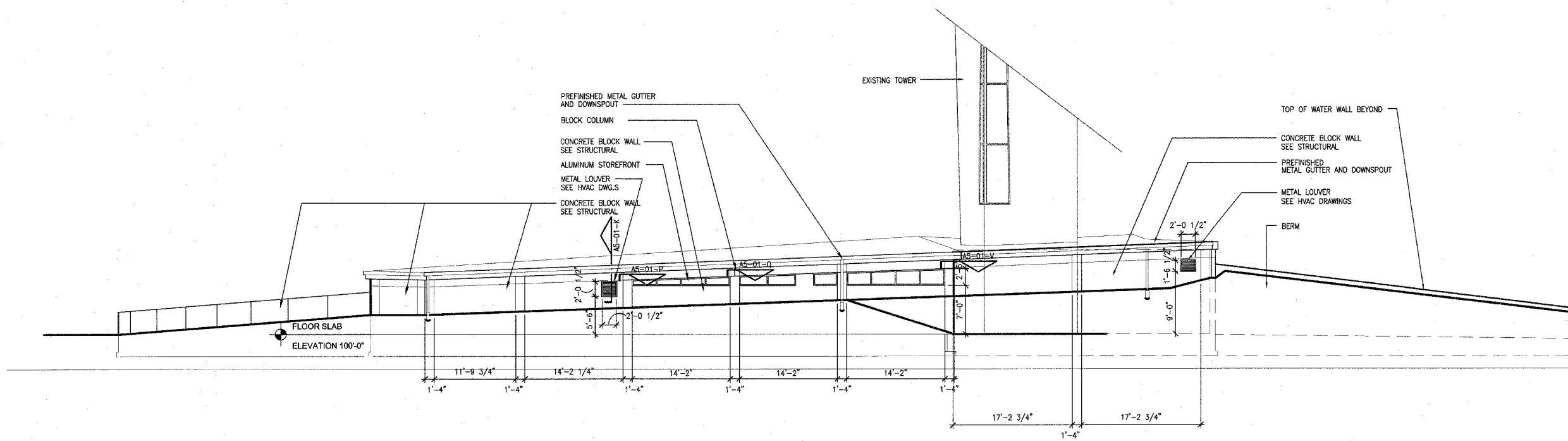


F.A. RTE.	SECTION	COUNTY	TOTAL SHEETS	SHEET NO.
	03-00026-00-PK 06-00026-01-MS	MADISON	53	28

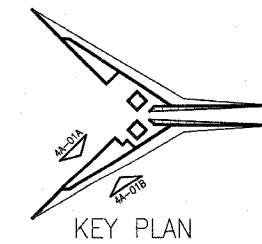
FEDERAL AID PROJECT



**A** ELEVATION  
1/8"=1'-0"



**B** ELEVATION  
1/8"=1'-0"



P:\2002\10-02048\6000\50\PHASE-2\02B\A4-01.DWG | 12/27/2005 8:40:36 AM | Xref's: BS-ELEV TB24365DL | Images: none

211 N. Broadway  
Suite 1900  
St. Louis, MO 63102  
(314) 241-8188  
FAX (314) 241-0125



**LEWIS AND CLARK MEMORIAL TOWER**  
**VILLAGE OF HARTFORD, ILLINOIS**  
HARTFORD, ILLINOIS 62049

SHEET TITLE:  
**EXTERIOR ELEVATIONS**

REV. NO.	REMARKS	DATE

KENNEDY PROJECT NO  
KAI# 10-02048

ISSUE DATE  
APRIL 11, 2008

SHEET NO  
**A4-01**