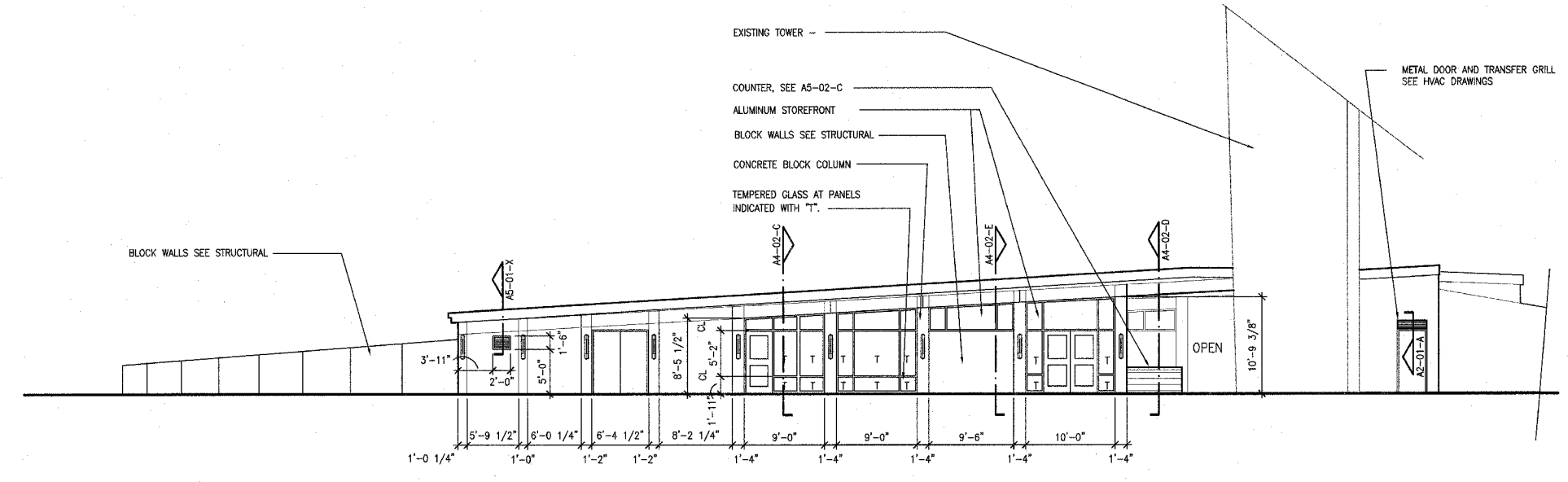
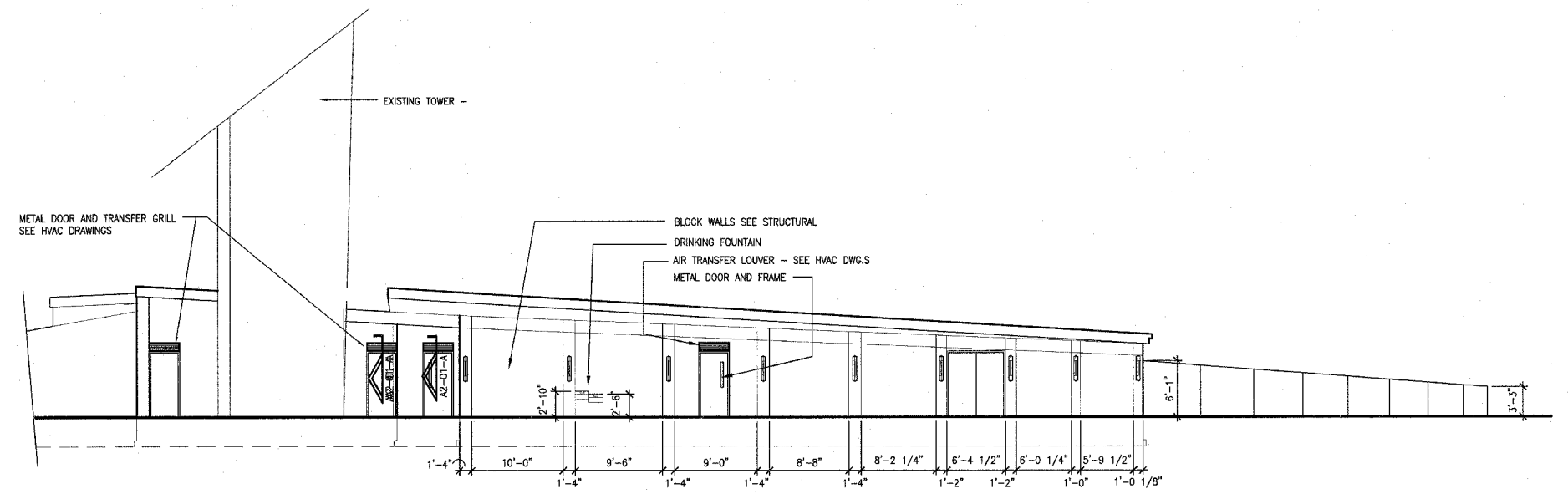


F.A. RTE.	SECTION	COUNTY	TOTAL SHEETS	SHEET NO.
	03-00026-00-PK 06-00026-01-MS	MADISON	53	29

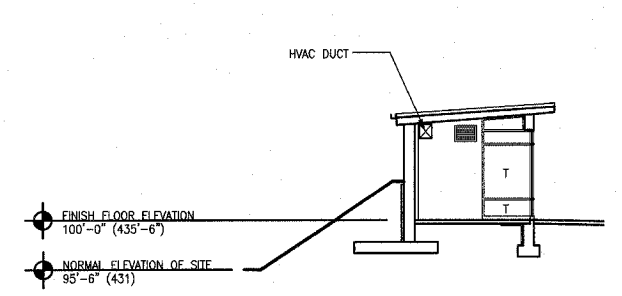
FEDERAL AID PROJECT



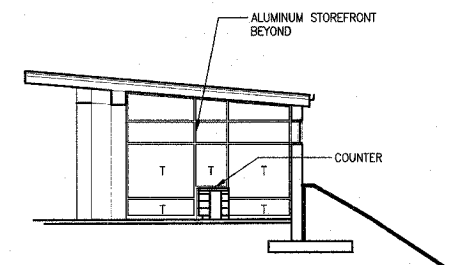
A NORTH BUILDING PLAZA ELEVATION
1/8"=1'-0"



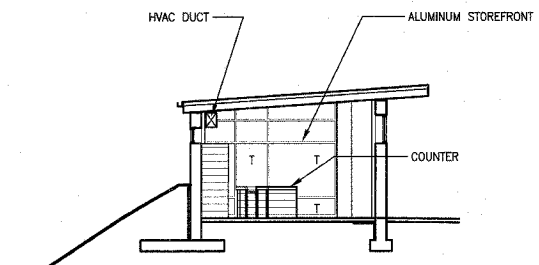
B SOUTH BUILDING PLAZA ELEVATION
1/8"=1'-0"



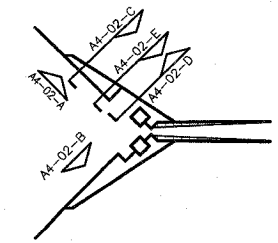
C SECTION AT NORTH BUILDING
1/8"=1'-0"



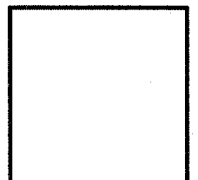
D SECTION AT NORTH BUILDING
1/8"=1'-0"



E SECTION AT NORTH BUILDING
1/8"=1'-0"



KEY PLAN, N.T.S.



211 N. Broadway
Suite 1900
St. Louis, MO 63102
(314) 241-8188
FAX (314) 241-0125

LEWIS AND CLARK MEMORIAL TOWER
VILLAGE OF HARTFORD, ILLINOIS
HARTFORD, ILLINOIS 62049

SHEET TITLE:
EXTERIOR BUILDING ELEVATIONS

DATE	REMARKS	REV. NO.

KENNEDY PROJECT NO
KAI# 10-02048

ISSUE DATE
APRIL 11, 2008

SHEET NO

A4-02

P:\2002\10-02048\600DSCA\PHASE-2\2B\PHASE2\A4-02.DWG | 5/1/2006 3:47:04 PM | Xref's: BS-ELEV_TB24360L_BS-PLAN-2A | Images: none

© 2008 KENNEDY ASSOCIATES INCORPORATED