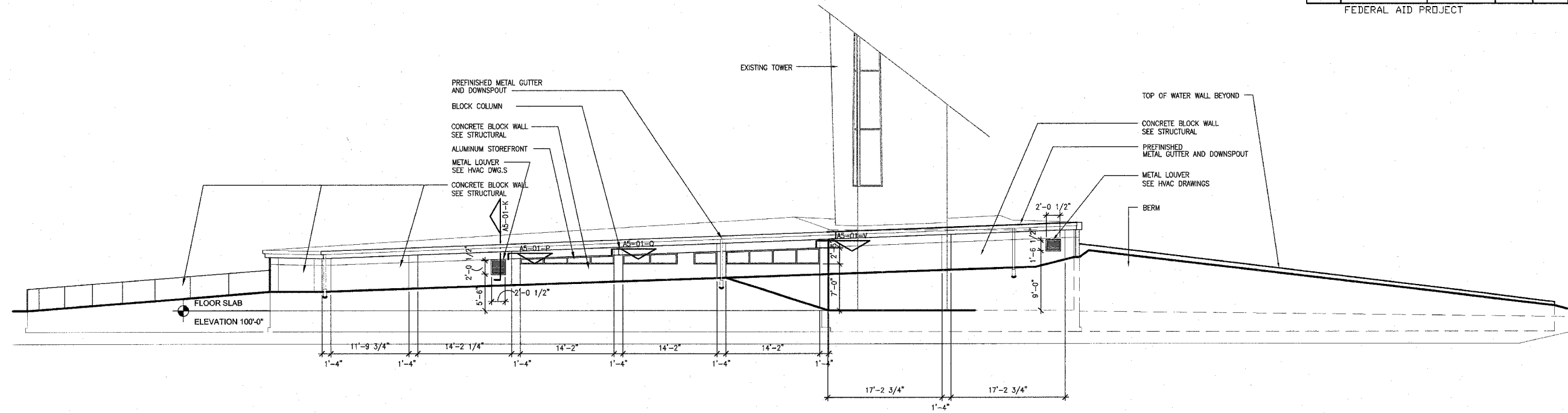
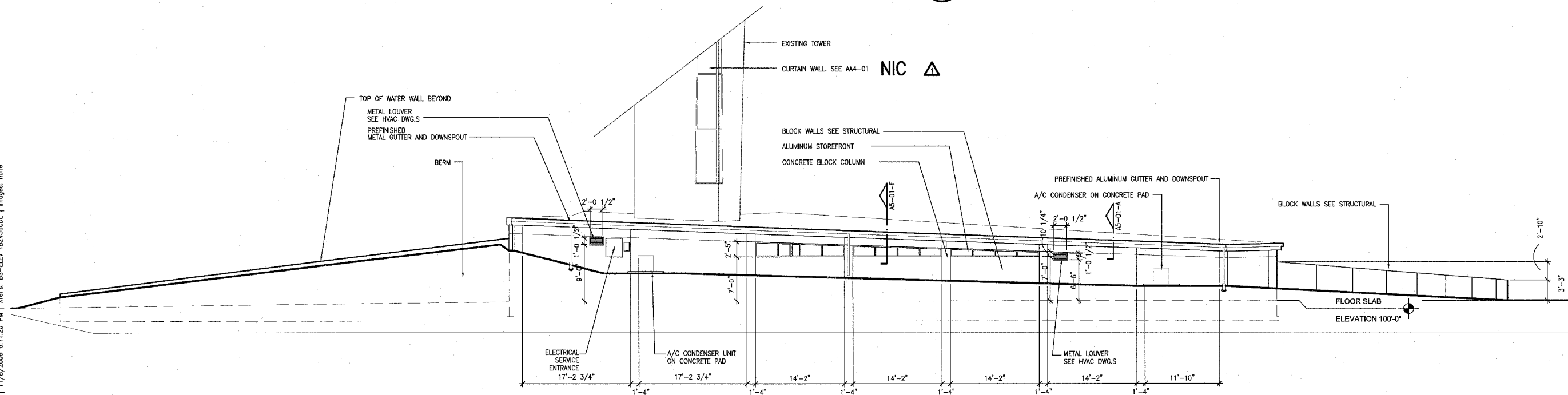


F.A. RTE.	SECTION	COUNTY	TOTAL SHEETS	SHEET NO.
	03-00026-00-PK 06-00026-01-MS	MADISON	53	30

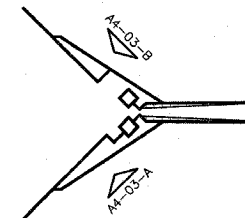
FEDERAL AID PROJECT



A SOUTH ELEVATION OF SOUTH BUILDING
1/8"=1'-0"



B NORTH ELEVATION OF NORTH BUILDING
1/8"=1'-0"



KEY PLAN, N.T.S.

211 N. Broadway
Suite 1900
St. Louis, MO 63102
(314) 241-8188
FAX (314) 241-0125

KAI

LEWIS AND CLARK MEMORIAL TOWER
VILLAGE OF HARTFORD, ILLINOIS
HARTFORD, ILLINOIS 62049

SHEET TITLE:
EXTERIOR BUILDING ELEVATIONS

REV. NO.	DATE	REMARKS
1	11/9/06	DOT REV.

KENNEDY PROJECT NO
KAI 10-02048

ISSUE DATE
APRIL 11, 2008

SHEET NO

A4-03

P:\2002\10-02048\600DISC\PHASE-2\24\B\PHASE2\A4-03.DWG | 11/9/2006 6:11:20 PM | Xref's: BS-ELEV TB2436CDL | Images: none

©2006 KENNEDY ASSOCIATES INCORPORATED