

F.A. RTE.	SECTION	COUNTY	TOTAL SHEETS	SHEET NO.
	03-00026-00-PK 06-00026-01-MS	MADISON	53	33

FEDERAL AID PROJECT

211 N. Broadway
Suite 1900
St. Louis, MO 63102
(314) 241-8188
FAX (314) 241-0125

KAI

LEWIS AND CLARK MEMORIAL TOWER
VILLAGE OF HARTFORD, ILLINOIS
HARTFORD, ILLINOIS 62049

SHEET TITLE:
MECHANICAL FLOOR PLAN

REV. NO.	REMARKS	DATE
1	1007 SUBMISSION	11-09-08

KENNEDY PROJECT NO
KAI# 10-02048

ISSUE DATE
APRIL 11, 2008

SHEET NO

M3-01

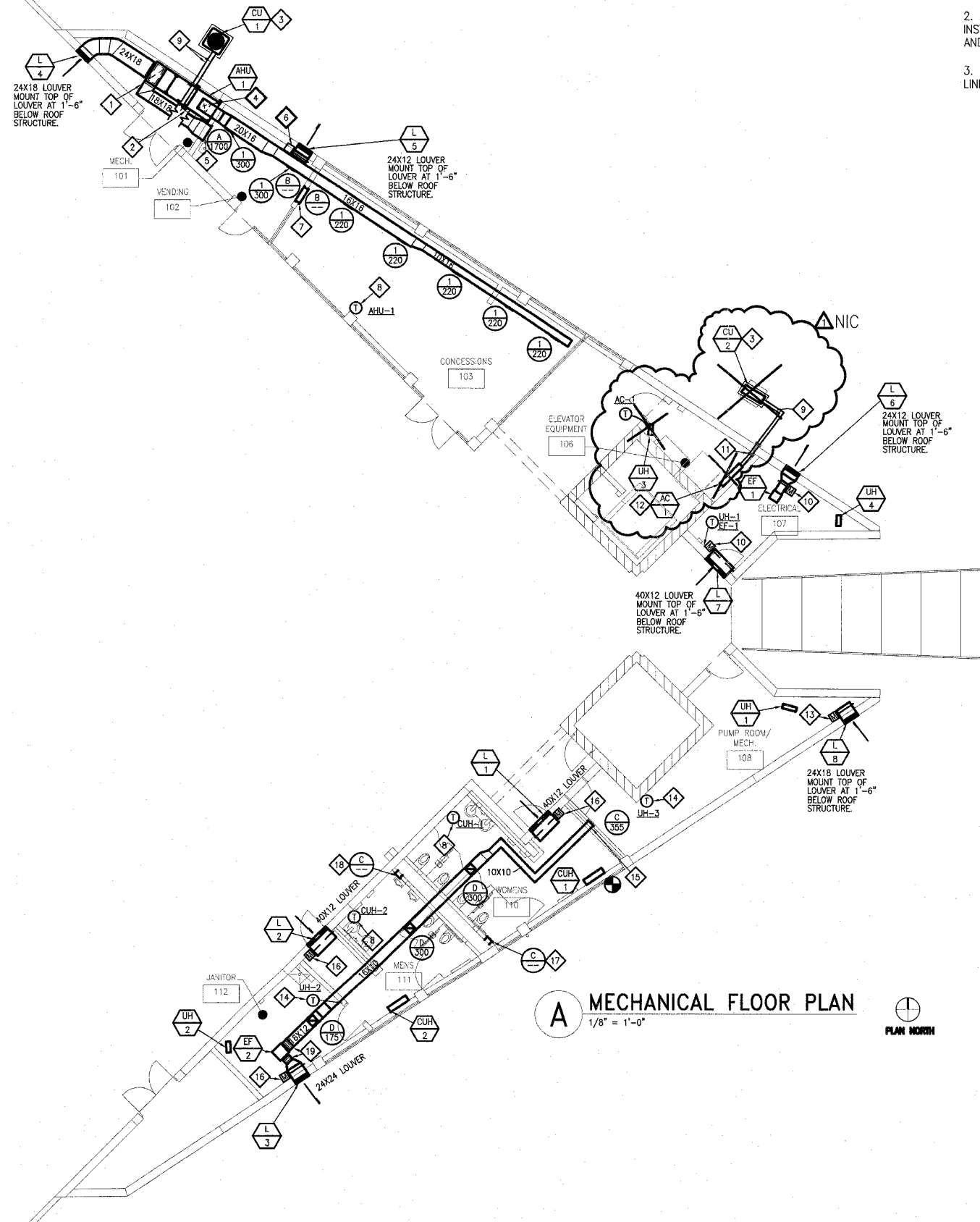
© 2008 KENNEDY ASSOCIATES INCORPORATED

GENERAL NOTES:

1. THESE DRAWINGS ARE DIAGRAMMATIC IN NATURE, ALL WORK IS TO BE COORDINATED BETWEEN ALL TRADES BEFORE CONSTRUCTION.
2. ALL DUCTWORK, EQUIPMENT AND PIPING IS TO BE INSTALLED IN ACCORDANCE WITH ALL PERTINENT CODES AND SMACNA SEISMIC DESIGN REQUIREMENTS.
3. DUCT SIZES SHOWN ARE SHEETMETAL SIZES WITH 1" LINER.

KEYED NOTES:

- 1 SERVICE ACCESS FOR FILTER MAINTENANCE.
- 2 PROVIDE A 1" TYPE "L" COPPER CONDENSATE DRAIN PIPE AND EXTEND TO FLOOR DRAIN WITH A DOWNTURN 45° ELBOW. PROVIDE THREADED BRASS PLUG CLEANOUTS AT EACH CHANGE OF DIRECTION.
- 3 PROVIDE A 0'-4" THICK CONCRETE PAD THAT EXTENDS 0'-4" BEYOND EACH EDGE OF THE EQUIPMENT. SECURE CONDENSING UNIT TO PAD WITH STAINLESS STEEL CONCRETE ANCHORS AND SCREWS.
- 4 PROVIDE 90° ELBOW WITH TURNING VANES AND SIZE TO MATCH CONNECTION OF AHU-1.
- 5 MOUNT RETURN GRILLE AS HIGH AS DUCTWORK WILL ALLOW.
- 6 PROVIDE AN ADJUSTABLE WEIGHTED BAROMETRIC RELIEF DAMPER. ADJUST WEIGHTS TO MAINTAIN A SLIGHTLY POSITIVE BUILDING PRESSURIZATION.
- 7 MOUNT TOP OF TRANSFER GRILLES SO THAT THEY ARE LEVEL WITH GRILLE "B" ON OPPOSITE WALL.
- 8 PROVIDE A SEVEN DAY PROGRAMMABLE HEATING/COOLING THERMOSTAT WITH WHITE METAL LOCKABLE THERMOSTAT GUARD.
- 9 SUCTION AND LIQUID REFRIGERANT PIPING SIZED BY CONDENSING UNIT MANUFACTURER.
- 10 INTERLOCK DAMPER TO OPEN WITH ACTIVATION OF EF-1. PROVIDE AN 20 GAGE GALVANIZED PLENUM TO MOUNT DAMPER.
- 11 PROVIDE A 1" TYPE "L" COPPER CONDENSATE DRAIN PIPE AND EXTEND DOWN INTERIOR WALL AND PENETRATE AT 0'-6" ABOVE FINISHED GRADE AND TERMINATE WITH A 45° DOWNTURN ELBOW. PROVIDE THREADED BRASS PLUG CLEANOUTS AT EACH CHANGE OF DIRECTION.
- 12 MOUNT AC-1 AT AN ELEVATION THAT ALLOWS FOR PROPER CONDENSATE DRAINAGE AND MAINTENANCE.
- 13 INTERLOCK DAMPER TO OPEN WITH ACTIVATION OF EXISTING EXHAUST FAN IN JANITOR'S 112. PROVIDE AN 20 GAGE GALVANIZED PLENUM TO MOUNT DAMPER.
- 14 PROVIDE A LOW VOLTAGE HEATING ONLY THERMOSTAT WITH WHITE METAL LOCKABLE GUARD.
- 15 PROVIDE NEW OPENING WITH NEW DUCT CONNECTION TO EXISTING 10"x10" EXHAUST DUCT. EXTEND NEW DUCT THROUGH OPENING AND CONNECT TO NEW REGISTER, "C".
- 16 INTERLOCK DAMPER TO OPEN WITH ACTIVATION OF EF-2. PROVIDE AN 20 GAGE GALVANIZED PLENUM TO MOUNT DAMPER.
- 17 MOUNT TOP OF GRILLE AT 1'-6" BELOW STRUCTURE. EXTEND DUCTWORK INTO CHASE AND LEAVE END OPEN TO SPACE.
- 18 MOUNT TOP OF GRILLE AT 1'-6" BELOW STRUCTURE. EXTEND DUCTWORK INTO CHASE AND LEAVE END OPEN TO SPACE.
- 19 FLEXIBLE CONNECTORS.



A MECHANICAL FLOOR PLAN
1/8" = 1'-0"



Drawing Stamp Information