

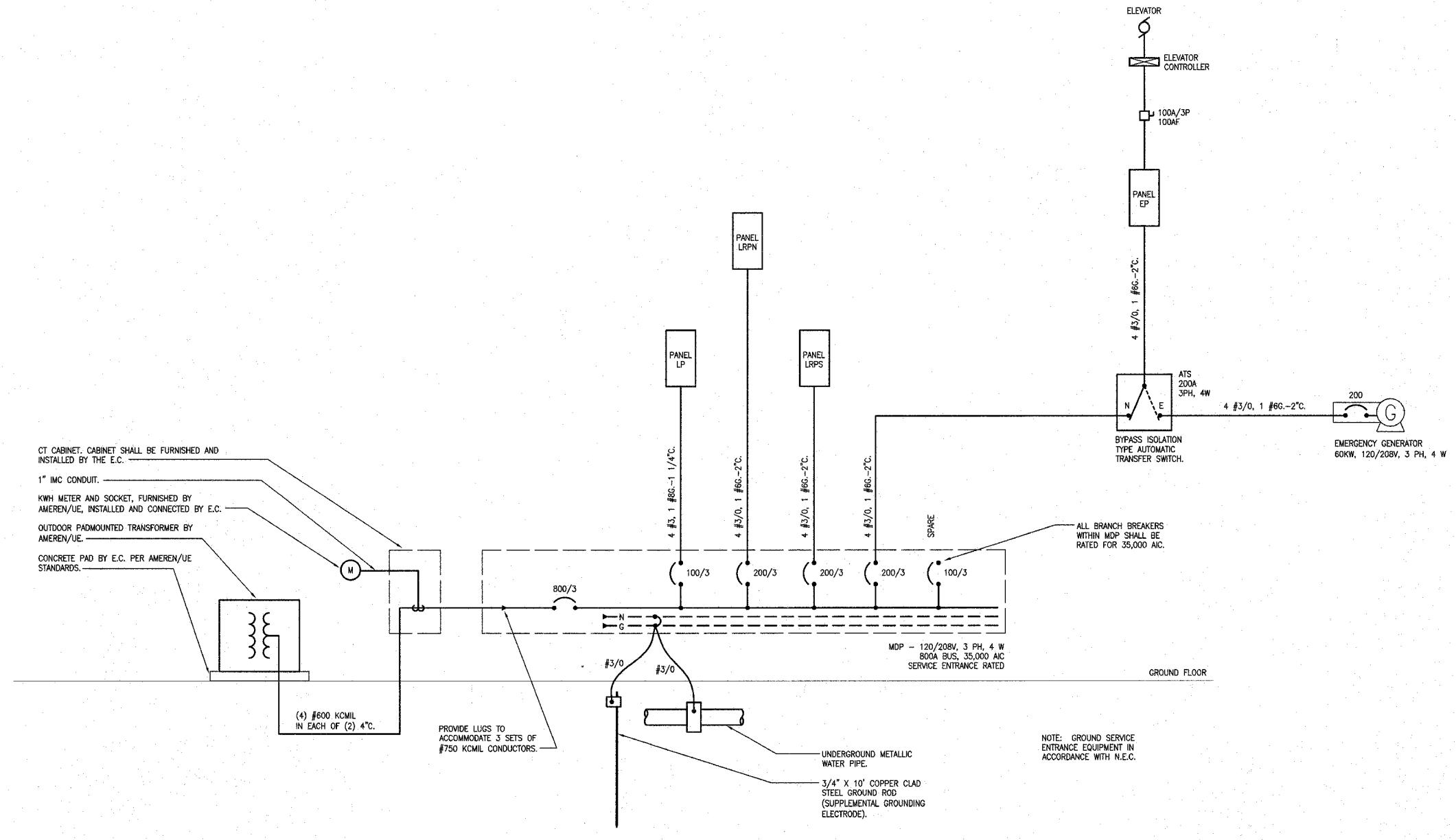
F.A. RITE	SECTION	COUNTY	TOTAL SHEETS	SHEET NO.
	03-00026-00-PK 06-00026-01-MS	MADISON	53	48

FEDERAL AID PROJECT

211 N. Broadway  
Suite 1900  
St. Louis, MO 63102  
(314) 241-8188  
FAX (314) 241-0125

**KAI**

**LEWIS AND CLARK MEMORIAL TOWER**  
**VILLAGE OF HARTFORD, ILLINOIS**  
HARTFORD, ILLINOIS 62049



**A ONE LINE DIAGRAM**  
NO SCALE

SHEET TITLE:  
**ONE LINE DIAGRAM**

REV. NO.	REMARKS	DATE

KENNEDY PROJECT NO  
KAI# 10-02048

ISSUE DATE  
APRIL 11, 2008

SHEET NO  
**E5-01**