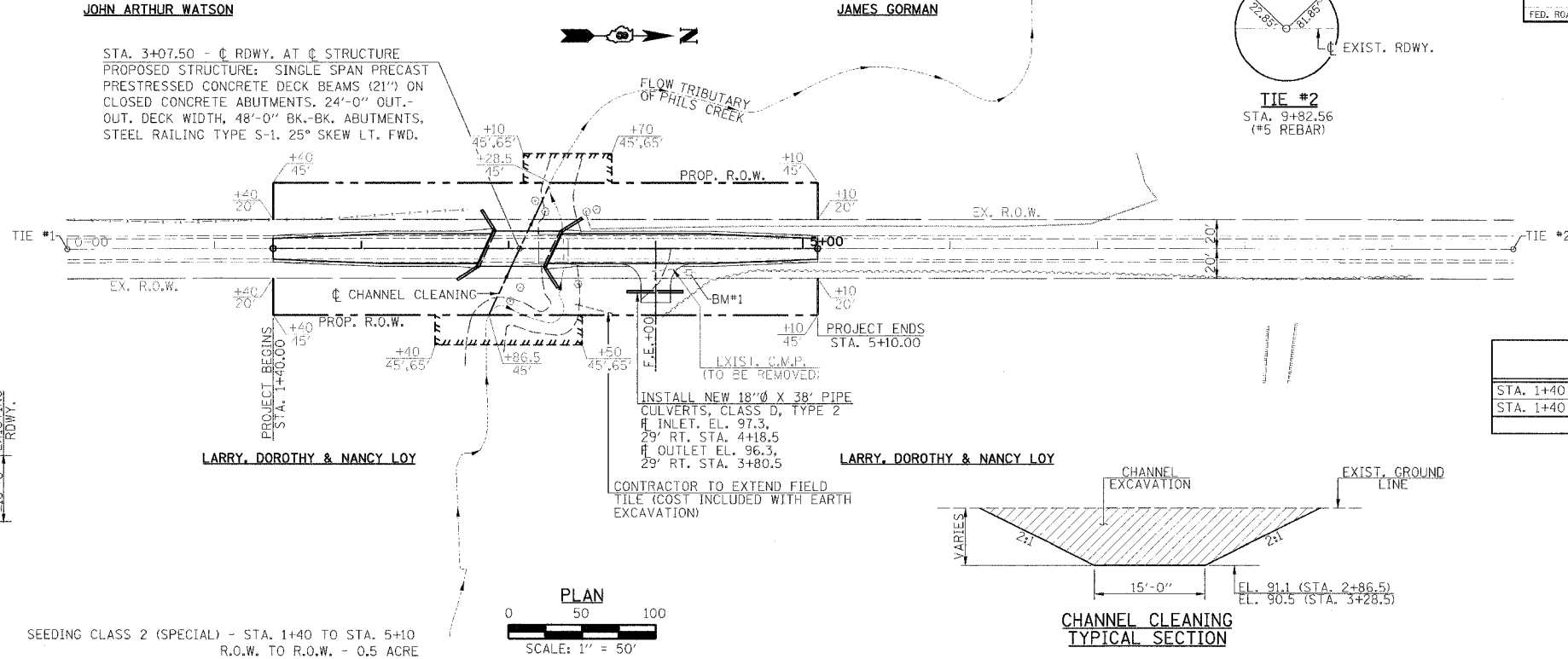
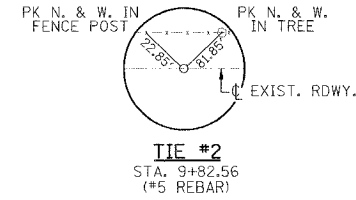
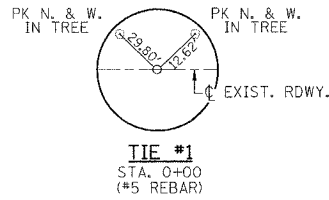


SECTION T, 8 N., R. 10 W., 3rd P.M.

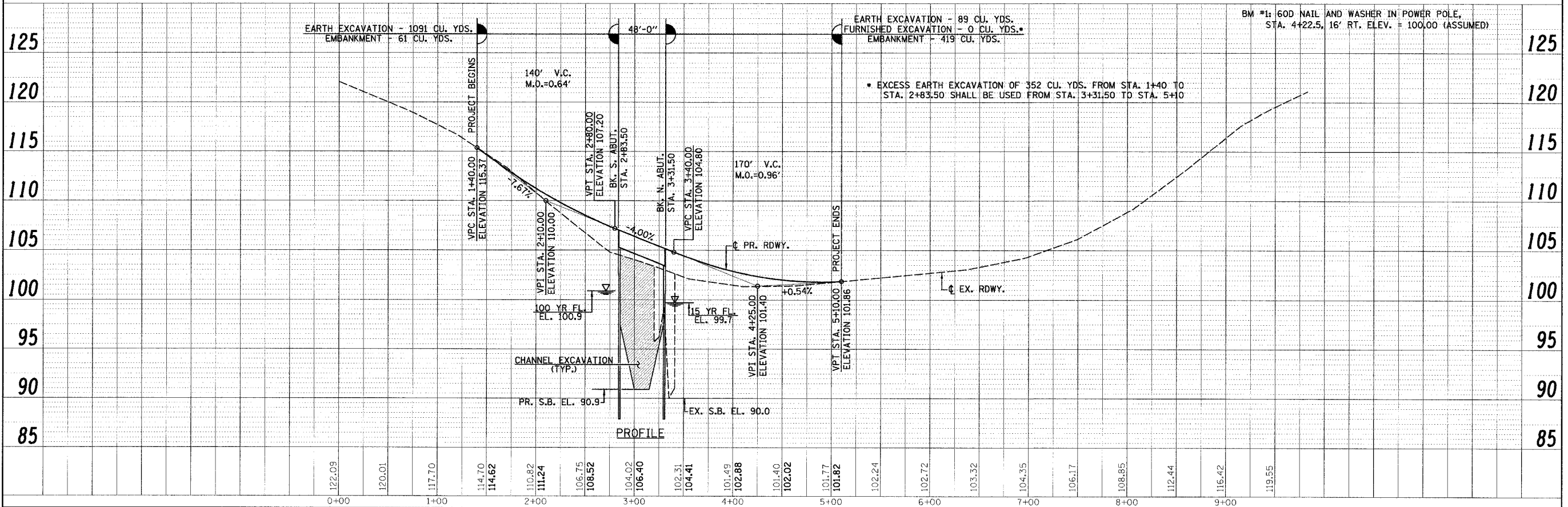
T.R. RTE.	SECTION	COUNTY	TOTAL SHEETS	SHEET NO.
50	05-03104-00-BR	JERSEY	12	3
FED. ROAD DIST. NO.			ILLINOIS FED. AID PROJECT	
			CONTRACT NO. 97334	



SCHEDULE TREE REMOVAL, ACRES

LOCATION	QUANTITY (ACRE)
STA. 1+40 TO STA. 5+10 LT.	0.3
STA. 1+40 TO STA. 3+80 RT.	0.2
TOTAL	0.5

UTILITIES
 FRONTIER COMMUNICATIONS
 225 N. BROAD STREET
 CARLINVILLE, ILLINOIS 62626
 1-217-854-4013
 M.J.M. ELECTRIC COOPERATIVE, INC.
 P.O. BOX 80
 CARLINVILLE, ILLINOIS 62626
 1-217-854-3137
 JERSEY COUNTY RURAL WATER
 1003 E. SHIPMAN ROAD
 JERSEYVILLE, ILLINOIS
 1-618-498-9534



FILE NAME =	USER NAME = #USER#	DESIGNED =	REVISED =	<p>Allen Henderson & Associates, Inc. Civil and Structural Engineers Springfield, IL 62703 Phone: (217)544-8033 IL Design Firm No. 184-001907</p>	<p>PLAN & PROFILE</p> <p>SCALE: 1"=50' H, 1"=5' V; SHEET NO. 3 OF 12 SHEETS STA. 1+40.00 TO STA. 5+10.00</p>	T.R. RTE.	SECTION	COUNTY	TOTAL SHEETS	SHEET NO.
#FILE.#		CHECKED =	REVISED =			50	05-03104-00-BR	JERSEY	12	3
		DRAWN =	REVISED =			FED. ROAD DIST. NO.			ILLINOIS FED. AID PROJECT	
		CHECKED =	REVISED =						CONTRACT NO. 97334	

DATE	BY	REVISION
		1. REVISED
		2. REVISED
		3. REVISED
		4. REVISED
		5. REVISED
		6. REVISED
		7. REVISED
		8. REVISED
		9. REVISED
		10. REVISED
		11. REVISED
		12. REVISED

DATE	BY	REVISION
		1. REVISED
		2. REVISED
		3. REVISED
		4. REVISED
		5. REVISED
		6. REVISED
		7. REVISED
		8. REVISED
		9. REVISED
		10. REVISED
		11. REVISED
		12. REVISED