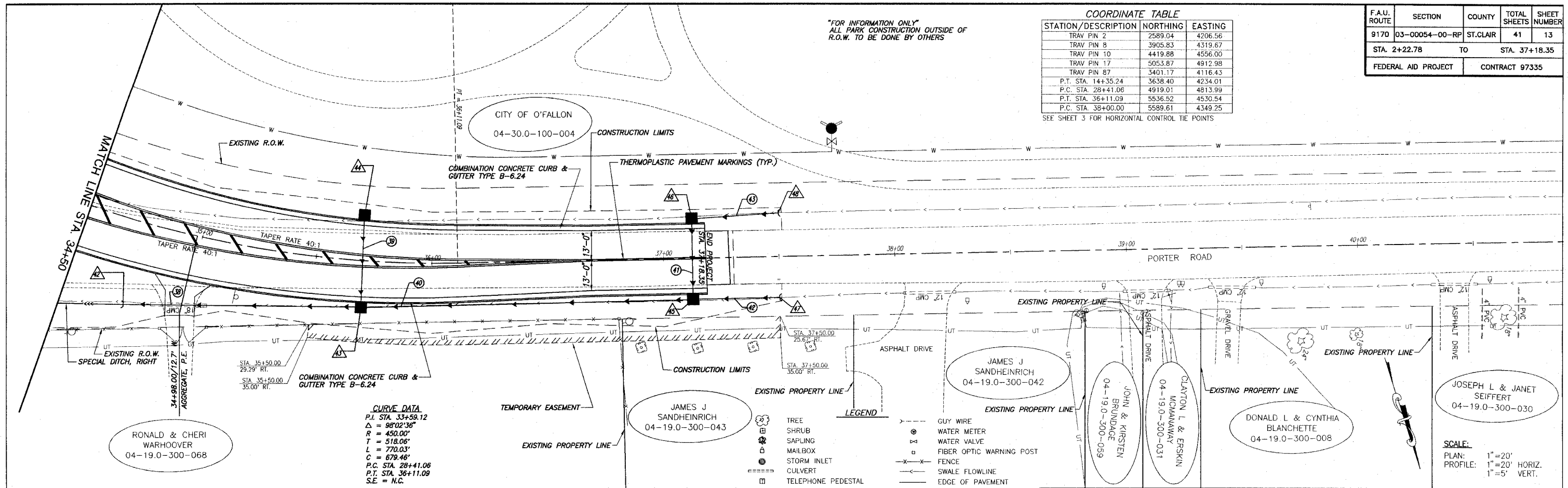


"FOR INFORMATION ONLY"
ALL PARK CONSTRUCTION OUTSIDE OF
R.O.W. TO BE DONE BY OTHERS

COORDINATE TABLE		
STATION/DESCRIPTION	NORTHING	EASTING
TRAV PIN 2	2589.04	4206.56
TRAV PIN 8	3905.83	4319.67
TRAV PIN 10	4419.88	4556.00
TRAV PIN 17	5053.87	4912.98
TRAV PIN 87	3401.17	4116.43
P.T. STA. 14+35.24	3638.40	4234.01
P.C. STA. 28+41.06	4919.01	4813.99
P.T. STA. 36+11.09	5536.52	4530.54
P.C. STA. 38+00.00	5589.61	4349.25

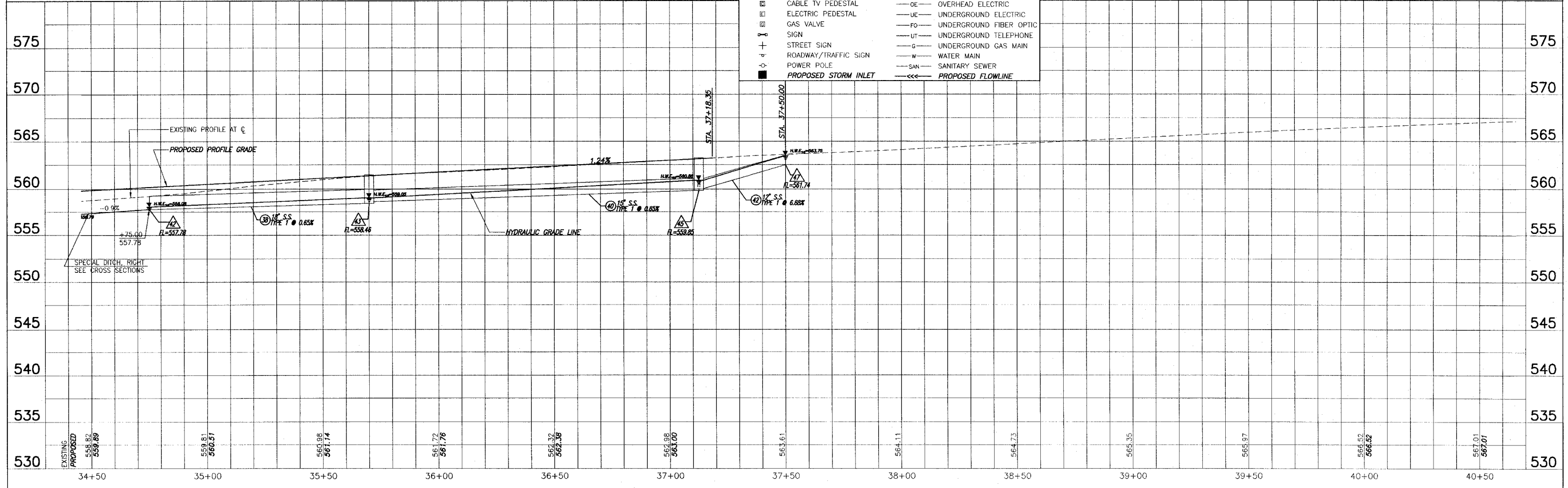
SEE SHEET 3 FOR HORIZONTAL CONTROL TIE POINTS

F.A.U. ROUTE	SECTION	COUNTY	TOTAL SHEETS	SHEET NUMBER
9170	03-00054-00-RP	ST. CLAIR	41	13
STA. 2+22.78		TO	STA. 37+18.35	
FEDERAL AID PROJECT			CONTRACT 97335	



CURVE DATA
 P.I. STA. 33+59.12
 $\Delta = 98^{\circ}02'36"$
 $R = 450.00'$
 $T = 518.06'$
 $L = 770.03'$
 $C = 679.46'$
 P.C. STA. 28+41.06
 P.T. STA. 36+11.09
 S.E. = N.C.

- LEGEND**
- ☉ TREE
 - ☿ SHRUB
 - ☼ SAPLING
 - ✉ MAILBOX
 - ☼ STORM INLET
 - ▬ CULVERT
 - ☐ TELEPHONE PEDESTAL
 - ☐ CABLE TV PEDESTAL
 - ☐ ELECTRIC PEDESTAL
 - ☐ GAS VALVE
 - ☐ SIGN
 - ☐ STREET SIGN
 - ☐ ROADWAY/TRAFFIC SIGN
 - ☐ POWER POLE
 - ☐ PROPOSED STORM INLET
 - GUY WIRE
 - ⊗ WATER METER
 - ⊕ WATER VALVE
 - FIBER OPTIC WARNING POST
 - FENCE
 - SWALE FLOWLINE
 - EDGE OF PAVEMENT
 - OE OVERHEAD ELECTRIC
 - UE UNDERGROUND ELECTRIC
 - FO UNDERGROUND FIBER OPTIC
 - UT UNDERGROUND TELEPHONE
 - G UNDERGROUND GAS MAIN
 - W WATER MAIN
 - SAN SANITARY SEWER
 - PROPOSED FLOWLINE



ROADWAY PLAN AND PROFILE OBERNUEFEMANN ROAD IMPROVEMENTS
SECTION 03-00054-00-RP ST. CLAIR COUNTY, ILLINOIS

E:\1\10 - O'Brien Obernuefemann Road.dwg (11_PP.dwg, 2/28/2008 12:34:32 PM) Plotted by M.A.L.