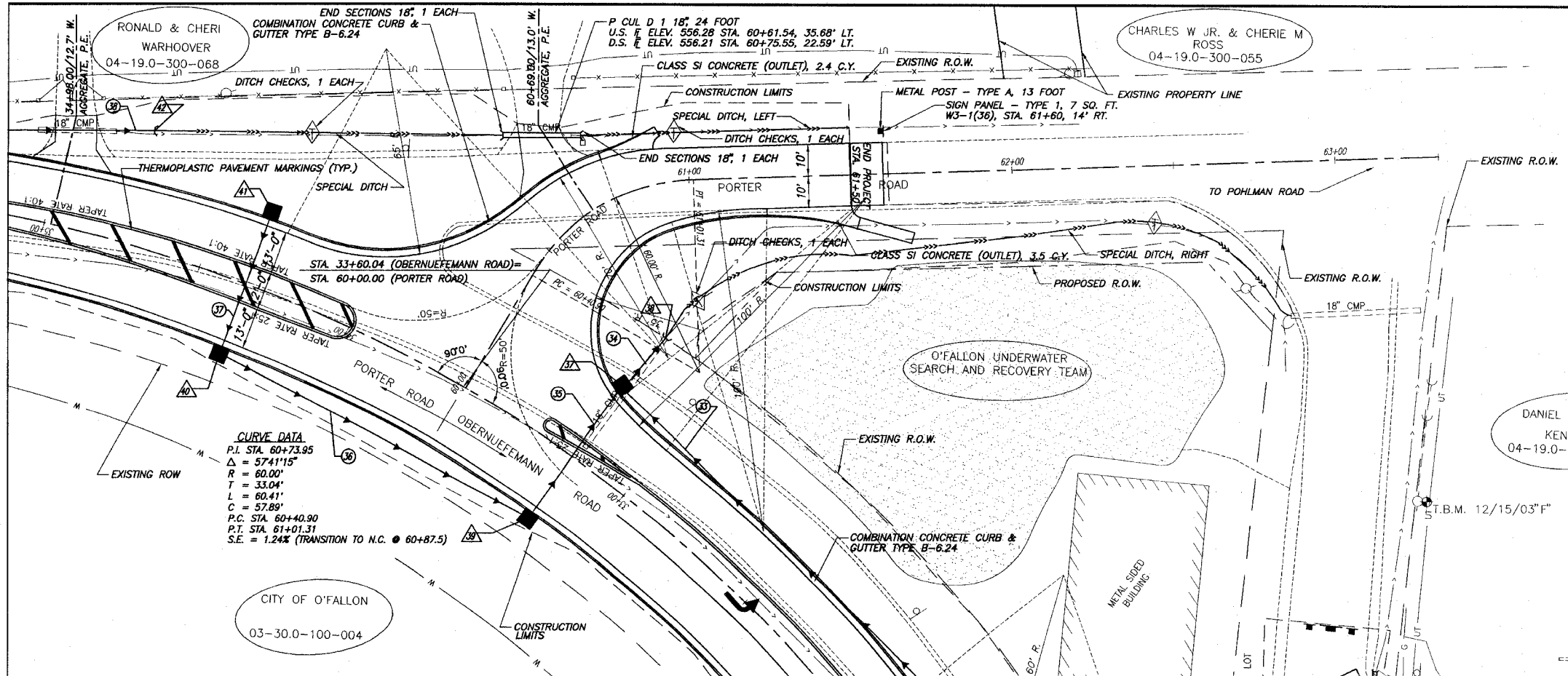


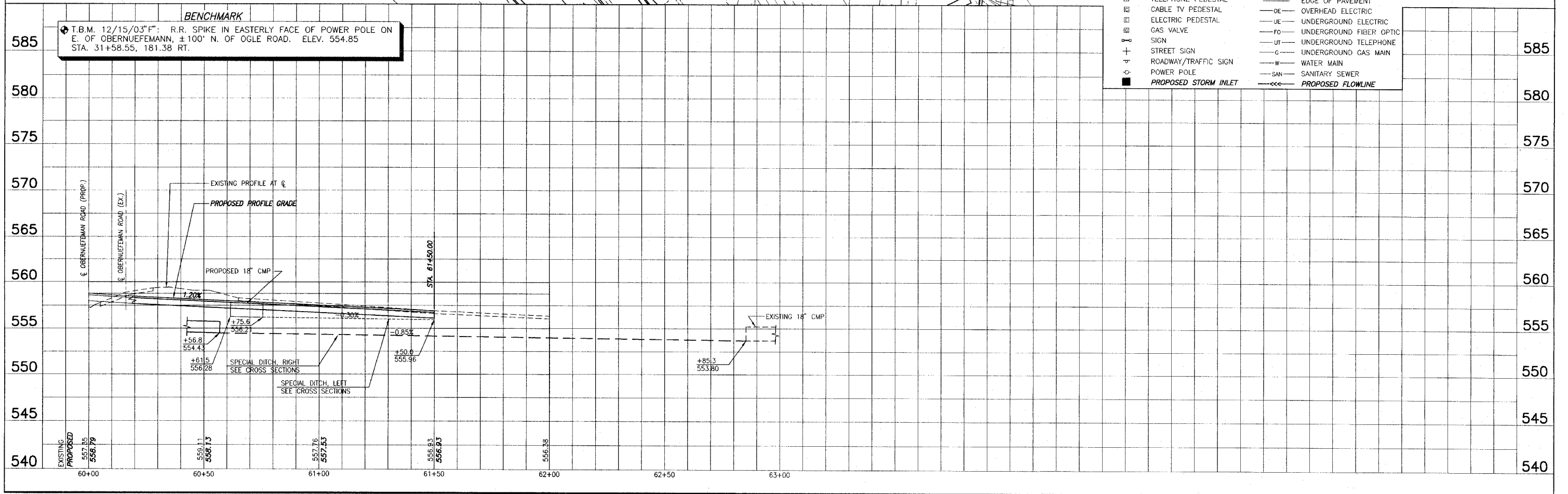
F.A.U. ROUTE	SECTION	COUNTY	TOTAL SHEETS	SHEET NUMBER
9170	03-00054-00-RP	ST. CLAIR	41	15
STA. 2+22.78 TO STA. 37+18.35				
FEDERAL AID PROJECT		CONTRACT 97335		



LEGEND

	TREE		GUY WIRE
	SHRUB		WATER METER
	SAPLING		WATER VALVE
	MAILBOX		FIBER OPTIC WARNING POST
	STORM INLET		FENCE
	CULVERT		SWALE FLOWLINE
	TELEPHONE PEDESTAL		EDGE OF PAVEMENT
	CABLE TV PEDESTAL		OVERHEAD ELECTRIC
	ELECTRIC PEDESTAL		UNDERGROUND ELECTRIC
	GAS VALVE		UNDERGROUND FIBER OPTIC
	SIGN		UNDERGROUND TELEPHONE
	STREET SIGN		UNDERGROUND GAS MAIN
	ROADWAY/TRAFFIC SIGN		WATER MAIN
	POWER POLE		SANITARY SEWER
	PROPOSED STORM INLET		PROPOSED FLOWLINE

SCALE:
 PLAN: 1"=20'
 PROFILE: 1"=20' HORIZ.
 1"=5' VERT.



ROADWAY PLAN AND PROFILE OBERNUEFEMANN ROAD IMPROVEMENTS
 SECTION 03-00054-00-RP ST. CLAIR COUNTY, ILLINOIS

E:\10201 - O'Brien Obernuefemann Road\dwg\15.19.dwg, 2/26/2008 12:30:36 PM, kmlm by MAA