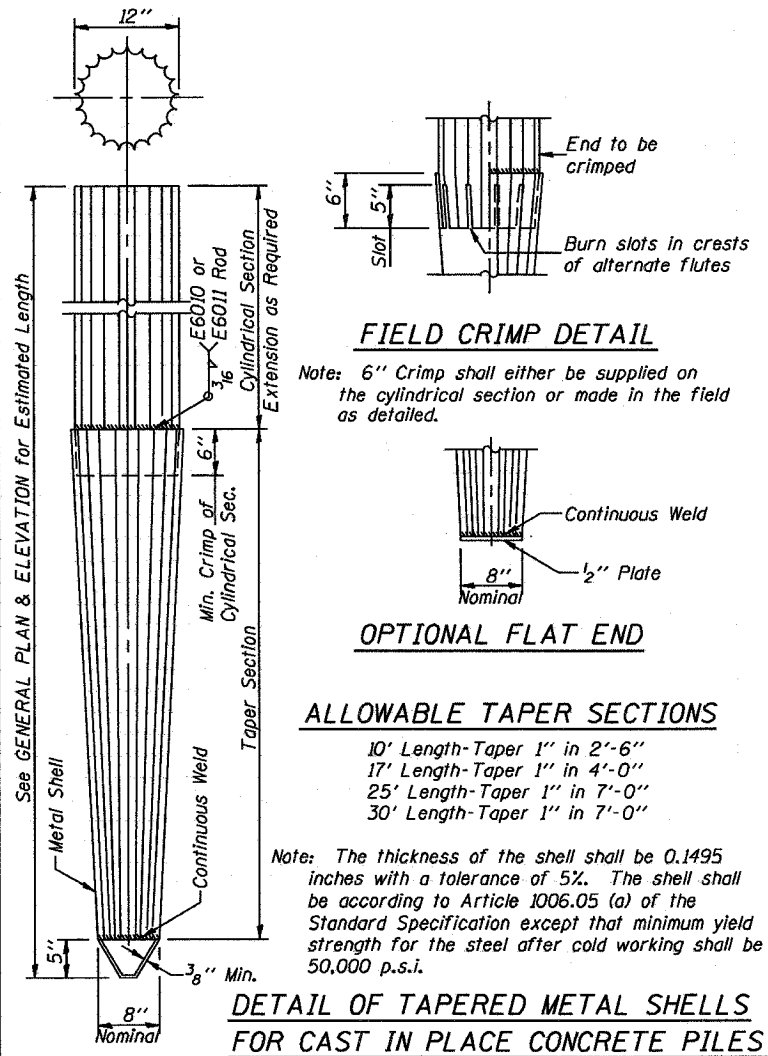
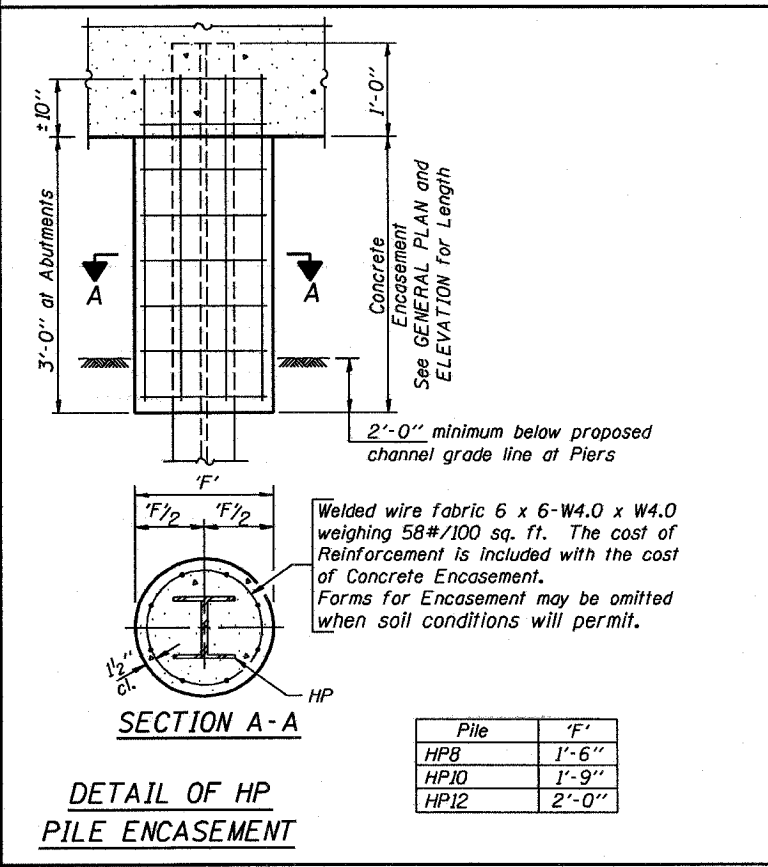
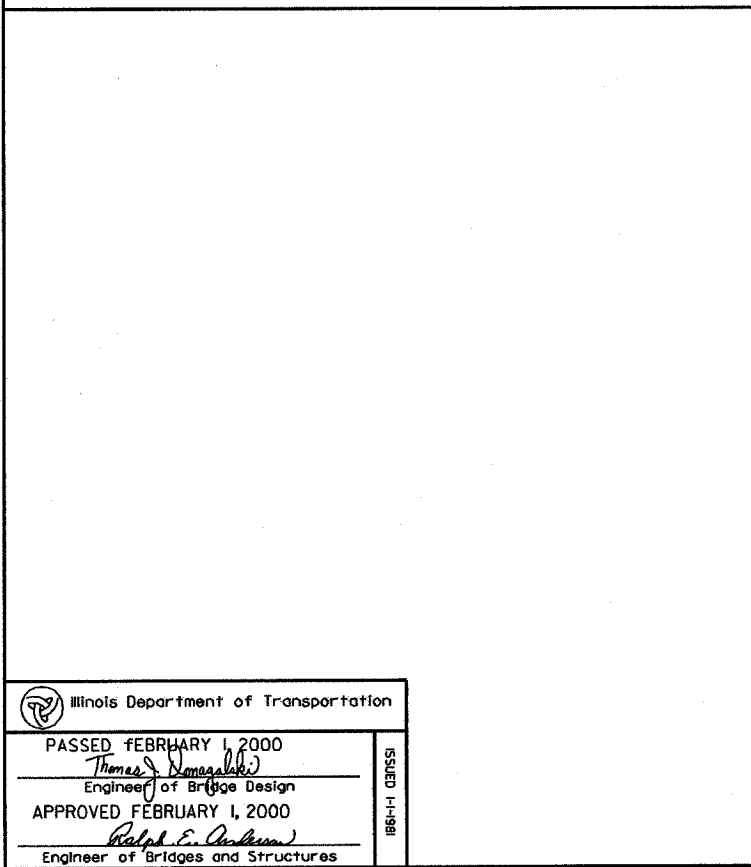
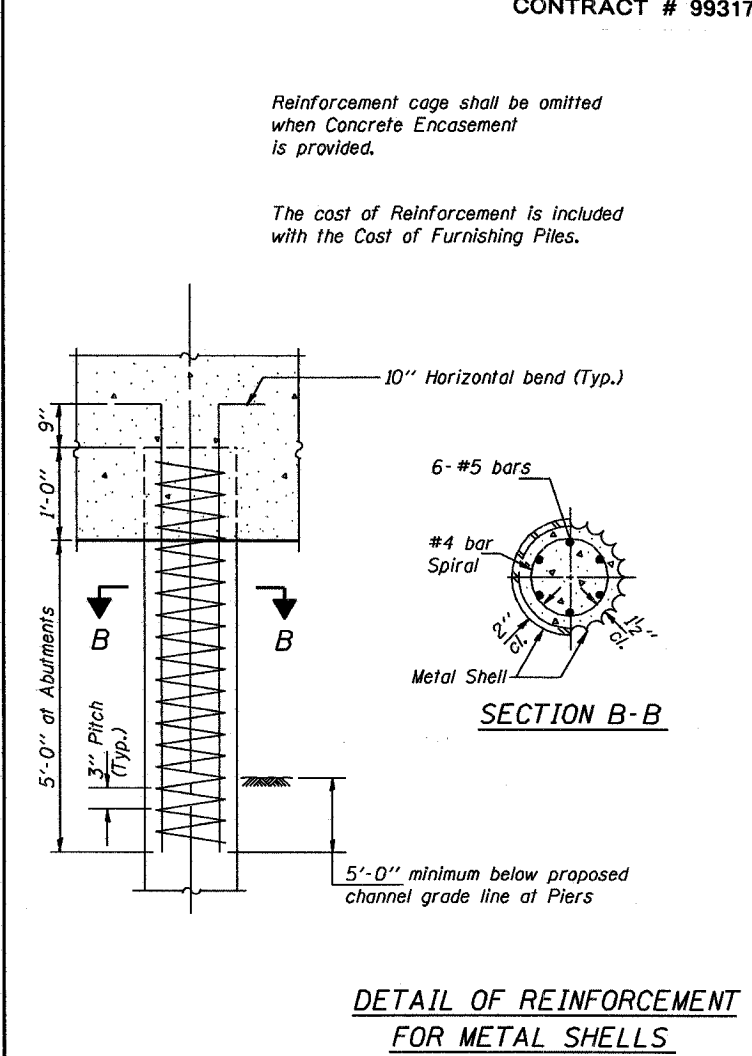
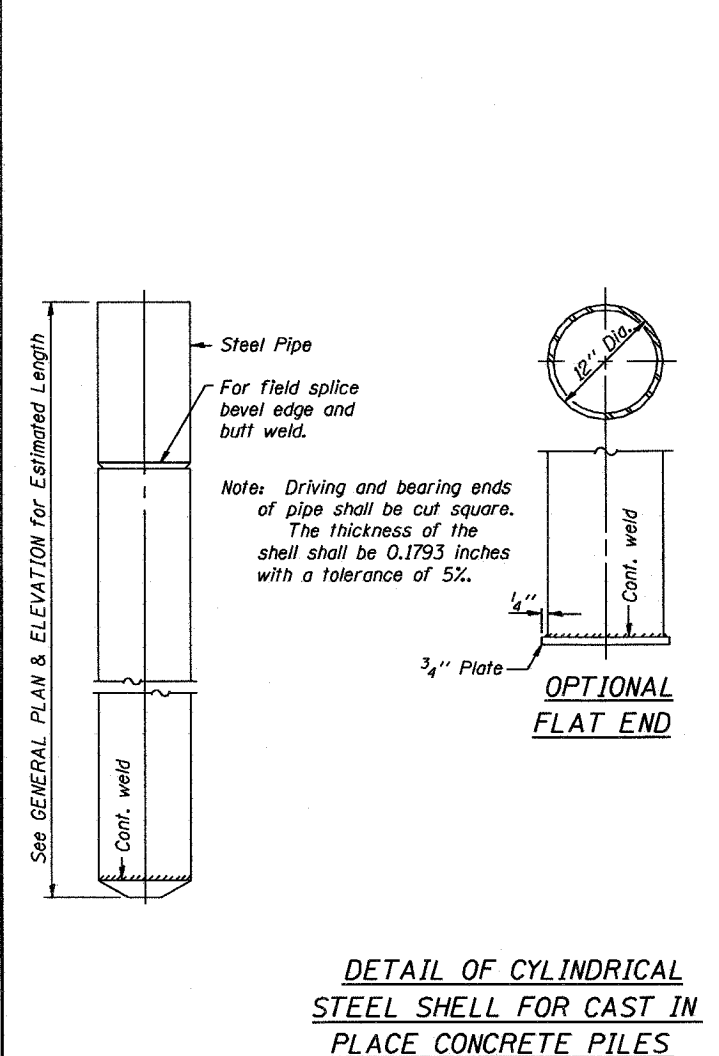


DETAIL OF PRECAST CONCRETE PILES



DETAIL OF TAPERED METAL SHELLS FOR CAST IN PLACE CONCRETE PILES



QUANTITIES/FT. OF ENCASEMENT (STEEL PILES)

Pile Size	Item	Quantity
HP8	Concrete Encasement	0.063 C.Y.
HP10	Concrete Encasement	0.086 C.Y.
HP12	Concrete Encasement	0.112 C.Y.

(METAL SHELL PILES)

Pile Size	Item	Quantity
12" Dia.	Concrete Encasement	0.087 C.Y.

PILE DETAILS

STANDARD CX-1

Illinois Department of Transportation

PASSED FEBRUARY 1, 2000

Thomas N. Namaszaki
Engineer of Bridge Design

APPROVED FEBRUARY 1, 2000

Ralph E. Anderson
Engineer of Bridges and Structures