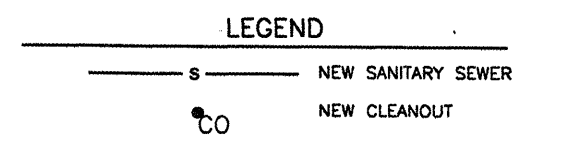
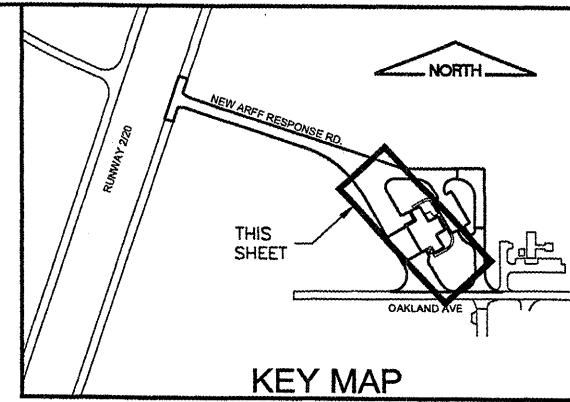
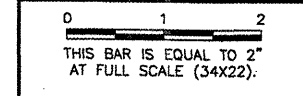


K:\Bloomington\0508509_BMI_ARFF\Draw\Sheets
 FILE: RCp01007.dwg
 UPDATE BY: Kristy Brod
 PLOT DATE: 4/18/2008 8:34 AM
 rprp007
 SURVEY
 SITE KEYMAP
 BASE_PROPGEO
 BASE_PROPUTIL

BL064

REVISIONS		
NUMBER	BY	DATE

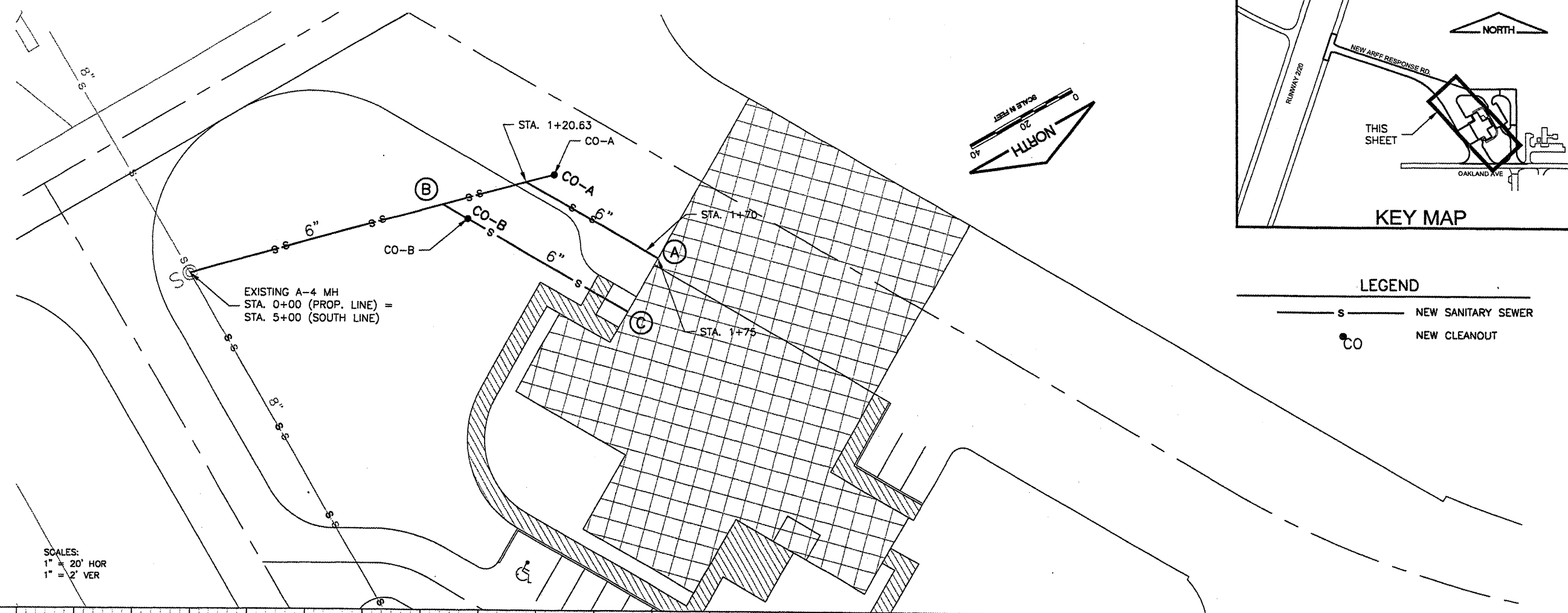


**BLOOMINGTON-NORMAL AIRPORT AUTHORITY
 CENTRAL ILLINOIS REGIONAL AIRPORT
 BLOOMINGTON, ILLINOIS**

**CONSTRUCT NEW ARFF FACILITY
 SANITARY SEWER
 PLAN & PROFILE 1**

© Copyright CMT, Inc.
CMT
 CRAWFORD, MURPHY & TILLY, INC.
 CONSULTING ENGINEERS
 License No. 184-000613

DESIGN BY:	WHP
DRAWN BY:	DPA
CHECKED BY:	RW
APPROVED BY:	RW
DATE:	04/01/2008
JOB No:	0508509
IL PROJ. NO.	BMI-3797
AIP PROJ. NO.	3-17-0006-46 & 48
SHEET 38 OF 66 SHEETS	



SCALES:
 1" = 20' HOR
 1" = 2' VER

