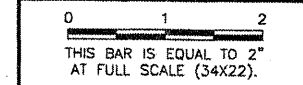


BL064

| REVISIONS | | |
|-----------|----|------|
| NUMBER | BY | DATE |
| | | |
| | | |
| | | |

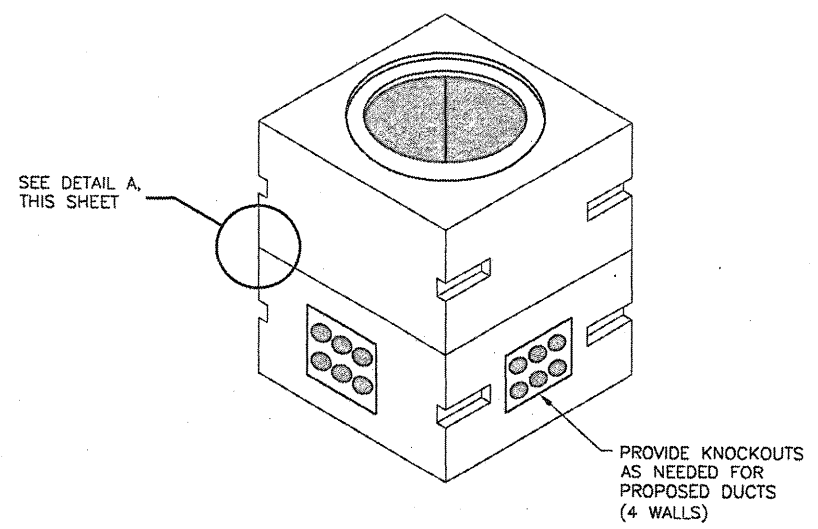


**BLOOMINGTON-NORMAL AIRPORT AUTHORITY
 CENTRAL ILLINOIS REGIONAL AIRPORT
 BLOOMINGTON, ILLINOIS**

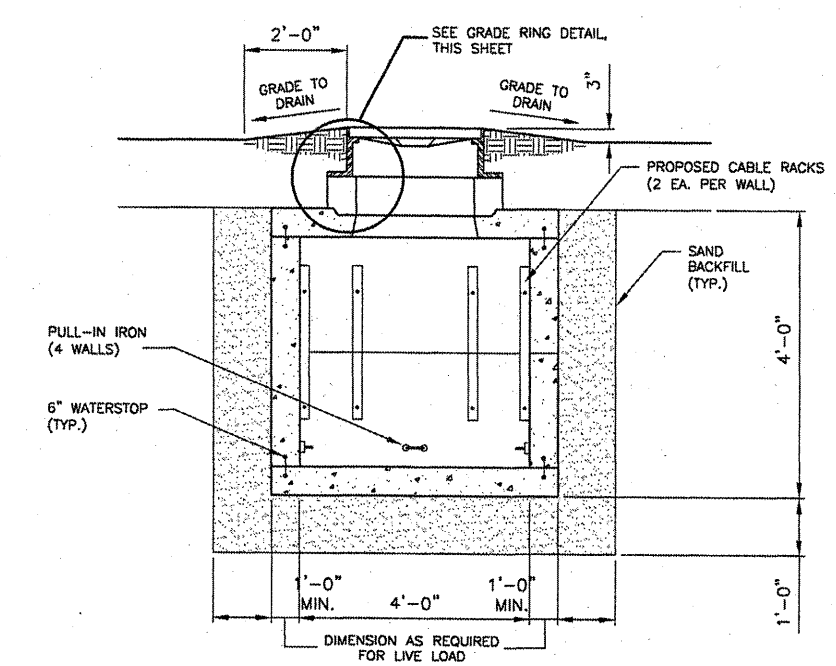
**CONSTRUCT NEW ARFF FACILITY
 ELECTRICAL DETAILS 1**

© Copyright CMT, Inc.
CMT
 CRAWFORD, MURPHY & TILLY, INC.
 CONSULTING ENGINEERS
 License No. 184-000613

| | |
|---------------|-------------------|
| DESIGN BY: | KLB |
| DRAWN BY: | DPA |
| CHECKED BY: | REN |
| APPROVED BY: | REN |
| DATE: | 04/01/2008 |
| JOB No: | 0508509 |
| IL PROJ. NO. | BMI-3797 |
| AIP PROJ. NO. | 3-17-0006-46 & 48 |
| SHEET | 45 OF 66 SHEETS |



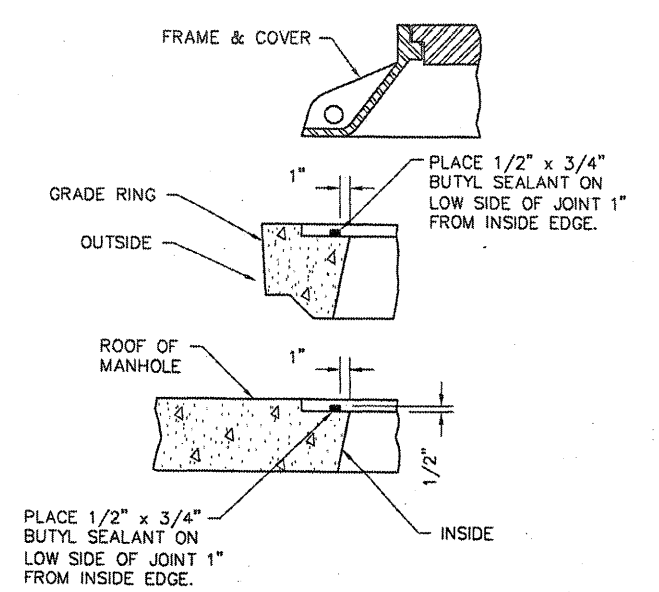
ELECTRICAL HANDHOLE DETAIL
N.T.S.



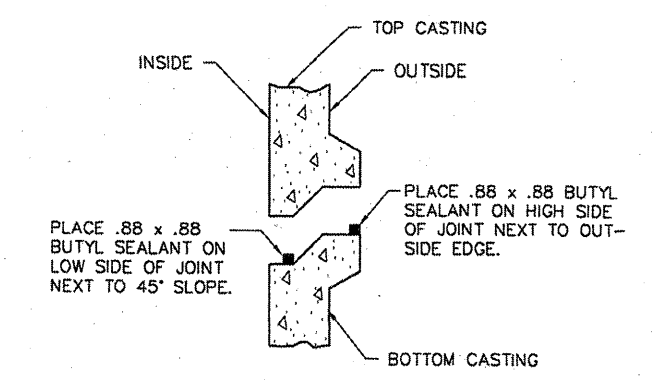
ELECTRICAL HANDHOLE DETAIL
N.T.S.

ELECTRICAL HANDHOLE NOTES

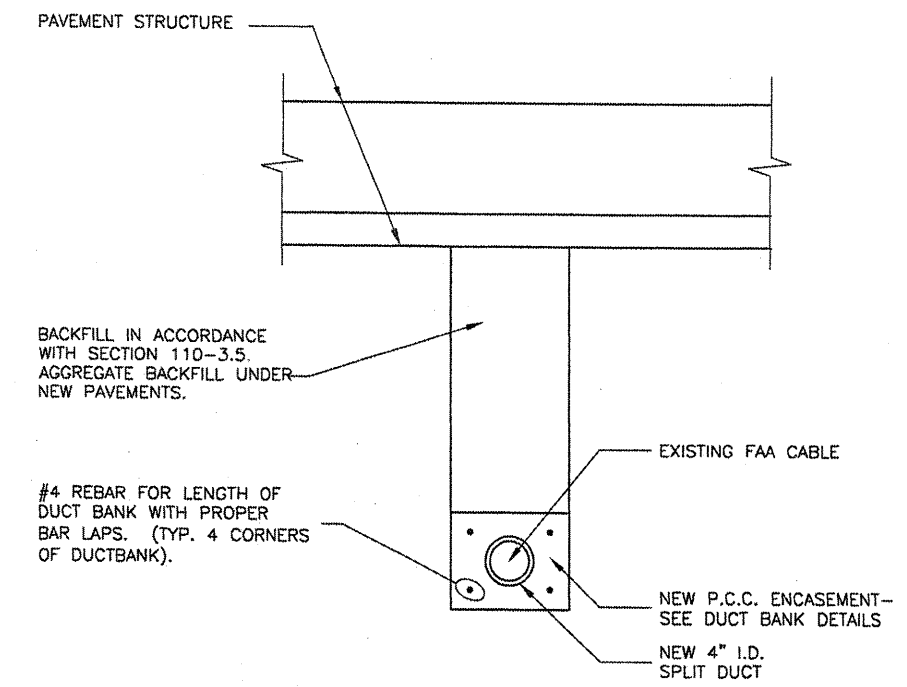
- THE MANHOLE/GRADE RING/MANHOLE LID ASSEMBLY SHALL BE CONSTRUCTED TO MEET OR EXCEED THE FOLLOWING LOADINGS:
 - EARTHLOAD = 2 FEET FILL AT 130 LBS/FT³.
 - SURCHARD = 2 FEET FILL AT 130 LBS/FT³.
 - LIVE LOAD = A.A.S.H.T.O. HS-20 TRUCK WITH 20% IMPACT
 - f'c = 4,500 P.S.I.
 - fy = 60,000 P.S.I.
 - ULTIMATE STRENGTH DESIGN METHOD
 THE SUPPLIER SHALL PROVIDE CERTIFICATION THAT THE MANHOLES MEET OR EXCEED THESE REQUIREMENTS PRIOR TO INSTALLATION.
- THE MANHOLE CONSTRUCTION AND INSTALLATION SHALL BE WATERTIGHT. ALL CONSTRUCTION JOINTS AND DUCTS SHALL BE SEALED TO PREVENT WATER ENTRY. ALL UNUSED DUCT BANK OPENINGS IN MANHOLES SHALL BE SEALED WITH METAL PLATES TREATED FOR CORROSION RESISTANCE AND BOLTED INTO PLACE. MATING SURFACES SHALL BE SEALED USING BUTYL SEALANT.
- THE MANHOLE LID ASSEMBLY SHALL BE INSTALLED SLIGHTLY ABOVE THE SURROUNDING FINAL GRADE AND THE EARTH SHALL BE GRADED UP TO IT.
- THE MANHOLE LID SHALL BE LOCKABLE UTILIZING A PENTAGON BOLT ASSEMBLY.
- PROPOSED ELECTRICAL HANDHOLES SHALL BE THE FOLLOWING INTERIOR DIMENSIONS:
 ELECTRICAL HANDHOLE - 4' = 4' L x 4' W x 4' H



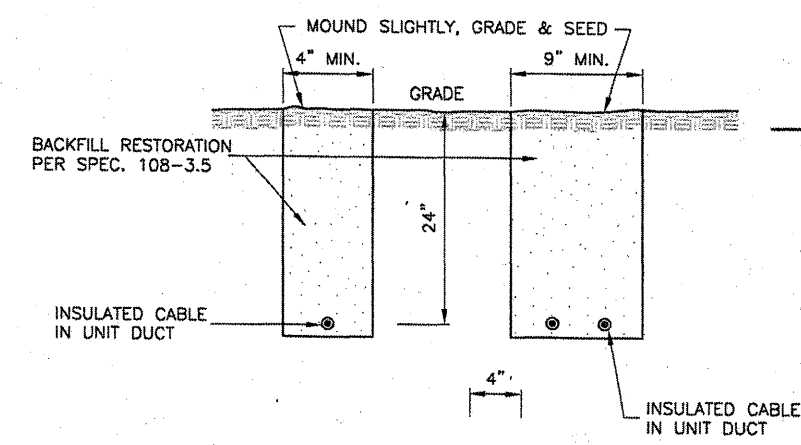
GRADE RING DETAIL
N.T.S.



DETAIL A
N.T.S.



SPLIT DUCT DETAIL
N.T.S.



TRENCH DETAIL
N.T.S.

NOTES

- TRENCHES WITH MORE THAN 2 CABLES SHALL BE INCREASED 3" IN WIDTH FOR EACH ADDITIONAL CABLE. IF SPECIFIED ON PLANS, TWO PARALLEL TRENCHES MAY BE CONSTRUCTED.
- DEPTH OF TRENCHES SHALL BE AS SHOWN ABOVE UNLESS OTHERWISE SPECIFIED ON THE PLANS.
- SAND BACKFILL SHALL BE USED IF THE EXISTING SOIL DOES NOT MEET THE BACKFILL REQUIREMENTS.
- ALL DISTURBED SURFACES SHALL BE RESTORED TO THEIR ORIGINAL CONDITION. COST IS INCIDENTAL TO ITEM 108.