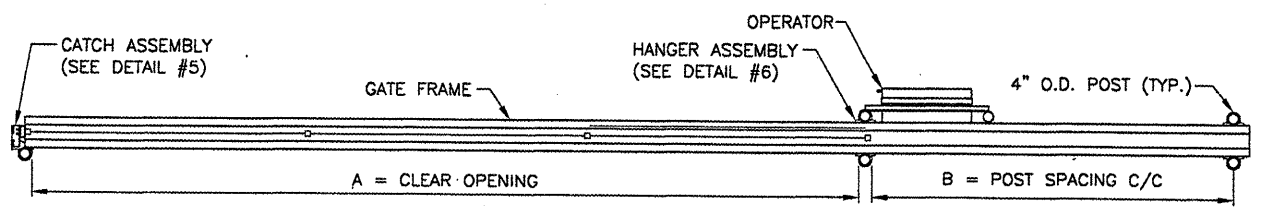
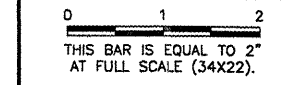
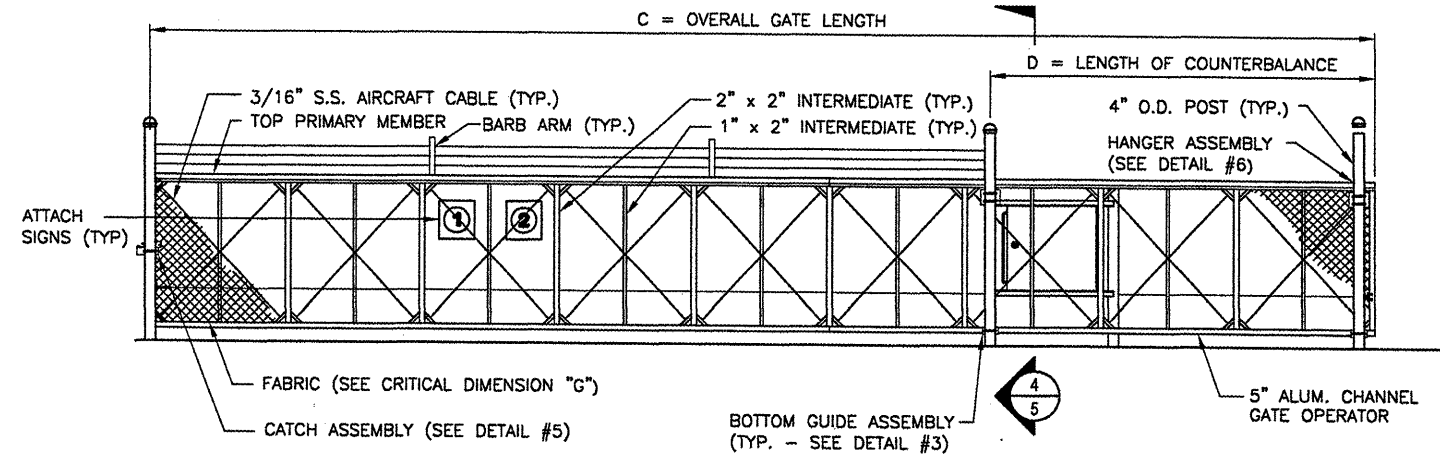


BL064

REVISIONS		
NUMBER	BY	DATE



1 PLAN VIEW
 SCALE: N.T.S.

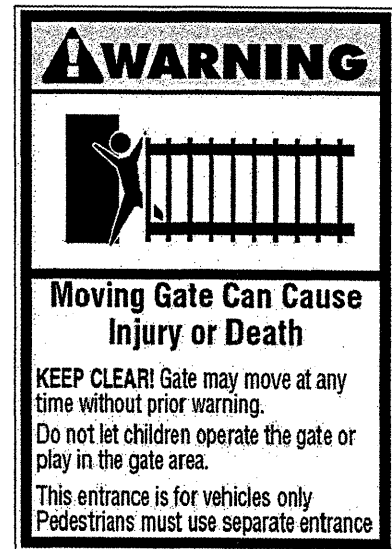


2 ELEVATION
 Scale: N.T.S.

CANTILEVER SLIDE GATE CRITICAL DIMENSION CHART		
A	CLEAR OPENING	30'-0"
B	COUNTERBALANCE POST SPACING C/C	14'-1"
C	OVERALL GATE LENGTH	45'-0"
D	COUNTERBALANCE LENGTH	15'-0"
E	NOMINAL GATE HEIGHT	10'-0"
F	POST HEIGHT	10'-6"
G	FABRIC HEIGHT	9'-0"

SIGNALS					
CONTRACTOR SHALL FURNISH AND INSTALL SIGNS AS INDICATED IN TABLE BELOW					
SIGN	DIMENSIONS	BACKGROUND COLOR	LETTERING COLOR	LETTERING HEIGHT	TEXT
1	24' x 18"	WHITE	RED	1.5"	FAA REGULATIONS REQUIRE THAT AFTER ENTERING OR EXITING THROUGH THIS SECURITY GATE YOU ARE REQUIRED TO WAIT UNTIL THE GATE CLOSES BEFORE PROCEEDING. FINES OR PENALTIES WILL BE IMPOSED.
2	SEE WARNING SIGN DETAIL				

NOTES
 1) SIGNS SHALL BE INSTALLED ON BOTH SIDES OF GATE.



WARNING SIGN DETAIL

UL 235 COMPLIANCE NOTES

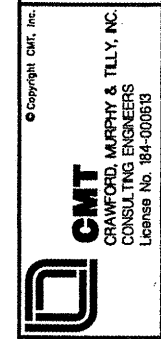
- GATE INSTALLATION SHALL COMPLY WITH ALL REQUIREMENTS OF UL 235, INCLUDING, BUT NOT LIMITED TO:
- ALL OPENINGS OF THE SLIDE GATE ARE GUARDED OR SCREENED FROM THE BOTTOM OF THE GATE TO A MINIMUM OF 4 FEET ABOVE GROUND TO PREVENT A 2-1/4" DIAMETER SPHERE FROM PASSING THROUGH THE OPENINGS ANYWHERE IN THE GATE, AND IN THAT PORTION OF THE ADJACENT FENCE THAT THE GATE COVERS IN THE OPEN POSITION.
 - ALL EXPOSED PINCH POINTS ARE ELIMINATED OR GUARDED AND GUARDING IS SUPPLIED FOR ALL EXPOSED ROLLERS.
 - A WARNING SIGN (SEE DETAIL, THIS SHEET) MUST BE AFFIXED TO BOTH SIDES OF THE SLIDE GATE.
 - FOR ADDITIONAL UL 235 REQUIREMENTS FOR THIS GATE INSTALLATION, SEE GATE OPERATOR DETAILS SHEET.

NOTES

- CANTILEVERED GATE SHALL BE SUFFICIENTLY RIGID TO WITHSTAND FLEXING OR BENDING DURING WINDY CONDITIONS. CONTRACTOR SHALL PROVIDE STIFFENERS, STRUCTURAL SHAPES IN EXCESS OF THE MINIMUM SPECIFIED DIMENSIONS OR ADDITIONAL ROLLERS AND POSTS SUFFICIENT TO PREVENT DISPLACEMENT OF THE GATE BY WIND OR BY UNAUTHORIZED PERSONNEL.
- CONTRACTOR SHALL PROVIDE AND INSTALL GATE AS COMPLETE WORKING UNIT. THE GATE WORK SHALL INCLUDE, BUT NOT BE LIMITED TO: GATE, OPERATOR, DIGITAL CODE CONTROL AND POWER CABLES, CONDUIT, TRENCHING, CIRCUIT BREAKERS, AND ALL CONNECTIONS, LABOR AND MATERIALS NECESSARY TO COMPLETE OPERATION.
- LOCATION OF THE GATE OPERATOR SHALL BE AS RECOMMENDED BY THE MANUFACTURER.
- PIPE BOLLARDS SHALL BE INSTALLED AT LOCATIONS SHOWN IN PLAN VIEW.
- THE FABRIC TYPE AND FINISH OF THE GATE, MATCH WITH PROPOSED FENCE OR AS DIRECTED BY THE ENGINEER.
- ALL SLIDING GATES SHALL HAVE ALL ROLLERS ENCLOSED IN STEEL OR PLASTIC SHROUDS TO PREVENT ACCIDENTAL INJURY.

LOCATIONS, DETAILS AND CHARACTER OF EQUIPMENT SHOWN ON THIS SHEET IS GENERIC. EQUIPMENT LOCATIONS SHALL BE AS RECOMMENDED BY THE EQUIPMENT MANUFACTURER.

**BLOOMINGTON-NORMAL AIRPORT AUTHORITY
 CENTRAL ILLINOIS REGIONAL AIRPORT
 BLOOMINGTON, ILLINOIS**
**CONSTRUCT NEW ARFF FACILITY
 ELECTRIC GATE DETAILS 1**



DESIGN BY:	WDP
DRAWN BY:	CMT
CHECKED BY:	RLW
APPROVED BY:	RLW
DATE:	04/01/2008
JOB No:	0508509
IL PROJ. NO.	BMI-3797
AIP PROJ. NO.	3-17-0006-46 & 48
SHEET	51 OF 66 SHEETS