

NOTES:  
DETAIL NUMBERS INDICATE NO. OF CABLES.

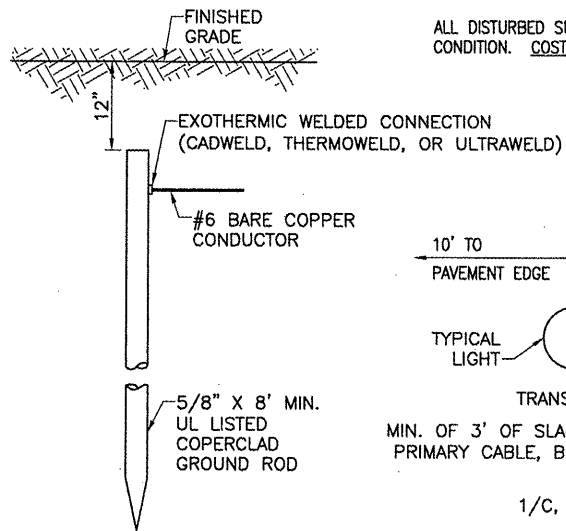
TRENCHES WITH MORE THAN SEVEN CABLES SHALL BE INCREASED 3" IN WIDTH FOR EACH ADDITIONAL CABLE; IF SPECIFIED ON PLANS TWO PARALLEL TRENCHES MAY BE CONSTRUCTED.

DEPTH OF TRENCHES SHALL BE AS SHOWN ABOVE UNLESS OTHERWISE SPECIFIED ON THE PLANS.

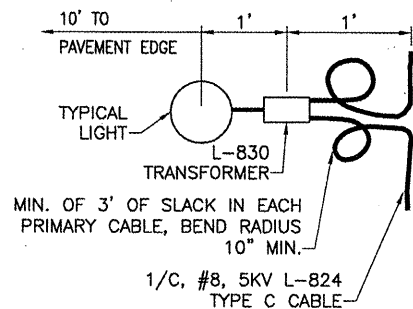
ALL DISTURBED SURFACES SHALL BE RESTORED TO THEIR ORIGINAL CONDITION. COST IS INCIDENTAL TO TRENCH.

EARTH BACKFILL WILL HAVE MAXIMUM 1" SIZE PARTICLES AND WILL BE PLACED IN TWO LIFTS AS APPROXIMATELY SHOWN (TYPICAL FOR ALL TRENCHES)

CABLES INSIDE UNIT DUCT AS SHOWN ON PROPOSED LIGHTING LAYOUT SHEET(S)



**CABLE TRENCHES**  
(NOT TO SCALE)



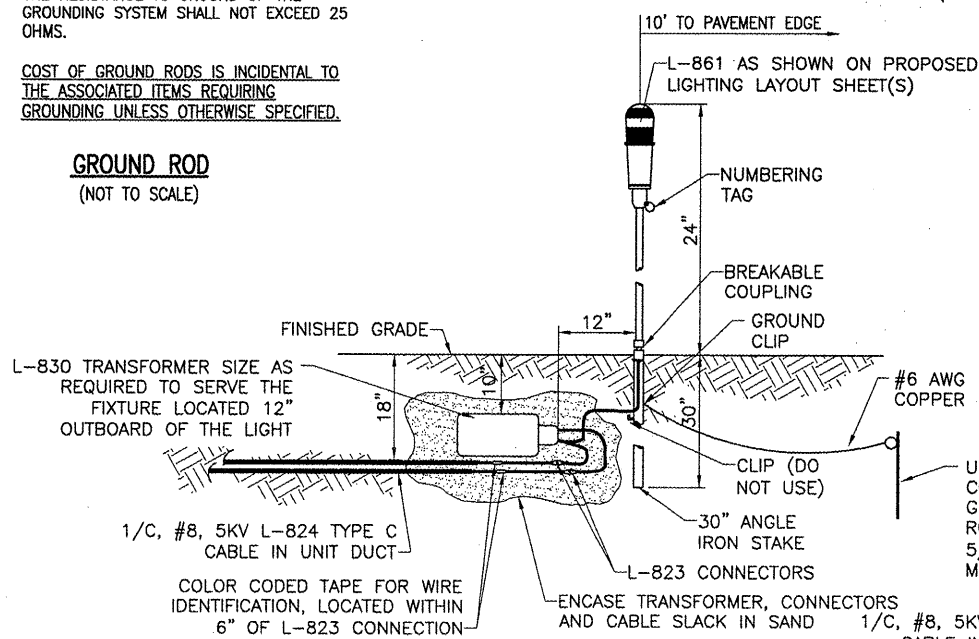
**PLAN VIEW**

NOTES:  
TYPE AND MINIMUM NUMBER OF GROUND RODS SHALL BE AS SPECIFIED ON THE PLAN.

THE RESISTANCE TO GROUND OF THE GROUNDING SYSTEM SHALL NOT EXCEED 25 OHMS.

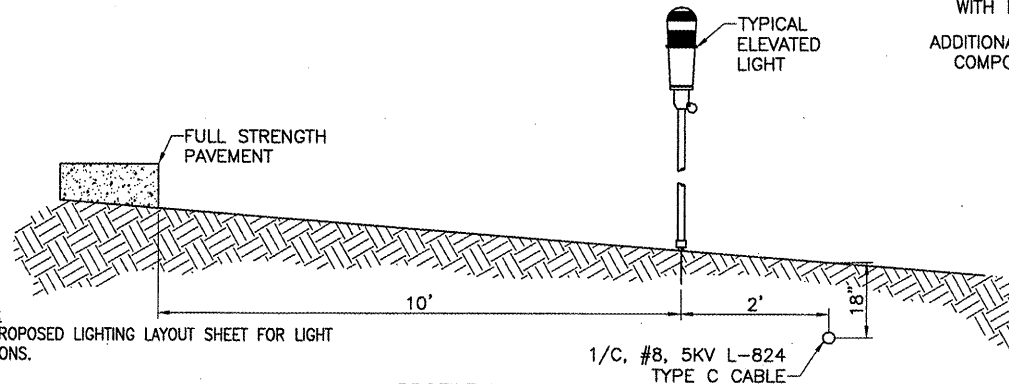
COST OF GROUND RODS IS INCIDENTAL TO THE ASSOCIATED ITEMS REQUIRING GROUNDING UNLESS OTHERWISE SPECIFIED.

**GROUND ROD**  
(NOT TO SCALE)



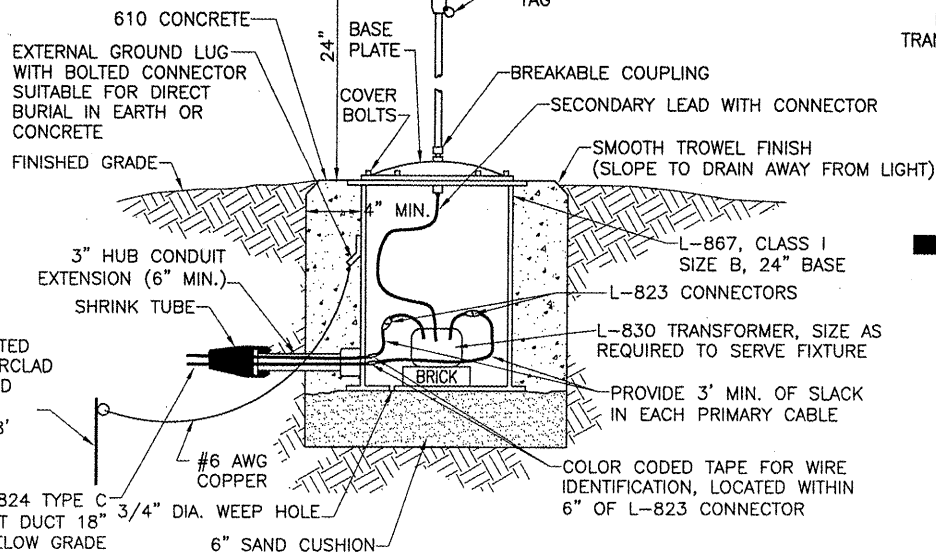
**MEDIUM INTENSITY LIGHT - STAKE MOUNTED**  
(NOT TO SCALE)

RUNWAY & TAXIWAY EDGE LIGHTS ARE EXISTING. DETAILS ARE SHOWN TO PROVIDE INFORMATION ON CONNECTING HOMERUN CABLES FOR AIRFIELD LIGHTING CIRCUITS.

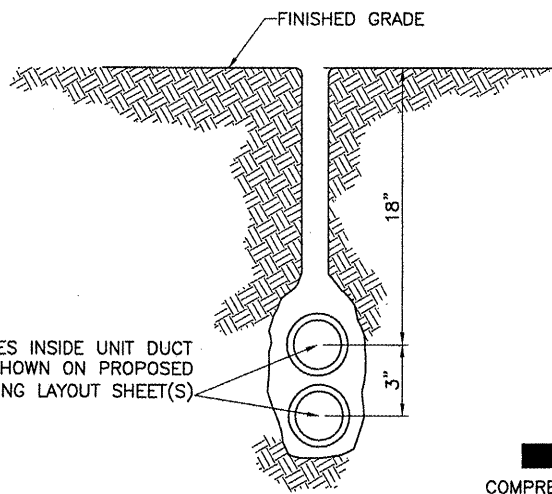


**PROFILE VIEW**

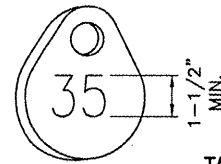
**LIGHT AND CABLE INSTALLATION DETAIL**  
(NOT TO SCALE)



**MEDIUM/HIGH INTENSITY LIGHT - BASE MOUNTED**  
(NOT TO SCALE)

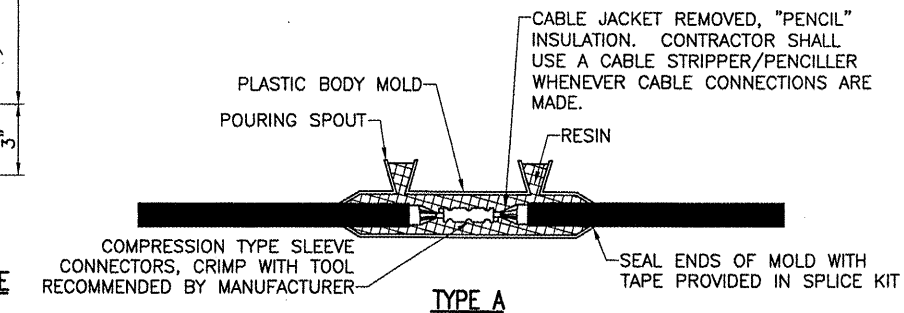


**PLOWED CABLE**  
(NOT TO SCALE)

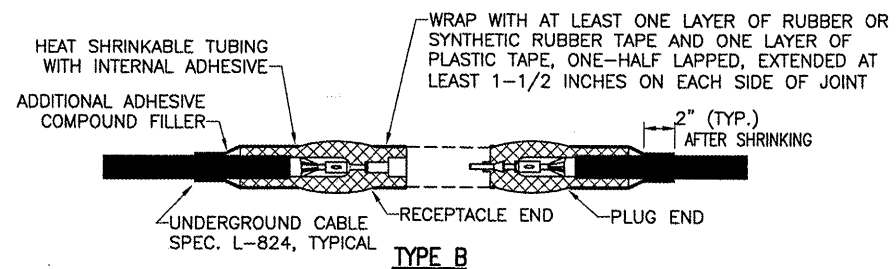


**TAG DETAIL**  
(NOT TO SCALE)

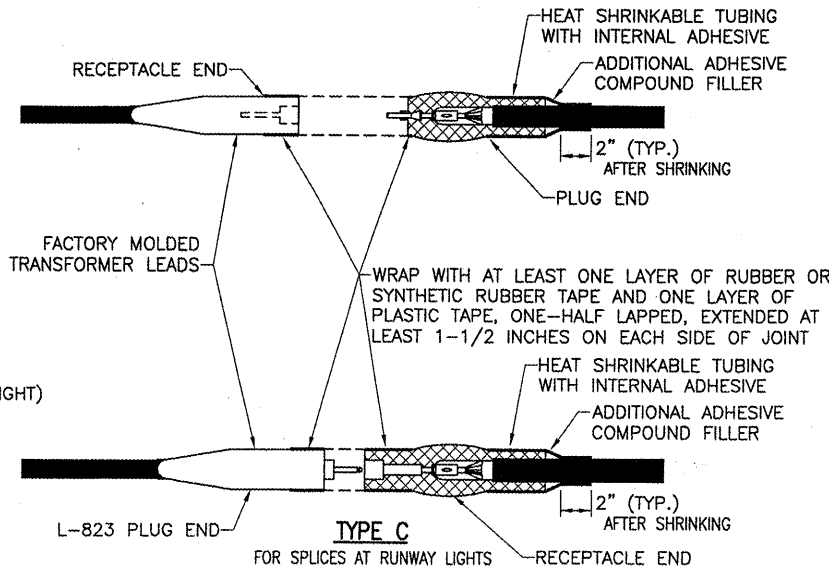
NOTE:  
AFFIX NON-CORROSIVE TAG TO FIXTURE FACING RUNWAY WITH SET SCREW, WIRE TIE, OR METAL BAND. NUMERALS SHALL BE ENGRAVED FOR PERMANENT READABILITY.



**TYPE A**  
FOR SPLICES IN HOMERUNS FOR EXTENSIONS TO EXISTING CABLES ONLY



**TYPE B**  
FOR SPLICES AT JUNCTION OF HOMERUN WITH LOOP CIRCUIT



NOTES:  
SEE PROPOSED LIGHTING LAYOUT SHEET(S) FOR SPLICE TYPE.

INSIDE DIAMETER OF CONNECTOR SHALL PROPERLY MATCH THE OUTSIDE DIAMETER OF CABLE.

**CABLE SPLICES**  
(NOT TO SCALE)

REVISION	DATE	BY

COLES COUNTY AIRPORT AUTHORITY  
COLES COUNTY MEMORIAL AIRPORT

IL PROJ.: MTO-3762 A.I.P. PROJ.: 3-17-0066-B20

REVISION	DATE	BY

**HANSON**  
Hanson Professional Services Inc.  
1525 South Sixth Street  
Springfield, Illinois 62703-2886  
Chicago Nationwide

REPLACE ELECTRICAL DUCT IN FRONTAL AREA  
PROPOSED ELECTRICAL DETAILS SHEET 2

MAY 14, 2008 12:46 PM KINCA00394 I:\AIRPORTS\COLES\07A0101\CAD\SHEETS\R-54SELE.DWG - ELECTRICAL\_DETAILS