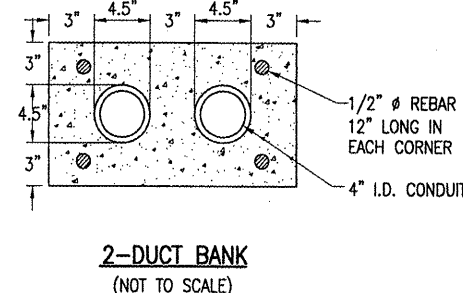
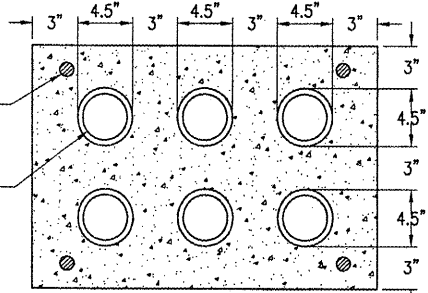


TYPICAL SECTION
(NOT TO SCALE)



2-DUCT BANK
(NOT TO SCALE)



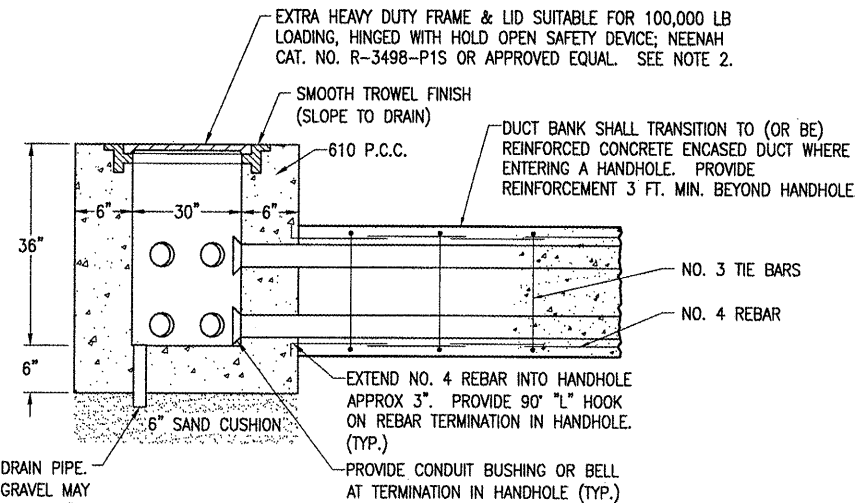
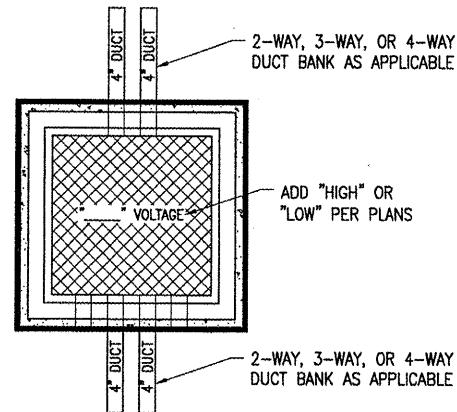
6-DUCT BANK
(NOT TO SCALE)

DUCT BANK NOTES:

1. ALL DIMENSION ARE MINIMUM.
2. INCLUDE DUCT SPACERS AS MANUFACTURED BY UNDERGROUND DEVICES INC., TO MAINTAIN PROPER SEPARATION OF CONDUITS.
3. REBAR IS REQUIRED TO ACCOMODATE FUTURE DUCT EXTENSIONS & INTERFACE AT DUCT BANK TERMINATIONS. DUCT BANKS TERMINATING IN MANHOLES DO NOT REQUIRE REBAR AT TERMINATIONS.
4. CONDUITS FOR CONCRETE ENCASED DUCT SHALL BE SCHEDULE 40 PVC CONFORMING TO ITEM 110.
5. MINIMUM DEPTH OF TOP OF DUCT ENCASEMENT SHALL BE 30" BELOW FINISHED GRADE.
6. HIGH VOLTAGE AND LOW VOLTAGE CIRCUITS SHALL NOT BE INSTALLED IN THE SAME RACEWAY, CONDUIT, DUCT, HANDHOLE, OR MANHOLE.
7. HOMERUN CABLES FOR A RESPECTIVE CIRCUIT SHALL BE INSTALLED IN THE SAME RACEWAY OR DUCT.

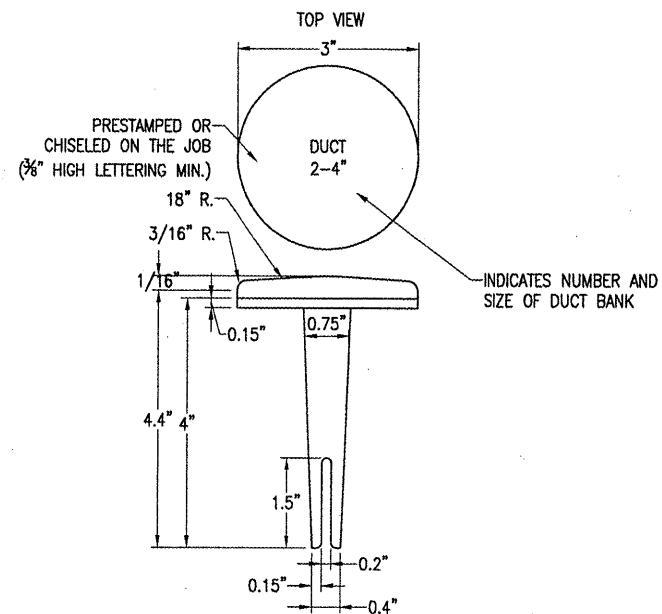
CABLE & DUCT MARKER NOTES:

1. THE COST OF ALL TURF AND PAVEMENT DUCT MARKERS SHALL BE INCIDENTAL TO THE DUCT. THE COST OF ALL CABLE MARKERS SHALL BE INCIDENTAL TO THE CABLE.
2. BITUMINOUS PAVEMENT DUCT MARKER AND CONCRETE DUCT MARKER TO BE PROVIDED AT EACH END OF EACH DUCT AS SHOWN ON THE LOCATION PLAN. FOR CONCRETE PAVEMENT, THE LETTER "D" SHALL BE IMPRESSED IN THE PAVEMENT INSTEAD OF THE MARKER. THE LETTER SHALL BE IMPRFORMED AS DESCRIBED IN NOTE 4.
3. CABLE MARKERS SHALL BE PLACED AT CHANGES OF DIRECTION AND APPROXIMATELY EVERY 200' ALONG CABLE RUNS.
4. CONCRETE CABLE MARKERS AND DUCT MARKERS SHALL HAVE LETTERS 4" HIGH, 3" WIDE WITH WIDTH OF STROKE 1/2" AND 1/4" DEEP. ALL LETTERS, NUMBERS AND ARROWS TO BE IMPRESSED.



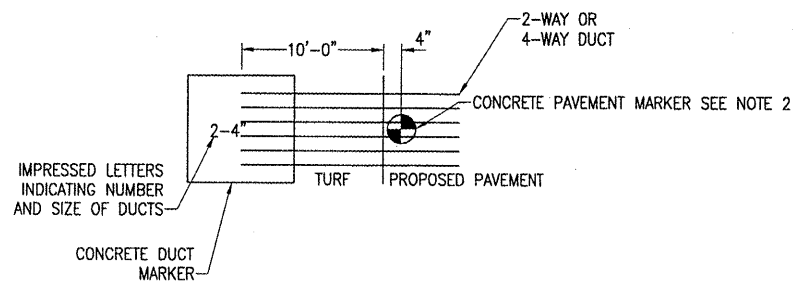
ELECTRICAL HANDHOLE
(NOT TO SCALE)

- NOTES:
1. LIDS FOR LOW VOLTAGE HANDHOLES SHALL BE LABELED "LOW VOLTAGE". LIDS FOR HIGH VOLTAGE HANDHOLES SHALL BE LABELED "HIGH VOLTAGE". COORDINATE LETTERING WITH MFR.
 2. ELECTRICAL HANDHOLE FRAME & LID SHALL BE CAPABLE OF WITHSTANDING MINIMUM 100,000 POUND LOADS AS CALLED FOR IN FAA ADVISORY CIRCULAR AC 150/5320-6D APPENDIX 3 ITEM 2.d. (1). AIRPORT MANHOLE FRAME & LID SHALL BE NEENAH CATALOG NO. R-3498-P1S OR APPROVED EQUAL.
 3. REINFORCING FOR DUCT BANK SHALL CONSIST OF NO. 4 DEFORMED REBARS SPACED SIX INCHES (6") ON CENTER, PARALLELING THE DUCTS ON TOP AND BOTTOM WITH NO. 3 FORMED TIE BARS SPACED 12" ON CENTERS. BARS SHALL OVERLAP 1'-8" MIN. REINFORCING SHALL EXTEND THREE FEET BEYOND INTERFACE TO HANDHOLE.
 4. HANDHOLES WILL BE PAID FOR UNDER ITEM AR110610 ELECTRICAL HANDHOLE PER EACH. SEE SPECIAL PROVISIONS

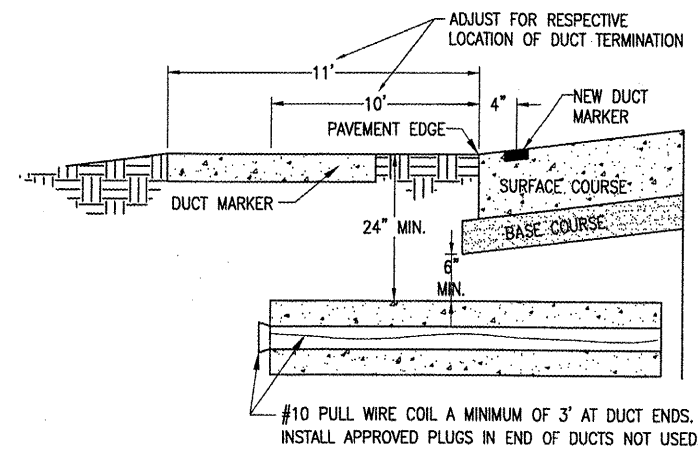


BITUMINOUS PAVEMENT DUCT MARKERS
(NOT TO SCALE)

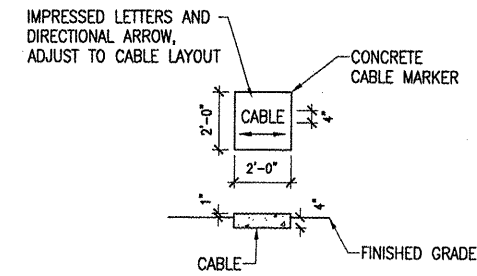
NOTE:
TOP OF MARKER SHALL BE FLUSH WITH FINISHED PAVEMENT SURFACE. MARKER MAY BE INSTALLED IN A DRILLED HOLE AND SECURED WITH EPOXY GLUE.



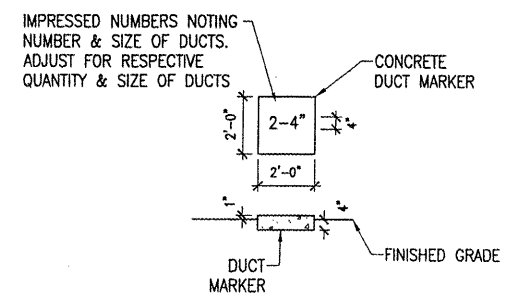
DUCT MARKER DETAIL
(NOT TO SCALE)



UNDERGROUND ELECTRICAL DUCT
(NOT TO SCALE)



TURF CABLE MARKERS
(NOT TO SCALE)



TURF DUCT MARKERS
(NOT TO SCALE)

BY	
REVISION	
DATE	

COLES COUNTY AIRPORT
A.I.P. PROJ.: 3-17-0066-B20
MTO-3762

Project No.	07A0101D_0800
Filename	R-543ELE.DWG
Scale	NO SCALE
Date	04/04/08
LAYOUT	KNL
DRAWN	MW
REVIEWED	CAH
	03/25/08
	03/25/08
	04/03/08

HANSON
Hanson Professional Services Inc.
1925 South Sixth Street
Springfield, Illinois 62703-2886
Offices Nationwide

REPLACE ELECTRICAL DUCT IN FRONTAL AREA
PROPOSED ELECTRICAL DETAILS
SHEET 3