



HANSON PROFESSIONAL SERVICES INC.

815 Commerce Drive, Suite 200
Oak Brook, Illinois 60523
Telephone: 630.990.3800
Fax: 630.990.3801

Illinois Professional Design Firm
Registration No. 184-001084

© Copyright Hanson Professional Service Inc. 2008

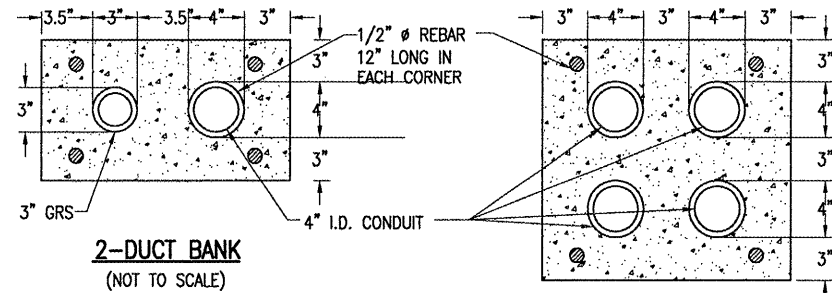


JOLIET REGIONAL PORT DISTRICT

1 George Michas Drive
Romeoville, Illinois 60446
Telephone: 815.838.9497
Fax: 815.838.9524

EXTEND RUNWAY 2-20; CONSTRUCT
TAXIWAY TURNAROUND

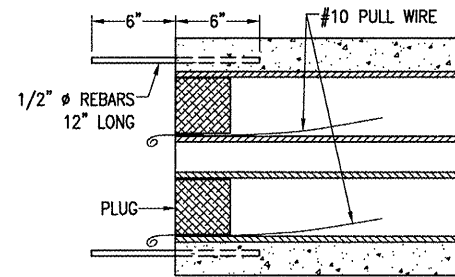
AIP PROJECT NO. 3-17-0140-B42
IDA PROJECT NO. LOT-3792



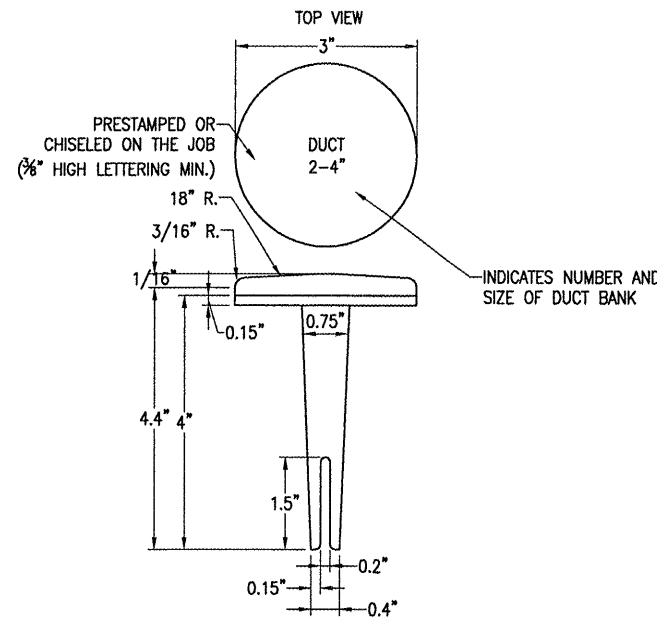
4-DUCT BANK
(NOT TO SCALE)

NOTES:

1. IN 2-WAY DUCT BANK ONE DUCT SHALL BE 3" GRG, AND ONE DUCT SHALL BE 4" PVC. IN 4-DUCT BANK, ALL DUCTS SHALL BE 4" PVC.
2. ALL DIMENSIONS ARE MINIMUM.
3. INCLUDE DUCT SPACERS AS MANUFACTURED BY UNDERGROUND DEVICES INC., TO MAINTAIN PROPER SEPARATION OF CONDUITS.



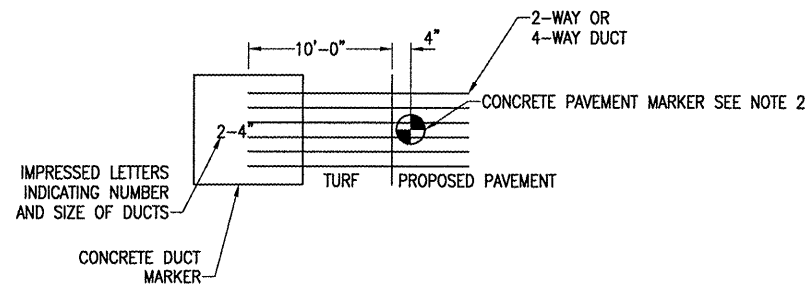
TYPICAL SECTION
(NOT TO SCALE)



BITUMINOUS PAVEMENT DUCT MARKERS
"NOT TO SCALE"

NOTE:

TOP OF MARKER SHALL BE FLUSH WITH FINISHED PAVEMENT SURFACE. MARKER MAY BE INSTALLED IN A DRILLED HOLE AND SECURED WITH EPOXY GLUE.

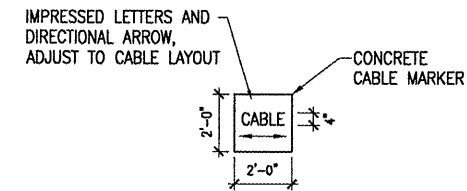


DUCT MARKER DETAIL
"NOT TO SCALE"

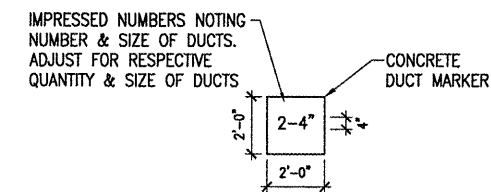
CONCRETE ENCASED DUCT DETAIL
(2-WAY & 4-WAY SHOWN)

NOTES:

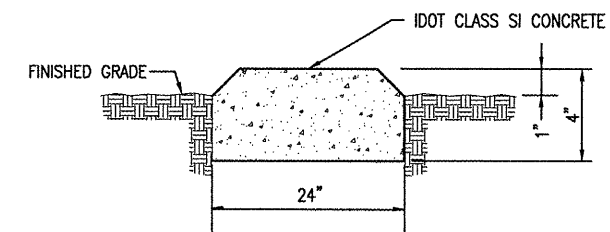
1. THE COST OF ALL TURF AND PAVEMENT DUCT MARKERS SHALL BE INCIDENTAL TO THE DUCT. THE COST OF ALL CABLE MARKERS SHALL BE INCIDENTAL TO THE CABLE.
2. BITUMINOUS PAVEMENT DUCT MARKER AND CONCRETE DUCT MARKER TO BE PROVIDED AT EACH END OF EACH DUCT AS SHOWN ON THE LOCATION PLAN. FOR CONCRETE PAVEMENT, THE LETTER "D" SHALL BE IMPRESSED IN THE PAVEMENT INSTEAD OF THE MARKER. THE LETTER SHALL BE IMPFORMED AS DESCRIBED IN NOTE 4.
3. CABLE MARKERS SHALL BE PLACED AT CHANGES OF DIRECTION AND APPROXIMATELY EVERY 200' ALONG CABLE RUNS.
4. CONCRETE CABLE MARKERS AND DUCT MARKERS SHALL HAVE LETTERS 4" HIGH, 3" WIDE WITH WIDTH OF STROKE 1/2" AND 1/4" DEEP. ALL LETTERS, NUMBERS AND ARROWS TO BE IMPRESSED.



TURF CABLE MARKERS
"NOT TO SCALE"



TURF DUCT MARKERS
"NOT TO SCALE"



CONCRETE MARKER

No.	Drawing Issue Description	Date	By

Date
APRIL 18, 2008
Sheet Title

PROPOSED ELECTRICAL DETAILS SHEET 4

07A0166
Project Number
KNL 03/11/08
Layout By Date
KNL 03/11/08
Designed By Date
RMH 03/20/08
Reviewed By Date
MV
Drawn By Sheet No.

I:\02\085\00840\07A0166\DRAWINGS\SHEETS\00-ELECTRICAL\DETAILS.DWG, APR 18, 2008 10:19AM HANSONDR22