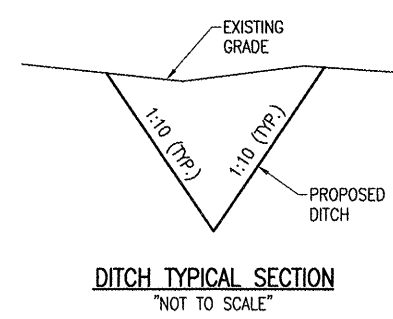
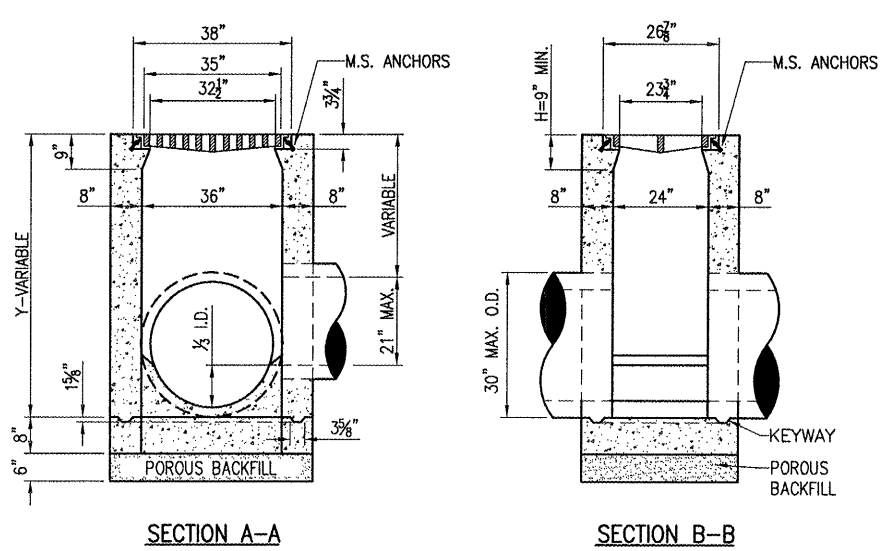


APR 24, 2008 5:08 PM WALLE00723  
I:\AIRPORTS\MACOMB\08A0004\DESIGN\CADD\SHEETS\R-131DRN.DWG - DRAINAGE



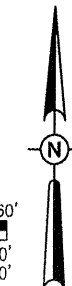
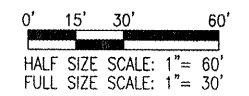
POROUS BACKFILL MATERIAL SHALL CONFORM TO THE REQUIREMENTS OF THE SUPPLEMENTAL SPECIFICATIONS


FRAME AND GRATE SHALL BE NEENAH R-3475, OR APPROVED EQUAL



NOTE: PRECAST END SECTION SHALL BE IN ACCORDANCE WITH IDOT STD 542301-01 FOR USE WITH 18" RCP.

- LEGEND**
- [ ] EXISTING PAVEMENT
  - [ ] PROPOSED IMPROVEMENTS
  - [ ] EXISTING BUILDING
  - EXISTING TOP OF DITCH
  - EXISTING BOTTOM OF DITCH
  - UD --- EXISTING UNDERDRAIN
  - EXISTING STORM SEWER
  - ○ ○ EXISTING UNDERGROUND FUEL TANK
  - [ ] EXISTING INLET
  - SS EXISTING STORM SEWER MANHOLE (TO BE ADJUSTED)
  - [ ] EXISTING FUEL PUMP
  - ⊙ EXISTING FUEL MONITORING WELL
  - SS --- PROPOSED STORM SEWER
  - PROPOSED DITCH
  - [ ] PROPOSED INLET
  - ◀ PROPOSED FLARED END SECTION



BY	
REVISION	
DATE	
MACOMB MUNICIPAL AIRPORT MACOMB, ILLINOIS	
A.I.P. PROJ.: 3-17-0064-B16 IL PROJ.: MOB-3798	
H&H PROJECT No. 08A0004D_0800 Elevation R-131DRN.DWG Scale 1" = 30' Date 03/11/08	
LAYOUT	03/11/08
DRAWN	BAK
REVIEWED	CAH
 Hanson Professional Services, Inc. 1255 S. Springfield, Illinois 62703-2888 Offices Nationwide	
CONSTRUCT RAMP EXPANSION PROPOSED DRAINAGE PLAN	
<span style="font-size: 2em;">8</span> 8 of 32 sheets	