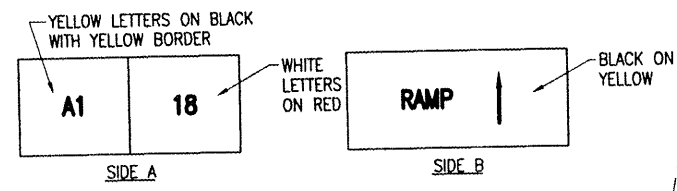


TAXI GUIDANCE SIGN DETAIL "A"
"NOT TO SCALE"



TAXI GUIDANCE SIGN DETAIL "B"
"NOT TO SCALE"

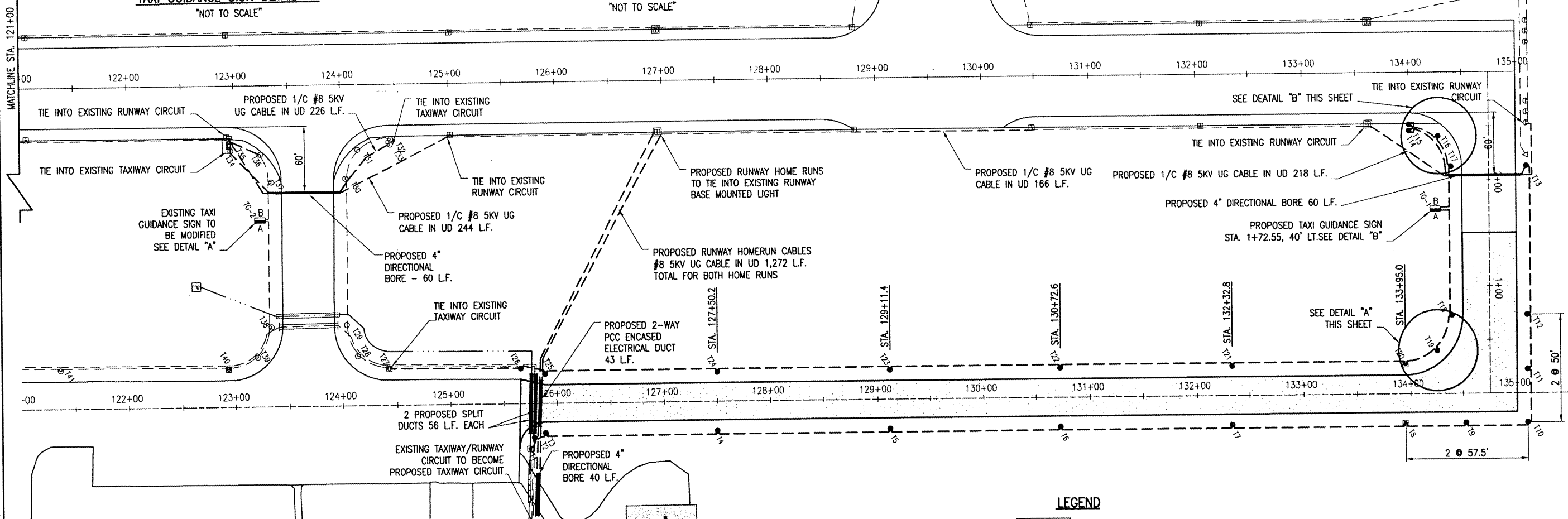
TAXI GUIDANCE SIGN NOTES

ALL PROPOSED TAXI GUIDANCE SIGNS WILL BE LOCATED AS SHOWN ON THIS SHEET.

ALL PROPOSED TAXI GUIDANCE SIGNS WILL BE LOCATED SUCH THAT THE CLOSEST SIDE OF THE SIGN IS 15' FROM THE PAVEMENT EDGE.

ALL SIGNS WILL READ AS DETAILED ON THIS SHEET.

THE PROPOSED TAXI GUIDANCE SIGN WILL BE PAID FOR UNDER THE FOLLOWING ITEM: AR125445 TAXI GUIDANCE SIGN, 5 CHARACTER _____ 1 EACH.



THE LOCATION, SIZE AND TYPE OF MATERIAL OF EXISTING UNDERGROUND UTILITIES INDICATED ON THE PLANS IS NOT REPRESENTED AS BEING ACCURATE, SUFFICIENT OR COMPLETE. IT SHALL BE THE CONTRACTOR'S RESPONSIBILITY TO DETERMINE THE ACTUAL LOCATION OF ALL SUCH FACILITIES, INCLUDING SERVICE CONNECTIONS TO UNDERGROUND UTILITIES. PRIOR TO CONSTRUCTION, THE CONTRACTOR SHALL NOTIFY THE UTILITY COMPANIES OF HIS OPERATIONAL PLANS AND SHALL OBTAIN FROM THE RESPECTIVE UTILITY COMPANIES DETAILED INFORMATION AND ASSISTANCE RELATIVE TO THE LOCATION OF THEIR FACILITIES AND THE WORKING SCHEDULE OF THE COMPANIES FOR REMOVAL OR ADJUSTMENT WHERE REQUIRED. IN THE EVENT AN UNEXPECTED UTILITY INTERFERENCE IS ENCOUNTERED DURING CONSTRUCTION, THE CONTRACTOR SHALL IMMEDIATELY NOTIFY THE UTILITY COMPANY OF JURISDICTION. THE ENGINEER SHALL ALSO BE IMMEDIATELY NOTIFIED. ANY SUCH MAINS AND SERVICES SHALL BE RESTORED TO SERVICE AT ONCE AND PAID FOR BY THE CONTRACTOR AT NO ADDITIONAL COST TO THE CONTRACT.

CALL J.U.L.I.E. FOR UTILITY INFORMATION AT 1-800-892-0123.

CONCRETE SIGN BASE EXTENSION NOTES

THE EXISTING TAXI GUIDANCE SIGNS DESIGNATED FOR BASE EXTENSIONS WILL HAVE THEIR CONCRETE BASES EXTENDED A SUFFICIENT DISTANCE TO PROVIDE A MINIMUM OF 12" OF CONCRETE BASE BEYOND THE EXTENDED SIGN.

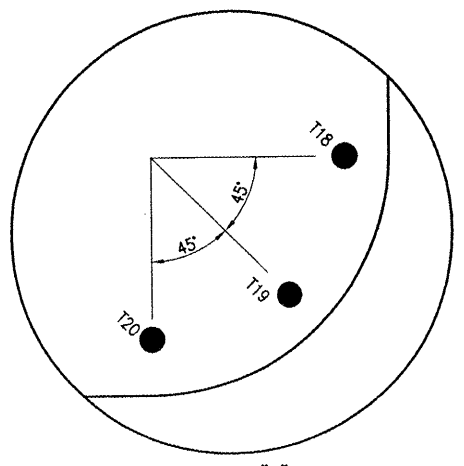
THE CONCRETE SHALL MEET THE REQUIREMENTS OF ITEM 610 "STRUCTURAL PORTLAND CEMENT CONCRETE".

THE CONTRACTOR WILL DRILL THREE NO. 3 RE-BAR (8" LONG) INTO THE FACE OF THE EXISTING CONCRETE PAD. ONE HALF OF THE RE-BAR WILL BE GROUTED INTO THE EXISTING CONCRETE PAD. THE RE-BAR WILL TIE THE EXISTING AND PROPOSED CONCRETE PADS TOGETHER.

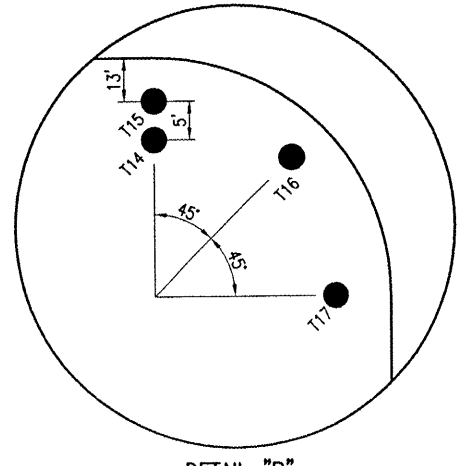
6" x 6" NO. 6 WIRE MESH WILL ALSO BE PLACED IN THE EXTENDED CONCRETE BASE.

THE EXTENSION OF THE CONCRETE BASE WILL BE CONSIDERED AS AN INCIDENTAL ITEM TO ADDITION OF A MODULE TO THE EXISTING SIGN AND WILL BE PAID FOR UNDER ITEMS:

AR800401 "ADD 1 MODULE WITH SIGN BASE EXTENSION" _____ EACH.



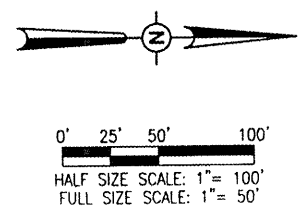
DETAIL "A"
"NOT TO SCALE"



DETAIL "B"
"NOT TO SCALE"

LEGEND

- EXISTING IMPROVEMENTS
- EXISTING BUILDINGS
- EXISTING TAXIWAY/RUNWAY CIRCUIT TO BECOME PROPOSED TAXIWAY CIRCUIT
- EXISTING 4/C #6 XLP-USE 600V UG CABLE IN UD (WIND CONE CIRCUIT)
- EXISTING 4" DIRECTIONAL BORE
- EXISTING BASE MOUNTED RUNWAY LIGHT
- EXISTING STAKE MOUNTED RUNWAY LIGHT
- EXISTING BASE MOUNTED TAXIWAY LIGHT
- EXISTING STAKE MOUNTED TAXIWAY LIGHT
- EXISTING TAXI GUIDANCE SIGN
- EXISTING WINDCONE
- PROPOSED PAVEMENT
- PROPOSED 1/C #8 5KV UG CABLE IN UD FOR RUNWAY CIRCUIT
- PROPOSED 1/C #8 5KV UG CABLE IN UD FOR TAXIWAY CIRCUIT
- PROPOSED DUCT
- PROPOSED BASE MOUNTED TAXIWAY LIGHT
- PROPOSED STAKE MOUNTED TAXIWAY LIGHT
- PROPOSED TAXI GUIDANCE SIGN



DATE	REVISION	BY

**METROPOLIS MUNICIPAL AIRPORT
METROPOLIS, ILLINOIS**

IL PROJ.: M30-3760 A.I.P. PROJ.: 3-17-0067-89

ME Project No. 07A0128D.0800	DATE	03/04/08
Filename: R-142ELE.DWG	SCALE	1" = 50'
Scale	DATE	03/04/08
LAYOUT	MDR	03/04/08
DRAWN	MDR	03/04/08
REVIEWED	CAH	03/18/08

HANSON

Hanson Professional Services Inc.
1525 South Sixth Street
Springfield, Illinois 62703-2886
Offices Nationwide

**PROPOSED PARTIAL
PARALLEL TAXIWAY**

PROPOSED
ELECTRICAL PLAN

STA. 121+00 TO STA. 135+00

APR 23, 2008 7:35 AM HAGL000382
C:\AIRPORTS\METROPOLIS\07A0128D\CAD\SHEETS\R-142ELE.DWG - STA. 121+00 TO STA. 135+00