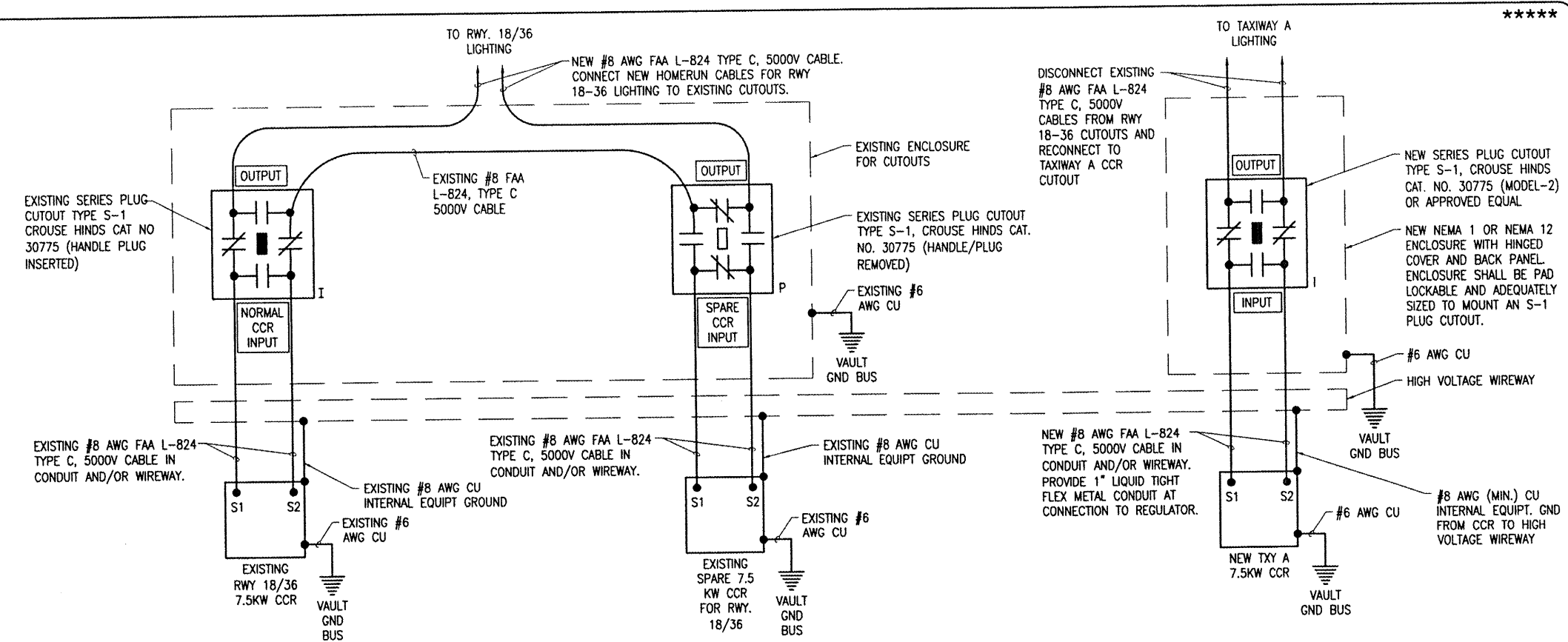
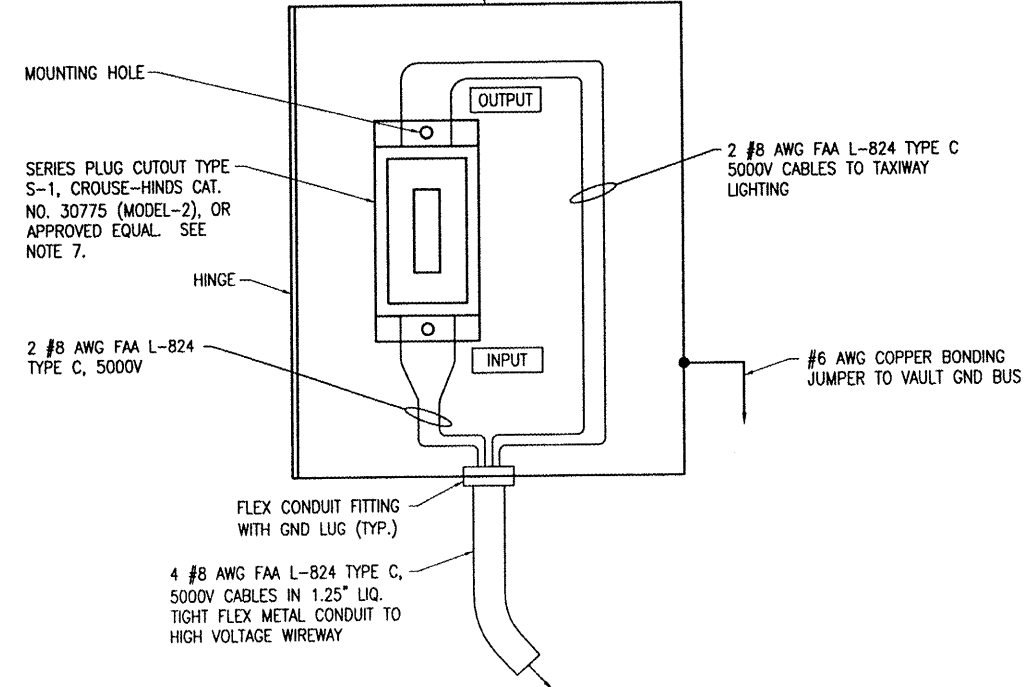


VAR 20, 2008 3:37 PM HAGL000382  
 I:\AIRPORTS\METROPOLIS\07A0128\CAD\SHEETS\E-604.DWG - Work-FLR



**HIGH VOLTAGE WIRING SCHEMATIC**

14"H x 12"W x 8"D (APPROXIMATE DIMENSIONS) NEMA 1 OR NEMA 12 ENCLOSURE WITH HINGED COVER & BACK PANEL. NOTE FRONT DOOR OF ENCLOSURE NOT SHOWN FOR CLARITY. ADJUST ENCLOSURE DIMENSIONS AS NECESSARY TO ACCOMMODATE THE RESPECTIVE CUTOUT.



**SERIES PLUG CUTOUT MOUNTING DETAIL**

NOT TO SCALE (FOR TAXIWAY A CCR)

**NOTES**

1. PROVIDE PHENOLIC ENGRAVED LEGEND PLATES FOR EACH CONSTANT CURRENT REGULATOR (EXISTING & NEW) NOTING THE RUNWAY AND/OR TAXIWAY SERVED.
2. THE NEW PLUG CUTOUT CABINET SHALL BE FURNISHED WITH A PHENOLIC ENGRAVED LEGEND PLATE THAT IDENTIFIES THE RESPECTIVE TAXIWAY CIRCUIT OR REGULATOR. INCLUDE AN ADDITIONAL LEGEND PLATE LABELED "CAUTION OPERATE CUTOUTS WITH CCR SHUT OFF".
3. PROVIDE PHENOLIC ENGRAVED LEGEND PLATES FOR THE NEW CUTOUT TO IDENTIFY THE RESPECTIVE REGULATOR OUTPUT CONNECTION AND THE RESPECTIVE CIRCUIT LOAD CONNECTION.
4. BOND PLUG CUTOUT CABINET TO THE VAULT GROUND BUS WITH A #6 AWG COPPER BONDING JUMPER. BOND REGULATOR FRAME TO VAULT GROUND BUS WITH A DEDICATED #6 AWG BONDING JUMPER.
5. PROVIDE ADEQUATE WORKING SPACE IN FRONT OF EACH CUTOUT ENCLOSURE TO MEET NEC CLEARANCE REQUIREMENTS.
6. LIQUID TIGHT FLEXIBLE METAL CONDUIT AND ASSOCIATED FITTINGS SHALL BE U.L. LISTED TO MEET THE REQUIREMENTS OF NEC 350.6, SUITABLE FOR GROUNDING AND SUNLIGHT RESISTANT. LIQUID TIGHT FLEXIBLE METAL CONDUIT THAT IS USED FOR FLEXIBILITY (INCLUDING CONNECTIONS TO CCR'S & TRANSFORMERS) SHALL REQUIRE AN EXTERNAL BONDING JUMPER OR INTERNAL EQUIPMENT GROUNDING CONDUCTOR PER NEC 350.60. EXTERNAL BONDING JUMPERS USED WITH CCR INSTALLATIONS SHALL BE #6 AWG COPPER (MINIMUM). DO NOT INSTALL LIQUID TIGHT FLEXIBLE METAL CONDUIT THAT IS NOT UL LISTED.
7. CROUSE-HINDS CAT. NO. 30771, (MODEL-3) SERIES PLUG CUTOUTS ARE NOT ACCEPTABLE, BECAUSE THE HANDLE IS NOT REMOVABLE. OTHER CUTOUTS THAT DO NOT FUNCTION THE SAME AS CROUSE-HINDS CAT. NO. 30775 (MODEL-2) ARE NOT ACCEPTABLE.
8. HIGH VOLTAGE & LOW VOLTAGE CIRCUITS SHALL NOT BE INSTALLED IN THE SAME WIREWAY.

**LEGEND**

- "I" DENOTES PLUG CUTOUT WITH PLUG INSERTED
- "P" DENOTES PLUG CUTOUT WITH PLUG PULLED
- "CCR" DENOTES CONSTANT CURRENT REGULATOR

\*\*\*\*\*

BY	
REVISION	
DATE	

**METROPOLIS MUNICIPAL AIRPORT  
 METROPOLIS, ILLINOIS**

IL PROJ.: M30-3760 A.I.P. PROJ.: 3-17-0087-89

HE Project No.	07A0128D 0800
Filename	E-604.DWG
Scale	NONE
Date	03/21/08
LAYOUT	KNL 01/24/08
DRAWN	MV 01/24/08
REVIEWED	C.A.H. 03/18/08



Hanson Professional Services Inc.  
 1526 South Sixth Street  
 Springfield, Mo 65806  
 Offices Nationwide

**PROPOSED PARTIAL  
 PARALLEL TAXIWAY**

**HIGH VOLTAGE  
 WIRING SCHEMATIC**