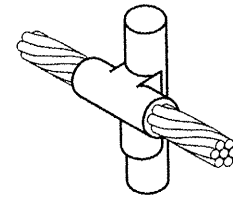
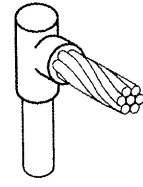


VAULT LEGEND PLATE SCHEDULE	
DEVICE	LABEL
RUNWAY 18-36 CCR	RUNWAY 18-36
SPARE RUNWAY 18-36 CCR	SPARE FOR RUNWAY 18-36
CUTOUT ENCLOSURE FOR RUNWAY 18-36	RUNWAY 18-36 CUTOUTS
TAXIWAY A CCR	TAXIWAY A
CUTOUT ENCLOSURE FOR TAXIWAY A	TAXIWAY A CUTOUT
CUTOUT ENCLOSURE FOR TAXIWAY A	CAUTION OPERATE CUTOUTS WITH CCR SHUT OFF
TAXIWAY CUTOUT INPUT SIDE CONNECTION	INPUT
TAXIWAY CUTOUT OUTPUT SIDE CONNECTION	OUTPUT
TAXIWAY A LIGHTING PHOTODELL/BYPASS RELAY	TYX A LTG PHOTOCCELL/BYPASS RELAY

NOTE: LEGEND PLATES SHALL BE WEATHERPROOF ENGRAVED PLASTIC OR PHENOLIC MATERIAL, 1/4" HIGH BLACK LETTERS ON A WHITE BACKGROUND UNLESS NOTED OTHERWISE. SECURE WITH WEATHERPROOF ADHESIVE AND MACHINE SCREWS. FURNISH ADDITIONAL LEGEND PLATES WHERE REQUIRED BY CODE, FOR ADDITIONAL EQUIPMENT, AS DETAILED HEREIN ON THE PLANS, AND AS NOTED IN THE SPECIAL PROVISION SPECIFICATIONS.



CABLE TO GROUND ROD

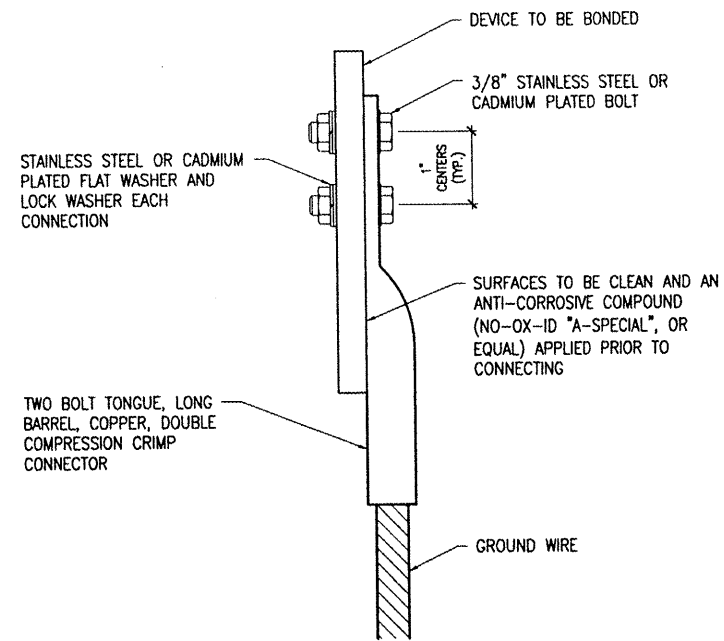


CABLE TO GROUND ROD

DETAIL NOTES

- ALL BELOW GRADE CONNECTIONS TO GROUND RODS SHALL BE EXOTHERMIC WELD TYPE CONNECTIONS. EXOTHERMIC WELDS SHALL BE CADWELD AS MANUFACTURED BY ERICO PRODUCTS, SOLON, OHIO, ULTRAWELD AS MANUFACTURED BY HARGER LIGHTNING PROTECTION & GROUNDING EQUIPMENT, GRAYSLAKE, IL, OR THERMOWELD AS MANUFACTURED BY CONTINENTAL INDUSTRIES, TULSA, OKLAHOMA. VERIFY PROPER SIZES, MOLDS, TYPES, AND REQUIREMENTS FOR THE RESPECTIVE APPLICATION WITH THE MANUFACTURER, AND INSTALL PER THEIR DIRECTIONS.

EXOTHERMIC WELD DETAILS



2 HOLE LONG BARREL COMPRESSION LUG TABLE			
WIRE SIZE	BURNDY CAT. NO.	THOMAS & BETTS CAT. NO.	PENN-UNION CAT. NO.
#6 AWG STRANDED	YA6C-2TC38	256-30695-1158	BBLU-6D-2TC38
#4 AWG STRANDED	YA4C-2TC38	256-30695-1159	BBLU-4D-2TC38
#2 AWG STRANDED	YA2C-2TC38	256-30695-1160	BBLU-2D-2TC38
#2 AWG SOLID	YA3C-2TC38	256-30695-1160	BBLU-3D-2TC38
#1/0 AWG STRANDED	YA25-2TC38	256-30695-1162	BBLU-1/0D-2TC38
#2/0 AWG STRANDED	YA26-2TC38	256-30695-1116	BBLU-2/0D-2TC38
#3/0 AWG STRANDED	YA27-2TC38	54816BE	BBLU-3/0D-2TC38
#4/0 AWG STRANDED	YA28-2TC38	256-30695-1117	BBLU-4/0D-2TC38

NOTES

- GROUND WIRE CONNECTIONS TO EQUIPMENT SHALL BE WITH 2 HOLE TONGUE LONG BARREL COMPRESSION LUGS BOLTED TO THE DEVICE OR WITH THE RESPECTIVE EQUIPT MANUFACTURER'S LUG OR TERMINAL WHERE APPLICABLE.
- GROUNDING ELECTRODE CONDUCTORS, BONDING JUMPERS, & INDIVIDUAL GROUND WIRES SHALL NOT BE INSTALLED IN METAL CONDUIT. WHERE PLASTIC CONDUIT IS USED FOR INDIVIDUAL GROUND WIRES, DO NOT COMPLETELY ENCIRCLE THE CONDUIT WITH FERROUS AND/OR MAGNETIC MATERIALS. WHERE METAL CLAMPS ARE INSTALLED USE NYLON BOLTS, NUTS, WASHERS, & SPACERS TO INTERRUPT A COMPLETE METALLIC PATH FROM ENCIRCLING THE CONDUIT.
- ALL CONNECTIONS SHALL BE COATED WITH A CORROSION PREVENTATIVE COMPOUND (SANCHEM INC. NO-OX-ID "A-SPECIAL", BURNDY PENETROX E, OR EQUAL) BEFORE JOINING. ALL COPPER BUS BARS SHALL BE CLEANED PRIOR TO MAKING CONNECTIONS TO REMOVE SURFACE OXIDATION. CLEAN SURFACES, OF RESPECTIVE DEVICES TO BE BONDED, TO BARE METAL, PER NEC 250-12.

GROUNDING LUG CONNECTION DETAIL

DATE	REVISION	BY

METROPOLIS MUNICIPAL AIRPORT
METROPOLIS, ILLINOIS
A.I.P. PROJ.: 3-17-0067-B9
IL PROJ.: M30-3760

HEI Project No. 07A0128D_0800	Param. E-501.DWG	NO SCALE	03/21/08
Scale	Date	LAYOUT	03/12/08
		DRAWN	03/12/08
		REVIEWED	03/18/08



PROPOSED PARTIAL PARALLEL TAXIWAY
LEGEND PLATE SCHEDULE & GROUNDING DETAILS