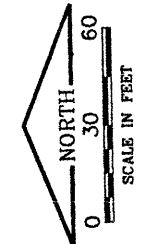


- NOTE:**
1. THE CONTRACTOR MUST COORDINATE WITH LOCAL UTILITY TO RELOCATE EXISTING POWER POLE. COST SHALL BE INCIDENTAL TO THE CONTRACT.
  2. THE CONTRACTOR MUST COORDINATE WITH LOCAL UTILITY TO ADJUST EXISTING WATER METER. COST SHALL BE INCIDENTAL TO THE CONTRACT.
  3. THE CONTRACTOR SHALL LOCATE EXISTING SANITARY LATERAL PRIOR TO RELOCATION.

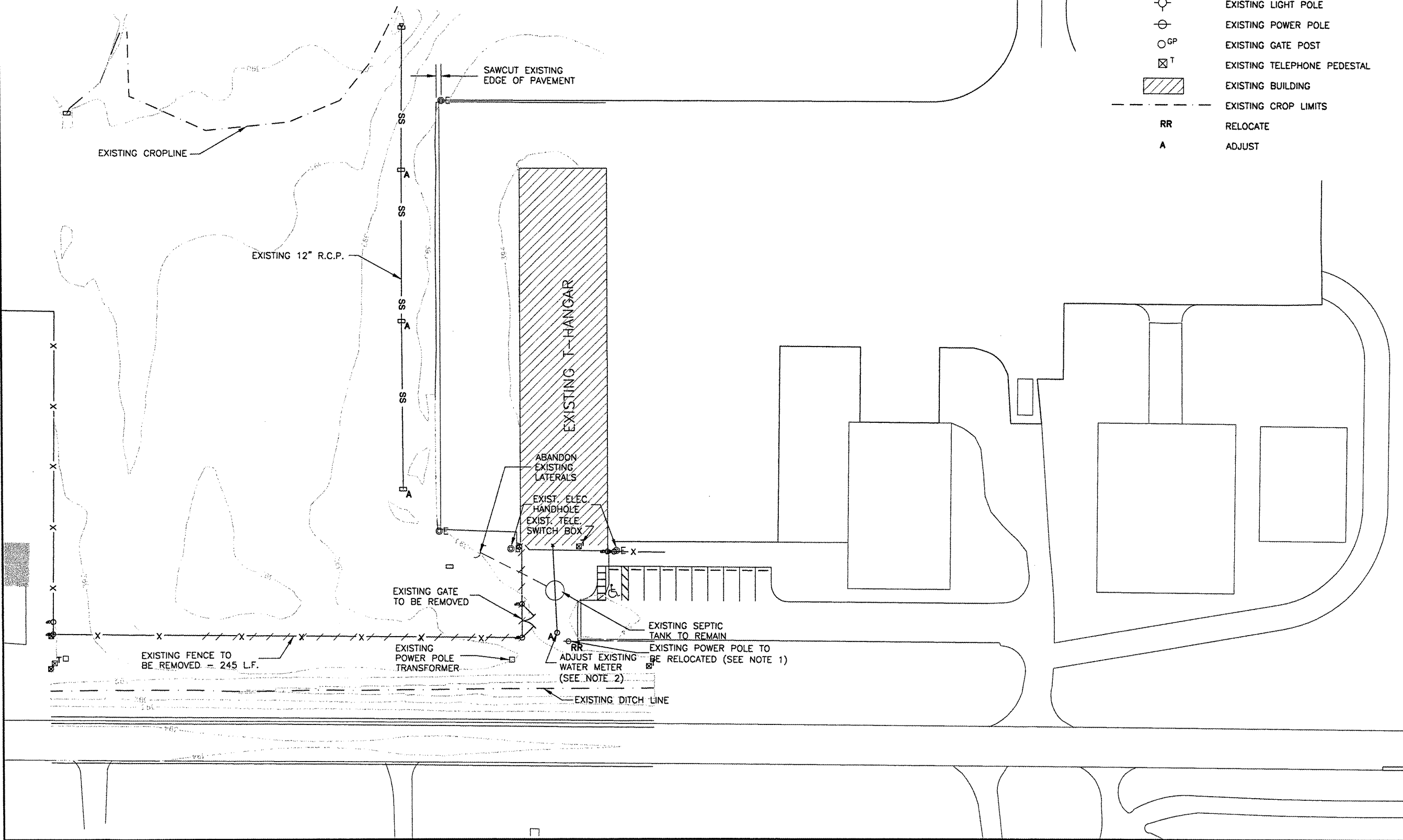
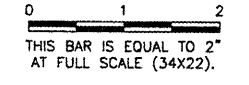


**LEGEND**

	EXISTING DITCHLINE
	EXISTING FENCE
	EXISTING GATE
	EXISTING CONTOUR
	EXISTING STORM SEWER
	EXISTING INLET
	EXISTING END SECTION
	EXISTING ELECTRICAL MANHOLE
	EXISTING LIGHT POLE
	EXISTING POWER POLE
	EXISTING GATE POST
	EXISTING TELEPHONE PEDESTAL
	EXISTING BUILDING
	EXISTING CROP LIMITS
	RELOCATE
	ADJUST

**REVISIONS**

NUMBER	BY	DATE



**PINCKNEYVILLE-DUQUOIN AIRPORT  
 PERRY COUNTY, ILLINOIS  
 T-HANGAR SITE WORK  
 EXISTING CONDITIONS  
 &  
 REMOVALS**

© Copyright CMT, Inc.  
**CMT**  
 CRAMFORD, MURPHY & TILLY, INC.  
 CONSULTING ENGINEERS  
 License No. 64-000618

DESIGN BY:	KLB
DRAWN BY:	CMT
CHECKED BY:	JEF
APPROVED BY:	JEF
DATE:	04/18/2008
JOB No:	07062-03-00
IL PROJECT NO. PJY-3373 A.I.P. PROJECT NO. 3-17-0037-B6	
SHEET	05 OF 17 SHEETS