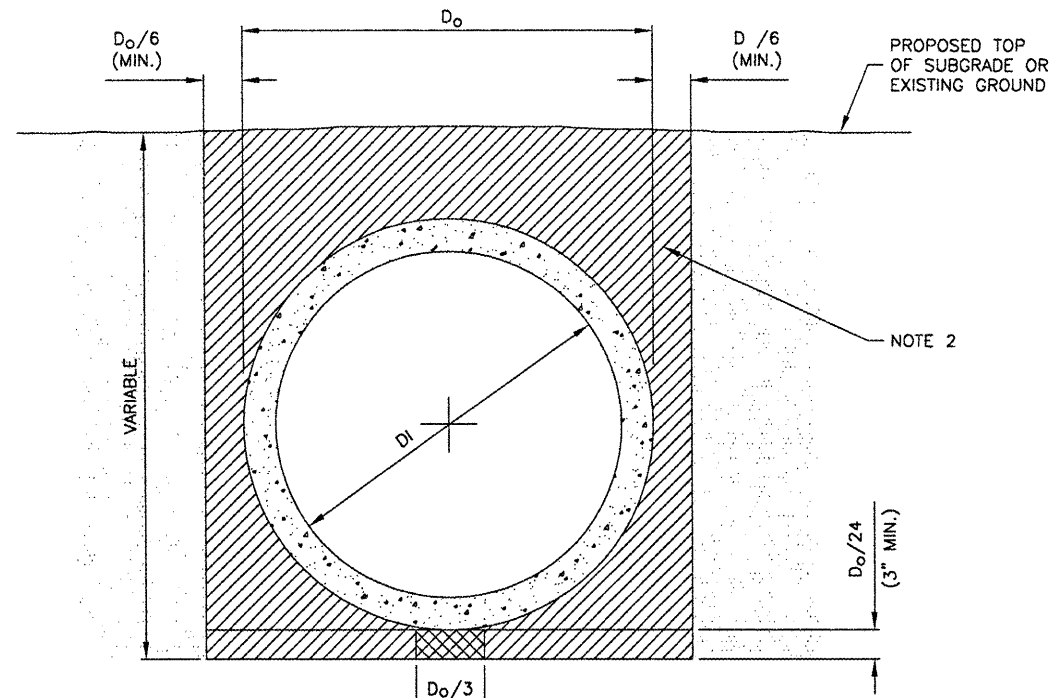


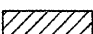



STANDARD TRENCH INSTALLATION
 NON-PAVED AREA
 N.T.S.



STANDARD TRENCH INSTALLATION
 PROPOSED PAVED AREAS
 N.T.S.

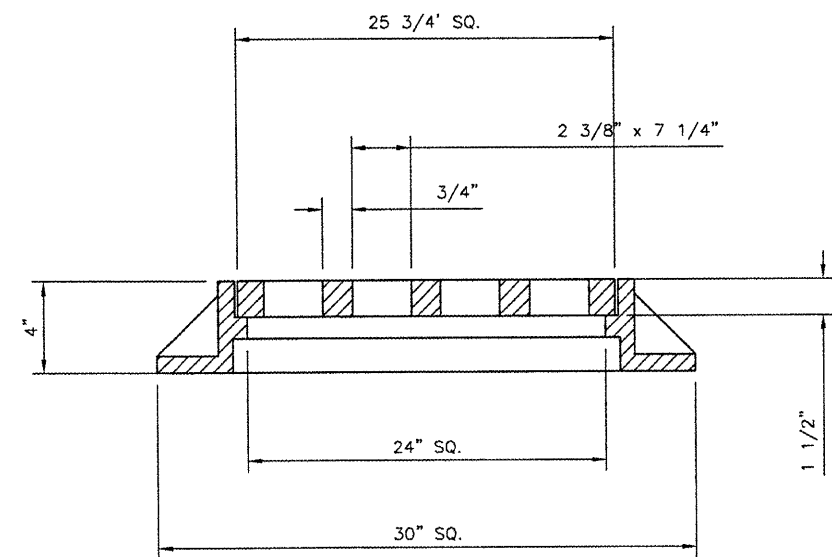
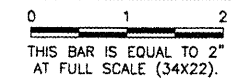
LEGEND

-  DRAINAGE CONDUIT MATERIAL-CONCRETE
-  MIDDLE BEDDING LOOSELY PLACED UNCOMPACTED BEDDING
-  HAUNCH AND OUTER BEDDING COMPACTION- TO ENGINEER'S SATISFACTION OR 95% STANDARD PROCTOR
-  LOWER SIDE AND OVERFILL COMPACTION- SAME AS EMBANKMENT REQUIREMENTS

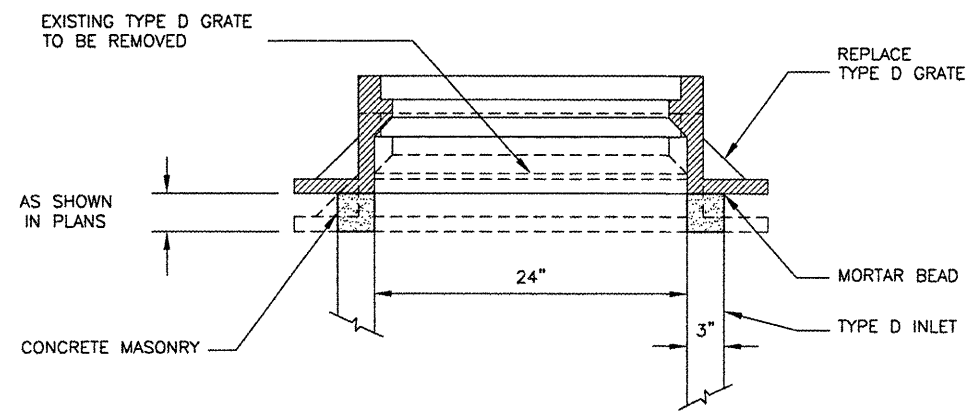
D_o PIPE OUTSIDE DIAMETER
 D_i PIPE INSIDE DIAMETER

- NOTES**
- BEDDING SHOWN IS IN ACCORDANCE WITH "STANDARD EMBANKMENT INSTALLATIONS", STANDARD INSTALLATION & BEDDING FACTORS FOR THE INDIRECT DESIGN METHOD (DESIGN DATA 40), AMERICAN CONCRETE PIPE ASSOCIATION.
 - BACKFILL TO EXTEND 3' BEYOND EDGES OF PROPOSED PAVEMENT.

REVISIONS		
NUMBER	BY	DATE



R-1878 FRAME AND LID
 N.T.S.



ADJUST INLET BOX
 N.T.S.

PINCKNEYVILLE-DUQUOIN AIRPORT
PERRY COUNTY, ILLINOIS
T-HANGAR SITE WORK
DRAINAGE DETAILS

© Copyright CMT, Inc.
CMT
 CRAWFORD, MURPHY & TILLY, INC.
 CONSULTING ENGINEERS
 License No. 184-000613

DESIGN BY: KLB
 DRAWN BY: CMT
 CHECKED BY: JEF
 APPROVED BY: JEF
 DATE: 04/18/2008
 JOB No: 07062-03-00