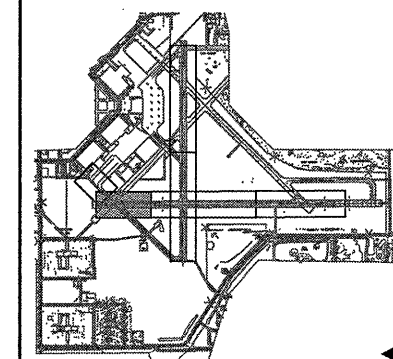


no.	date	by	ckd	description
0	04/25/08	BJQ	MAR	ISSUED FOR BID



date	02/13/08	detailed	L. TUCKER
designed	B. QUINLAN	checked	A. RAHMAN

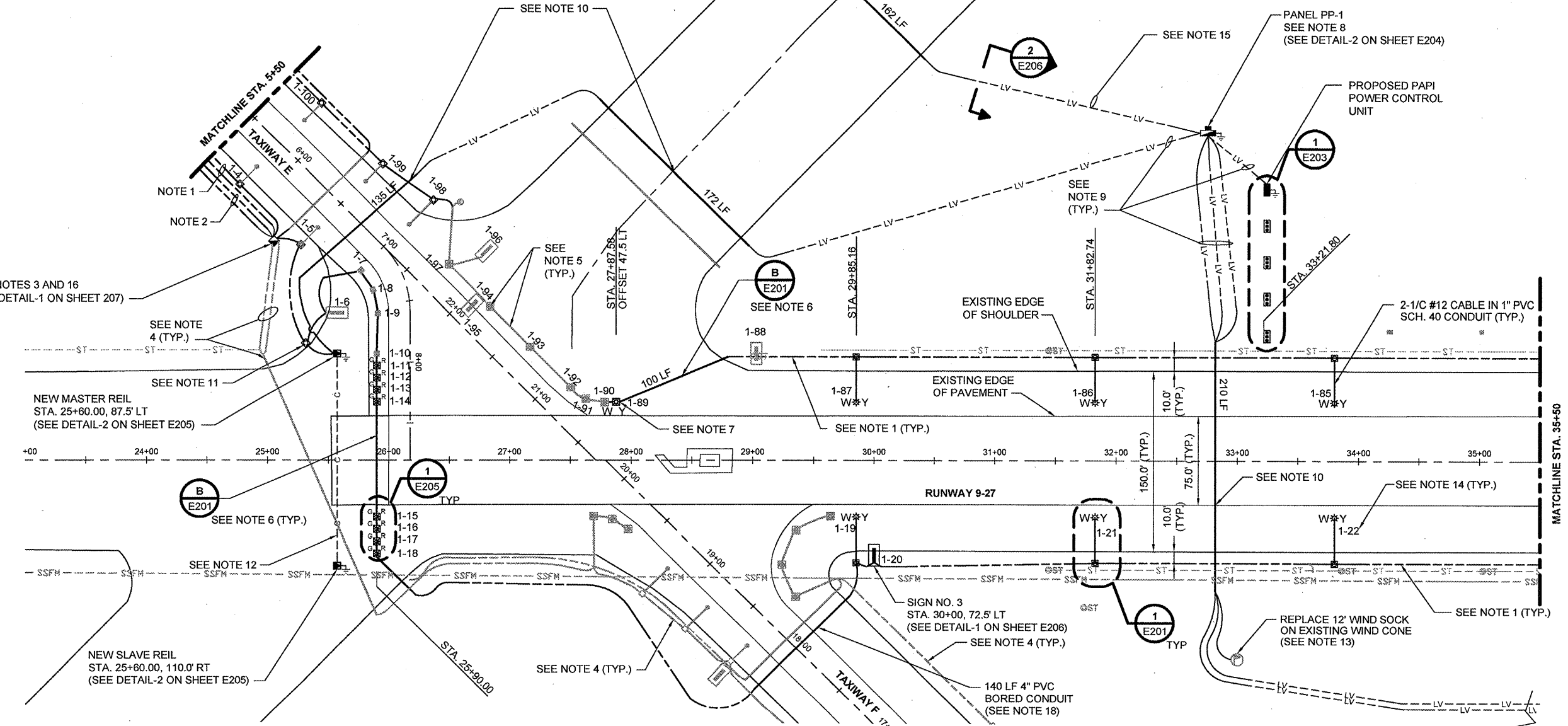
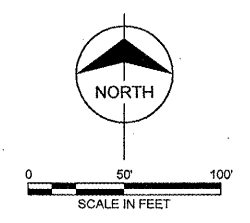
**RUNWAY 9/27 LIGHTING, NAVAIDS AND SIGNAGE; RUNWAY 18/36 WIND CONES AND SIGNAGE**

ELECTRICAL SITE PLAN  
RUNWAY 9-27 STA. 23+00 TO STA. 35+50

project	contract
---------	----------

drawing **E102** rev. **0**

sheet 10 of 21 sheets  
file 47463E102.DWG



**NOTES:**

- PROPOSED RUNWAY 9/27 AND TAXIWAY "E" 5KV WIRING IN 3/4" UNIT DUCT.
- PROPOSED RUNWAY 18/36 AND TAXIWAY "F" WIRING IN 3/4" UNIT DUCT.
- SPLICE PROPOSED RUNWAY 18/36 AND TAXIWAY "F" WIRING TO EXISTING WIRING IN PROPOSED HANDHOLD. PROVIDE L-823 CONNECTORS (TAPED AND HEAT SHRUNK) FOR ALL FOUR (4) HOMERUN WIRES. PROVIDE ONE LOOP OF SLACK IN EACH HOMERUN WIRE.
- EXISTING RUNWAY 18/36 AND TAXIWAY "F" WIRING TO REMAIN.
- REMOVE EXISTING RUNWAY 9/27 AND TAXIWAY "E" WIRING IN EXISTING CONDUIT AND REPLACE IN KIND. PROVIDE NEW ISOLATION TRANSFORMER AND SPLICES AT EXISTING LIGHT BASES.
- PROPOSED 2" PVC CONDUIT, CONCRETE ENCASED. RUN PROPOSED RUNWAY 9/27 AND TAXIWAY "E" WIRING IN 2" PVC CONDUIT.
- INSTALL PROPOSED BASE MOUNTED MIRL AND CONNECT FIXTURE 1-89 AND 1-90 WITH 2" PVC CONDUIT, CONCRETE ENCASED.
- PROPOSED 120/240V, 1-PHASE POWER PANEL AND UTILITY METER. CONTRACTOR SHALL COORDINATE INSTALLATION OF NEW ELECTRIC SERVICE WITH RANTOUL PUBLIC WORKS DEPARTMENT. PROVIDE METER BASE AND GROUNDING PER UTILITY REQUIREMENTS. SEE PANEL DETAILS SHEET E204.
- PROPOSED 2-#6 XLP-USE, 1-#8 GROUND (600V) IN 1" PVC CONDUIT (24" MINIMUM BURY). EXACT ROUTING TO BE FIELD COORDINATED.
- PROPOSED 2" PVC CONDUIT (BORED).
- PROPOSED SPLICE CAN WITH ISOLATION TRANSFORMER FOR MASTER REIL CURRENT SENSING OPTION.
- PROPOSED MASTER-SLAVE REIL CONTROL WIRING IN 2" PVC CONDUIT. WIRING REQUIREMENTS SHALL BE COORDINATED WITH MANUFACTURER. EXACT ROUTING TO BE FIELD COORDINATED. REPAIR CONDUIT TRENCH TO MATCH EXISTING CONDITIONS.
- CONTRACTOR SHALL TIE PROPOSED 120V SERVICE TO EXISTING DISCONNECT AT REIL.
- PROPOSED FIXTURE NUMBER. FIRST NUMBER INDICATES CIRCUIT NUMBER AND SECOND NUMBER INDICATES FIXTURE NUMBER. CONTRACTOR SHALL PROVIDE NEW ID TAGS FOR ALL LIGHTS AND SIGNS ON RUNWAY 9/27 AND TAXIWAY "E" CIRCUIT.
- PROPOSED 3-#3 XLP-USE, 1-#8 GROUND IN 1 1/2" GRSC (SERVICE ENTRANCE).
- PROPOSED 4'x4' ELECTRICAL HANDHOLD. SEE ELECTRICAL DETAIL SHEETS FOR EXACT REQUIREMENTS. (PROVIDE ONE LOOP OF SLACK IN EACH HOMERUN WIRE).
- PROPOSED WIND CONES AND SEGMENTED CIRCLE FOR RUNWAY 18/36. SEE SHEET E105 FOR LOCATION. WIND CONES SHALL BE PROVIDED WITH WEATHER PROOF 120V DISCONNECTS AND WEATHERPROOF GFCI RECEPTACLE.
- PROPOSED RUNWAY 9/27 AND TAXIWAY "E" WIRING IN 4" CONDUIT.
- COUNTERPOISE WIRING, GROUND RODS AND SAFETY (EQUIPMENT) GROUNDING SHALL BE PROVIDED AS DETAILED ON THE ELECTRICAL DETAIL SHEETS. GROUNDING / COUNTERPOISE SYSTEM NOT SHOWN ON PLAN SHEETS FOR SAKE OF CLARITY.

COPYRIGHT © 2008 BURNS & MCDONNELL ENGINEERING COMPANY, INC.