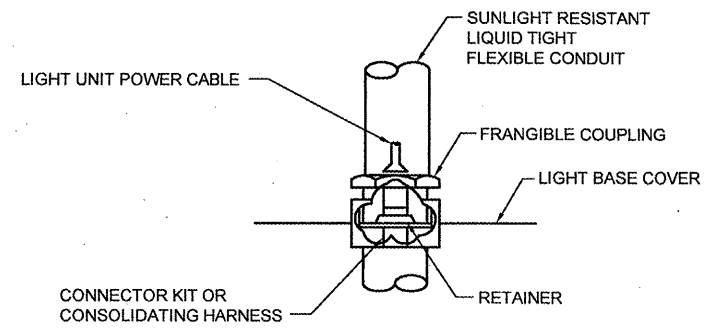


* SEE PAPI SITING DATA TABLE FOR DIMENSIONS

PAPI INSTALLATION PLAN

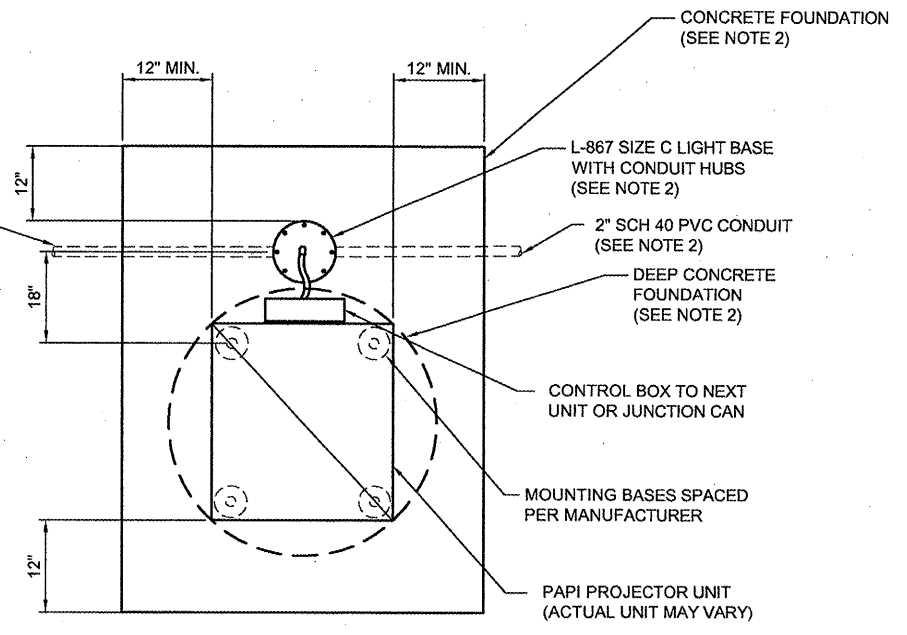
DETAIL 1
NOT TO SCALE
E102
E104



CABLE CONNECTIONS DETAIL

DETAIL 2
NOT TO SCALE

2" SCH 40 PVC CONDUIT TO NEXT UNIT OR JUNCTION CAN (SEE NOTE 3)

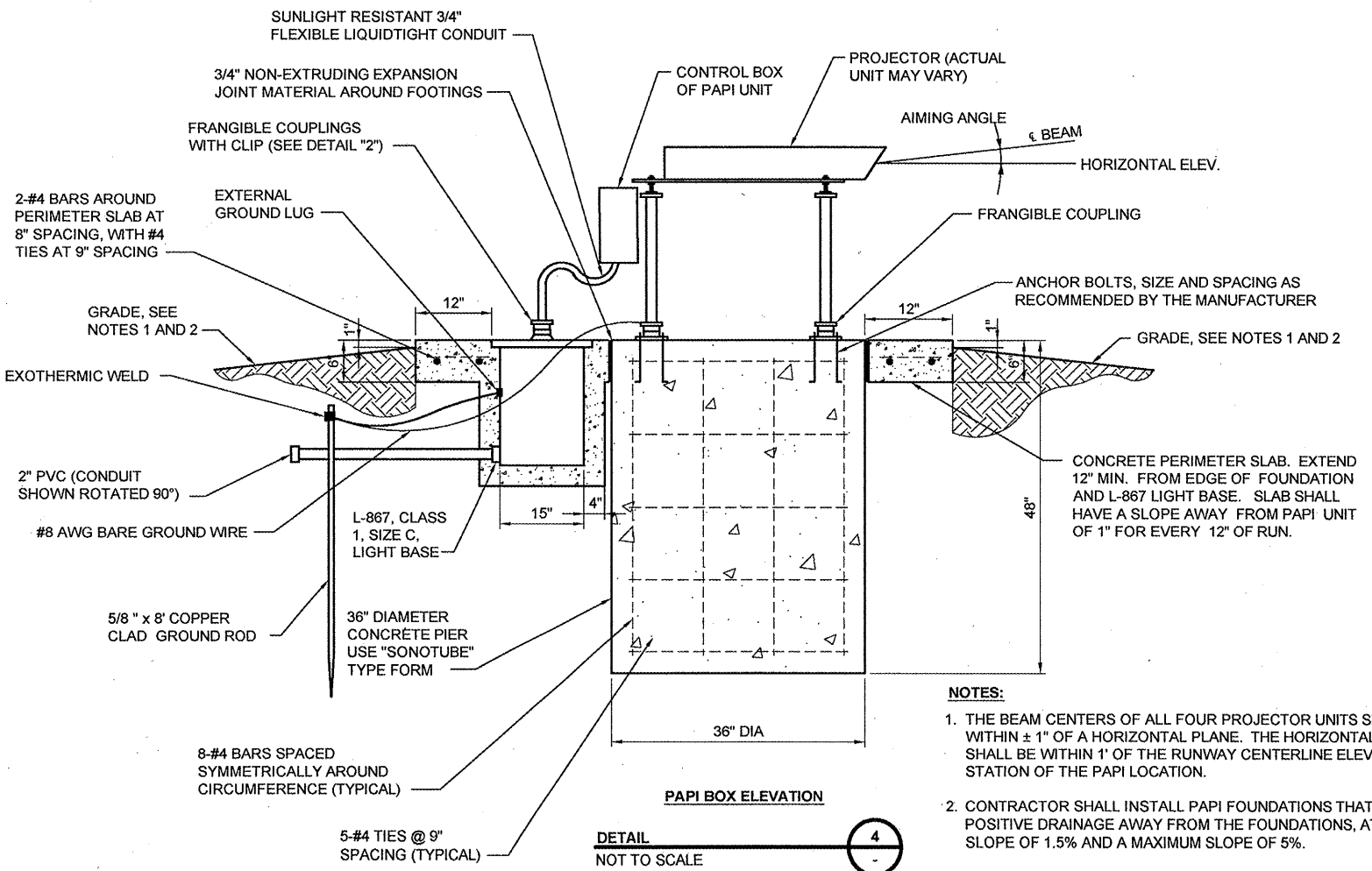


L-880 STYLE A PAPI SYSTEM INSTALLATION DETAIL
PAPI BOX PLAN

DETAIL 3
NOT TO SCALE

NOTES:

- PAPI SYSTEM SHALL BE TYPE 880, STYLE A, CLASS 2.
- PAPI FOUNDATIONS, CONDUITS, POWER/CONTROL WIRING, L-867 BASE CAN AND ALL INCIDENTALS SHALL BE CONSIDERED INCIDENTAL TO PAPI PAY ITEM.
- PROVIDE POWER AND CONTROL WIRING BETWEEN UNITS AS REQUIRED BY MANUFACTURER.



PAPI BOX ELEVATION

DETAIL 4
NOT TO SCALE

NOTES:

- THE BEAM CENTERS OF ALL FOUR PROJECTOR UNITS SHALL BE WITHIN $\pm 1"$ OF A HORIZONTAL PLANE. THE HORIZONTAL PLANE SHALL BE WITHIN 1' OF THE RUNWAY CENTERLINE ELEVATION AT THE STATION OF THE PAPI LOCATION.
- CONTRACTOR SHALL INSTALL PAPI FOUNDATIONS THAT THERE IS POSITIVE DRAINAGE AWAY FROM THE FOUNDATIONS, AT A MINIMUM SLOPE OF 1.5% AND A MAXIMUM SLOPE OF 5%.
- ANY EARTHWORK ASSOCIATED WITH THE FOUNDATION INSTALLATION INCLUDING EXCAVATION, EMBANKMENT OR GRADING SHALL NOT BE PAID FOR SEPARATELY BUT SHALL BE CONSIDERED INCIDENTAL TO THE COST OF THE PAPI INSTALLATION.

PAPI SITING DATA TABLE		
RW 9	CALCULATED	ACTUAL MEASUREMENT (BY REGISTERED SURVEYOR)
THRESHOLD CROSSING HEIGHT	35'	
AIMING ANGLE	2°50'	
THRESHOLD LOCATION	STA. 26+00	
PAPI LOCATION (FRONT OF UNITS)	STA. 33+21.80, 97.5' LT.	
RUNWAY CENTERLINE THRESHOLD ELEV.	735.52	
RUNWAY CENTERLINE ELEV., PAPI LOCATION	734.80	
ELEVATION OF PAPI UNIT BEAM CENTER	735.80	
DISTANCE FROM THRESHOLD (L) (FT)	721.80	
DISTANCE FROM EDGE OF PAVEMENT (D) (FT)	60.00	
RW 27	CALCULATED	ACTUAL MEASUREMENT (BY REGISTERED SURVEYOR)
THRESHOLD CROSSING HEIGHT	35'	
AIMING ANGLE	2°50'	
THRESHOLD LOCATION	STA. 76+00	
PAPI LOCATION (FRONT OF UNITS)	STA. 68+85.30, 95' RT.	
RUNWAY CENTERLINE THRESHOLD ELEV.	728.71	
RUNWAY CENTERLINE ELEV., PAPI LOCATION	728.34	
ELEVATION OF PAPI UNIT BEAM CENTER	729.34	
DISTANCE FROM THRESHOLD (L) (FT)	714.70	
DISTANCE FROM EDGE OF PAVEMENT (D) (FT)	52.37	
ALL PAPI INSTALLATIONS SHALL BE PER FAA AS 150/5340-30 CURRENT EDITION		
ALL ELEVATIONS AS RECORDED BY THE SURVEYOR SHALL BE IN NAVD88 VERTICAL DATUM		

NOTES:

- EXISTING THRESHOLD AND RUNWAY CENTERLINE ELEVATIONS WERE OBTAINED FROM RECORD DRAWINGS. CONTRACTOR SHALL HAVE REGISTERED LAND SURVEYOR VERIFY ELEVATIONS AND NOTIFY ENGINEER OF ANY DISCREPANCIES IMMEDIATELY, AS ANY VARIATION WILL EFFECT PLACEMENT OF PAPI UNITS.
- CONTRACTOR SHALL HAVE REGISTERED SURVEYOR COMPLETE SITING TABLE WHERE INDICATED.
- SURVEY SHALL NOT BE PAID FOR SEPARATELY BUT SHALL BE CONSIDERED INCIDENTAL TO THE PAPI INSTALLATION.

no.	date	by	ckd	description
0	04/25/08	BJQ	MAR	ISSUED FOR BID



date	02/13/08	detailed	L. TUCKER
designed	B. QUINLAN	checked	A. RAHMAN

RUNWAY 9/27 LIGHTING, NAVAIDS AND SIGNAGE; RUNWAY 18/36 WIND CONES AND SIGNAGE

ELECTRICAL DETAILS 3

project	contract
drawing	rev.
E203 - 0	
sheet 17	of 21 sheets
file 47463E203.dwg	

Scale For Microlining
Inches

COPYRIGHT © 2008 BURNS & MCDONNELL ENGINEERING COMPANY, INC.