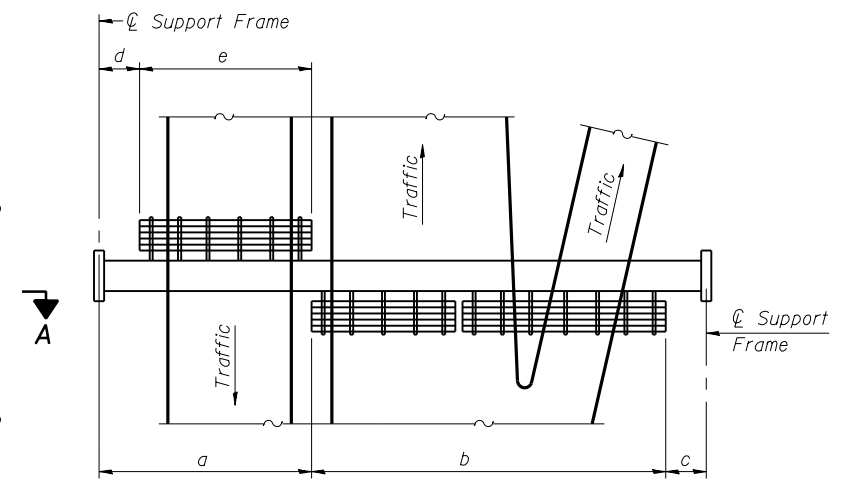


TYPICAL FRONT ELEVATION

With lights and handrail omitted for clarity.
For Section B-B, see Base Sheet OS-A-10.



PLAN WALKWAY AND HANDRAIL SKETCH
(Road plan beneath truss varies)

BRACKET TABLE

WF(A-N)4x1.79 or WF(A-N)4x3.06 ASTM B308, Alloy 6061-T6		
Sign Width		Number Brackets Required
Greater Than	Less Than or Equal To	
	8'-0"	2
8'-0"	14'-0"	3
14'-0"	20'-0"	4
20'-0"	26'-0"	5
26'-0"	32'-0"	6

Notes:

* Space walkway brackets WF(A-N)4x3.06 and sign brackets WF(A-N)4x1.79 for efficiency and within limits shown:

f = 12" maximum, 4" minimum (End of sign to ϕ of nearest bracket)
g = 12" maximum, 4" minimum (End of walkway grating to ϕ of nearest support bracket)

h = 6'-0" maximum (ϕ to ϕ sign and/or walkway support brackets, WF(A-N)4x1.79 or WF(A-N)4x3.06)

k = 2" maximum gap between adjacent walkway grating sections and handrail ends

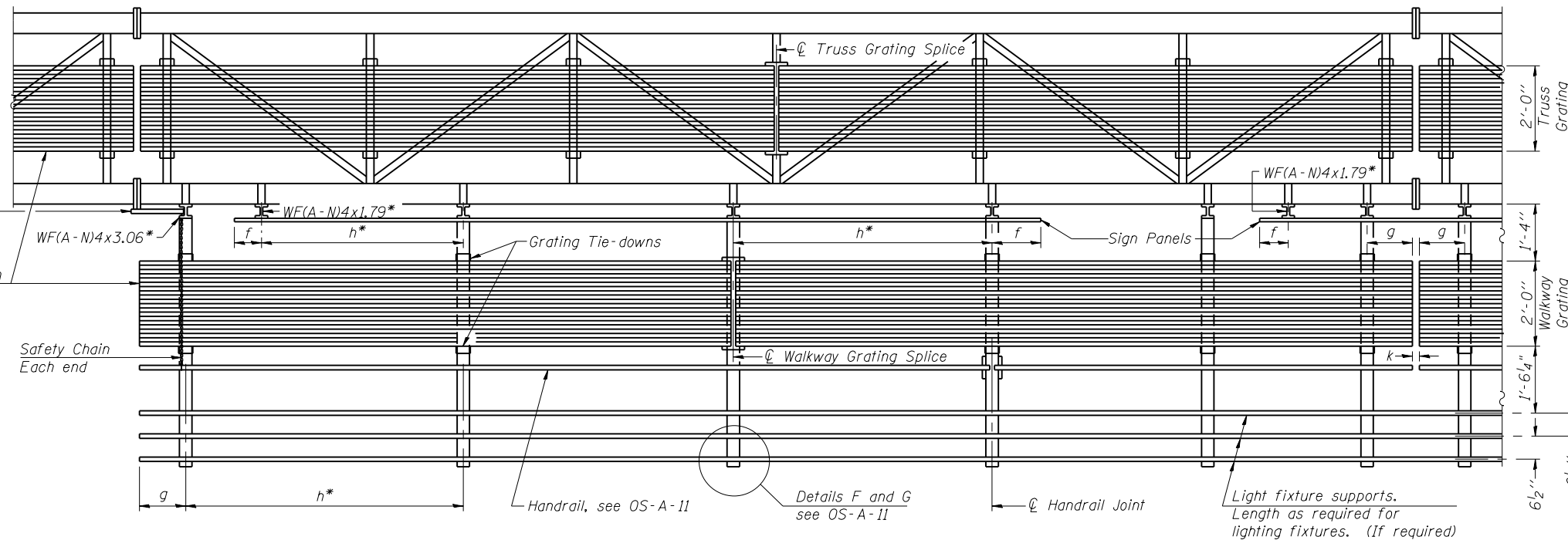
** If walkway bracket at safety chain location is behind sign, add angle to bracket, see Alternate Safety Chain Attachment on Base Sheet OS-A-11.

For Details T and W, Section B-B and Grating Splice Details see Base Sheet OS-A-10.

For Handrail Details see Base Sheet OS-A-11.

** Alternate angle for safety chain attachment

Standard Aluminum Grating, see Details T and W



SECTION A-A

Handrail and walkway shall span a minimum of three brackets between splices and/or gap joints. Place all sign and walkway brackets as close to panel points as practical. Handrail joints, grating, and light support splices placed as needed.

Structure Number	Station	a	b	c	d	e	Walkway Grating and Handrail Lengths
SN-031	2S1011039R138.8	36'-3"	39'-0"	36'-9"	n/a	n/a	39'-0"
SN-032	2S1011039R139.4	52'-9"	39'-0"	31'-3"	n/a	n/a	39'-0"
SN-033	2S1011039R139.8	43'-0"	60'-3"	36'-9"	n/a	n/a	60'-3"
SN-034	2S1010020R021.5	15'-0"	63'-3"	40'-9"	n/a	n/a	63'-3"
SN-039	2S0711039L118.7	39'-0"	60'-3"	30'-9"	n/a	n/a	60'-3"

Truss grating to facilitate inspection shall run full length (center to center of support frames) $\pm 12"$ on overhead trusses. Cost of truss grating is included in "Overhead Sign Structure".

Walkway and Truss Grating width dimensions are nominal and may vary $\pm 1/2"$ based on available standard widths.

OS-A-9

6-1-12

N:\PROJ\10020080\00\0020080\01\Design\Structure\CAD\SN-03-CN_-S018.dgn

Clorba Group, Inc.
CONSULTING ENGINEERS
1001 North Cumberland Avenue
Suite 202 Chicago, Illinois 60656
Tel: 773-774-4000
Fax: 773-774-4014
Email: clorba@clorba.com

USER NAME = jettanaseo	DESIGNED - NG	REVISED -
PLOT SCALE = 0:2.0000 "/> <td>CHECKED - BWS</td> <td>REVISED -</td>	CHECKED - BWS	REVISED -
PLOT DATE = 1/31/2014	DRAWN - RD	REVISED -
	CHECKED - BWS	REVISED -

**STATE OF ILLINOIS
DEPARTMENT OF TRANSPORTATION**

**OVERHEAD SIGN STRUCTURES
ALUMINUM WALKWAY DETAILS**

SHEET NO. S-18 OF S-26 SHEETS

F.A.I. RTE.	SECTION	COUNTY	TOTAL SHEETS	SHEET NO.
VAR.	.	**	45	37
D-2 OVD SIN STR REPL 14-27			CONTRACT NO. 46288	
ILLINOIS FED. AID PROJECT				

WINNEBAGO & OGLE