

F.A.I. RTE.	SECTION	COUNTY	TOTAL SHEETS	SHEET NO.
094	1920-B	COOK	142	1
		ILLINOIS	CONTRACT NO. 60J15	

*142 + 1 = 143

D-91-190-10



LOCATION OF SECTION INDICATED THIS: - [black rectangle] -

PROFESSIONAL ENGINEER'S SIGN & SEAL

[Signature]

EXPIRES: 11-30-2015

THOMAS N. STEVENS
062-046998
REGISTERED PROFESSIONAL ENGINEER
OF ILLINOIS

STATE OF ILLINOIS
DEPARTMENT OF TRANSPORTATION
DIVISION OF HIGHWAYS

SUBMITTED *Mar 12 31 20 14*

John Fortmann
DEPUTY DIRECTOR OF HIGHWAYS, REGION ENGINEER

May 9 20 14
John D. Baranzelli, P.E.
ENGINEER OF DESIGN AND ENVIRONMENT

May 9 20 14
Omer Osman, P.E.
DIRECTOR OF HIGHWAYS, CHIEF ENGINEER

PRINTED BY THE AUTHORITY OF THE STATE OF ILLINOIS

STATE OF ILLINOIS
DEPARTMENT OF TRANSPORTATION
DIVISION OF HIGHWAYS

**PROPOSED
HIGHWAY PLANS**

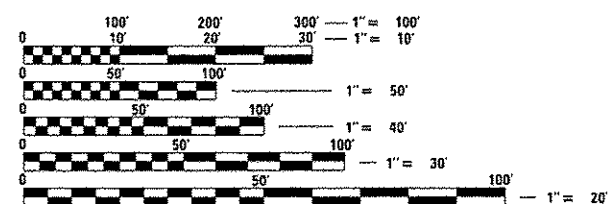
FAI 94 I-90/94 (DAN RYAN EXPRESSWAY)
AT 63rd STREET (FAU 1519)
SECTION 1920-B
PROJECT: ACNHPP-0005(990)
BRIDGE SUPERSTRUCTURE REPLACEMENT
SN 016-1149
COOK COUNTY
C-91-190-10

FOR INDEX OF SHEETS, SEE SHEET NO. 2

TRAFFIC DATA

63RD STREET:
EXISTING ADT = 10,600 (2011)
SPEED LIMIT = 30 MPH
DESIGN SPEED = 30 MPH

THE IMPROVEMENT IS LOCATED WITHIN THE CITY OF CHICAGO

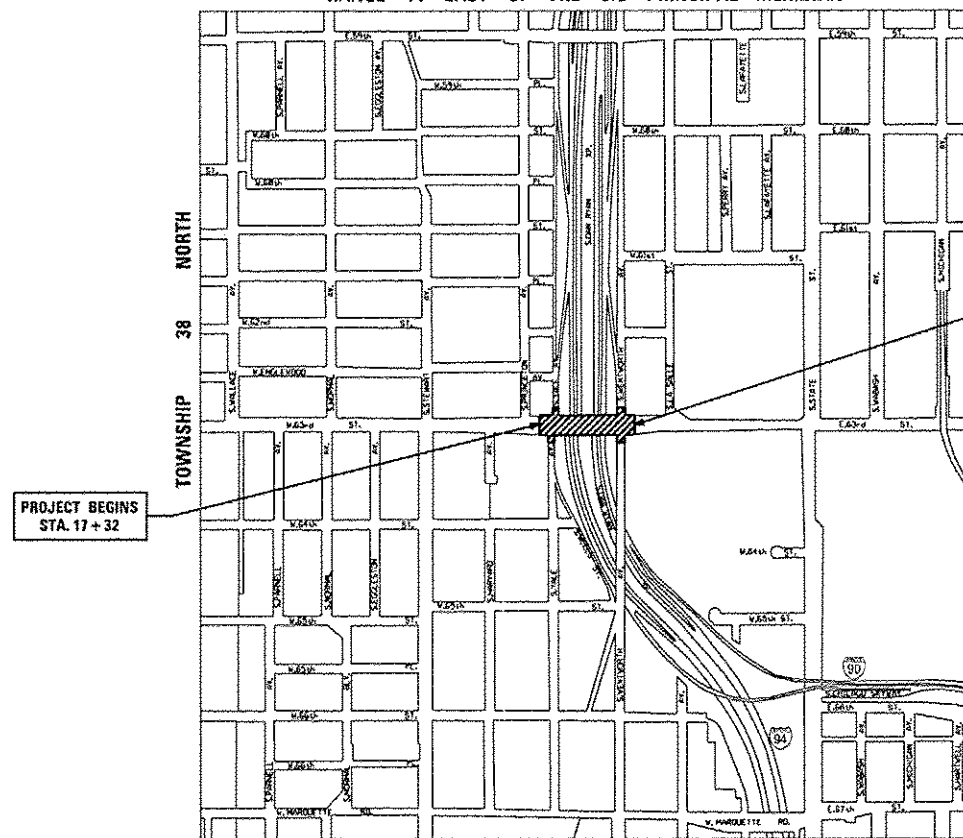


FULL SIZE PLANS HAVE BEEN PREPARED USING STANDARD ENGINEERING SCALES. REDUCED SIZED PLANS WILL NOT CONFORM TO STANDARD SCALES. IN MAKING MEASUREMENTS ON REDUCED PLANS, THE ABOVE SCALES MAY BE USED.

C.U.A.N.
CHICAGO UTILITY ALERT NETWORK
1-312-744-7000
J.U.L.I.E.
JOINT UTILITY LOCATION INFORMATION FOR EXCAVATION
1-800-892-0123
OR 811

PROJECT ENGINEER: CRAIG BAUER 847-705-4265
PROJECT MANAGER: LONG TRAN 847-705-4232
CONTRACT NO. 60J15

RANGE 14 EAST OF THE 3rd PRINCIPAL MERIDIAN



PROJECT ENDS STA. 24+53

63RD STREET OVER FAI 90/94

STRUCTURE NO. 016-1149
REMOVE EXISTING 5 SPAN PPC DECK BEAM SUPERSTRUCTURE. REPAIR OR REPLACE PORTIONS OF THE SUBSTRUCTURE. REPLACE SUPERSTRUCTURE WITH A CONTINUOUS COMPOSITE STEEL BEAM SUPERSTRUCTURE.

BLOOM TOWNSHIP
GROSS LENGTH = 721 FT. = 0.14 MILE
NET LENGTH = 721 FT. = 0.14 MILE



8501 W. Higgins Road, Suite 280
Chicago, Illinois 60631
(773) 399-0112