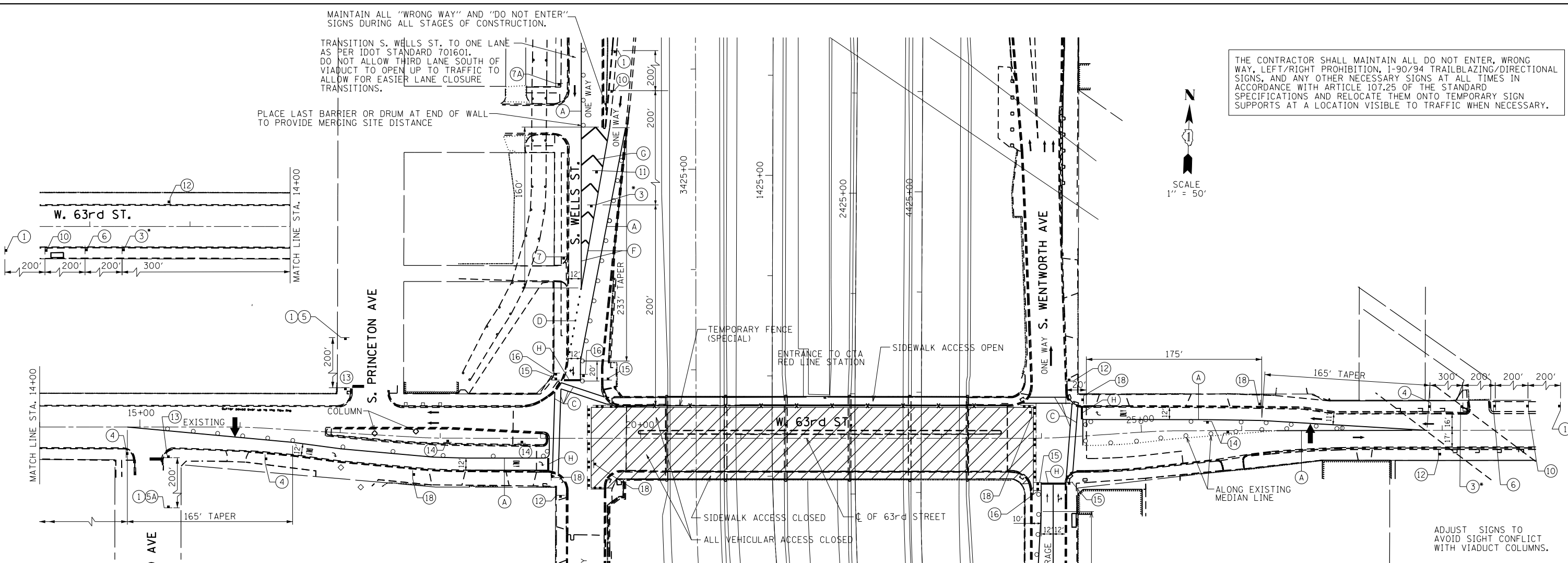
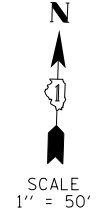


MAINTAIN ALL "WRONG WAY" AND "DO NOT ENTER" SIGNS DURING ALL STAGES OF CONSTRUCTION.

TRANSITION S. WELLS ST. TO ONE LANE AS PER IDOT STANDARD 701601. DO NOT ALLOW THIRD LANE SOUTH OF VIADUCT TO OPEN UP TO TRAFFIC TO ALLOW FOR EASIER LANE CLOSURE TRANSITIONS.

PLACE LAST BARRIER OR DRUM AT END OF WALL TO PROVIDE MERGING SITE DISTANCE

THE CONTRACTOR SHALL MAINTAIN ALL DO NOT ENTER, WRONG WAY, LEFT/RIGHT PROHIBITION, I-90/94 TRAILBLAZING/DIRECTIONAL SIGNS, AND ANY OTHER NECESSARY SIGNS AT ALL TIMES IN ACCORDANCE WITH ARTICLE 107.25 OF THE STANDARD SPECIFICATIONS AND RELOCATE THEM ONTO TEMPORARY SIGN SUPPORTS AT A LOCATION VISIBLE TO TRAFFIC WHEN NECESSARY.



ADJUST SIGNS TO AVOID SIGHT CONFLICT WITH VIADUCT COLUMNS.

STAGE I:

- 63RD STREET:
1. INSTALL ALL TRAFFIC CONTROL, PAVEMENT MARKING, TAPERS, DRUMS, BARRICADES, SIGNING AND REMOVE CONFLICTING PAVEMENT MARKING. INSTALL TEMPORARY FENCE (SPECIAL). PLACE TEMPORARY TRAFFIC SIGNALS TO STAGE I CONFIGURATION.
- REMOVE AND RECONSTRUCT SOUTHERN PORTION OF BRIDGE, ABUTMENTS, PIERS, APPROACH PANELS, SIDEWALKS AND RECONSTRUCT PAVEMENTS. CONSTRUCT PORTIONS OF PERMANENT TRAFFIC SIGNALS AND LIGHTING. RECONSTRUCT 63RD STREET/WENTWORTH AVE. INTERSECTION AND THE EASTERN PORTION OF THE 63RD STREET/YALE AVE. INTERSECTION. COORDINATE SHIFTING OF ELECTRICAL CONDUITS.
- TAPE TEMPORARY PAVEMENT MARKINGS SHALL BE USED ON EXISTING/NEWLY CONSTRUCTED SURFACES. TEMPORARY PAINT SHALL BE USED ON TEMPORARY PAVEMENT OR PAVEMENT TO BE REMOVED.
- TEMPORARY PAVEMENT MARKING (PAINT) SHALL BE REQUIRED ON ALL TEMPORARY PAVEMENT SURFACES OVER THE WINTER MONTHS. PAINT USED OVER THE WINTER MONTHS IN THE TRANSITION AREAS ON EXISTING SURFACES SHALL BE REMOVED BY GRINDING WHEN THE FINAL PAVEMENT MARKINGS ARE INSTALLED. ON EXPRESSWAYS, EPOXY MARKINGS SHALL BE REQUIRED ON ALL TEMPORARY PAVEMENT SURFACES OVER THE WINTER MONTHS. EPOXY USED OVER THE WINTER IN TRANSITION AREAS AT THE LIMITS OF CONSTRUCTION ON EXISTING SURFACES SHALL BE REMOVED BY GRINDING WHEN FINAL PAVEMENT MARKINGS ARE INSTALLED.

LEGEND:

- STAGE I WORK AREA
- TEMPORARY FENCE (SPECIAL)
- EXISTING PAVEMENT MARKINGS
- PROPOSED PAVEMENT MARKINGS
- 4" YELLOW LINE
- 4" DOUBLE YELLOW LINE
- 6" WHITE LINE
- 6" WHITE DOTTED LINE (2' DASH 6' SKIP)
- 4" WHITE LINE
- 8" WHITE LINE
- 12" WHITE DIAGONAL LINE
- 24" WHITE LINE
- ARROW BOARD
- DRUMS OR TYPE II BARRICADES WITH MONO-DIRECTIONAL STEADY BURN LIGHTS IN MULTI-LANE OR ONE WAY SECTIONS AND BI-DIRECTIONAL STEADY BURN LIGHTS IN TWO LANE TWO WAY SECTIONS, SPACED AT 50' C-C IN TANGENT SECTIONS AND 20' C-C IN TAPER SECTIONS AND CORNER RADII PER THE HIGHWAY STANDARDS.
- TRAFFIC DIRECTION
- TYPE III BARRICADE

W20-1103(O)-48	W1-3L(O)-48	W21-1(O)-48	W1-3R(O)-48	M6-4(O)-2115	R2-I-3648	R1-2-48	
W3-2(O)-48	W6-3-48	W20-5R(O)-48	W20-5L(O)-48	W4-1(R)-48	G20-1103(O)-3660	R1-1	R6-2R(O)-48
R5-1	R3-2-24	W1-6L-4824	R3-5R-30	W1-6R-4824			

• - "WORKERS" SIGN TO BE DISPLAYED ONLY WHEN WORKERS ARE PRESENT

H:\projects\2010\1022\CAD\Site\dmr\0016015-shr-MOT_63rd-Stage1.dgn 8/17/11 PM 5/25/2014



USER NAME = 0766	DESIGNED - JSO	REVISED -
	DRAWN - HJM	REVISED -
PLOT SCALE = 100.0000' / 1"	CHECKED - TNS	REVISED -
PLOT DATE = 5/5/2014	DATE - 03-15-2013	REVISED -

**STATE OF ILLINOIS
DEPARTMENT OF TRANSPORTATION**

**63rd STREET BRIDGE REPLACEMENT - COOK COUNTY
SUGGESTED MAINTENANCE OF TRAFFIC - 63rd STREET - STAGE I**

F.A.I. RTE.	SECTION	COUNTY	TOTAL SHEETS	SHEET NO.
94	1920-B	COOK	142	18
CONTRACT NO. 60J15				

SCALE: 1"=50' SHEET OF SHEETS STA. TO STA.

ILLINOIS FED. AID PROJECT